



**true[®]
FIBER**

**CLICK CLEANER
UNIVERSAL DATASHEET**

**Effective Cleaning
Versatile
Quick and Economical
Compliant
Customer Approved**

Key Features

- Captive dust cap
- Extendable wand for hard to clean bulkhead connectors
- Visible indicator of remaining cleaning tape
- Pen style

Have you cleaned your end face today?
trueCLEAN can improve your optical
performance and even help prevent
equipment damage!

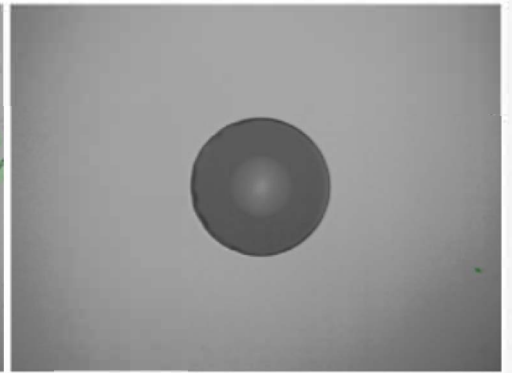
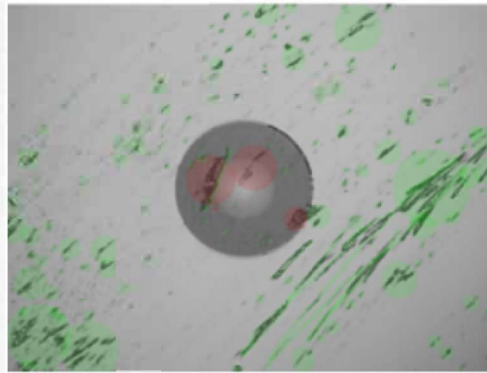
Detailed Specifications

	trueCLEAN LC	trueCLEAN SC
Connector Form Factor	1.25mm LC and MU	2.50mm SC/ST/FC
Connector Type Compatibility	Bulkhead / Coupler / Male Connector	
End Polish Compatibility	UPC or APC	
Tool Construction	Anti-static ABS	
Cleaning Method	Click advance dry tape	
Target Contaminants	Dust / Oil / Moisture	
Extendable Wand	Dual position cleaning probe extends from 2.38" to 3.63"	
Service Life	800 activations	

true[®]
FIBER

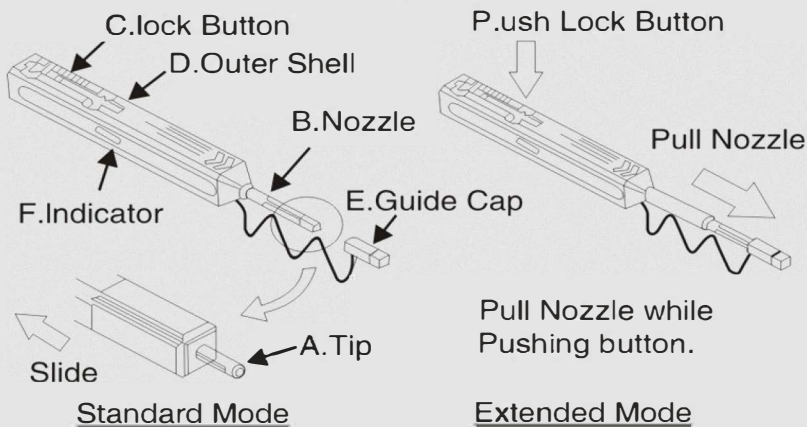
CLICK CLEANER
UNIVERSAL DATASHEET



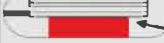
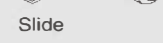


**Before and after end
face pictures,
after just one click!**



The last thing you want in your fiber optic network is signal loss. The primary cause of signal loss is dirty bulkhead connectors and end faces. To make the situation worse, plugging a dirty component into another can damage fiber optic cable and even expensive equipment. Water, oil, and dust are your sworn enemy in the fiber optic world. The way to avoid this is to judiciously clean all connector ferrules and female connectors with the right weapon. Our trueFIBER one click cleaner makes this process simple, efficient, and cost effective. Do yourself a favor, don't risk down time or equipment damage and add this to your tool kit.

General Construction & Use



	View of Indicator	View of the Nozzle end
Full	 Cloth (White)	 Tip(Black) Cloth (white)
Little	 Cloth (White) Red	 Slide Tip(Black) Cloth (white)
Empty	 Red	 Slide Tip(Black) No Cloth (Black)

Identification of remaining cloth

Thank you for choosing the trueFIBER trueCLEAN. This convenient cleaning tool is a high-performance device designed for cleaning the ferrule end faces of MU/LC connectors. Carefully read this instruction manual before using this device. Please keep these instructions.

1. Safety precautions



Though our tool is deemed safe, improper usage or handling can still inflict injury to others.

trueCLEAN LC is designed to clean MU/LC connectors only. trueFIBER is not liable for damage caused in attempt to apply this tool to other applications.

2. Notes on usage

Do not attempt to disassemble tool as this can cause damage to the mechanism.

Do not re-use cleaning cloth as this will eliminate its cleaning ability.

Do not touch the cleaning cloth as this will cause contamination.

Do not pull the cleaning cloth, use only the device body.

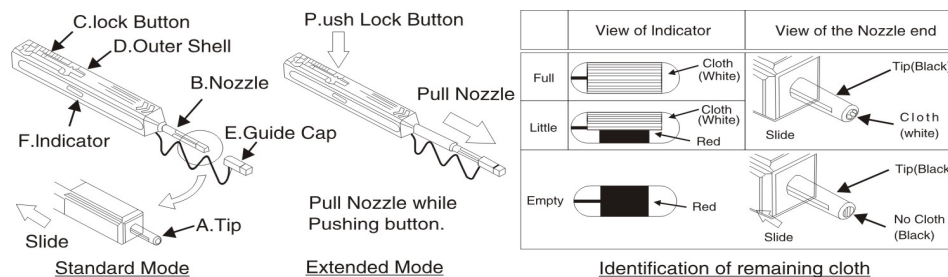
Do not use this tool when the cloth is empty as this will cause damage to the connector.

3. Notes on storage for extended periods

Do not expose tool to direct sunlight, high temperature, or high humidity.

The dust cover on the guide cap should be closed at all times when tool is not in use.

4. Device construction

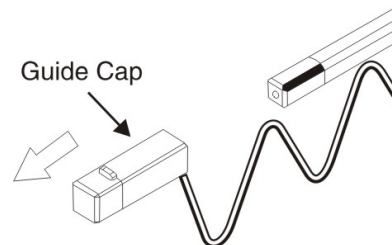


NO	Part Name	Function
A	Tip	Guides cleaning cloth to the optical connector end face
B	Nozzle	Guides the tool tip to the optical connector end face
C	Lock Button	Used to extend and contract tool nozzle
D	Outer Shell	Actuates the tool to clean the connector
E	Guide Cap	Acts as dust cap or cleaning adapter for connector plug
F	Indicator	Provides indication of remaining cleaning cloth

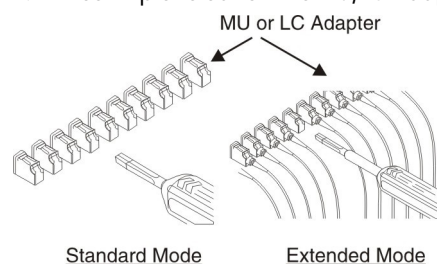
5. Applications

<Bulkhead connectors and female couplers>

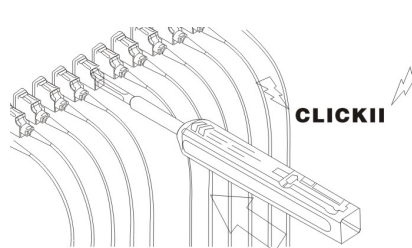
1. Remove Guide Cap from the tool.



2. Insert tip of cleaner into MU/LC Adapter.



3. Push the Outer Shell to start cleaning the MU/LC connector end face. A "click" sound indicates end of cleaning process. Close the dust cover after use.



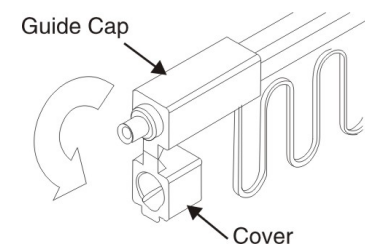
Be careful not to actuate the trueCLEAN on an angle while inserting into the adapter.

Do not use excessive force during insertion as this may cause damage to both the connector and the trueCLEAN.

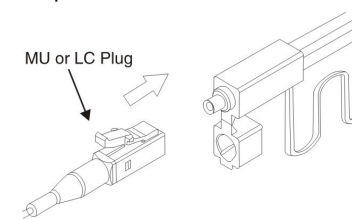
If pushing Outer Shell is inhibited, remove tool from adapter and ensure that there is no debris inhibiting the cleaning process.

<Connector plugs alone>

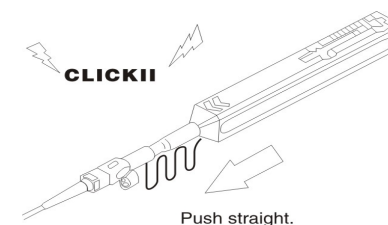
1. Open the dust cover on the Guide Cap.



2. Insert MU/LC connector into the Guide Cap.



3. Push the Outer Shell to start cleaning the MU/LC connector end face. A "click" sound indicates end of cleaning process. Close the dust cover after use.



Be careful not to actuate the trueCLEAN on an angle while inserting into the adapter.

Do not use excessive force during insertion as this may cause damage to both the connector and the trueCLEAN.

If pushing Outer Shell is inhibited, remove trueCLEAN from adapter and ensure that there is no debris inhibiting the cleaning process.