

Pre-Terminated Fiber Distribution Cable

Outdoor • Certified by trueFIBER



Available in:

- OS2 SM
- OM4 MM

Key Features

- 100% factory tested for return loss and insertion loss
- Polyethylene (PE/LLDPE) rated cable jacket
- 100% factory inspected end faces
- Zirconia ceramic ferrules
- UPC end face polishes
- Available in OS2 SM, OM4 MM
- Water blocking aramid yarn strength
- Tight buffer construction
- Ultra high performance Corning® glass core and cladding
- Crush and rodent resistant
- Direct burial rated ultra thin armored fiber optic cable

Physical & Mechanical Characteristics

	OS2 SMF	OM4 MMF
Fiber Count Connector Type	LC to LC UPC Duplex	LC to LC UPC Duplex
End Face Polish		
Polarity	A(Tx) to B(Rx)	A(Tx) to B(Rx)
Fiber Core Cladding Diameter	9/125µm	150/125µm
Cable Jacket Outside	5.0mm	5.0mm
Cable Jacket Color	Black	Black
Connector Color	UPC: blue/white boot	UPC: violet/white boot
Fiber Grade	ITU-T Rec. G.652.D Ultra low loss Corning® SMF-28® OS2	OM4: IEC 60793-2-10 Type A1OM4 / TIA 492AAAD Corning® ClearCurve® ultra-bendable, laser optimized™
Minimum Bend Radius	20D/10D (Dynamic/Static) 10.00mm for core	20D/10D (Dynamic/Static) 7.50mm for core
Maximum Crush Resistance	3000/5000	3000/5000



Pre-Terminated Fiber Distribution Cable

Outdoor • Certified by trueFIBER



- Available in:
- OS2 SM
 - OM4 MM



Cable ID: TRUEFIBER MM PRE-TERMINATED_1

Date / Time: 06/21/2023 01:52:48 PM n = 1.480000 (850 nm)
 Cable Type: ClearCurve Multimode OM4 n = 1.479000 (1300 nm)
 Backscatter Coefficient: -68.0dB (850 nm) Backscatter Coefficient: -76.0dB (1300 nm)

Test Summary: PASS

Modal Bandwidth: 4700MHz-km (850 nm)
 Modal Bandwidth: 500MHz-km (1300 nm)

**Loss (R->M)
PASS**

Test Limit: TIA-568.3-E Multimode (REF)
 Limits Version: 7.8
 Date / Time: 06/21/2023 01:52:48 PM
 Operator: BEN HAMLITSCH
 Main: Versiv
 S/N: 22413214
 Software Version: V6.9 Build 2
 Module: CertiFiber Pro (CFP-QUAD)
 S/N: 23070284
 Calibration Start Date: 03/28/2023
 Remote: Versiv
 S/N: 22320125
 Software Version: V6.9 Build 2
 Module: CertiFiber Pro Remote (CFP-QUAD)
 S/N: 23070279
 Calibration Start Date: 03/28/2023

Propagation Delay (ns)	389	
Length ft	259	PASS
Limit 6562		
Result	850 nm	1300 nm
Loss (dB)	PASS	PASS
Limit (dB)	0.31	0.46
Margin (dB)	1.24	1.12
	0.93	0.66
Reference (dBm)	-23.55	-23.99

Number of Adapters: 2
 Number of Splices: 0
 Connector Type: LC
 Patch Length (ft): 7
 Reference Date: 06/21/2023 01:47:35 PM
 1 Jumper

Compliant Network Standards:

- | | | |
|----------------------------|-----------------------------|-----------------------------|
| 10/100BASE-SX | 1000BASE-LX | 1000BASE-SX |
| 100BASE-FX | 100GBASE-SR10 | 100GBASE-SR4 |
| 10BASE-FL | 10GBASE-LRM | 10GBASE-LX4 |
| 10GBASE-SR | 40GBASE-SR4 | ATM155 |
| ATM155SWL | ATM52 | ATM622 Fiber Optic |
| ATM622SWL Fiber Optic | DDI Fiber Optic | Fibre Channel 100-M5-SN-I |
| Fibre Channel 100-M5E-SN-I | Fibre Channel 1200-M5-SN-I | Fibre Channel 1200-M5E-SN-I |
| Fibre Channel 133 | Fibre Channel 1600-M5E-SN-I | Fibre Channel 1600-M5F-SN-I |
| Fibre Channel 200-M5-SN-I | Fibre Channel 200-M5E-SN-I | Fibre Channel 266 |
| Fibre Channel 266SWL | Fibre Channel 400-M5-SN-I | Fibre Channel 400-M5E-SN-I |
| Fibre Channel 400-M5F-SN-I | Fibre Channel 800-M5E-SN-I | Fibre Channel 800-M5F-SN-I |

LinkWare™ PC Version 11.2

Project: O
 Site: Not Set
 Floor: Not Set
 Rack: Not Set
 Untitled1

Building: Not Set
 Room: Not Set
 Patch: Not Set
 Page 1



Pre-Terminated Fiber Distribution Cable

Outdoor • Certified by trueFIBER



- Available in:
- OS2 SM
 - OM4 MM



Cable ID: TRUEFIBER MM PRE-TERMINATED_2

Date / Time: 06/21/2023 01:52:48 PM n = 1.480000 (850 nm)
 Cable Type: ClearCurve Multimode OM4 n = 1.479000 (1300 nm)
 Backscatter Coefficient: -68.0dB (850 nm) Backscatter Coefficient: -76.0dB (1300 nm)

Test Summary: PASS

Modal Bandwidth: 4700MHz-km (850 nm)
 Modal Bandwidth: 500MHz-km (1300 nm)

Loss (M->R)

PASS

Test Limit: TIA-568.3-E Multimode (REF)
 Limits Version: 7.8
 Date / Time: 06/21/2023 01:52:48 PM
 Operator: BEN HAMLITSCH
 Main: Versiv
 S/N: 22413214
 Software Version: V6.9 Build 2
 Module: CertiFiber Pro (CFP-QUAD)
 S/N: 23070284
 Calibration Start Date: 03/28/2023
 Remote: Versiv
 S/N: 22320125
 Software Version: V6.9 Build 2
 Module: CertiFiber Pro Remote (CFP-QUAD)
 S/N: 23070279
 Calibration Start Date: 03/28/2023

Propagation Delay (ns)	389	
Length ft	259	PASS
Limit 6562		
Result	850 nm	1300 nm
Loss (dB)	PASS	PASS
Limit (dB)	0.43	0.44
Margin (dB)	1.24	1.12
	0.81	0.68
Reference (dBm)	-23.52	-23.85

Number of Adapters: 2
 Number of Splices: 0
 Connector Type: LC
 Patch Length (ft): 7
 Reference Date: 06/21/2023 01:47:35 PM
 1 Jumper

Compliant Network Standards:

- | | | |
|----------------------------|-----------------------------|-----------------------------|
| 10/100BASE-SX | 1000BASE-LX | 1000BASE-SX |
| 100BASE-FX | 100GBASE-SR10 | 100GBASE-SR4 |
| 10BASE-FL | 10GBASE-LRM | 10GBASE-LX4 |
| 10GBASE-SR | 40GBASE-SR4 | ATM155 |
| ATM155SWL | ATM52 | ATM622 Fiber Optic |
| ATM622SWL Fiber Optic | DDI Fiber Optic | Fibre Channel 100-M5-SN-I |
| Fibre Channel 100-M5E-SN-I | Fibre Channel 1200-M5-SN-I | Fibre Channel 1200-M5E-SN-I |
| Fibre Channel 133 | Fibre Channel 1600-M5E-SN-I | Fibre Channel 1600-M5F-SN-I |
| Fibre Channel 200-M5-SN-I | Fibre Channel 200-M5E-SN-I | Fibre Channel 266 |
| Fibre Channel 266SWL | Fibre Channel 400-M5-SN-I | Fibre Channel 400-M5E-SN-I |
| Fibre Channel 400-M5F-SN-I | Fibre Channel 800-M5E-SN-I | Fibre Channel 800-M5F-SN-I |

Pre-Terminated Fiber Distribution Cable

Outdoor • Certified by trueFIBER



Cable ID: TRUEFIBER SM PRE-TERM SCOPE
Date / Time: 06/21/2023 11:51:58 AM

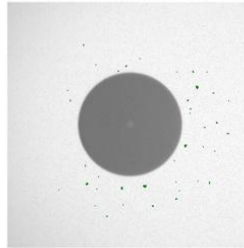
Test Summary: PASS

Endface Image End2

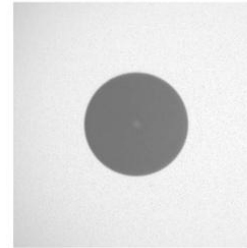
PASS

End Type: 1x1 1 Fibers
Test Limit: IEC 61300-3-35 ED.2 SM RL>=45dB
Limits Version: 7.8
Date / Time: 06/21/2023 11:51:58 AM
Operator: BEN HAMLITSCH
Versiv
S/N: 22413214
Software Version: V6.9 Build 2
Probe: FI-3000
S/N: 19090081
Software Version: v2.1.1

Defects



Raw Image



LinkWare™ PC Version 11.2

Pre-Terminated Fiber Distribution Cable

Outdoor • Certified by trueFIBER



Cable ID: TRUEFIBER MM PRE-TERM SCOPE
Date / Time: 06/21/2023 01:39:23 PM

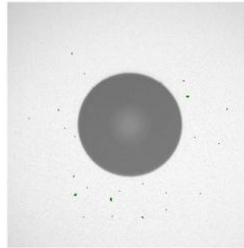
Test Summary: PASS

Endface Image End2

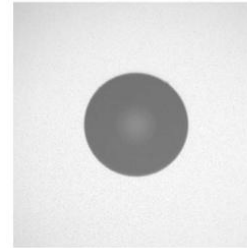
PASS

End Type: 1x1 1 Fibers
Test Limit: IEC 61300-3-35 ED.2 MM
Limits Version: 7.8
Date / Time: 06/21/2023 01:39:23 PM
Operator: BEN HAMLITSCH
Versiv
S/N: 22413214
Software Version: V6.9 Build 2
Probe: FI-3000
S/N: 19090081
Software Version: v2.1.1

Defects



Raw Image



LinkWare™ PC Version 11.2