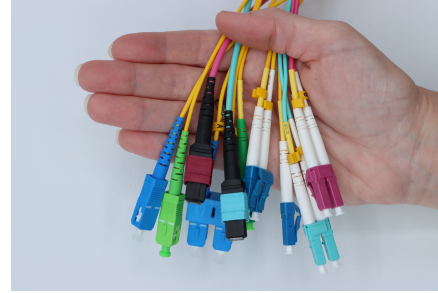


Fiber Optic Patch Cord Universal Spec Sheet

- Extreme Performance
- Bend Insensitive
- High Quality Ceramic Ferrules
- For Use Indoors
- Certified by trueFIBER



Available in:

- OS2 SM
- OM3 MM
- OM4 MM

Key Features

- 100% factory tested for return loss and insertion loss
- 100% factory inspected end faces
- Zirconia ceramic ferrules
- Multiple connector styles such as LC to LC, LC to SC, and Sc to SC
- UPC and APC end face polishes available
- Available in OS2 SM, OM4 MMF, and OM3 MMF
- Laser optimized MMF OM4 and OM3 for edge emitting lasers and VCSELs; fully backward compatible with low cost LED transmitters
- Multiple lengths and pack sizes available
- Tight buffer construction
- Ultra high performance Corning® fiberglass core and cladding
- All connectors have standard boots for strain relief

Make Indoor Ethernet equipment patch connections at light speed! Fully compliant with ANSI/TIA, IEC, and ITU-T standards, trueFIBER pre-connectorized optical fiber patch cords come in multiple fiber types, connectors, and end polishes to suit any patching need. Further, fiber optic patch cords are available in multiple lengths up to 30m (98 feet) and multi-pack quantities. Our patch cords are ideal for 1 gigabit to 400 gigabit applications depending on equipment and distance. Each patch cord is individually packaged to protect against contamination of the connector ferrule and end face. Optical performance test results are printed on the package label.



Physical & Mechanical Characteristics

	OS2 SMF	OM3/OM4 MMF
Fiber Count Connector Type End Face Polish	Simplex (1 fiber) LC to LC APC LC to LC UPC LC to SC APC LC to SC UPC SC to SC APC	Duplex (2 fiber) LC to LC UPC LC to SC UPC
		LC to LC UPC Duplex only
Polarity	A(Tx) to B(Rx) for Duplex	A(Tx) to B(Rx)
Connector Ferrule	Zirconia ceramic LC > 1.25mm SC > 2.50mm	Zirconia ceramic LC > 1.25mm
Fiber Core Cladding Diameter	9/125µm	50/125µm
Cable Jacket Outside Diameter (OD)	2.0mm	2.0mm
Cable Jacket Material	PVC Riser Rated Non Conductive (OFNR)	PVC Riser Rated Non Conductive (OFNR)
Cable Jacket Color	Yellow	OM3L Aqua OM4: Aqua and Erika Violet
Connector Color	APC: Lime green UPC: Blue/white boot	(UPC only) Blue/white boot
Fiber Grade	ITU-T Rec. G.652.D Ultra low loss Corning® SMF-28® OS2	OM3: IEC 60793-2-10 Type A1 OM3 / TIA 492AAAC-B Corning® ClearCurve® ultra-bendable, laser optimized™ OM4: IEC 60793-2-10 Type AIOM4 / TIA 492AAAD Corning® ClearCurve® ultra-bendable, laser optimized™
Minimum Bend Radius	20D/10D (Dynamic/Static) 10.00mm for core	20D/10D (Dynamic/Static) 7.50mm for core
Minimum Pull Tension	50 ft-lbs	50 ft-lbs



Environmental Characteristics

Operating Temperature	-40~75°C -40~167°F
Storage Temperature	-40~85°C -40~185°F

Optical Performance Characteristics

	OS2	OM3	OM4
Wavelength	1310 1550nm	850 1300nm	850 1300nm
Attenuation @Wavelength (dB/km)	0.35 0.21 dB/km	3.0 1.0 dB/km	3.0 1.0 dB/km
Insertion Loss	≤0.3dB	≤0.3dB	≤0.3dB
Return Loss	APC-APC: ≥ 60dB UPC-UPC: ≥ 50dB	≥ 35dB	≥ 35dB

Maximum data transmission speed and/or distance is dependent upon Ethernet protocol in use and optical equipment.

Industry & Regulator Compliances

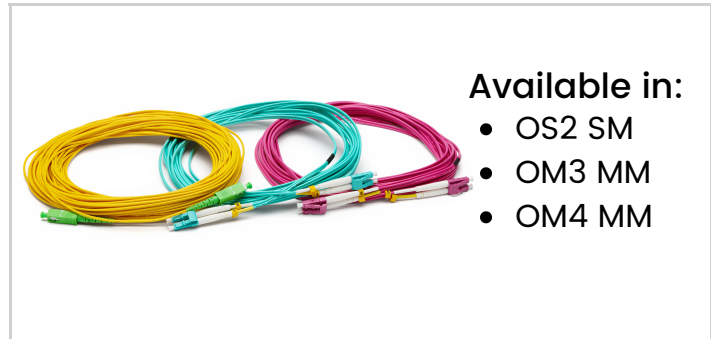
UL	RoHS
ANSI/T	IA 568.3-D
ITU-T Rec. G.652.D	ANSI/TIA 492AAAC-B
ANSI/TIA 492AAAD	IEC 61754
IEC 60793-2-10	IEC 61300-3-35

-  **EMI/RFI Immune**
-  **Indoor Application**
-  **100% End Face Inspected**
-  **100% Performance Inspected**
-  **FTTH**



Fiber Optic Patch Cord Universal Spec Sheet

Certified by trueFIBER



Available in:

- OS2 SM
- OM3 MM
- OM4 MM



Cable ID: 010B
Date / Time: 09/13/2021 03:01:54
PM Cable Type: OS2 Singlemode

n = 1.467000 (1310 nm)
n = 1.468000 (1550 nm)

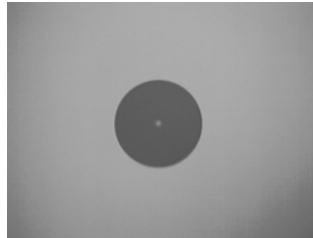
Test Summary: PASS

Backscatter Coefficient: -79.5dB (1310 nm)
Backscatter Coefficient: -82.0dB (1550 nm)

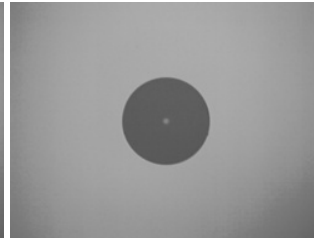
Endface Image End1

PASS
Test Limit: IEC 61300-3-35 ED.2 SM
RL>=45dB
Limits Version: 7.6
Date / Time: 09/13/2021 02:06:42
PM Versiv
S/N: 18028056
Software Version: V6.6 Build 2
Probe: FI-1000

End1



End2



Endface Image End2

PASS
Test Limit: IEC 61300-3-35 ED.2 SM
RL>=45dB
Limits Version: 7.6
Date / Time: 09/13/2021 02:08:09
PM Versiv
S/N: 18028056
Software Version: V6.6 Build 2
Probe: FI-1000

Loss (R->M)

PASS
Test Limit: TIA-568.3-D-1 Singlemode ISP (REF)
Limits Version: 7.6
Date / Time: 09/13/2021 03:01:54 PM
Main: Versiv
S/N: 18028056
Software Version: V6.6 Build 2
Module: CertiFiber Pro (CFP-QUAD)
S/N: 2475004
Calibration Date: 07/15/2013
Remote: Versiv
S/N: 17510098
Software Version: V6.6 Build 2
Module: CertiFiber Pro Remote (CFP-QUAD)
S/N: 2447618
Calibration Date: 06/27/2013

Propagation Delay (ns)	19	
Length ft	13	PASS
Limit 131234		
Result	1310 nm	1550 nm
Loss (dB)	PASS	PASS
Limit (dB)	0.36	0.07
Margin (dB)	1.00	1.00
	0.64	0.93
Reference (dBm)	-3.20	-3.14

Number of Adapters: 2
Number of Splices: 0
Connector Type: LC
Patch Length1 (ft): 7
Reference Date: 09/13/2021 02:56:04 PM
1 Jumper

Loss (M->R)

PASS
Test Limit:
Limits Version:
Date / Time:

	1310 nm	1550 nm
Result	PASS	PASS
Loss (dB)	0.15	0.10
Limit (dB)	1.00	1.00
Margin (dB)	0.85	0.90
Reference (dBm)	-2.72	-3.13

Compliant Network Standards:

100GBASE-LX	100GBASE-ER4	100GBASE-LR4
10GBASE-E	10GBASE-L	10GBASE-LRM
10GBASE-LX4	40GBASE-ER4	40GBASE-FR
40GBASE-LR4	Fibre Channel 100-SM-LC-L	Fibre Channel 1200-SM-LC-L
Fibre Channel 1600-SM-LC-L	Fibre Channel 200-SM-LC-L	Fibre Channel 400-SM-LC-L
Fibre Channel 400-SM-LC-M	Fibre Channel 800-SM-LC-I	Fibre Channel 800-SM-LC-L

Fiber Optic Patch Cord Universal Spec Sheet

Certified by trueFIBER



Available in:

- OS2 SM
- OM4 MM



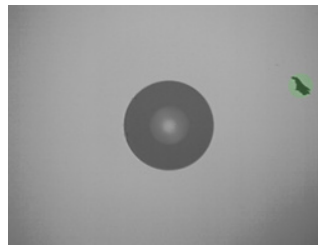
Cable ID: 002A
 Date / Time: 09/13/2021 02:41:25 PM n = 1.482000 (850 nm)
 Cable Type: OM4 Multimode 50n = 1.479000 (1300 nm)
 Backscatter Coefficient: -68.0dB (850 nm) Backscatter Coefficient: -75.8dB (1300 nm)

Test Summary: PASS
 Modal Bandwidth: 4700MHz-km (850 nm) Modal Bandwidth: 500MHz-km (1300 nm)

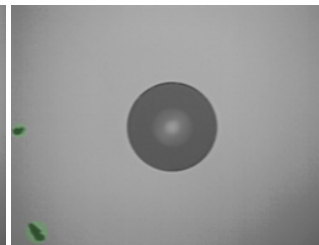
Endface Image End1

PASS
 Test Limit: IEC 61300-3-35 ED.2 MM
 Limits Version: 7.6
 Date / Time: 09/13/2021 02:10:57
 PM Versiv
 S/N: 18028056
 Software Version: V6.6 Build 2
 Probe: FI-1000

End1



End2



Endface Image End2

PASS
 Test Limit: IEC 61300-3-35 ED.2 MM
 Limits Version: 7.6
 Date / Time: 09/13/2021 02:11:53
 PM Versiv
 S/N: 18028056
 Software Version: V6.6 Build 2
 Probe: FI-1000

Loss (R->M)

PASS
 Test Limit: TIA-568.3-D-1 Multimode (REF)
 Limits Version: 7.6
 Date / Time: 09/13/2021 02:41:25 PM
 Main: Versiv
 S/N: 18028056
 Software Version: V6.6 Build 2
 Module: CertiFiber Pro (CFP-QUAD)
 S/N: 2475004
 Calibration Date: 07/15/2013
 Remote: Versiv
 S/N: 17510098
 Software Version: V6.6 Build 2
 Module: CertiFiber Pro Remote (CFP-QUAD)
 S/N: 2447618
 Calibration Date: 06/27/2013

Propagation Delay (ns)	16	
Length ft	11	PASS
Limit 6562		
	850 nm	1300 nm
Result	PASS	PASS
Loss (dB)	0.17	0.19
Limit (dB)	1.01	1.00
Margin (dB)	0.84	0.81
Reference (dBm)	-24.39	-24.03

Number of Adapters: 2
 Number of Splices: 0
 Connector Type: LC
 Patch Length1 (ft): 7
 Reference Date: 09/13/2021 02:35:15 PM
 1 Jumper

Loss (M->R)

PASS
 Test Limit:
 Limits Version:
 Date / Time:

	850 nm	1300 nm
Result	PASS	PASS
Loss (dB)	0.20	0.18
Limit (dB)	1.01	1.00
Margin (dB)	0.81	0.82
Reference (dBm)	-24.75	-24.65

Compliant Network Standards:

- | | | |
|-----------------------------|----------------------------|-----------------------------|
| 10/100BASE-SX | 100BASE-LX | 1000BASE-SX |
| 100BASE-FX | 100GBASE-SR10 | 100GBASE-SR4 |
| 10BASE-FL | LRM | 10GBASE-LX4 |
| 10GBASE-SR | 40GBASE-SR4 | ATM155 |
| ATM155SWL | ATM52 | ATM622 Fiber Optic |
| ATM622SWL Fiber Optic | DDDI Fiber Optic | Fibre Channel 100-M5-SN-I |
| Fibre Channel 100-M5E-SN-I | Fibre Channel 1200-M5-SN-I | Fibre Channel 1200-M5E-SN-I |
| Fibre Channel 133 | Fibre Channel 1600-M5-SN-S | Fibre Channel 1600-M5E-SN-I |
| Fibre Channel 1600-M5F-SN-I | Fibre Channel 200-M5-SN-I | Fibre Channel 200-M5E-SN-I |
| Fibre Channel 266 | Fibre Channel 266SWL | Fibre Channel 400-M5-SN-I |
| Fibre Channel 400-M5E-SN-I | Fibre Channel 400-M5F-SN-I | Fibre Channel 800-M5-SN-S |
| Fibre Channel 800-M5E-SN-I | Fibre Channel 800-M5F-SN-I | |