

## Bulk Fiber Distribution Cable

Indoor • OFNP • Certified by trueFIBER



Available in:

- OS2 SM
- OM4 MM

### Key Features

- trueFIBER 2 strand indoor cable
- 1000 ft. easy pull fiber in a box
- OFNP (Plenum) rated cable jackets will not promote the spread of flame or toxic fumes
- MM and SM fiber cable is encased with aramid yarn strength member
- Available in OS2 SM, OM4 MM
- Laser optimized SMF OS2 and MMF OM4 for optimal bend radius
- Tight buffer construction
- Ultra high performance Corning® glass core and cladding
- Heavy-duty distribution jacket offers protection during installation and long term system application

### Physical & Mechanical Characteristics

	OS2 SMF	OM4 MMF
Indoor SM and MM Fiber	2 strand blue/orange	2 strand blue/orange
Strength Member	Aramid yarn	Aramid yarn
Fiber Core   Cladding Diameter	9/125µm	50/125µm
Cable Jacket Outside Diameter (OD)	4.0mm	4.0mm
Cable Jacket Material	PVC Plenum Rated Non Conductive (OFNP)	PVC Plenum Rated Non Conductive (OFNP)
Cable Jacket Color	Yellow	Violet
Tensile Strength	300/150	300/150
Fiber Grade	IITU-T Rec. G.652.D Ultra low loss Corning® SMF-28® OS2	OM4: IEC 60793-2-10 Type A1OM4 / TIA 492AAAD Corning® ClearCurve® ultra-bendable, laser optimized™
Minimum Bend Radius	20D/10D (Dynamic/Static) 10.00mm for core	20D/10D (Dynamic/Static) 7.50mm for core
Minimum Pull Tension	50 ft-lbs	50 ft-lbs
Allowable Crush Resistance	1000/200	1000/200



## Bulk Fiber Distribution Cable

Indoor/Outdoor • LSZH • Certified by trueFIBER



Available in:

- OS2 SM
- OM4 MM

### Key Features

- trueFIBER 2 Strand Indoor/Outdoor cable
- 1000 ft easy pull fiber in a box
- Low Smoke Zero Halogen (LSZH) rated cable jackets will not promote the spread of flame or toxic fumes
- MM and SM fiber cable is encased with water blocking aramid yarn strength member
- Available in OS2 SM, OM4 MMF
- Laser optimized SMF OS2 and MMF OM4 for optimal bend radius
- Tight buffer construction
- Ultra high performance Corning® glass core and cladding
- Heavy-duty distribution jacket offers protection during installation for outdoor application

### Physical & Mechanical Characteristics

	OS2 SMF	OM4 MMF
Indoor SM and MM Fiber	2 strand blue/orange	2 strand blue/orange
Strength Member	Water blocking aramid yarn	Water blocking aramid yarn
Fiber Core   Cladding Diameter	9/125µm	50/125µm
Cable Jacket Outside Diameter (OD)	4.0mm	4.0mm
Cable Jacket Material	Low Smoke Zero Halogen (LSZH)	Low Smoke Zero Halogen (LSZH)
Cable Jacket Color	Black	Black
Tensile Strength	300/150	300/150
Fiber Grade	ITU-T Rec. G.652.D Ultra low loss Corning® SMF-28® OS2	OM4: IEC 60793-2-10 Type A1OM4 / TIA 492AAAD Corning® ClearCurve® ultra-bendable, laser optimized™
Minimum Bend Radius	20D/10D (Dynamic/Static) 10.00mm for core	20D/10D (Dynamic/Static) 7.50mm for core
Minimum Pull Tension	50 ft-lbs	50 ft-lbs
Allowable Crush Resistance	1000/200	1000/200



## Bulk Fiber Distribution Cable

Indoor • OFNP • Certified by trueFIBER



Available in:

- OS2 SM
- OM4 MM



### Cable ID: BULK DIST SM INDOOR OFNP 1

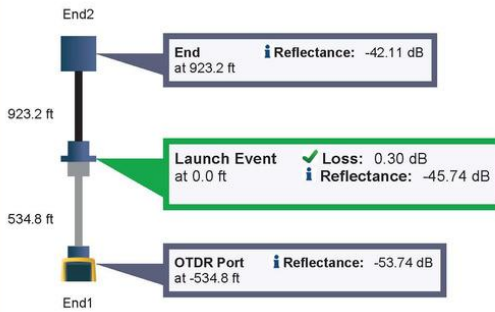
Date / Time: 06/21/2023 06:13:02 PM n = 1.467600 (1310 nm)  
 Cable Type: SMF-28e+ n = 1.468200 (1550 nm)

### Test Summary: PASS

Backscatter Coefficient: -77.0dB (1310 nm)  
 Backscatter Coefficient: -82.0dB (1550 nm)

#### OTDR End1 EventMap

Fiber Length: 923.2 ft  
 Overall Loss: 0.37 dB

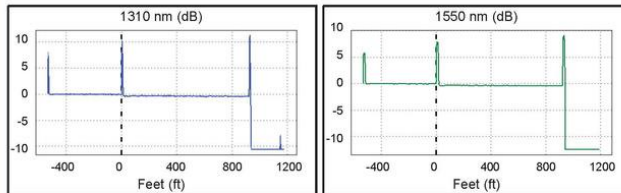


#### OTDR End1 PASS

Test Limit: ANSI/TIA-568.3-E  
 Limits Version: 7.8  
 Date / Time: 06/21/2023 06:13:02 PM  
 Operator: BEN HAMLITSCH  
 Versiv  
 S/N: 22413214  
 Software Version: V6.9 Build 2  
 Module: OptiFiber Pro (OPF-QUAD)  
 S/N: 22330024  
 Calibration Date: 02/07/2023

Launch Only  
 Launch Type: Singlemode  
 Launch Length : 534.8 ft  
 Compensation Date: 06/21/2023 05:58 PM  
 Macro Bend Thresholds  
 1550 nm - 1310 nm Δ : 0.50 dB

Auto OTDR	1310 nm	1550 nm
Range (Auto)	1713 ft	1728 ft
Resolution (Auto)	0.2 ft	0.1 ft
Pulse Width (Auto)	10 ns	30 ns
Averaging Time (Auto)	9 s	10 s
Loss Threshold (Auto)	0.10 dB	0.10 dB
End Threshold (Auto)	0.00 dB	0.00 dB



Measurements	Status	1310 nm		1550 nm	
		Value	Limit	Value	Limit
Overall Length (ft)	PASS	923.2	13123		
Overall Loss (dB)		0.37		0.34	
ORL (dB)		41.44		46.24	
<b>Events</b>					
-----					
923.2 ft End					
Reflectance (dB)		-42.11		-47.16	
Attn Coeff (dB/km)		0.35		0.15	
-----					
0.0 ft Launch Event	PASS				
Loss (dB)		0.27	0.75	0.30	0.75
Reflectance (dB)		-45.74		-50.35	
Attn Coeff (dB/km)		0.28		0.15	

LinkWare™ PC Version 11.2

## Bulk Fiber Distribution Cable

Indoor • OFNP • Certified by trueFIBER



- Available in:
- OS2 SM
  - OM4 MM



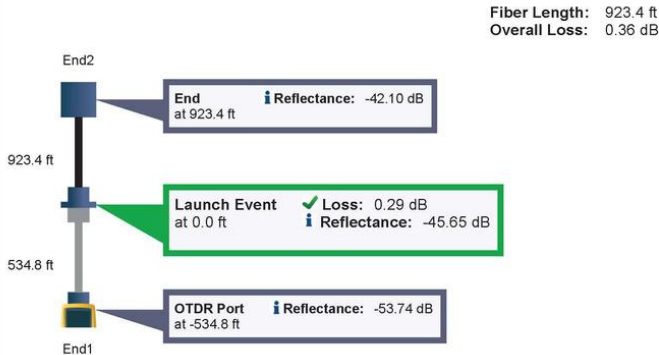
### Cable ID: BULK DIST SM INDOOR OFNP 2

Date / Time: 06/21/2023 06:11:46 PM n = 1.467600 (1310 nm)  
 Cable Type: SMF-28e+ n = 1.468200 (1550 nm)

### Test Summary: PASS

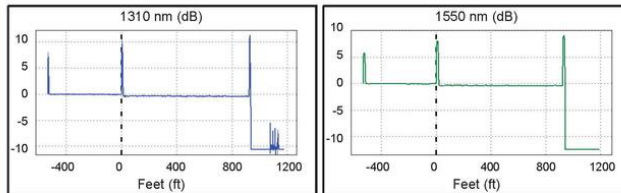
Backscatter Coefficient: -77.0dB (1310 nm)  
 Backscatter Coefficient: -82.0dB (1550 nm)

#### OTDR End1 EventMap



#### OTDR End1 PASS

Test Limit: ANSI/TIA-568.3-E Limits Version: 7.8 Date / Time: 06/21/2023 06:11:46 PM Operator: BEN HAMLITSCH Versiv S/N: 22413214 Software Version: V6.9 Build 2 Module: OptiFiber Pro (OFF-QUAD) S/N: 22330024 Calibration Date: 02/07/2023	Launch Only Launch Type: Singlemode Launch Length : 534.8 ft Compensation Date: 06/21/2023 05:58 PM Macrobend Thresholds 1550 nm - 1310 nm Δ : 0.50 dB	Auto OTDR Range (Auto) 1713 ft 1728 ft Resolution (Auto) 0.2 ft 0.1 ft Pulse Width (Auto) 10 ns 30 ns Averaging Time (Auto) 9 s 10 s Loss Threshold (Auto) 0.10 dB 0.10 dB End Threshold (Auto) 0.00 dB 0.00 dB	1310 nm 1550 nm
---	---	---	--------------------



Measurements	Status	1310 nm		1550 nm	
		Value	Limit	Value	Limit
Overall Length (ft)	PASS	923.4	13123		
Overall Loss (dB)		0.36		0.34	
ORL (dB)		41.41		46.12	
Events					
923.4 ft End					
Reflectance (dB)		-42.10		-47.14	
Attn Coeff (dB/km)		0.34		0.17	
0.0 ft Launch Event	PASS				
Loss (dB)		0.27	0.75	0.29	0.75
Reflectance (dB)		-45.65		-50.04	
Attn Coeff (dB/km)		0.35		0.26	

LinkWare™ PC Version 11.2

## Bulk Fiber Distribution Cable

Indoor/Outdoor • LSZH • Certified by trueFIBER



Available in:

- OS2 SM
- OM4 MM



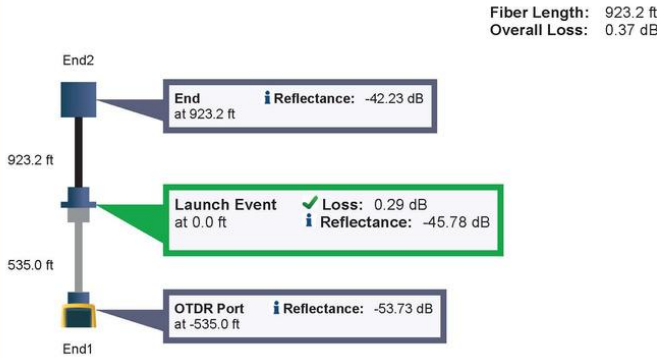
### Cable ID: BULK DIST SM IN/OUT LZSH 1

Date / Time: 06/21/2023 06:05:01 PM n = 1.467600 (1310 nm)  
 Cable Type: SMF-28e+ n = 1.468200 (1550 nm)

### Test Summary: PASS

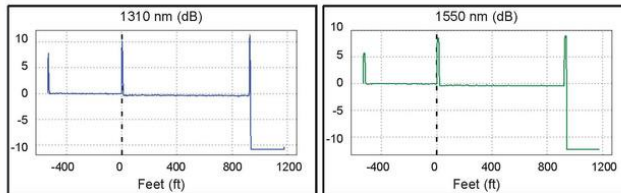
Backscatter Coefficient: -77.0dB (1310 nm)  
 Backscatter Coefficient: -82.0dB (1550 nm)

#### OTDR End1 EventMap



#### OTDR End1 PASS

Test Limit: ANSI/TIA-568.3-E	Launch Only	Auto OTDR	1310 nm	1550 nm
Limits Version: 7.8	Launch Type: Singlemode	Range (Auto)	1713 ft	1714 ft
Date / Time: 06/21/2023 06:05:01 PM	Launch Length : 535.0 ft	Resolution (Auto)	0.4 ft	0.1 ft
Operator: BEN HAMLITSCH	Compensation Date: 06/21/2023 05:58 PM	Pulse Width (Auto)	10 ns	30 ns
Version	Macrobend Thresholds	Averaging Time (Auto)	9 s	10 s
S/N: 22413214	1550 nm - 1310 nm Δ : 0.50 dB	Loss Threshold (Auto)	0.10 dB	0.10 dB
Software Version: V6.9 Build 2		End Threshold (Auto)	0.00 dB	0.00 dB
Module: OptiFiber Pro (OFF-QUAD)				
S/N: 22330024				
Calibration Date: 02/07/2023				



Measurements	Status	1310 nm		1550 nm	
		Value	Limit	Value	Limit
Overall Length (ft)	PASS	923.2	13123		
Overall Loss (dB)		0.37		0.35	
ORL (dB)		41.46		45.64	
Events					
923.2 ft End					
Reflectance (dB)		-42.23		-47.24	
Attn Coeff (dB/km)		0.32		0.20	
0.0 ft Launch Event	PASS				
Loss (dB)		0.28	0.75	0.29	0.75
Reflectance (dB)		-45.78		-48.88	
Attn Coeff (dB/km)		0.30		0.17	

LinkWare™ PC Version 11.2

## Bulk Fiber Distribution Cable

Indoor/Outdoor • LSZH • Certified by trueFIBER



Available in:

- OS2 SM
- OM4 MM



### Cable ID: BULK DIST SM IN/OUT LZSH 2

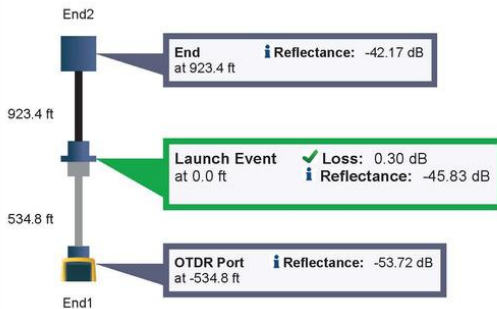
Date / Time: 06/21/2023 06:05:35 PM n = 1.467600 (1310 nm)  
 Cable Type: SMF-28e+ n = 1.468200 (1550 nm)

### Test Summary: PASS

Backscatter Coefficient: -77.0dB (1310 nm)  
 Backscatter Coefficient: -82.0dB (1550 nm)

#### OTDR End1 EventMap

Fiber Length: 923.4 ft  
 Overall Loss: 0.37 dB

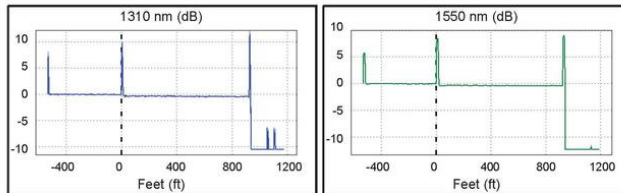


#### OTDR End1 PASS

Test Limit: ANSI/TIA-568.3-E  
 Limits Version: 7.8  
 Date / Time: 06/21/2023 06:05:35 PM  
 Operator: BEN HAMLITSCH  
 Versiv  
 S/N: 22413214  
 Software Version: V6.9 Build 2  
 Module: OptiFiber Pro (OPF-QUAD)  
 S/N: 22330024  
 Calibration Date: 02/07/2023

Launch Only  
 Launch Type: Singlemode  
 Launch Length : 534.8 ft  
 Compensation Date: 06/21/2023 05:58 PM  
 Macrobend Thresholds  
 1550 nm - 1310 nm Δ : 0.50 dB

Auto OTDR  
 Range (Auto) 1310 nm 1712 ft 1550 nm 1728 ft  
 Resolution (Auto) 0.1 ft 0.1 ft  
 Pulse Width (Auto) 10 ns 30 ns  
 Averaging Time (Auto) 9 s 10 s  
 Loss Threshold (Auto) 0.10 dB 0.10 dB  
 End Threshold (Auto) 0.00 dB 0.00 dB



Measurements	Status	1310 nm		1550 nm	
		Value	Limit	Value	Limit
Overall Length (ft)	PASS	923.4	13123		
Overall Loss (dB)		0.37		0.34	
ORL (dB)		41.48		45.72	
<b>Events</b>					
-----					
923.4 ft End					
Reflectance (dB)		-42.17		-47.23	
Attn Coeff (dB/km)		0.35		0.16	
-----					
0.0 ft Launch Event	PASS				
Loss (dB)		0.27	0.75	0.30	0.75
Reflectance (dB)		-45.83		-49.06	
Attn Coeff (dB/km)		0.27		0.16	

LinkWare™ PC Version 11.2

## Bulk Fiber Distribution Cable

Indoor/Outdoor • LSZH • Certified by trueFIBER



Available in:

- OS2 SM
- OM4 MM



### Cable ID: BULK DIST MM IN/OUT LZSH 1

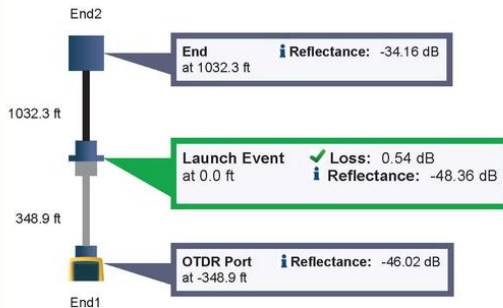
Date / Time: 06/22/2023 04:27:30 PM n = 1.480000 (850 nm)  
 Cable Type: ClearCurve Multimode OM4 n = 1.479000 (1300 nm)  
 Backscatter Coefficient: -68.0dB (850 nm) Backscatter Coefficient: -76.0dB (1300 nm)

### Test Summary: PASS

Modal Bandwidth: 4700MHz-km (850 nm)  
 Modal Bandwidth: 500MHz-km (1300 nm)

### OTDR End1 EventMap

Fiber Length: 1032.3 ft  
 Overall Loss: 1.12 dB

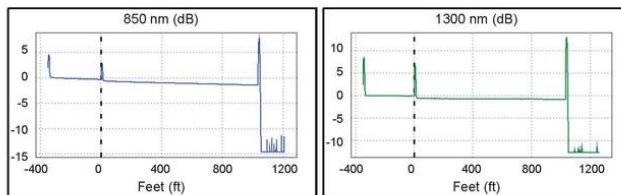


### OTDR End1 PASS

Test Limit: ANSI/TIA-568.3-E  
 Limits Version: 7.8  
 Date / Time: 06/22/2023 04:27:30 PM  
 Operator: BEN HAMLITSCH  
 Versiv  
 S/N: 22413214  
 Software Version: V6.9 Build 2  
 Module: OptiFiber Pro (OFF-QUAD)  
 S/N: 22330024  
 Calibration Date: 02/07/2023

Launch Only  
 Launch Type: Multimode  
 Launch Length : 348.9 ft  
 Compensation Date: 06/22/2023 04:26 PM  
 Macrobend Detection: Disabled

Auto OTDR	850 nm	1300 nm
Range (Auto)	1559 ft	1612 ft
Resolution (Auto)	0.1 ft	0.1 ft
Pulse Width (Auto)	20 ns	20 ns
Averaging Time (Auto)	1 s	8 s
Loss Threshold (Auto)	0.10 dB	0.10 dB
End Threshold (Auto)	0.00 dB	0.00 dB



Measurements	Status	850 nm		1300 nm	
		Value	Limit	Value	Limit
Overall Length (ft)	PASS	1032.3	6562		
Overall Loss (dB)		1.12		0.74	
ORL (dB)		34.32		41.47	
<b>Events</b>					
-----					
1032.3 ft End					
Reflectance (dB)		-36.04		-34.16	
Attn Coeff (dB/km)		2.49		0.62	

LinkWare™ PC Version 11.2

## Bulk Fiber Distribution Cable

Indoor • OFNP • Certified by trueFIBER



Available in:

- OS2 SM
- OM4 MM



### Cable ID: BULK DIST MM INDOOR OFNP 1

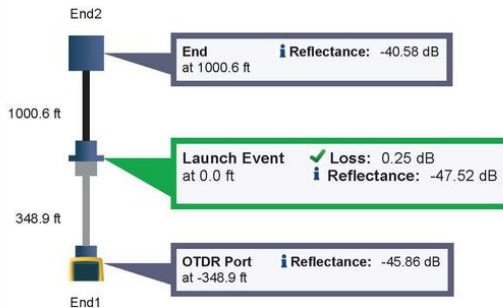
Date / Time: 06/28/2023 10:40:45 AM n = 1.480000 (850 nm)  
 Cable Type: ClearCurve Multimode OM4 n = 1.479000 (1300 nm)  
 Backscatter Coefficient: -68.0dB (850 nm) Backscatter Coefficient: -76.0dB (1300 nm)

### Test Summary: PASS

Modal Bandwidth: 4700MHz-km (850 nm)  
 Modal Bandwidth: 500MHz-km (1300 nm)

### OTDR End1 EventMap

Fiber Length: 1000.6 ft  
 Overall Loss: 0.88 dB

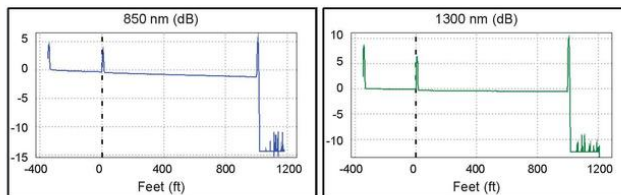


### OTDR End1 PASS

Test Limit: ANSI/TIA-568.3-E  
 Limits Version: 7.8  
 Date / Time: 06/28/2023 10:40:45 AM  
 Operator: BEN HAMLITSCH  
 Versiv  
 S/N: 22413214  
 Software Version: V6.9 Build 2  
 Module: OptiFiber Pro (OFF-QUAD)  
 S/N: 22330024  
 Calibration Date: 02/07/2023

Launch Only  
 Launch Type: Multimode  
 Launch Length : 348.9 ft  
 Compensation Date: 06/28/2023 10:20 AM  
 Macrobend Detection: Disabled

Auto OTDR	850 nm	1300 nm
Range (Auto)	1532 ft	1559 ft
Resolution (Auto)	0.1 ft	0.1 ft
Pulse Width (Auto)	20 ns	20 ns
Averaging Time (Auto)	1 s	7 s
Loss Threshold (Auto)	0.10 dB	0.10 dB
End Threshold (Auto)	0.00 dB	0.00 dB



Measurements	Status	850 nm		1300 nm	
		Value	Limit	Value	Limit
Overall Length (ft)	PASS	1000.6	6562		
Overall Loss (dB)		0.88		0.48	
ORL (dB)		33.99		41.28	
<b>Events</b>					
1000.6 ft End					
Reflectance (dB)		-41.14		-40.58	
Attn Coeff (dB/km)		2.45		0.75	

LinkWare™ PC Version 11.2