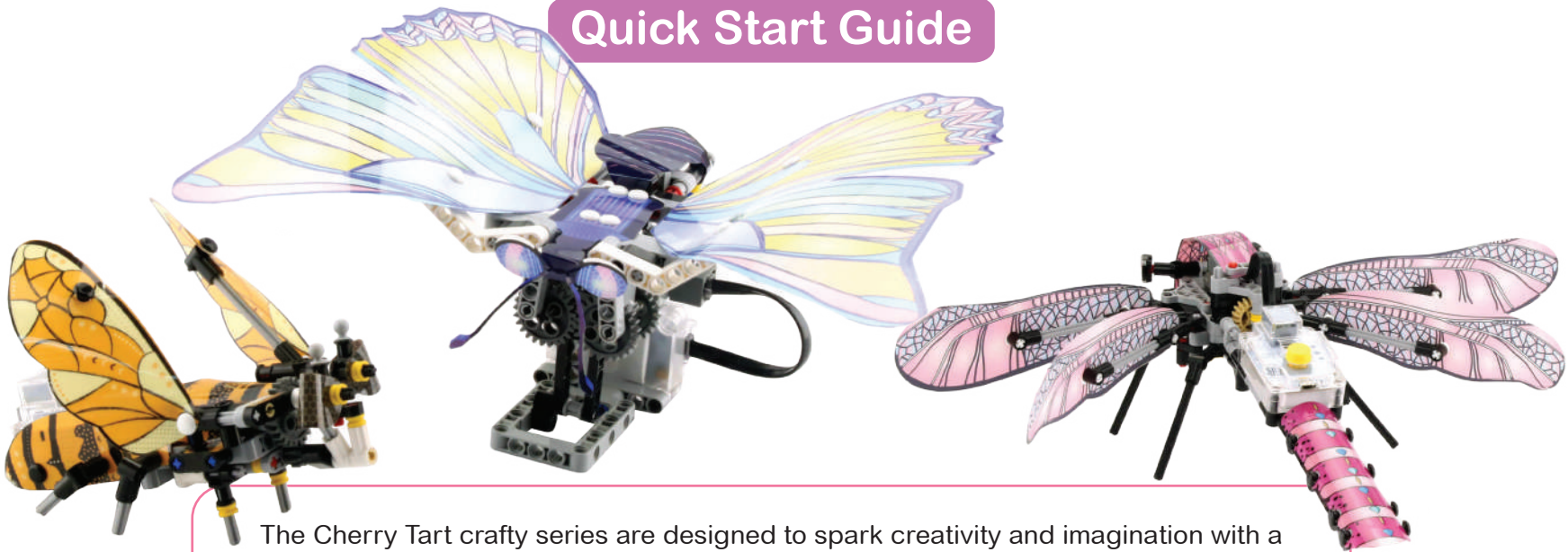


Crafty Robot Kit

Quick Start Guide

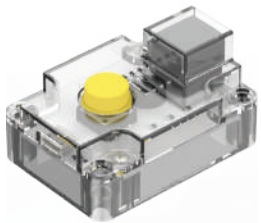


The Cherry Tart crafty series are designed to spark creativity and imagination with a hands-on STEM robot kit for future innovators. A combination of colorful LEGO-compatible building blocks with customizable skins creates a joyful and creative challenge for kids & adults. This is the first sound-activated bio-inspired building block kit for kids & adults to reconnect with their creative side! This kit provides nature's beauty, enjoyment of design and building, and art. Everyone will be surprised to see how the combination of interactivity and craft gives life to these bio-inspired models.

In the box

Your Crafty Robot Kit includes one Cherry Core (a sound-activated LEGO-compatible electronic board) with a built-in Li-Po rechargeable battery, one compact motor, one motor cable, one USB charging cable, and more than 325 LEGO-compatible building blocks.

1x



Cherry Core

325+



LEGO-compatible Building Blocks

1x



120 RPM Motor

1x



USB Charging Cable

1x



Motor Cable

3x



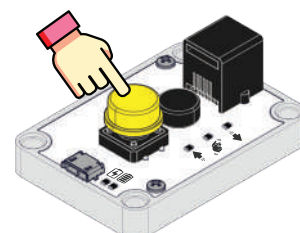
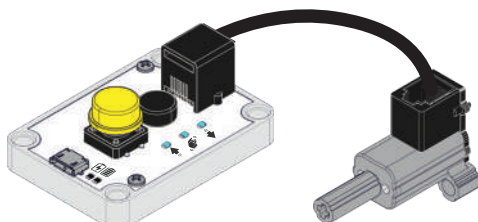
Skins

Crafty Cherry Tart Assembly

1. Wiring Diagram

Cherry Core has a tactile push-button for on/off control and changing the operation modes. Three blue lights indicate operation modes (Forward motion, Sound-activated, and Backward motion).

- ➡ Forward motion
- 👏 Sound-activated motion
- ⬅ Backward motion



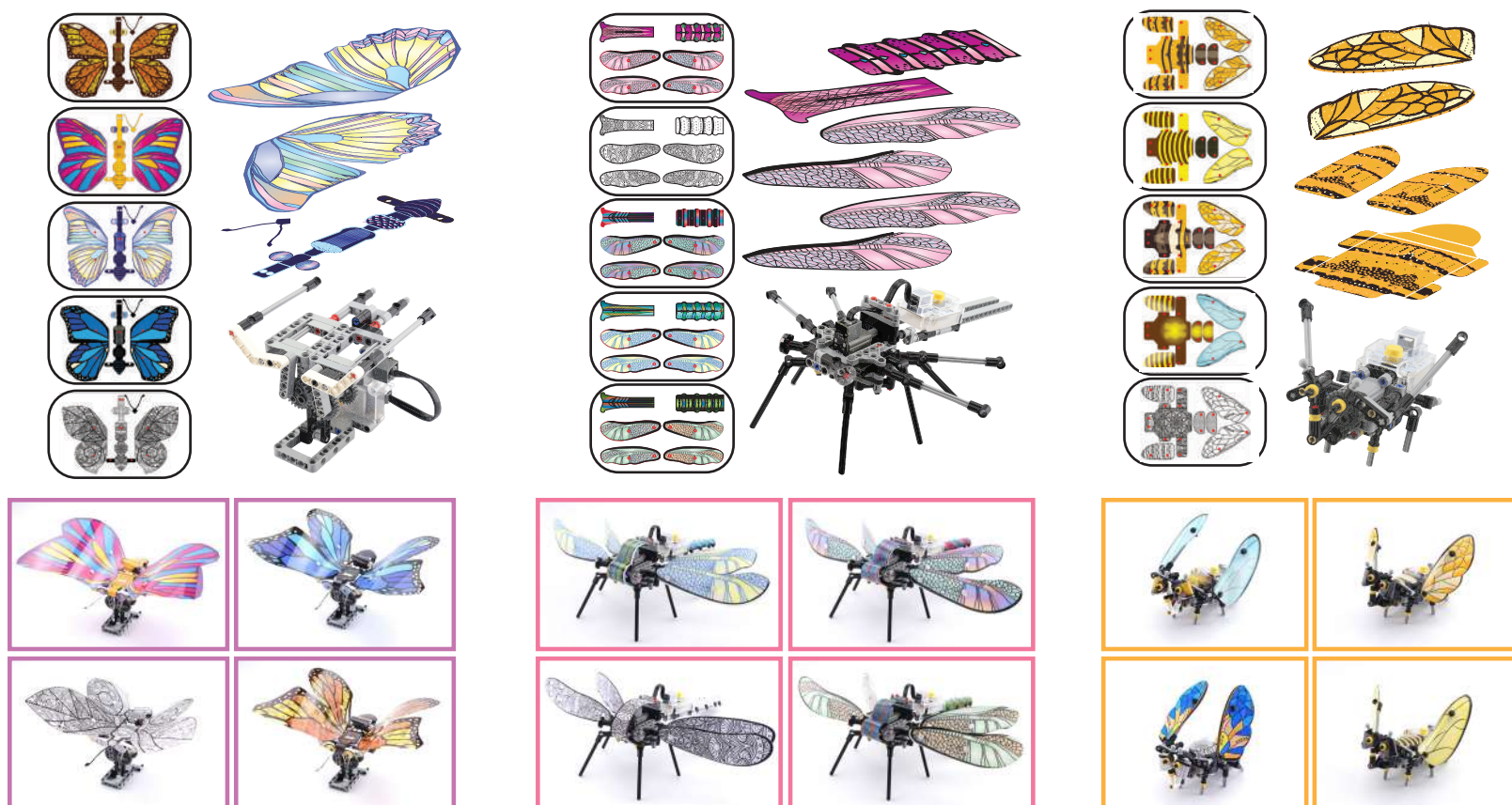
- To turn the Cherry Core ON, press the push-button once.
- Tap the push-button for changing the operation modes.
- To turn the Cherry Core OFF, Press and hold the push-button for 2 seconds.

2. Mechanical Assembly

Follow the assembly diagrams to transform parts into the Crafty Cherry Tart robots. For detailed assembly instructions, visit our website at www.tartrobotics.com.

Fold & Snap Together!

The Cherry Tart crafty series comes with different foldable and customizable skins that allow personal expression. You can cover your model with printed skins or paint and decorate your own skin.



Battery Instruction

1. Battery Safety

Please carefully read the following safety instructions and charge and use the battery correctly.

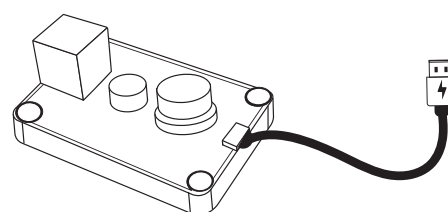
- The flame symbol on the battery pack means that the battery must be kept away from flammable materials, direct heat, fire, hot places, and direct sunlight. There is a high risk of leakage and exploding.
- The wheeled bin symbol on the battery pack means that the battery must not be disposed of with other household waste. Refer to the battery recycling section for further details.
- The recycle symbol on the battery pack means recyclable under certain circumstances. Refer to the battery recycling section for further details.
- Do not disassemble, modify, puncture, cut, tear, compress, and deform the battery pack. There is a high risk of leakage and exploding.
- Do not short circuit the battery, may cause burns.

2. Battery Charging

- Rechargeable batteries are only to be charged under adult supervision.
- To charge, insert the Li-Po battery into your battery charger and connect the battery charger to the power, as shown in the picture. Your battery charger will automatically begin charging the battery.

- The green light indicates that the battery is fully charged.

Note: Cherry Core automatically turns off when it's on charging and when the battery is low.



3. Battery Recycling

- The wheeled bin symbol on the battery pack means that the battery must not be disposed of with other household waste.
- The recycle symbol on the battery pack means recyclable under certain circumstances. However, to minimize the impact on the environment and human health from soil and water contamination, they should be collected separately for proper recovery and recycling techniques. Consult your local city council for battery recycling options.

4. Battery Removal

- The battery inside the pack is factory assembled and non-replaceable.
- Do not open the screws on the battery pack. Opening the battery pack will make the product inoperative and remove the manufacturing warranty.
- Do not modify and short-circuit battery wire.

Use & Maintenance

The Crafty Cherry robot kit contains small parts not suitable for children under the age of three.

- Recharge your robot if you see a reduction in performance or if your robot is not properly responding to commands.
- Do not operate your robot in rain or other wet conditions; this can potentially damage your robot.
- If your robot's mechanisms or motors jam, immediately stop operations and deactivate the robot. Identify and correct the jam before reactivating the robot.
- Do not operate the robot if the electronics or mechanisms are damaged.
- Do not clean your robot with any liquids.
- Do not use water, alcohol, household cleaners, ammonia, window cleaner, aerosol sprays, solvents, or abrasives. Use only a clean, dry, lint-free cloth to gently remove debris.

Operation

Do not submerge, burn, puncture, crush, microwave, or expose your robot to water, extreme heat, or fire. Do not operate your robot in very dusty or sandy environments – debris may damage the mechanisms. Do not allow fingers, hair, or clothing to become entangled in your robot's moving parts. Do not operate your robot near anyone's face or eyes. If your robot's mechanisms or motors jam, immediately stop operations and deactivate the robot. Identify and correct the jam before reactivating the robot. Do not operate the robot if the electronics or mechanisms are damaged.

- LEGO® is a trademark of the LEGO group, which does not sponsor, authorize or endorse Tart Robotics products.
- Apple and the Apple logo are trademarks of Apple Inc. registered in the U.S. and other countries.
- App Store is a service mark of Apple Inc. Android and Google Play are trademarks of Google Inc. Bluetooth® wordmark and logos are owned by Bluetooth SIG, Inc. Copyright © 2021 Tart Robotics, Inc. All Rights Reserved.
- Tart Robotics™, Tart Robotics logo are the trademarks of Tart Robotics, Inc. Tart Robotics, Inc. reserves the right to amend or improve the product design, application, software and/or user guide without any restriction or obligation to notify users.

Remove all packaging before use. Pictures may vary from the content. Keep this guide for future reference. This quick start guide should be used for reference only and may be updated. For finding the most updated version, visit our website at www.tartrobotics.com.



Tart Robotics, Inc.
Suite#200, 5700 Yonge Street, Toronto, ON, M2M 4K2, Canada
customer@tartrobotics.com
Designed in Toronto, Canada. Made in China

