

DocuPrint
CM505 da

FUJI XEROX 

DocuPrint CM505 da Colour Multifunction Laser Printer

Maximises Power, Efficiency
and Space at the Office



The Ultimate Performer for the Productive Office

The new **DocuPrint CM505 da** is a powerful multifunction device that maximises efficiency for workgroups. With advanced features and high-end multifunction capabilities, it enables workgroups to consolidate existing print fleets and achieve the highest levels of productivity. In fact, the **DocuPrint CM505 da** is so powerful and versatile, one single unit effectively performs the job of several lower-end multifunction devices, faster and more reliably. Print, copy, scan, email and fax (optional) with absolute ease with the **DocuPrint CM505 da** – designed especially for medium to large workgroups.



All-round Performance that Astounds

All-in-one functionality gives you the power to print, copy, scan, email and fax (optional) in one compact unit. And with the Fuji Xerox multi-tasking network controller, all these tasks can even be performed simultaneously.

A high-speed 45 ppm print and copy rate, along with a first-page-out time of less than 10 seconds for colour prints and 9 seconds for black-and-white prints mean you never waste a second in the office.

Superb 1,200 x 1,200 dpi maximum resolution puts brilliant high-intensity print capabilities at your command. Create dazzling prints with amazing detail, in-house and in seconds!

Does Much More, More Easily

Intuitive simplicity at a touch. Easily access machine functions with the large 7" WVGA touch screen with feature icons for easy navigation.



Simple Copy Screen and Simplex Fax* screen are provided in addition to the standard copy and fax* screen. Displaying only base setting allows simpler operation. The character on these screens are 5mm or larger and easier to see.

* Option

Send scans with ease. LDAP integrates scanning with your network address book. Simply scan then send!

Direct USB file retrieval*. Simply plug your USB memory device to the USB port to scan or print files quickly and directly.

*Optional DocuPrint CM500 Series Upgrade Kit is required.

Store print settings and save time. Define and set the paper sizes, finishings, covers, sizes and more for your favourite document sets with the intelligent print driver.

CentreWare Internet Services is an innovative web-based tool for administrators to remotely monitor and manage tasks. It works with any common web browser and there's no need for software installation. With it, you can configure devices, upload address books, monitor usage and consumables, and even enable driverless printing for remote users via any connected computer without the need for a print driver.

Convert hard copies to text-searchable PDFs in just one step*. Just scan the document to create a text-searchable PDF for much easier archiving, organising and information retrieval.

*Black-and-white documents only. Optional DocuPrint CM500 Series Upgrade Kit is required.



Saves Earth and Expenses

DocuPrint CM505 da conforms to the international ENERGY STAR program which is intended to consider global environmental issue such as global warming and implement energy efficient office automation equipment.

Low power consumption – In sleep mode, the **DocuPrint CM505 da** only consumes 16W, and just 155W in standby mode. Even for the most intensive operations, power usage is maximised at a low 1.76Kw (at 220V).

EA-ECO Toner is a new chemical toner created by combining sharp melt polyster, provides a rich glaze without using oil. This toner fuses to paper at approximately 20°C lower than conventional toners, significantly contributing to reduce power consumption.

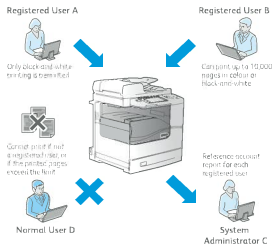
Cost and paper savings – Reduce costs and paper usage by printing multiple pages per sheet with the N-up feature, which works for Microsoft Word documents, PDFs, web pages and more. Further savings are easily achieved by setting default duplex printing.

Unique Printing Flexibility “Run Black” feature
Run black features enables machine to continue printing in black when your color toners runs out.

Electronic fax lets you perform paperless fax functions to eliminate wastage and enhance productivity. Incoming faxes can be routed to designated email addresses, folders or network-connected PCs for on-demand retrieval and distribution.

Accounting Management

Control and manage colour usage with FX Auditor. With it, you can define user usage limits for colour printing. This makes it easier to track, analyse and manage print expenses.



Xerox Standard Accounting provides reports for greater cost control to track and limit the number of copy, print, network scanning, email and fax jobs for each user.

Secures Data at Every Level

- **Secure Print** keeps documents private by holding print jobs in the queue until the user enters the password.
- **Password protected PDFs** – Requires a password to open and view a sensitive scan.
- **Data Security Kit*** – Provides features such as Data Encryption, Data Overwrite and Data Delete.
- **IEEE 802.1X protocol** ensures devices connected to the network are properly authenticated.
- **IPv6 support** opens up additional IP addressing opportunities across the internet and inside enterprise firewalls. Provides additional network security, better network routing and configuration, and improved support for high volume printing and larger print jobs.



*Optional DataPrint CM500 Series Upgrade Kit is required.

- **Network Authentication** – Restricts access to device features and management settings by validating user names and passwords.
- **IPsec data encryption.** You can also ensure the security of your data when transmitting it over a network by encrypting it with the IPsec feature.
- **SNMPv3** (Simple Network Management Protocol) systems provide secure access to devices over the network.

Expansion Options for Added Value

Configure your DocuPrint CM505 da to best meet workgroup requirements with the wide range of add-on possibilities. The basic 700-sheet unit expands up to a 2,350-sheet holding capacity for ultimate versatility.

Create even more possibilities with the optional Finisher AB1 unit. It automatically sorts, stacks and staples documents, ensuring maximum efficiency and productivity.



- Standard 550-sheet paper tray
- Total 700-sheet capacity



- One tray option 550 sheets
- Total 1,250 sheet capacity



- Two tray option 1,100 sheets
- Total 1,800-sheet capacity

Specifications of DocuPrint CM505 ds

Print Function

Print Speed	Simplex: A5uppm (Mono/Colour) Duplex: 36uppm (Mono/Colour)
Print Resolution	1 200 x 1 200dpi, 600 x 600dpi (Standard)
Maximum Duty Cycle	11 000 pages / month
First page out Time	Up to 9 sec. for Mono and 9.5 sec. for Colour
Warm-up Time	42 sec. or less (when powered on) 26 sec. or less (from low power mode)
Memory	2GB
Processor	Panzer PC 1GHz
FDL	PCL6, PCL5, TIFF, FX PDF, XPS, Adobe Postscript 3, HPCL, HP GL2
Connectivity	Ethernet 1000 BASE-T/1000 BASE-TX/1000 BASE-T, USB 2.0
Supported Operating System	Microsoft Windows 2000, Microsoft Windows XP, Microsoft Windows Vista, Microsoft Windows 7, Windows Server 2003 & 2008, Mac OS 9, 2, 2, & 10.4, 11 (except 10.4.7), & 10.5.10.0
Paper Size	Paper Tray 1: A4, A5, RS, JIS, Legal, Folio, Letter, Executive, Custom Paper (Width: 98x216mm, Length: 190x356mm) Paper Tray 5 (MSJ): Custom Paper (Width: 76x216mm, Length: 127x356mm)
Paper Type	60pt, 70pt, 80pt, Recycled, Recycled, Heavy Weight (100-140gsm), Extra Heavy (164-214gsm), Transparency, Purchased, Labels, Glass (105 gsm), HV Glass (106-163 gsm), X-HV Glass (164-216 gsm), Envelope, Letterhead, Pre-primed
Paper Weight	Paper Tray 1-5: 60-216gsm
Media Input Capacity (Standard)	700 sheets - Standard Tray (550 sheets) + Bypass Tray (150 sheets)
Media Input Capacity (Maximum)	Max (2,350 sheets), Standard Tray (2100 sheets) + 1 Tray Module (550 sheets) + 2 Tray Module (1,100 sheets)
DADF (Auto/Multi Sheet Feeder)	110 sheets
Media Output Capacity	500 sheets
Dimensions (W x D x H)	560 x 526 x 629 mm
Weight	56 kg
Power Supply	AC 220 - 240 V ±10% / AC 110 V ±10%, 10/15 A for both 50/60 Hz ±3%
Power Consumption	Max: up to 1.76kW (220V) Standby mode: up to 0.59W (220V) Sleep mode: up to 1.6W (220V)
Noise Levels (dBA)	up to 7.4dB (during operation), up to 5.3dB (during stand-by)
Warranty	One year on-site warranty

Copy Function

Copy Speed (A4)	Simplex: 4.5uppm (Mono/Colour) Duplex: 3.6uppm (Mono/Colour)
Copy Resolution	600 x 600dpi
First Copy Out Time	Pages: 7.8 sec. (Mono), 9.8 sec. (Colour) DADF: 9.8 sec. (Mono), 11.8 sec. (Colour)
Reduction / Enlargement	25 % - 400 %
Continuous Copy	999 sheets
Copy Features	2 sided book copy, booklet creation, duplex Multiple up, Annotation, Paste, Image repeat/exit

Descriptions in this manual, product specifications and/or appearances are subject to change without prior notice due to improvements. Please note that the product colour is given differently from the actual colour as a result of principles of process or printing ink. Colour is a registered trademark of Advanced Graphics, Macintosh, Mac OS and EnterTalk are trademarks of Apple Computer, Inc. Other company names or product names are trademarks or trademarks of such company.

For Your Safe Use

Before using the product, read the instruction manual carefully for proper use.
Use the product with an appropriate electrical power source and voltage displayed.
Be sure to establish a ground.
In the case of a failure or short circuit, an electric shock may result.

For more information or detailed product specifications, call or visit us at

Fuji Xerox Asia Pacific Pte.Ltd. 037826 21
(Fuji Xerox Printers)
Wisma Fuji Xerox,
1st Floor, No. 10, Jalan Bersatu 13/4,
46200 Petaling Jaya,
Selangor, Malaysia
Tel: 03-7882 2888 Fax: 03-7882 2767

East Malaysia Office:
199A-201, Lot 3049 & 3050,
Eastmoore Centre,
2 1/2 Mile, Jalan Reck,
93200 Kuching,
Sarawak, Malaysia
Tel: 082-428 650 Fax: 082-418 733

Service Hotline : 1800 88 1063
www.fujixeroxprinters.com.my

XEROX, and the sphere of connectivity design are trademarks or registered trademarks of Xerox Corporation in the U.S. and/or other countries. Other trademarks are the property of their respective owners.

Scan Function

Type	Colour Scanner
Scan Speed	Mono: 45ppm - Colour: 45ppm up to 600 x 600dpi
Scanning Resolution	up to 600 x 600dpi
Scan Features	Scan to PC (SMTP/FTP), Scan to email (with base kit), Scan to URL, Email, Scan to folder, Scan to USB*
Scan Format	TIFF, JPEG, DocuWorks, PDF, XPS

*Optional DocuPrint CM505 Series Interface Kit is required.

Fax Function (Optional, require Fax kit)

Document Size	Max: 215 x 355 mm
Fax Resolution	up to 600 x 600dpi
Transmission Speed/Time	Maximum: G3 - 3 sec.
Fax Memory	Share with system memory (Max 2GB)
Fax Features	Direct Fax, Internet Fax, PC Fax send, Incoming Fax report by mail box, Junk fax burner, Fax forward to email/fax

Consumables

Black Toner (up to 16,000 pages)	CT201680
Cyan Toner (up to 12,000 pages)	CT201681
Magenta Toner (up to 12,000 pages)	CT201682
Yellow Toner (up to 12,000 pages)	CT201683
Drum (50,000 each for Black, Cyan, Magenta and Yellow)	CT350899 (K) CT350900 (C) CT350901 (M) CT350902 (Y)
Waste Toner Box (up to 25,000 pages)	CWA40809
Fuser Unit (up to 700,000 pages), 220V	CWA40810
Feed Roller Unit (up to 150,000 pages)	CWA40812
Staple Cartridge for A4 (300 sheets of 5,000 staples for total of 15,000 staples)	CWA40950

Declared yield is in accordance with ISO/IEC 19798. Yield may vary depending on image, area, coverage and print media (job length, media size, media type and orientation).
Printer is shipped with one set of standard toner cartridges.

Accessories

1 Tray Module (550 sheets)	E3100032
2 Tray Module (1,100 sheets)	E3100033
Finisher A01* (Stack: 1,000 sheets (uninstalled), Staple: max 50 sheets)	E3100031
DocuPrint CM500 Series Upgrade Kit (HDU Extension, Data Security Kit, USB Media Print, Searchable PDF, Scan to USB, USB Cable)	E3100055
Fax Kit	E3100043
IC Card Gate Installation Kit	E3100052
IC Card Reader*	E3100100
IC Card Reader-MC Cable (55 cm*) (extended cable length)	E9100054
Table Adapter for IC Card Gate	E3100053

NOTE: *Optional DocuPrint CM500 Series Upgrade Kit is required.



Reproduction Prohibitions: Usage is left at the discretion of the following copyrighted bylaws. Do not use without express permission and obtain permission from the copyright holder and local laws' countries. Licensed usage statistics and user IDs, Certificate of Origin, generated by use. The reproduction of images for copyright, reproduction of images, scanning, copying, scanning, music, diagnostic data, or other data is prohibited except when they are intended for personal, professional, or other uses within the scope of the above. This product is equipped with an anti-piracy feature. The feature is not intended to prevent illegal copying activities, but to ensure the safety of the copyright of the registered user.

FUJI XEROX