



NYHO Labs LLC  
 Address: 37 Huntington Street  
 Cortland, NY 13045  
 Contact Name: Geoffrey Brown  
 Contact Phone:  
 License #: OCM-AUCP-22-000003  
 Sample ID: 4481



**Phyto-Farma Labs**  
 a Smithers company

**CERTIFICATE OF ANALYSIS**  
 Permit #: OCM-CPL-00004

Certificate: 4481.1

## La Bomba Live Resin Vape 1g pen

Lot #: VA00051-OVL

Sample ID: 4481

Regulatory Category: Adult Use

Received: 04/17/2024

Sampling Location: 37 Huntington St  
 Cortland, NY 13045

Lot Size: 2500

Sample Type: Concentrate

Amount Received: 10 g

Sample Collected: 04/16/2024 11:28 AM

Published: 04/23/2024



## COMPLIANCE FOR RETAIL

Cannabinoid Profile <b>Not Tested</b>	Average Cannabinoid Profile <b>Pass</b>	Terpenes Total <b>Pass</b>	<b>Pass</b> Sample Status	
Pesticides <b>Pass</b>	Mycotoxins <b>Pass</b>	Residual Solvents <b>Pass</b>		<b>90.0%</b> Total THC
Trace Metals <b>Pass</b>	Microbial Contaminants <b>Pass</b>	Moisture Analysis <b>Not Tested</b>		<b>0.451%</b> Total CBD
Water Activity <b>Not Tested</b>	Filth & Foreign <b>Not Tested</b>			<b>97.0 %</b> Total Cannabinoids

Report Notes: N/A

Alicia Caruso-Thomas

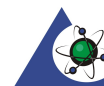
04/23/2024

*Alicia Caruso-Thomas*

Laboratory Director

Phyto-Farma Labs

49 John Hicks Drive  
 Warwick, NY 10990  
 (845) 988-0937



Accreditation #: 121747

This is a Phyto-Farma certification that relates only to the material tested and shall not be reproduced, unless in its entirety, without written approval from Phyto-Farma. Test results are confidential, unless explicitly waived. All Pass/Fail results please reference state regulations released on 01FEB2024. Pass/Fail results do not use uncertainty, but is available upon request. The product represented has been tested by Phyto-Farma Labs using validated scientific methodologies. Note action levels are state determined thresholds for human safety and consumption. Acronym Definitions: ND - Not Detected, LOQ - Limit of Quantification, ULOQ - Upper Limit of Quantification; are terms used to describe the reliably measured smallest and largest concentrations. <LOQ> denotes the result is above detection limit, but below quantifiable limit. CFU - Colony Forming Units. Cannabis Product Sampling SOP# SOP.T.20.010.



NYHO Labs LLC  
 Address: 37 Huntington Street  
 Cortland, NY 13045  
 Contact Name: Geoffrey Brown  
 Contact Phone:  
 License #: OCM-AUCP-22-000003  
 Sample ID: 4481



**Phyto-Farma Labs**  
 a Smithers company

**CERTIFICATE OF ANALYSIS**

Permit #: OCM-CPL-00004

Certificate: 4481.1

**Average Cannabinoid Profile**

**Pass**

**Sample Analysis**

Date: 04/22/2024 03:04 PM

SOP: NY.SOPT.40.260

Analyzed By: HPLC

Sample Weight: N/A

Analyst: Stephanie Knapp

Analyte	LOQ (%)	Average % (w/w)	mg/serving	Homogeneity <sup>†</sup>
Total Tetrahydrocannabinol (THC)	-	90.0	900	PASS
Tetrahydrocannabinolic acid (THCA)	0.500	0.711	7.11	
Δ8-THC	0.500	<LOQ	<LOQ	
Δ9-THC	0.500	89.4	894	
Δ10-THC-RS	0.500	<LOQ	<LOQ	
Δ10-THC-RR	0.500	<LOQ	<LOQ	
Total Cannabidiol (CBD)	-	0.451	4.51	
Cannabidiolic acid (CBDA)	0.500	0.235	2.35	
Cannabidiol (CBD)	0.500	0.245	2.45	
Total Active Tetrahydrocannabivarin (THCV)	-	1.14	11.4	
Tetrahydrocannabivarinic acid (THCVA)*	0.500	0.0836	0.836	
Tetrahydrocannabivarin (THCV)	0.500	1.06	10.6	
Total Active Cannabigerol (CBG)	-	1.83	18.3	
Cannabigerolic acid (CBGA)	0.500	<LOQ	<LOQ	
Cannabigerol (CBG)	0.500	1.83	18.3	
Cannabidivarin (CBDV)	0.500	<LOQ	<LOQ	
Cannabinol (CBN)	0.500	3.36	33.6	
Cannabichromene (CBC)	0.500	0.190	1.90	

Cannabinoid Totals	Actual % (w/w)	mg/serving	Homogeneity <sup>†</sup>
Total Cannabinoids	97.0	970	

\* Analyte is not included in ISO 17025 scope of accreditation

† Concentration of individual samples must be ±25% of the mean concentration

Total Active CBD = CBD + (0.877 x CBDA); Total Active CBG = CBG + (0.878 x CBGA);

Total Active THC = (Δ9THC + Δ8THC + Δ10THC-RS + Δ10THC-RR) + (0.877 x THCA);

Total Active THCV = THCV + (0.867 x THCVA);

Serving Weight: 1g

Alicia Caruso-Thomas

04/23/2024

*Alicia Caruso-Thomas*

Laboratory Director

Phyto-Farma Labs

49 John Hicks Drive

Warwick, NY 10990

(845) 988-0937



Accreditation #: 121747

This is a Phyto-Farma certification that relates only to the material tested and shall not be reproduced, unless in its entirety, without written approval from Phyto-Farma. Test results are confidential, unless explicitly waived. All Pass/Fail results please reference state regulations released on 01FEB2024. Pass/Fail results do not use uncertainty, but is available upon request. The product represented has been tested by Phyto-Farma Labs using validated scientific methodologies. Note action levels are state determined thresholds for human safety and consumption. Acronym Definitions: ND - Not Detected, LOQ - Limit of Quantification, ULOQ - Upper Limit of Quantification; are terms used to describe the reliably measured smallest and largest concentrations. <LOQ\* denotes the result is above detection limit, but below quantifiable limit. CFU - Colony Forming Units. Cannabis Product Sampling SOP# SOP.T.20.010.



NYHO Labs LLC  
 Address: 37 Huntington Street  
 Cortland, NY 13045  
 Contact Name: Geoffrey Brown  
 Contact Phone:  
 License #: OCM-AUCP-22-000003  
 Sample ID: 4481



**Phyto-Farma Labs**  
 a Smithers company

**CERTIFICATE OF ANALYSIS**

Permit #: OCM-CPL-00004

Certificate: 4481.1

**Terpene Total**

**Pass (0.3300%)**

**Sample Analysis**

Date: 04/23/2024 02:27 PM

SOP: NY.SOPT.40.090

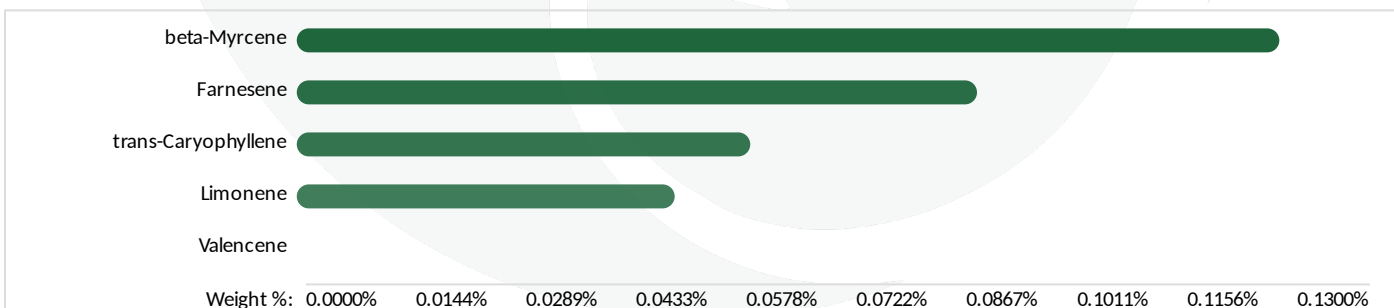
Sample Weight: 0.45207 g

Analyzed By: GC-MS

Analyst: Destiny Ribadeneyra

Analyte	LOQ (%)	Results (%)	Analyte	LOQ (%)	Results (%)
3-Carene	0.02000	<LOQ	gamma-Terpinene	0.02000	<LOQ
alpha-Bisabolol	0.02000	<LOQ	gamma-Terpineol	0.02000	<LOQ
alpha-Humulene	0.03000	<LOQ	Geraniol	0.02000	<LOQ
alpha-Phellandrene	0.03000	<LOQ	Geranyl acetate	0.03000	<LOQ
alpha-Pinene	0.02000	<LOQ	Guaiol	0.03000	<LOQ
alpha-Terpinene	0.01000	<LOQ	Isoborneol	0.02000	<LOQ
alpha-Terpineol	0.02000	<LOQ	Isopulegol	0.03000	<LOQ
beta-Myrcene	0.03000	0.1300	Limonene	0.04000	0.05000
beta-Pinene	0.03000	<LOQ	Linalool	0.02000	<LOQ
Borneol	0.02000	<LOQ	Menthol	0.02000	<LOQ
Camphene	0.02000	<LOQ	Nerol	0.03000	<LOQ
Camphor	0.02000	<LOQ	Pulegone (+)	0.03000	<LOQ
Caryophyllene oxide	0.03000	<LOQ	Sabinene	0.02000	<LOQ
Cedrene	0.02000	<LOQ	Sabinene Hydrate	0.02000	<LOQ
Cedrol	0.03000	<LOQ	Terpinolene	0.02000	<LOQ
cis-Nerolidol	0.03000	<LOQ	trans-b-Ocimene	0.02000	<LOQ
cis-Ocimene	0.03000	<LOQ	trans-Caryophyllene	0.03000	0.06000
Eucalyptol	0.04000	<LOQ	trans-Nerolidol	0.04000	<LOQ
Farnesene	0.04000	0.09000	Valencene	0.03000	<LOQ
Fenchone	0.03000	<LOQ			

Terpene Totals	%	Pass/Fail
Total Terpenes	0.3300	PASS



**Alicia Caruso-Thomas**  
 Laboratory Director

04/23/2024  
*Alicia Caruso-Thomas*

**Phyto-Farma Labs**  
 49 John Hicks Drive  
 Warwick, NY 10990  
 (845) 988-0937



This is a Phyto-Farma certification that relates only to the material tested and shall not be reproduced, unless in its entirety, without written approval from Phyto-Farma. Test results are confidential, unless explicitly waived. All Pass/Fail results please reference state regulations released on 01FEB2024. Pass/Fail results do not use uncertainty, but is available upon request. The product represented has been tested by Phyto-Farma Labs using validated scientific methodologies. Note action levels are state determined thresholds for human safety and consumption. Acronym Definitions: ND - Not Detected, LOQ - Limit of Quantification, ULOQ - Upper Limit of Quantification; are terms used to describe the reliably measured smallest and largest concentrations. <LOQ\* denotes the result is above detection limit, but below quantifiable limit. CFU - Colony Forming Units. Cannabis Product Sampling SOP# SOP.T.20.010.



NYHO Labs LLC  
 Address: 37 Huntington Street  
 Cortland, NY 13045  
 Contact Name: Geoffrey Brown  
 Contact Phone:  
 License #: OCM-AUCP-22-000003  
 Sample ID: 4481



**Phyto-Farma Labs**  
 a Smithers company

**CERTIFICATE OF ANALYSIS**

Permit #: OCM-CPL-00004

Certificate: 4481.1

**Trace Metals**

**Pass**

**Sample Analysis**

Date: 04/22/2024 09:29 AM

SOP: NY.SOPT.40.050

Analyzed By: ICP-MS

Sample Weight: 0.13109 g

Analyst: Moni Kaneti

Analyte	LOQ (µg/g)	Action Limit (µg/g)	Results (µg/g)	Pass/Fail
Antimony (Sb)*	0.130	2.00	<LOQ	PASS
Arsenic (As)*	0.0700	0.200	<LOQ	PASS
Cadmium (Cd)*	0.0600	0.300	<LOQ	PASS
Chromium (Cr)*	0.360	110	<LOQ	PASS
Copper (Cu)*	0.390	30.0	<LOQ	PASS
Lead (Pb)*	0.0800	0.500	<LOQ	PASS
Mercury (Hg)*	0.0100	0.100	<LOQ	PASS
Nickel (Ni)*	0.110	2.00	0.258	PASS

\* Analyte is not included in ISO 17025 scope of accreditation

**Mycotoxin Analysis**

**Pass**

**Sample Analysis**

Date: 04/19/2024 09:11 AM

SOP: NY.SOPT.40.180

Analyzed By: LC-MS/MS

Sample Weight: 0.10119 g

Analyst: Stephanie Knapp

Analyte	LOQ (µg/g)	Action Limit (µg/g)	Results (µg/g)	Pass/Fail
Sum of Aflatoxins	-	0.020	0	PASS
Aflatoxin B1	0.0010	0.020	<LOQ	PASS
Aflatoxin B2	0.0020	0.020	<LOQ	PASS
Aflatoxin G1	0.0010	0.020	<LOQ	PASS
Aflatoxin G2	0.0020	0.020	<LOQ	PASS
Ochratoxin A	0.0020	0.020	<LOQ	PASS

Alicia Caruso-Thomas

04/23/2024

*Alicia Caruso-Thomas*

Laboratory Director

Phyto-Farma Labs

49 John Hicks Drive  
 Warwick, NY 10990  
 (845) 988-0937



Accreditation #: 121747

This is a Phyto-Farma certification that relates only to the material tested and shall not be reproduced, unless in its entirety, without written approval from Phyto-Farma. Test results are confidential, unless explicitly waived. All Pass/Fail results please reference state regulations released on 01FEB2024. Pass/Fail results do not use uncertainty, but is available upon request. The product represented has been tested by Phyto-Farma Labs using validated scientific methodologies. Note action levels are state determined thresholds for human safety and consumption. Acronym Definitions: ND - Not Detected, LOQ - Limit of Quantification, ULOQ - Upper Limit of Quantification; are terms used to describe the reliably measured smallest and largest concentrations. <LOQ\* denotes the result is above detection limit, but below quantifiable limit. CFU - Colony Forming Units. Cannabis Product Sampling SOP# SOP.T.20.010.



NYHO Labs LLC  
 Address: 37 Huntington Street  
 Cortland, NY 13045  
 Contact Name: Geoffrey Brown  
 Contact Phone:  
 License #: OCM-AUCP-22-000003  
 Sample ID: 4481

Certificate: 4481.1

**Pesticides LC**

**Pass**

**Sample Analysis**

Date: 04/19/2024 08:44 AM

SOP: NY.SOPT.040.270

Analyzed By: LC-MS/MS

Sample Weight: 0.97145 g

Analyst: Stephanie Knapp

Analyte	LOQ (ppm)	Action Limit (ppm)	Results (ppm)	Pass/Fail	Analyte	LOQ (ppm)	Action Limit (ppm)	Results (ppm)	Pass/Fail
Abamectin*	0.0180	0.500	<LOQ	PASS	Imidacloprid*	0.00800	0.400	<LOQ	PASS
Acephate*	0.00700	0.400	<LOQ	PASS	Indole-3-butyric acid*	0.00700	1.00	<LOQ	PASS
Acequinocyl*	0.0160	2.00	<LOQ	PASS	Kresoxim methyl*	0.0120	0.400	<LOQ	PASS
Acetamiprid*	0.00500	0.200	<LOQ	PASS	Malathion*	0.0110	0.200	<LOQ	PASS
Aldicarb*	0.00500	0.400	<LOQ	PASS	Metalaxyl*	0.0120	0.200	<LOQ	PASS
Azadirachtin*	0.0220	1.00	<LOQ	PASS	Methiocarb*	0.00400	0.200	<LOQ	PASS
Azoxystrobin*	0.00600	0.200	<LOQ	PASS	Methomyl*	0.0120	0.400	<LOQ	PASS
Bifenazate*	0.00600	0.200	<LOQ	PASS	Mevinphos*	0.0190	1.00	<LOQ	PASS
Bifenthrin*	0.00300	0.200	<LOQ	PASS	MGK-264*	0.0110	0.200	<LOQ	PASS
Boscalid*	0.0110	0.400	<LOQ	PASS	Myclobutanil*	0.0130	0.200	<LOQ	PASS
Carbaryl*	0.00600	0.200	<LOQ	PASS	Naled*	0.00500	0.500	<LOQ	PASS
Carbofuran*	0.00500	0.200	<LOQ	PASS	Oxamyl*	0.00800	1.00	<LOQ	PASS
Chlorantraniliprole*	0.00600	0.200	<LOQ	PASS	Paclobutrazol*	0.0150	0.400	<LOQ	PASS
Chloromequat chloride*	0.0190	1.00	<LOQ	PASS	Permethrins, Total*	0.00900	0.200	<LOQ	PASS
Chlorpyrifos*	0.00900	0.200	<LOQ	PASS	Phosmet*	0.00700	0.200	<LOQ	PASS
Clofentezine*	0.0100	0.200	<LOQ	PASS	Piperonyl Butoxide*	0.00600	2.00	<LOQ	PASS
Daminozide*	0.00400	1.00	<LOQ	PASS	Prallethrin*	0.00800	0.200	<LOQ	PASS
Diazinon*	0.00700	0.200	<LOQ	PASS	Propiconazole*	0.00600	0.400	<LOQ	PASS
Dichlorvos*	0.0120	1.00	<LOQ	PASS	Propoxur*	0.00800	0.200	<LOQ	PASS
Dimethoate*	0.00600	0.200	<LOQ	PASS	Pyrethrins*	0.0140	1.00	<LOQ	PASS
Dimethomorph*	0.00500	1.00	<LOQ	PASS	Pyridaben*	0.00600	0.200	<LOQ	PASS
Ethoprophos*	0.0130	0.200	<LOQ	PASS	Spinetoram, Total*	0.00500	1.00	<LOQ	PASS
Etofenprox*	0.00300	0.400	<LOQ	PASS	Spinosad, Total*	0.00600	0.200	<LOQ	PASS
Etoxazole*	0.00500	0.200	<LOQ	PASS	Spiromesifen*	0.0130	0.200	<LOQ	PASS
Fenhexamid*	0.0150	1.00	<LOQ	PASS	Spirotetramat*	0.00600	0.200	<LOQ	PASS
Fenoxycarb*	0.0110	0.200	<LOQ	PASS	Spiroxamine*	0.00400	0.200	<LOQ	PASS
Fenpyroximate*	0.00200	0.400	<LOQ	PASS	Tebuconazole*	0.0120	0.400	<LOQ	PASS
Flonicamid*	0.00700	1.00	<LOQ	PASS	Thiacloprid*	0.00800	0.200	<LOQ	PASS
Fludioxonil*	0.0170	0.400	<LOQ	PASS	Thiamethoxam*	0.00800	0.200	<LOQ	PASS
Hexythiazox*	0.00500	1.00	<LOQ	PASS					

\* Analyte is not included in ISO 17025 scope of accreditation

Alicia Caruso-Thomas  
 Laboratory Director

04/23/2024  
*Alicia Caruso-Thomas*

Phyto-Farma Labs  
 49 John Hicks Drive  
 Warwick, NY 10990  
 (845) 988-0937



This is a Phyto-Farma certification that relates only to the material tested and shall not be reproduced, unless in its entirety, without written approval from Phyto-Farma. Test results are confidential, unless explicitly waived. All Pass/Fail results please reference state regulations released on 01FEB2024. Pass/Fail results do not use uncertainty, but is available upon request. The product represented has been tested by Phyto-Farma Labs using validated scientific methodologies. Note action levels are state determined thresholds for human safety and consumption. Acronym Definitions: ND - Not Detected, LOQ - Limit of Quantification, ULOQ - Upper Limit of Quantification, are terms used to describe the reliably measured smallest and largest concentrations. <LOQ\* denotes the result is above detection limit, but below quantifiable limit. CFU - Colony Forming Units. Cannabis Product Sampling SOP# SOP.T.20.010.



NYHO Labs LLC  
 Address: 37 Huntington Street  
 Cortland, NY 13045  
 Contact Name: Geoffrey Brown  
 Contact Phone:  
 License #: OCM-AUCP-22-000003  
 Sample ID: 4481



**Phyto-Farma Labs**  
 a Smithers company

**CERTIFICATE OF ANALYSIS**

Permit #: OCM-CPL-00004

Certificate: 4481.1

**Pesticides GC**

**Pass**

**Sample Analysis**

Date: 04/22/2024 11:38 AM

SOP: NYS.SOPT.040.271

Analyzed By: GC-MS/MS

Sample Weight: 0.97145 g

Analyst: Destiny Ribadeneyra

Analyte	LOQ (ppm)	Action Limit (ppm)	Results (ppm)	Pass/Fail
Captan*	0.300	1.00	<LOQ	PASS
Chlordane*	0.0700	1.00	<LOQ	PASS
Chlorfenapyr*	0.100	1.00	<LOQ	PASS
Coumaphos*	0.190	1.00	<LOQ	PASS
Cyfluthrin*	0.110	1.00	<LOQ	PASS
Cypermethrin*	0.240	1.00	<LOQ	PASS
Fipronil*	0.170	0.400	<LOQ	PASS
Imazalil*	0.170	0.200	<LOQ	PASS
Methyl parathion*	0.0900	0.200	<LOQ	PASS
Pentachloronitrobenzene*	0.170	1.00	<LOQ	PASS
Trifloxystrobin*	0.110	0.200	<LOQ	PASS

\* Analyte is not included in ISO 17025 scope of accreditation

Alicia Caruso-Thomas

04/23/2024

*Alicia Caruso-Thomas*

Laboratory Director

Phyto-Farma Labs

49 John Hicks Drive  
 Warwick, NY 10990  
 (845) 988-0937



Accreditation #: 121747

This is a Phyto-Farma certification that relates only to the material tested and shall not be reproduced, unless in its entirety, without written approval from Phyto-Farma. Test results are confidential, unless explicitly waived. All Pass/Fail results please reference state regulations released on 01FEB2024. Pass/Fail results do not use uncertainty, but is available upon request. The product represented has been tested by Phyto-Farma Labs using validated scientific methodologies. Note action levels are state determined thresholds for human safety and consumption. Acronym Definitions: ND - Not Detected, LOQ - Limit of Quantification, ULOQ - Upper Limit of Quantification; are terms used to describe the reliably measured smallest and largest concentrations. <LOQ\* denotes the result is above detection limit, but below quantifiable limit. CFU - Colony Forming Units. Cannabis Product Sampling SOP# SOP.T.20.010.



NYHO Labs LLC  
 Address: 37 Huntington Street  
 Cortland, NY 13045  
 Contact Name: Geoffrey Brown  
 Contact Phone:  
 License #: OCM-AUCP-22-000003  
 Sample ID: 4481



**Phyto-Farma Labs**  
 a Smithers company

**CERTIFICATE OF ANALYSIS**

Permit #: OCM-CPL-00004

Certificate: 4481.1

**Residual Solvents**

**Pass**

**Sample Analysis**

Date: 04/23/2024 09:13 AM

SOP: NYS.SOPT.040.272

Analyzed By: GC-MS

Sample Weight: 0.10311 g

Analyst: Destiny Ribadeneyra

Analyte	LOQ (ppm)	Action Limit (ppm)	Results (ppm)	Pass/Fail
1,2-Dichloroethane (Ethylene dichloride, Ethylene chloride)	0.670	5.00	<LOQ	PASS
2-Propanol (Isopropanol, Isopropyl alcohol)	21.7	5000	<LOQ	PASS
Acetone (2-Propanone)	15.9	5000	<LOQ	PASS
Acetonitrile	0.850	410	<LOQ	PASS
Benzene	0.710	2.00	<LOQ	PASS
Butanes, Total	0.350	5000	487	PASS
Chloroform	0.540	60.0	<LOQ	PASS
Dichloromethane (Methylene chloride)	1.07	600	<LOQ	PASS
Dimethyl sulfoxide (DMSO)	0.660	5000	<LOQ	PASS
Ethanol (Ethyl alcohol)	10.0	5000	<LOQ	PASS
Ethyl acetate (Acetic acid ethyl ester)	18.4	5000	<LOQ	PASS
Ethyl ether (Diethyl ether, 1,1'-Oxybisethane)	0.440	5000	<LOQ	PASS
Heptane (n-Heptane)	0.360	5000	<LOQ	PASS
Hexanes, Total	0.390	290	<LOQ	PASS
Methanol (Methyl alcohol)	2.47	3000	<LOQ	PASS
Pentanes, Total	0.370	5000	<LOQ	PASS
Propane	0.530	5000	<LOQ	PASS
Toluene (Methylbenzene)	2.34	890	<LOQ	PASS
Trichloroethane (1,1,1-)	0.410	1500	<LOQ	PASS
Xylenes, Total (ortho-, meta-, para-)	2.65	2170	<LOQ	PASS

Alicia Caruso-Thomas

04/23/2024

*Alicia Caruso-Thomas*

Laboratory Director

Phyto-Farma Labs

49 John Hicks Drive  
 Warwick, NY 10990  
 (845) 988-0937



Accreditation #: 121747

This is a Phyto-Farma certification that relates only to the material tested and shall not be reproduced, unless in its entirety, without written approval from Phyto-Farma. Test results are confidential, unless explicitly waived. All Pass/Fail results please reference state regulations released on 01FEB2024. Pass/Fail results do not use uncertainty, but is available upon request. The product represented has been tested by Phyto-Farma Labs using validated scientific methodologies. Note action levels are state determined thresholds for human safety and consumption. Acronym Definitions: ND - Not Detected, LOQ - Limit of Quantification, ULOQ - Upper Limit of Quantification; are terms used to describe the reliably measured smallest and largest concentrations. <LOQ denotes the result is above detection limit, but below quantifiable limit. CFU - Colony Forming Units. Cannabis Product Sampling SOP# SOP.T.20.010.



NYHO Labs LLC  
 Address: 37 Huntington Street  
 Cortland, NY 13045  
 Contact Name: Geoffrey Brown  
 Contact Phone:  
 License #: OCM-AUCP-22-000003  
 Sample ID: 4481



**Phyto-Farma Labs**  
 a Smithers company

**CERTIFICATE OF ANALYSIS**

Permit #: OCM-CPL-00004

Certificate: 4481.1

**Microbial Impurities - MDG**

**Pass**

**Sample Analysis**

**Date:** 04/23/2024 03:37 PM

**SOP:** NYS.SOPT.40.273

**Analyzed By:** PCR

**Analyst:** Kristy Lee

Analyte	Microbial Type	LOQ (CFU/g)	Allowable Limit	Results	Pass/Fail
Shiga toxin-producing Escherichia coli	Bacterial	1	Not Detected	Not Detected	PASS
Salmonella species	Bacterial	1	Not Detected	Not Detected	PASS
Aspergillus flavus	Fungal	1	Not Detected	Not Detected	PASS
Aspergillus niger	Fungal	1	Not Detected	Not Detected	PASS
Aspergillus terreus	Fungal	1	Not Detected	Not Detected	PASS
Aspergillus fumigatus	Fungal	1	Not Detected	Not Detected	PASS

**Alicia Caruso-Thomas**

04/23/2024

*Alicia Caruso-Thomas*

Laboratory Director

**Phyto-Farma Labs**

49 John Hicks Drive  
 Warwick, NY 10990  
 (845) 988-0937



PJLA  
 Testing  
 Accreditation #: 121747

This is a Phyto-Farma certification that relates only to the material tested and shall not be reproduced, unless in its entirety, without written approval from Phyto-Farma. Test results are confidential, unless explicitly waived. All Pass/Fail results please reference state regulations released on 01FEB2024. Pass/Fail results do not use uncertainty, but is available upon request. The product represented has been tested by Phyto-Farma Labs using validated scientific methodologies. Note action levels are state determined thresholds for human safety and consumption. Acronym Definitions: ND - Not Detected, LOQ - Limit of Quantification, ULOQ - Upper Limit of Quantification; are terms used to describe the reliably measured smallest and largest concentrations. <LOQ> denotes the result is above detection limit, but below quantifiable limit. CFU - Colony Forming Units. Cannabis Product Sampling SOP# SOP.T.20.010.





NYHO Labs LLC  
 Address: 37 Huntington Street  
 Cortland, NY 13045  
 Contact Name: Geoffrey Brown  
 Contact Phone:  
 License #: OCM-AUCP-22-000003  
 Sample ID: 4481



**Phyto-Farma Labs**  
 a Smithers company

**CERTIFICATE OF ANALYSIS**  
 Permit #: OCM-CPL-00004

Certificate: 4481.1

**Microbial Impurities - TAPC**

**Pass**

**Sample Analysis**

**Date:** 04/22/2024 08:07 AM      **SOP:** NYS.SOPT.040.200  
**Analyzed By:** Plating  
**Analyst:** Kristy Lee

Analyte	LOQ (CFU/g)	Action Limit (CFU/g)	Results (CFU/g)	Pass/Fail
Total Aerobic Bacteria/CDP-TC	5	10000	<LOQ	PASS

**Microbial Impurities - TYMC**

**Pass**

**Sample Analysis**

**Date:** 04/22/2024 07:27 PM      **SOP:** NYS.SOPT.040.200  
**Analyzed By:** Plating  
**Analyst:** Kristy Lee

Analyte	LOQ (CFU/g)	Action Limit (CFU/g)	Results (CFU/g)	Pass/Fail
Total Yeast and Mold	5	1000	<LOQ	PASS
Mold Count	5	1000	<LOQ	PASS
Yeast Count	5	1000	<LOQ	PASS

**Alicia Caruso-Thomas**  
 Laboratory Director

04/23/2024  
*Alicia Caruso-Thomas*

**Phyto-Farma Labs**  
 49 John Hicks Drive  
 Warwick, NY 10990  
 (845) 988-0937



This is a Phyto-Farma certification that relates only to the material tested and shall not be reproduced, unless in its entirety, without written approval from Phyto-Farma. Test results are confidential, unless explicitly waived. All Pass/Fail results please reference state regulations released on 01FEB2024. Pass/Fail results do not use uncertainty, but is available upon request. The product represented has been tested by Phyto-Farma Labs using validated scientific methodologies. Note action levels are state determined thresholds for human safety and consumption. Acronym Definitions: ND - Not Detected, LOQ - Limit of Quantification, ULOQ - Upper Limit of Quantification; are terms used to describe the reliably measured smallest and largest concentrations. <LOQ\* denotes the result is above detection limit, but below quantifiable limit. CFU - Colony Forming Units. Cannabis Product Sampling SOP# SOP.T.20.010.