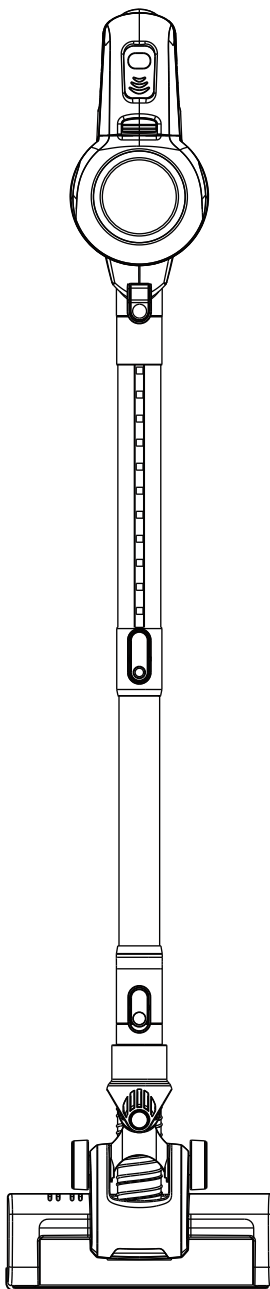


ORFELD®

Instruction Manual

V20

Cordless Vacuum
Cleaner



www.orfeldtech.com
support@orfeltech.com

Contents

English	1
Deutsch	10
Français	19
Español	28
Italiano	37

Safety Instructions

IMPORTANT SAFETY INSTRUCTIONS
FOR HOUSEHOLD USE ONLY.
PLEASE READ CAREFULLY BEFORE
USE

Use only as described in this ORFELD
Owner's Guide. Do not carry out any
maintenance other than that shown in this
manual, or advised by the ORFELD
Helpline.

WARNING

To reduce the risk of injury, fire, electric shock, and property damage resulting from improper use of the appliance, carefully observe the following instructions. This unit contains electrical connections and moving parts that potentially present risk to the user.

THE FLOOR NOZZLE, WAND, AND HANDHELD VACUUM CONTAIN ELECTRICAL CONNECTIONS:

- These are NOT serviceable parts. DONOT use to vacuum any liquids.
- DO NOT immerse in water when cleaning.
- If handheld vacuum/wand is damaged,discontinue use.
- To avoid fire, explosion, or injury, inspect Power Pack and chargers for any damage before use. DO NOT use vacuum cleaner with a damaged power pack or charger.
- DO NOT use outdoors or on wet surfaces, Use only on dry surfaces.
- If vacuum cleaner is not working as it should, or has been dropped, damaged, left outdoors, or immersed in water,

return it to ORFELD Company for examination, repair, or adjustment.

- DO NOT handle charger or vacuum cleaner with wet hands.
- DO NOT leave vacuum cleaner unattended.
- Keep power pack away from heated surfaces.
- Always turn off this appliance before connecting or disconnecting floor nozzle.
- Use only ORFELD chargers and batteries. Other types of batteries may burst , causing injury and damage.
- Use ORFELD Power Pack Charging Dock on at and stable surfaces only.
- DO NOT incinerate appliance, even if it is severely damaged, as power pack may explode in a fire.

GENERAL USE

Use only as described in this manual

- Keep your work area well lit.
- Keep the vacuum cleaner moving over the carpet surface at all times to avoid damaging the carpet fibers.
- DO NOT place vacuum cleaner on unstable surfaces such as chairs or tables.
- DO NOT put any objects into openings.DO NOT use with any opening blocked; keep free of dust, lint,hair, and anything that may reduce air flow.
- DO NOT allow young children to operate the appliance or use as a toy. Close supervision is necessary when any appliance is used near children.
- DO NOT use without Soft Roller, dust cup door, and all filters in place.
- DO NOT use if air flow is restricted; if the air paths or the floor nozzle become blocked, turn off the vacuum cleaner and remove battery. Clear all obstructions

Safety Instructions

before returning battery to vacuum and powering on again.

- Keep floor nozzle away from hair, face, fingers, uncovered feet, or loose clothing.
- Only use manufacturer's recommended attachments.
- DO NOT charge power pack at temperatures below 50°F(10°C) or above 104°F(40°C).
- Store the appliance indoors. DO NOT use or store it below 37.4°F(3°C). Ensure the appliance is at room temperature before operating.

DUST CUP/FILTERS/ACCESSORIES

Before turning on the vacuum:

- Make sure that all filters are thoroughly dry after routine cleaning.
- Make sure Soft Roller, all covers and filters are in place after routine maintenance.
- Make sure accessories are free of blockages and keep openings away from face and body.
- Use only ORFELD brand filters and accessories. Using other brands will void warranty.

GENERAL CLEANING

- DO NOT vacuum up hard or sharp objects such as glass, nails, screws, or coins that could damage the vacuum cleaner.
- DO NOT vacuum up drywall dust, replace ash, or embers. DO NOT use as an attachment to power tools for dust collection.
- DO NOT vacuum up smoking or burning objects such as hot coals, cigarette butts, or matches.
- DO NOT vacuum up flammable or combustible materials (e.g., lighter liquid,

gasoline, or kerosene) or use vacuum in areas where they may be present.

- DO NOT vacuum up toxic solutions (e.g., chlorine bleach, ammonia, or drain cleaner).
- DO NOT use in an enclosed space where vapors are present from paint, paint thinner, moth-proofing substances, flammable dust, or other explosive or toxic materials.
- DO NOT vacuum up any liquids.
- DO NOT immerse vacuum cleaner in water or other liquids.
- Use extra care when cleaning on stairs.

LI-ION BATTERY BATTERY

- The Power Pack Battery is the power source for the appliance. When the Power Pack Battery is connected to the appliance, DO NOT carry the appliance with your finger on the power button. DO NOT charge appliance with the power on.
- Disconnect the Power Pack Battery from the appliance before making any adjustments or troubleshooting.
- Use only ORFELD chargers. Use of incorrect charger may create a risk of fire when used with Power Pack Battery.
- Use appliance only with specifically designated Power Pack Batteries. Use of any other battery packs may create a risk of injury and fire.
- When Power Pack Battery is not in use, keep it away from all metal objects, such as paper clips, coins, keys, nails, or screws. Shorting the battery terminals together increases the risk of fire or burns.
- Under abusive conditions, liquid may be ejected from the power pack.

Safety Instructions

Avoid contact with liquid, as it may cause irritation or burns. If contact occurs, flush with water. If liquid contacts eyes, seek medical help.

- DO NOT expose power pack or appliance to fire or temperature above 266°F (130°C) as it may cause explosion.
- Follow all charging instructions and DO NOT charge the power pack or appliance outside of the temperature range specified in the instructions. Charging improperly or at temperatures outside of the specified range may damage the Power Pack Battery and increase the risk of fire.
- Appliance should only be serviced by a qualified repair person using only identical replacement parts. To ensure safety, DO NOT modify or attempt to repair the appliance or the power pack yourself, except as indicated in the instructions for use and care.
- Power Pack Battery should not be stored at temperatures below 37.4°F (3°C) or above 104°F (40°C) to maintain long-term battery life.

Service:

01. Please check the product for damage and abnormality before use.
02. If there is any damage or defect in the product, do not use it;
03. Please find professional after-sales services or authorized professionals to carry out maintenance according to relevant safety regulations.
Maintenance by non-professionals may be dangerous;
04. Please do not modify this product in any way to prevent harm or damage
05. Please use replacement parts or spare

parts provided or recommended by the manufacturer.

Useful tips:

01. This vacuum cleaner is a dry vacuum cleaner;
02. This vacuum cleaner cannot vacuum liquids or wet surfaces;
03. This vacuum cleaner cannot vacuum any burning or smoking dust;
04. Please use only in accordance with the instructions of the manual;
05. Please do not use on cement pavement, tarmac and other rough surfaces.

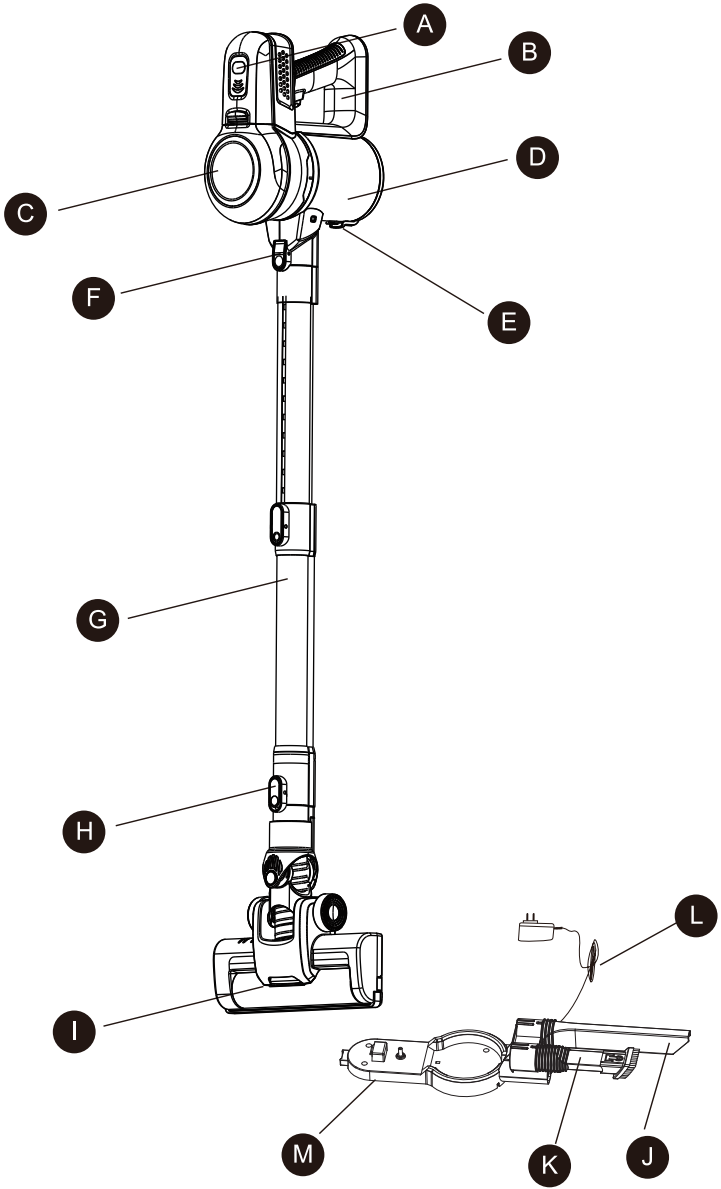
Safety Instructions

WARNING

01. Please only use a dry cloth to clean or towel to clean the vacuum cleaner surface. Please do not use water, solvents or polishing agents to clean the surface of the appliance;
02. Do not soak the vacuum cleaner in the water or wash it in the dishwasher

- A. Power adjustment button
- B. On/off switch
- C. Dust Container Lock
- D. Dust Container
- E. Container Release button
- F. Extension Wand Tube Lock
- G. Extension Wand Tube
- H. Motor Head Lock
- I. Motor head
- J. Long Nozzle Crevice Tool
- K. 2in 1 Flat Brushh
- L. Adapter
- M. Charging Base

Product Introduction

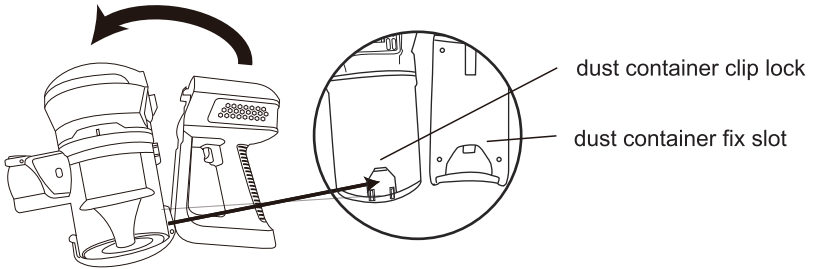


Product Introduction

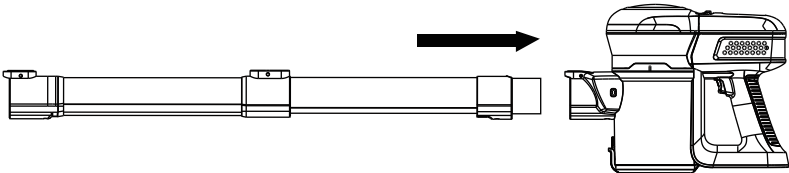
Modes of operation:

1. Operating in Broom and Stick mode:

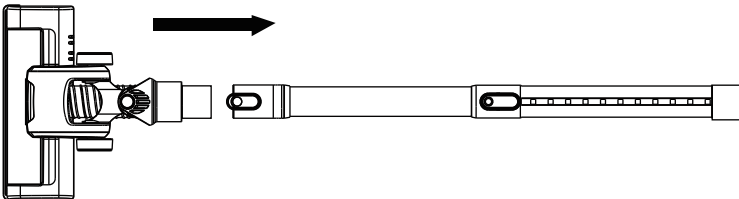
- 1) To properly install dust container on to handle core, first ensure the dust container clip lock is inserted into the appropriate slot on the handle core, as illustrated below;



- 2) Insert the extension wand tube in to suction intake slot firmly until you hear a clip on “snap” sound as illustrated below;



- 3) Install the rotor brush head with the extension wand tube as illustrated below, install firmly until you hear a clip on “snap” sound;

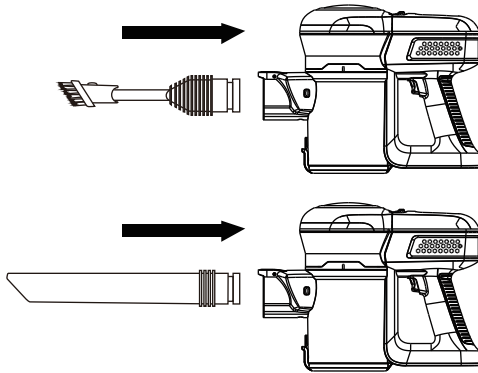


- 4) Make sure you have the battery pack charged and inserted in to the handle core and you are ready to start in broom or stick mode vacuuming

Product Introduction

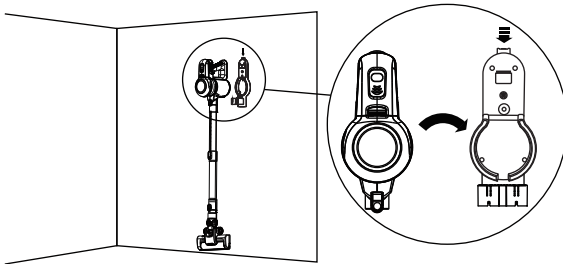
2. In Hand Held Mode:

Choose the accessory best fit for you needs and insert as illustrated below into the suction intake on the dust container combined with the handle core. Insert firmly untill you here a clip on "snap" sound



3. Charging Methods:

- 1) As the battery level indicator starts to countdown one bar at a time, this means low battery and please charge the battery, simply insert the vacuum cleaner on the charging base and when charging the indicator lights will flash green



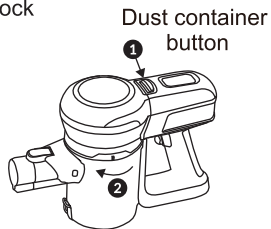
- 2) When the indicator light slots are all full and green and not flashing, this means the battery level is full;



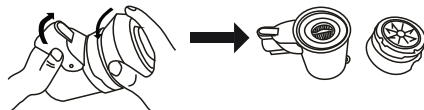
Product Introduction

4. Cleaning and Maintenance:

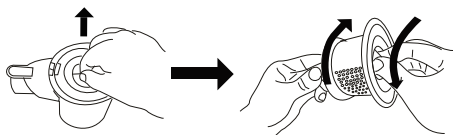
1) Press down on dust container button to unlock



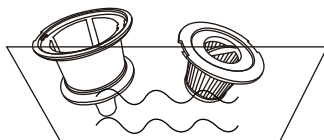
2) As per 2nd illustration twist upper and lower parts in opposite directions to open dust container



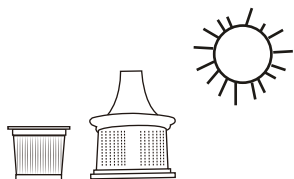
3) As per 3rd illustration pull out HEPA filter



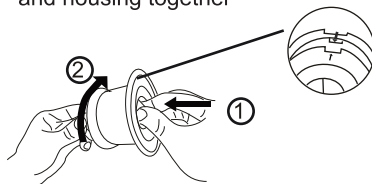
4) HEPA Housing and filter are washable



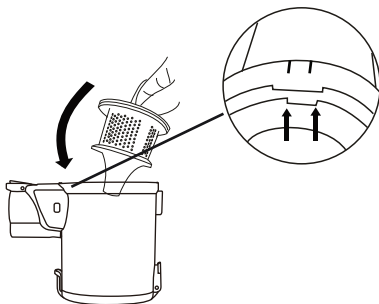
5) After washing the HEPA Filter and Housing please dry completely



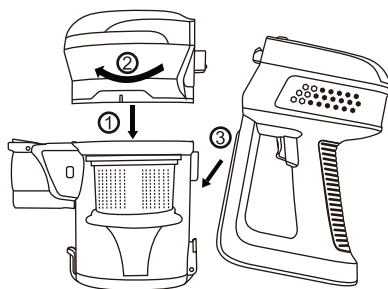
6) As per 6th illustration install HEPA filter and housing together



7) Reinstall washed and completely dried out (or new) HEPA filter, on to Dust Container as illustrated below



8) Reassemble the Dust Container as per the illustration below



Trouble Shooting

Trouble Shooting:

Q1: Suction capacity decreases. /

Abnormal sound or operating noise which becomes louder.

01. Empty dust container
02. Make sure the dust container and handle core is installed properly
03. Make sure HEPA housing and HEPA filter are installed properly
04. Clean filter and housing

Q2: The appliance does not run.

01. Battery may be empty charge the battery
02. Clear the motor brush head

Q3: The battery does not charge.

01. Please make sure adapter and charge base are properly connected
02. Please inspect charge base for damage or loose connection

Technical Specifications:

Battery: 22.2V/2200mA

Time to Charge: 4.5-5 hours

Charger Input: 26.5V/500mA

Net Weight: 2.3kg

Run time: 30min (low), 15min (High)

Power: 160W

Vacuum pressure: 17Kpa

Air flow rate: 20dm³/min