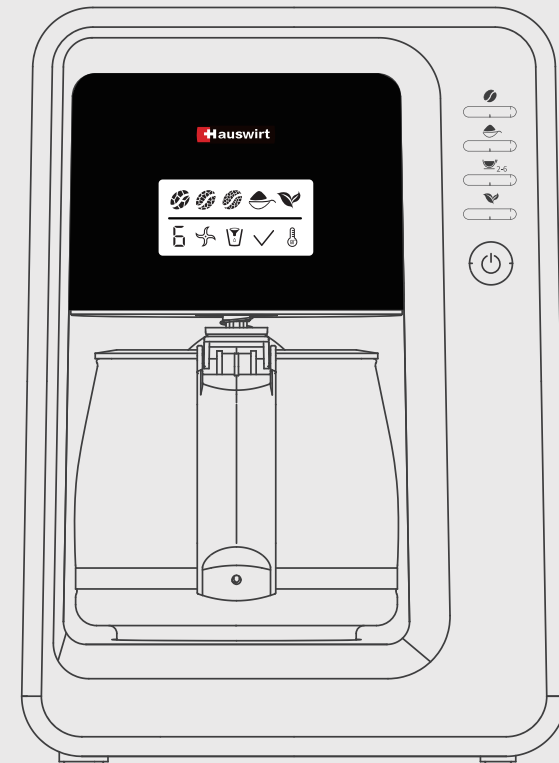




H



GRIND & BREW COFFEE MAKER

K6



Qingdao Hauswirt Electric Co.,LTD.

Website: www.hauswirt.com

E-mail: overseas@hauswirt.com

Addr: NO.336 Yinhe Road,Xiazhuang Street,ChengYang District,Qingdao,China

The Product Instructions
Version Number: 20201027

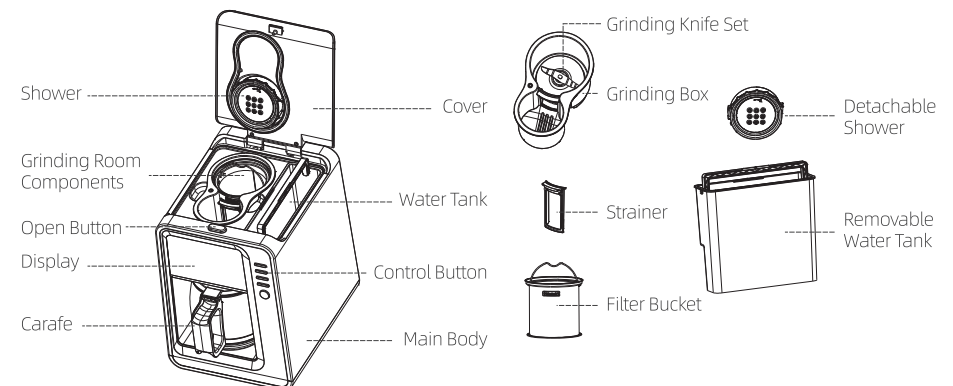
I. Important Safeguards

1. Before connecting the power, please make sure that the voltage you use is consistent with the rated voltage of the product.
2. The coffee-maker shall not be placed in a cabinet when in use.
3. Always disconnect the appliance from the supply if it is left unattended and before assembling, disassembling or cleaning.
4. Do not use in high temperature places.
5. When disconnecting the power, unplug it from the socket and do not pull on the power cord.
6. Unplug the socket before changing accessories or approaching parts that move in use using or cleaning the coffee machine.
7. Allow the coffee basket to be removed from the machine and cleaned.
8. If the supply cord is damaged, it must be replaced by the manufacturer, its service agent or similarly qualified persons in order to avoid a hazard.
9. If the coffee machine is malfunctioning or is not working properly due to other reasons, please do not disassemble it by yourself, take the coffee machine to the designated, Retail or agency service center to do testing and repair to avoid danger.
10. Do not use accessories other than those provided by the supplier, as this may damage the coffee machine and cause personal injury or danger.
11. The coffee machine should be placed on a table or a flat place. Do not hang the power cord on the edge of the table or countertop to avoid falling damage.
12. Make sure that the power cord is not in contact with the hot parts of the coffee maker.
13. Care shall be taken when handling the sharp cutting blades, emptying the container and during cleaning
14. Only use the glass container that provide by the supplier. Handle it carefully to avoid damaging the glass. **WARNING:** Do not use the appliance if the glass surface is cracked.
15. The container is designed for use with this appliance. It must never be used on a range top.
16. The glass should not be placed on a heat-preserving plate for a long time to dry in a dry state, otherwise the glass will break easily.
17. This appliance cannot be used to grind coffee beans alone. When using coffee beans to brew coffee, the appliance must be filled with water.
18. This appliance can only be used to grind coffee beans. Don't grind other food.
19. The appliance cannot be operated with an external timer or an independent remote control system.
20. Keep this manual for future use.If there are any questions, please call the repairer : 9093784755 ext 5171.

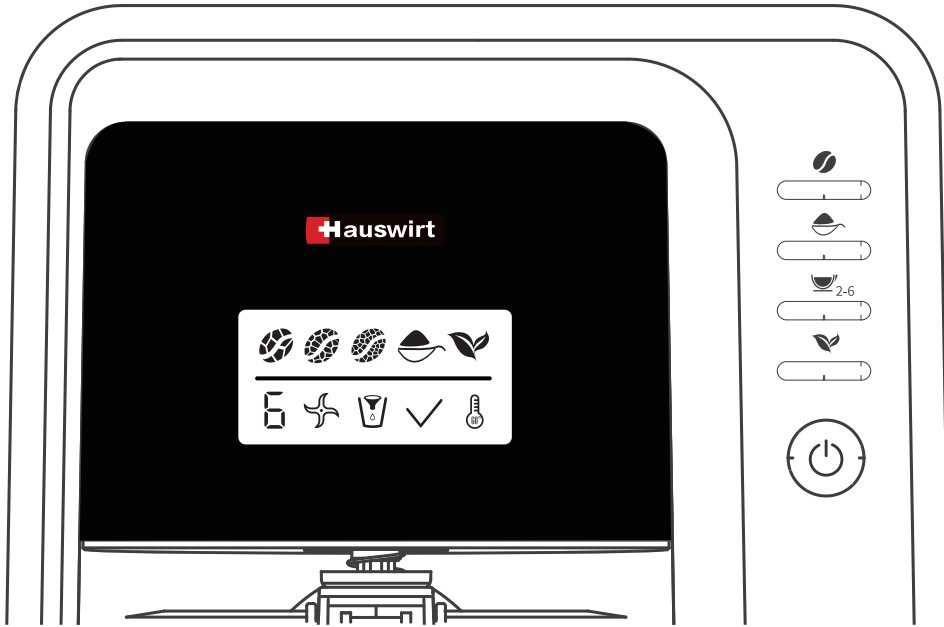
21. The appliance must not be immersed.
22. The heating element surface is subject to residual heat after use.
23. Please pay attention to the sharp edge of the blade when cleaning. Make sure that the blade hurts your hand.
24. Please wash it in good time after each use and put it in a dry and clean place, otherwise it will generate odors due to high temperature and humidity.
25. (GS) This appliance can be used by persons with reduced physical, sensory or mental capabilities or lack of experience and knowledge if they have been given supervision or instruction concerning use of the appliance in a safe way and understand the hazards involved.
This appliance shall not be used by children. Keep the appliance and its cord out of reach of children. Children being supervised not to play with the appliance.
26. (CB) The appliance is not to be used by persons (including children) with reduced physical, sensory or mental capabilities, or lack of experience and knowledge, unless they have been given supervision or instruction. Children being supervised not to play with the appliance.
27. (GS) Cleaning and user maintenance shall not be made by children.
(CB) Cleaning and user maintenance shall not be made by children without supervision.
28. This appliance is intended to be used in household:
 - 1) Avoid contacting moving parts.
 - 2) Check hopper for presence of foreign objects before using

II. Product Description

Description of Control Panel:



Description of Control Panel:



	Design	Explanation
	Initial power-on interface	Initial power-on interface
	Default status interface	4 cups by default, coarse grinding, all icons are always on
	Lightly ground coffee beans	Grind the coffee beans according to the coarse powder grinding standard
	Coffee beans moderately ground	Ground coffee beans according to medium grinding standards
	Coffee beans heavily ground	Ground coffee beans according to fine powder grinding standards
	coffee powder	When this button is pressed, it means that the machine skips the grinding step and directly brews the coffee powder added
	Bubble tea	Click to enter bubble tea mode
	Cup size	Tap the cup to switch between 2/3/4/5/6 and F (maximum) cup

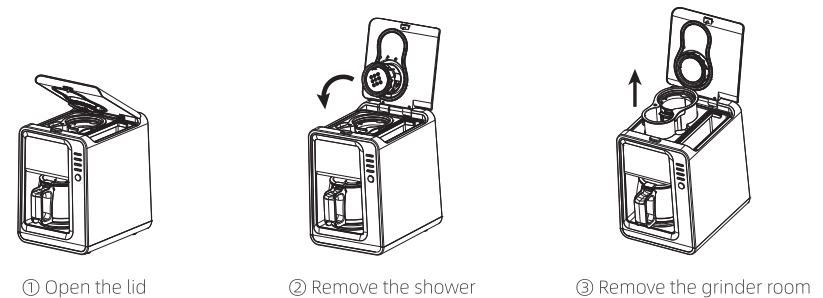
	Design	Explanation
	Ground beans	Prompt the machine is grinding coffee beans
	Coffee or tea extraction	Prompt the machine is extracting coffee
	finished condition	Prompt coffee extraction is complete
	heat preservation	Prompt the machine to enter the insulation state
	Coffee bean mode button	Tap to enter coffee bean operation mode
	Coffee powder mode button	Tap to enter coffee powder mode
	Cup volume adjustment button	Tap to enter coffee cup volume adjustment mode
	Bubble tea mode	Click to enter bubble tea mode
	Start / Pause button	Tap Start / Pause, long press 2S to return to the main interface

III. Operation Guide

Instructions for first time use:

Before the first use, check whether the accessories are complete and the product is not damaged. When using the product for the first time or after a long period of time, dust and foreign objects may adhere to the inside of the coffee machine. Please shower, grinder room, filter cartridge, filter, Water tank and glass are removed separately and cleaned with water before reuse.

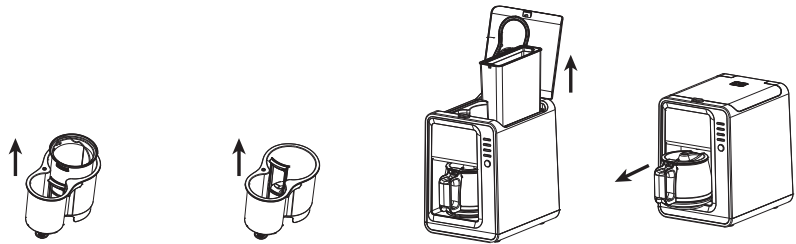
Disassembly method (as shown): Remove each component of the coffee machine in order.



① Open the lid

② Remove the shower

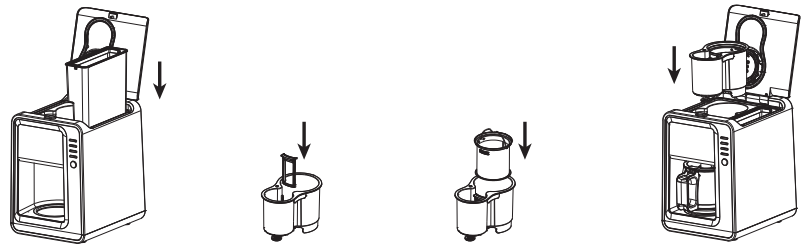
③ Remove the grinder room



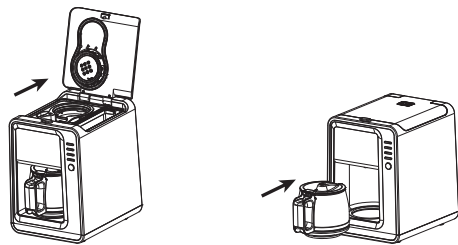
④ Remove the filter cartridge ⑤ Remove the filter ⑥ Remove the Water tank ⑦ Remove the glass

Installation method:

1. Dry the components of the coffee machine, install the water tank in the proper amount and install it back in place (as shown).



① Assemble the water tank ② Insert the strainer ③ Put the filter bucket in place ④ Assemble the grinder room



⑤ Assemble the shower ⑥ Put the carafe in place

2. The machine is powered on, press "Coffee Powder", select the cup size "F", and then press the "☺" button.
3. Pour out the hot water and clean the coffee pot again.
4. Repeated cleaning 1-2 times, the product is used normally.

Warning: Never add hot water to the water tank!

Suggested dosage of coffee beans / ground powder:

When adding coffee powder or coffee beans, it is recommended to use the standard measuring spoon. A flat spoon is about 5g coffee beans and 6g ground coffee.

Cup amount	Coffee powder (spoon)	coffee beans(spoon)
2	2	2-3
3	3	3-4
4	4	4-5
5	5	5-6
6	6	6-7
F	suitable	suitable

Remark:

"F" is a high-end player mode. In this mode, no matter how much water is in the water tank, it will be used for brewing coffee; therefore, in "F" mode, the amount of beans / flour and water need to be adjusted by experience. The cup quantity does not exceed 8 cups. In addition, if the machine is not used for a long time, the residual water in the machine needs to be emptied before storage. At this time, the function "F" can also be used. For details, please refer to the description in the "Cleaning and Maintenance" section of this manual.

Special function description:

In order to effectively protect the safety of users, this product is equipped with safety switches in multiple places on the machine. The product can work properly only if the grinder room and the top cover are installed in place. Open the upper cover during normal work, the micro switch is turned off, and the machine enters the pause rotation state. With the screen flashing, the buzzer continuously sounds a warning. After closing the cover, the machine will continue to work.

Basic operation instructions:

1. Make sure that the shower, grinder room, filter cartridge, strainer, water tank, and glass are in place, and that the water tank has been filled with sufficient water.

Warning: ① Do not add hot water in the water tank!

② In order to protect the taste of coffee and prevent scaling, please use pure water!

2. Refer to this manual for the recommended amount of coffee beans/powder, according to the number of coffee cups you need, use the included coffee measuring spoon to measure the required coffee beans/powder into the grinder room.

3. Plug in the power, the coffee machine will sound a "drop", at this time indicates that the coffee machine enters the standby interface.
 - A. Operation steps of coffee beans:
 - ① Click the "☪" button, and the corresponding grinder thickness icon on the screen will flash in sequence, "☪、☪、☪" and select the desired grind thickness;
Remarks:
The thicker the grind, the heavier the acidity of the coffee, and the finer the grind, the more bitter and sweet the coffee will be. Choose the appropriate thickness according to your taste.
 - ② Click the "☪₂₋₆" button, the corresponding cup quantity icon on the screen will flash in sequence from "2、3、4、5、6、F", select the number of cups corresponding to the amount of coffee beans added;
 - ③ Click the "⏻" button, the machine enters the fully automatic working state, To show the current status, the "☪、☪、☪" icon will flash in sequence, To remind the current working status;
 - ④ When the buzzer sounds twice and the "✓" icon flashes, the coffee brewing is complete.
 - B. Coffee powder operation steps:
 - ① Click the "☪" button, the "☪" icon flashes on the screen;
 - ② Click the "☪₂₋₆" button, the corresponding cup volume icon on the screen will flash in sequence from "2、3、4、5、6、F", select the number of cups corresponding to the amount of coffee powder added;
 - ③ Click the "⏻" button, the machine enters the fully automatic working state, To show the current status, the "☪、☪、☪" icon will flash in sequence, To remind the current working status;
 - ④ When the buzzer sounds twice and the "✓" icon flashes, it means the coffee is brewed.
 - C. Operation steps of making tea:
 - ① Click the "☪" button, the "☪" icon flashes on the screen;
 - ② Click the "☪₂₋₆" button, the corresponding cup volume icon on the screen will flash in sequence from "2、3、4、5、6、F";
 - ③ Click the "⏻" button, the machine enters the fully automatic working state, To show the current status, the "☪、☪、☪" icon will flash in sequence, To remind the current working status.
4. After brewing tea or coffee, the machine automatically enters the heat preservation state, the "☪" icon flashes, and the default heat preservation is 30 minutes. After the heat preservation is completed, the buzzer sounds three times and the machine enters the

standby state. If you do not need to keep warm, you can long press the "⏻" to stop the work after the brewing is completed and go to the standby state.

In the heat preservation state, short press the coffee bean / coffee powder / cup volume / tea brewing button to exit the heat preservation state.

- Warning:**
- ① **The temperature of the freshly brewed coffee is very high. Please hold the handle when taking out the coffee pot. Do not touch the glass part to avoid burns!**
 - ② **During the coffee making process, a small amount of steam will escape from the vents on the top cover. Do not open the top cover at this time to avoid being burned by the steam!**
 - ③ **After the coffee is kept warm for a long time, the aroma and taste will fade, please enjoy it as soon as possible!**

IV、Cleaning And Maintenance

1. The product should be cleaned promptly and thoroughly each time the product brewed to prevent odor from coffee grounds; if it is not used for a long time, please empty the water tank and the residual water inside the machine. The coffee machine must be descaled regularly, otherwise the brewed coffee will affect the taste. If you notice that the machine will take longer to brew, or that the amount of coffee brewed is less than before, these phenomena indicate that the machine needs to be descaled.
2. Descaling can only be done with a professional citric acid descaling agent for the coffee machine. The frequency of descaling depends on the hardness and working frequency of the water. In general, please refer to the following cycle operation:
Soft water, the frequency of use is at least once every 2 days, please at least once every 3 months;
Hard water, the frequency of use is at least 2 days-times, please at least once every 1 month;
3. Clean all detachable parts such as funnel cover, funnel, glass carafe and water tank etc with warm water and the small brush at one end of spoon after each use.
4. Wipe external surface of product with a soft, damp cloth to remove stains.
5. Wipe the warming plate with a damp cloth and do not use abrasive detergent for cleaning.

Failure phenomenon	Failure cause analysis	solution
No response during operation	Loose power plug	Connect the power cord plug and socket in place.
	The top cover is not closed or not locked in place	Close the top cover properly
	The grinder room is not installed	Grinding room installed in place
No coffee dripping or low coffee output	Determine if there is water in the water tank	Fill the water tank with the corresponding amount of water
	Drip or filter clogging	Clean the drip valve and filter
	The added coffee powder or coffee beans do not match the amount of water, There are too many beans and powder, but too little water	Strictly refer to the dosage recommendations of coffee beans and coffee powder
	Whether the pipeline has serious scale adhesion	Refer to the cleaning operation, use citric acid for cleaning
Coffee spilling from coffee cup	The water filling in the water tank exceeds the maximum limit	Please keep the water in the tank below max
There is too much coffee powder in the coffee cup	Is the filter in place or not	Put the filter back correctly
Coffee spill in the grinder room	Excessive coffee beans or coffee powder	Strictly follow the recommended amount of coffee powder



This marking indicates that this product should not be disposed with other household wastes throughout the EU. To prevent possible harm to the environment or human health from uncontrolled waste disposal, recycle it responsibly to promote the sustainable reuse of material resources. To return your used device, please use the return and collection systems or contact the retailer where the product was purchased. They can take this product for environmental safe recycling.