



CHAMPAGNE  
DE LOZEY

洛琦香槟

*La curiosité*

心之所向 · 洛琦香槟



CHAMPAGNE  
DE LOZEY

洛琦香槟



传承  
传奇品牌，一人铸就。

HERITAGE

*A story of champagne,  
the story of a man.*

*Champagne De Lozey  
is first and foremost  
about one man:  
Philippe Cheurlin.*

*Philippe belongs to a large and  
highly renowned family of  
winegrowers from the village of  
Celles-sur-Ource in the Côte des Bar.  
He took over from his father in the  
1980s and while humbly respecting  
his family's roots and heritage, he  
tailored its ancestral recipe to reflect  
his personal style and created  
his own brand: De Lozey.*

洛琦香槟背后有一位灵魂人物：  
菲利普·乔林 (Philippe Cheurlin)。

菲利普来自享誉盛名的酿酒世家，基业位于法国历史悠久的葡萄产区巴尔山坡Celles-sur-Ource村庄。

上世纪80年代，他从父亲手中继承衣钵，在尊崇家族传统的同时，将个人品味注入祖传配方，创立了自己的品牌：洛琦 DE LOZEY。





天人合一  
不懈追求葡萄园的可持续生态。

SENSITIVITY

*A constant quest for sustainability  
in the vineyards.*

*Champagne De Lozey  
has always taken a highly  
respectful approach to  
terroir and viticulture.*

无论是风土条件还是葡萄栽培，  
洛琦香槟一向秉持万物和谐的理念。

*Two certifications have been obtained:  
High Environmental Value (Haute  
Valeur Environnementale) and  
Sustainable Viticulture in Champagne  
(Viticulture Durable en Champagne).*

已荣获两项认证：  
高环境价值认证，以及可持续葡萄栽培认证。



*This respectful approach is  
applied both in the vineyards  
and in the cellars.*

万物和谐的理念体现于葡萄园和酒庄的每一处细节。



静待流年  
岁月，是陈年佳酿的挚友。

PATIENCE

*Time: a faithful friend to  
the wines as they age.*

*At once artists and artisans,  
Philippe Cheurlin and his team  
compose and craft each cuvée to  
convey the innate spirit of the brand.*

***Most De Lozey champagnes  
are cellared for ten years,  
left to age at their own pace.***

*The house values long ageing  
periods and considers time  
to be its greatest ally.*

菲利普·乔林带领团队，以艺术家的敏锐和匠师的无微不至，精心调配每一款珍酿，意在传递品牌的精髓。

大多数洛琦香槟都会经历10年窖藏，静待时间成全。

酒庄以岁月为佳友，陈酿日久而弥珍。





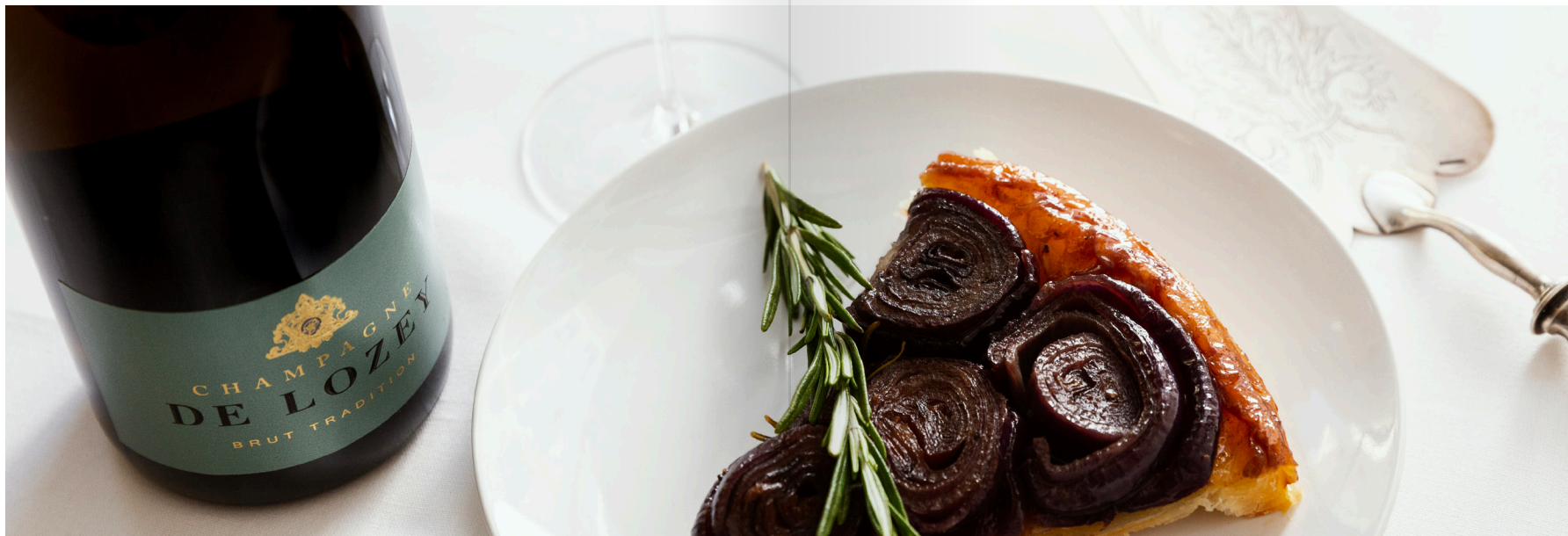




至臻至精  
时光洗练，造就不凡气质。

CONTROL

*Champagnes with character,  
forged over time.*



天然传统香槟 BRUT TRADITION

## 悦谊

绚丽果香，活力充盈，清新适口，历史悠久的经典款香槟。

调配：  
黑皮诺和霞多丽  
20% 15 年索雷拉

### *Friendship*

*Deliciously fruity, lively, refreshing and easy to drink, this time-honoured favourite is the quintessence of champagne.*

### BLEND:

*Pinot Noir and Chardonnay,  
20% 15-year Solera*



白中白香槟 BLANC DE BLANCS

## 雅逸

百分百霞多丽香槟，低调精致的首选。纯粹，无瑕，余韵悠长。

调配：  
100% 霞多丽

### *Charm*

*Our 100% Chardonnay champagne appeals to those who appreciate understated finesse. No frills, just flawless taste and length in the mouth.*

**BLEND:**  
100% Chardonnay



桃红香槟 ROSÉ DE SAIGNÉE

## 烈艳

悉心酿造，馥郁盈盏。浓烈的口感中果香绽放，微妙的色泽难以言喻，不枉一啜。

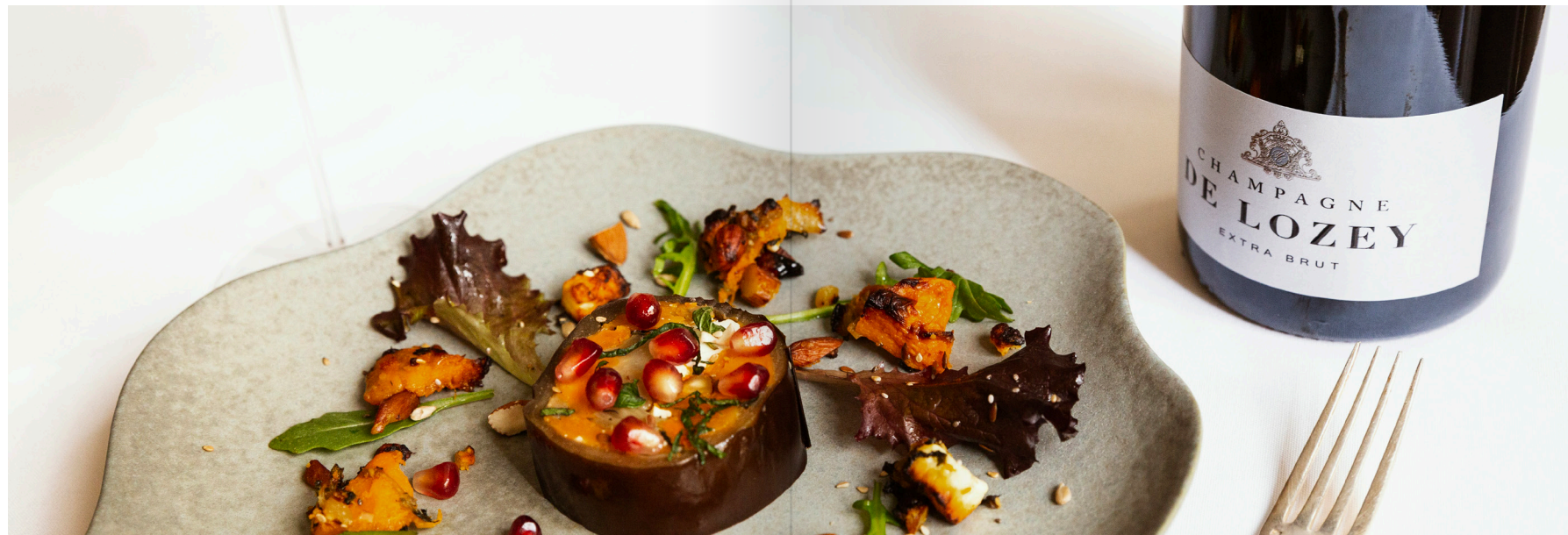
调配：  
100% 黑皮诺

### Sensuality

We work patiently and carefully to craft the intense taste found in every glass. Bold, bursting with fruit and flavour, and yet with a subtle appearance, our rosé is well worth trying.

### BLEND:

100% Pinot Noir



超天然香槟 EXTRA-BRUT

## 本真

刚柔兼济，超凡脱俗却不失练达，最适合与美食一起享用。

调配：  
100% 黑皮诺（老藤）

### *Purity*

*Crafted to be enjoyed with fine food, the juxtaposition of power and delicacy in this original and sophisticated cuvée is astonishing.*

### BLEND:

*100% Pinot Noir (old vines)*



白中白香槟 BLANC DE BLANCS  
天然，木桶陈酿

## 曼魅

木桶中成熟的霞多丽，色泽古朴深邃，口感饱满曼妙。金色的酒体令人一见倾心。闻香丰润逾溢，入口层次丰富，华丽而奢魅。

调配：  
100% 霞多丽

BRUT, BARREL AGED

### Attraction

*This Chardonnay is matured in barrels, which gives it a beautiful patina and an exquisite richness. Its golden colour is irresistible. A rich and expressive nose leads towards magnificent complexity on the palate.*

### BLEND:

*100% Chardonnay*



绅士特酿 CUVÉE DES GENTLEMEN

## 敛睿

集风雅成熟与蓬勃朝气于一身，口感平衡有致的尊享之选。彰显的气质，焕发感官共鸣，蕴藏丰厚谈资。征服老练而挑剔味蕾的极品香槟。

调配：

100% 索雷拉（永久珍藏）  
15 年陈酿年份香槟

### *Subtlety*

*The Cuvée des Gentlemen is a prestigious champagne that strikes an impressive balance between refined maturity and dynamic youth. Its flamboyant character brings the senses to life and invites conversation. The finest champagne for discerning palates.*

### BLEND:

*100% Solera (permanent reserve),  
15 years of vintages*





## 周日香槟 DIMANCHE

### 珍忆

对菲利普而言，本款特酿意义非凡：它沉浸了家族往事，洋溢着童年周日午餐的美好记忆。每一滴，都融汇了葡萄园各处的风土精华，散发出酒庄独有的优雅气度。

调配：

70% 黑皮诺，30% 霞多丽  
30% 珍藏酒

#### Memories

*This is a very personal cuvée for Philippe, because its history is intertwined with that of his family, and his childhood memories of Sunday lunches. It is a blend of all the vineyard parcels, with the house's characteristic elegance expressed in every drop.*

#### BLEND:

*70% Pinot Noir and 30% Chardonnay,  
30% reserve wine*



年份特酿 VINTAGE CUVÉES  
超天然香槟

## 气质

每一年，都焕发新的气质。  
每一年，都述说自己的故事：  
1999, 2002, 2004, 2006, 2008...  
邀您走入它的传说，悦享佳酿。

### *Character*

*Each year, this champagne expresses a different character. Each year, it tells its own story: 1999, 2002, 2004, 2006, 2008... Open and enjoy.*

## 洛琦香槟 | CHAMPAGNE DE LOZEY

地址：72 GRANDE RUE 10110 CELLES-SUR-OURCE, FRANCE

电话：+33 (0)3 25 38 51 34 / 移动电话：+33 (0)6 81 56 40 59

电子邮件：CONTACT@DELOZEY.COM

想了解更多细节吗？也可以在

INSTAGRAM 和FACEBOOK 上找到我们。



CHAMPAGNE  
DE LOZEY

洛琦香槟