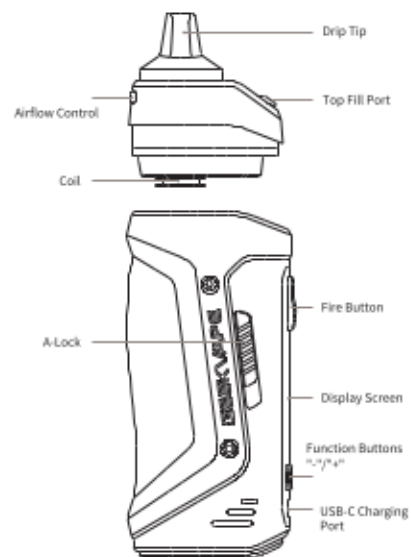


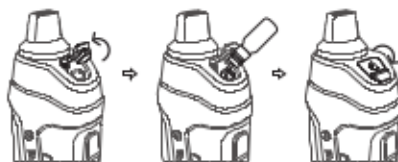
## Thank you for choosing GEEKVAPE

- \* For better user experience, please read the user manual before starting your vape journey.
- \* Please keep the user manual for future reference.

### OVERVIEW



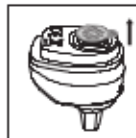
### FILLING THE E-LIQUID



- ▶ Unplug the port.
- ▶ Fill e-juice from the fill port.
- ▶ Plug up the port.

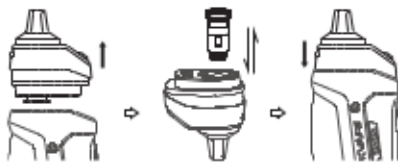
### NOTES:

1. After filling with e-liquid, wait 5 minutes before using.



2. Before use, please tear off the stickers at the bottom of the pod.

### REPLACE THE COIL



- ▶ Take out the cartridge.
- ▶ Replace the coil.
- ▶ Put the cartridge back into place.

### PRODUCT PARAMETERS

- ▶ **Output Power:** 5W-60W
- ▶ **Maximum Output Current:** 20A
- ▶ **Maximum Output Voltage:** 7.5V
- ▶ **Power Display:** Battery icon on the screen
- ▶ **Charging Port:** Type-C Port
- ▶ **Resistance Range of Cartridge:** 0.2 ohm - 2 ohm
- ▶ **Battery Specification:** Built-in 2000mAh battery
- ▶ **Display Screen:** 0.96 inch, TFT color screen
- ▶ **Operating Temperature:** 0°C~45°C
- ▶ **Storage Temperature:** -20°C~60°C
- ▶ **Relative Humidity:** 10%RH~70%RH
- ▶ **Cooling Mode:** Natural cooling

### INSTRUCTIONS

#### 1. Starting Up:

- ① Press the FIRE button 25 for 5 times, and the standby interface will be displayed after the boot animation. The total time is 3S.
- ② If the battery voltage under non-smoking condition is lower than 2.8V, it will automatically shut down, and the startup operation is invalid at this time; it is necessary to plug in USB to charge the battery until the battery voltage is greater than 3.2V before restarting the battery manually.

#### 2. Power Off:

- ① Press the FIRE button 25 for 5 times to display the screen after the shutdown animation, and the total time is 3S.

#### 3. Power Regulation:

- ① Click "+" or "-" to adjust the power, step 0.5W/5-60W cycle.
- ② Long press the button to enter the quick adjustment mode, and step 1W.
- ③ Non-output state displays the set value, and the output power is displayed in real time during the output process.
- ④ The default output power (factory setting) is 5W.

#### 4. Enter Settings:

- ① Press the FIRE key 25 for 3 times to enter the setting state, and the cursor stays at the mode title character, that is, the theme color will be displayed.
- ② The setting state is not entered, and the mode title character and parameter character are shown in white.

- ③ The setting state is not entered, and the mode title character and parameter character are shown in white.
- ④ The default output power (factory setting) is 5W.

#### 5. Exit Settings:

- ① Long press the FIRE key 0.8s to confirm the change and exit the setting state (it will exit automatically after 5S non-operation under the setting state).

#### 6. Switch Working Mode:

- ① Press the FIRE key 25 for 3 times to enter the setting state.
- ② The cursor stays at the mode mark on the screen, that is, the mode character is displayed as the theme color. Press "+" or "-" to switch working mode.
- ③ Optional modes include: SMART- POWER- BOOST- TC-NI- TC-TI- TC-SS- TC-TCR- VPC.

#### 7. Number Of Smoking Mouth Reset And Restore:

- ① Press the FIRE key 25 for 3 times to enter the setting state.
- ② Press the Fire key to switch the cursor and stay in the Puff display bar.
- ③ Press "+" to clear the number of puffs, press "-" to restore the number of puffs.

#### 8. Lock Function:

- ① Ticking the lock switch up and down opens and closes the lock function, indicating the LOCKED/UNLOCKED interface for 2 seconds.
- ② When the lock function is turned on, output is stopped, and other operations are invalid except on/off.
- ③ Turn on the lock function and press the button to prompt the lock interface for 2 seconds under the boot state.
- ④ Atomizer resistance <=0.08ohm output short circuit prompt 2 seconds.
- ⑤ No nebulizer or nebulizer resistance >=2.0ohm, no nebulizer prompt 2 seconds.
- ⑥ Before output voltage of single battery <3.2V before output or >2.8V in output stop output, low voltage prompt 2 seconds.
- ⑦ Motherboard temperature >65°C before output or >85°C in output, equipment overheating prompt 2 seconds.
- ⑧ Smoke more than 10s in a single time, stop the output, timeout prompt 2 seconds.
- ⑨ In the locked state, "+" and "-" keys are used to adjust parameters. Press the lock screen prompt for 2 seconds.

#### 9. Atomizer Identification:

- ① In the standby interface, it will monitor whether the atomizer is changed and update the latest atomizer resistance value.
- ② When a new atomizer is inserted, the screen jumps to the new atomizer prompt interface, which prompts the user with the new atomizer resistance value.
- ③ Click the "+" key or the "-" key to confirm.
- ④ When the original atomizer is removed, the atomizer resistance value will automatically reset to zero.

#### 10. Version Information Display:

- ① Press the FIRE button for 5 times and then press 25 with the "+" and "-" keys at the same time. The

current hardware version number will be displayed on the screen.

#### 11. Factory Data Reset:

- ① After entering the version information interface, press 25 with the three keys "FIRE" and "+" and "-" to display the interface for restoring factory Settings.

#### 12. Stealth Mode:

- ① To go into Stealth mode, press the Fire and "+" and "-" keys for 2 seconds.
- ② Do the same to exit Stealth mode.

#### 13. Switching Display Style:

- ① In Settings mode, hold down the "+" and "-" keys simultaneously for 1 second to switch to the next theme.

#### 14. Screen Brightness Adjustment:

- ① In the standby interface, hold down the Fire button and "+" button for 1 second to display the brightness adjustment icon and step up the brightness by percentage. Hold down the Fire button and "-" button to dim the brightness of the screen.

### ATTENTION

- \* This product is not intended for pregnant women and those who are under the age of 21.
- \* Keep away from fire or extreme heat.
- \* Avoid impact.

### CUSTOMER SERVICE

Main Page: [www.geekvape.com](http://www.geekvape.com)  
Address: T/F, No.3 West Block, Laobing Mansion,  
Xingye Road No.3012, Bao'an District,  
Shenzhen, Guangdong Province, China P.R.  
518902

Phone: (001)866-985-6876  
Email: [support@geekvape.com](mailto:support@geekvape.com)  
Available Time: 24/7

### ANTI-COUNTERFEITING CHECK

- ① Go to [www.geekvape.com](http://www.geekvape.com) and find PRODUCT VERIFICATION at the bottom of the main page.



- ② Scratch the code bar under the label on the box and enter the 12-digit security number in the blank on the webpage.



- ③ Click 'Go' and a pop-up window shall appear confirming if your product is authentically made.

