

DERMATHOD
더 마 소 드

Skincare method, Skincare with distinctive met

The new method to solve skin problems

DERMATHOD DERMA EZ JET

HOME USE





DERMA EZ JET & Multi Effector Ampoule

SCIENTIFIC & SMART way to increase skin absorption of cosmetic active ingredients

DERMA EZ JET is an Ampoule-integrated sterilized MTS for single-use that powerfully rebuilds the loosen skin, also a fine skin stimulator with an ampoule that visibly ameliorates the skin by readily delivering premium nourishment in depth without sitting around on your skin.

- Fine skin stimulator much less pain**
- Single-use for hygienic and safe treatment**
- Easy and fast to operate**
- Prompt improvement in the skin**

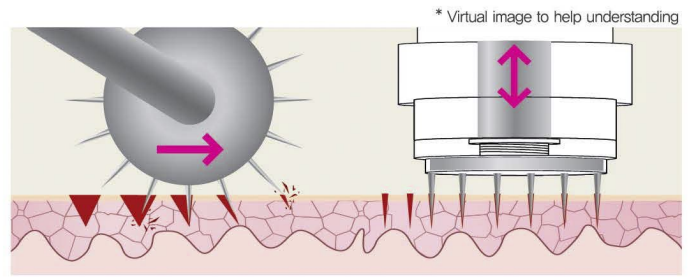
Material of needle	FDA approved medical grade acrylic Advanced injection technology		
Length of needle	0.25mm	Number of needle	32 micro needles
Thickness of needle	34 Gauge(The bigger figure of Gauge unit has, the thinner the needle is)		
Package	Individually sterilized package by EO Gas Sterile		
Content	EFG Multi Effector Ampoule 4ml		



DERMATHOD DERMA EZ JET Multi Effector Ampoule_ 4ml * 4ea x 2BOX

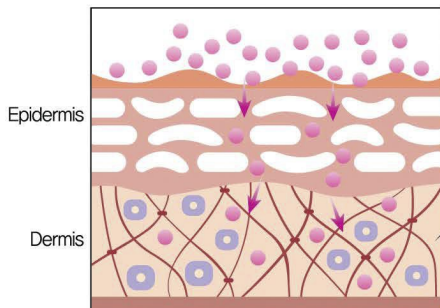
Compared with roller type, DERMA EZ JET has few advantages,

- Vertical movement for easy penetration preventing needle bent and broken
- Much less pain and trauma
- Ampoule-integrated sterilized MTS – Easy to operate concentrated areas
- Cost saving



* This product is an esthetic device that assists skin absorption of cosmetics, not a medical device.

The core of young and healthy skin - Grasp **DERMIS!**



Hyaluronic Acid

The Hyaluronic Acid helps moisturizing substance in the skin to supply moisture and nutrients needed for cell regeneration, and fill up the space of collagen and elastin as well as maintain the skin elasticity and moisture.

Collagen

Collagen is the most abundant protein in our bodies, is responsible for providing the structure to our skin. Around 80% of the dermis is composed of collagen, which is responsible for skin elasticity and moisturizing and acts as a pillar of skin.

Elastin

It is in connective tissue in the dermis with collagen and is involved in the flexibility and elasticity of skin tissue. It supports the collagen pillars and maintains skin elasticity.

DERMATHOD Multi Effector Ampoule is a target to stimulate the dermis that is contained premium ingredients for the recovery of **Hyaluronic Acid, Collagen, and Elastin** which are the core of skin health.

Confidence in ingredients help real recover skin



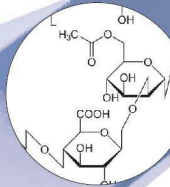
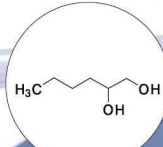
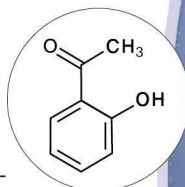
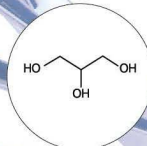
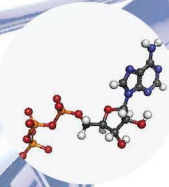
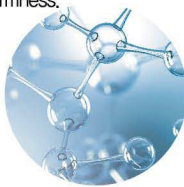
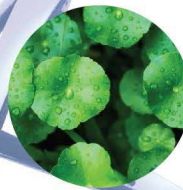
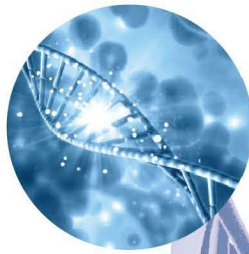
rh-Oligopeptide-1(EGF)

Epidermal Growth Factors are a family of several proteins naturally present in the body. They are a key component of the cell growth and regeneration process. EGF considerably increase skin cell regeneration. More precisely, they will directly communicate to the skin cells to produce more collagen and elastin. Currently, it is the most powerful known active ingredient to induce such stimulation effect. This is why, EGF treatments can reverse ageing signs and restore collagen to levels only observed in young persons.

*EGF supplementation is essential as the skin ages.

· The maximum concentration to blend limit for cosmetics in Korea-EGF 10ppm

· 10ppm, 10%-EGF BOMB!!
(concentration) (content)



EWG Green Level

미국 비영리 환경단체인 EWG(Environmental Working Group)에서 제공하는 화장품 성분 안전성 평가.

EGF 안전성 등급 평가 기준



안전 등급
LOW HAZARD



주의요망등급
MODERATE HAZARD



주의등급
HIGH HAZARD

1 Fish Collagen Peptide 100%

In order to fill the collagen that occupies most of the dermis, Nano-sized Fish Collagen will promote skin elasticity and keep it moist.

1 Centella Asiatica Extract

Centella Asiatica really does have benefits for skin, thanks to its active compounds, including Madecassoside, which serves as an antioxidant, also has been shown to have potent anti-oxidant properties and to be a rich source of amino acids, and it's a good hydrating ingredient to soothe upset or compromised skin.

1 Niacinamide (Vitamin B3)

Niacinamide is a form of vitamin B3 commonly used in skin-care products, It has proved to be an excellent treatment for pigmentation, age spots and melasma. Also helps calm inflammation and supports healthy collagen production. It's okay to use for all skin types, including those with very sensitive complexions.

2 Glycerin

Vegetable based natural glycerin is perfectly safe and even beneficial to the skin. Vegetable based is usually considered of food grade quality. Glycerin is a humectant that helps pull in moisture from the surrounding environment to moisturize the skin.

1 1,2-Hexanediol

It is ideal for use as an emollient, humectant, and wetting agent in cosmetic and skin care products. It can be used as an alternative to parabens or other preservatives that may be undesirable.

1 Xanthan Gum

Xanthan Gum is used as an emulsion stabilizer, emulsifying surfactant, as well as a viscosity increasing agent in cosmetics and improve shelf life and help with the stabilization of a product. It is also to have skin-conditioning properties. FDA approved.

1 Camellia Sinensis Leaf Water (Green tea extract water)

The best quality hydrosol obtained by vapor distillation of green tea leaves. It is one of Botanical ingredient, that is a powerful skin antioxidant, has anti-inflammatory powers, can repair DNA damaged by UV radiation, can protect the skin from UVB radiation, and reduce water loss through the epidermis. Especially the Vitamin C in green tea improves skin firmness.

1 Sodium Hyaluronate (Hyaluronic Acid)

Sodium Hyaluronate is a safe and effective moisturizer and has the ability to bind and hold onto significant amounts of water. It is naturally found in the dermis of the skin, products that contain Sodium Hyaluronate helps to replace hyaluronic acid lost as a result of the natural skin aging process and sun exposure.

1 Adenosine

Adenosine has proven anti-wrinkle benefits due to its ability to energize the skin's surface so it looks smoother and younger. Naturally present throughout the body, adenosine is a beneficial ingredient all skin types can use.

1 Hydroxyacetophenone

It is a clean, safe, lab-synthesized, nature-identical compound that provides proven multifunctional benefits including anti-irritant and antioxidant support on top of its preservative-boosting effect.

DERMA EZ JET MECHANISM

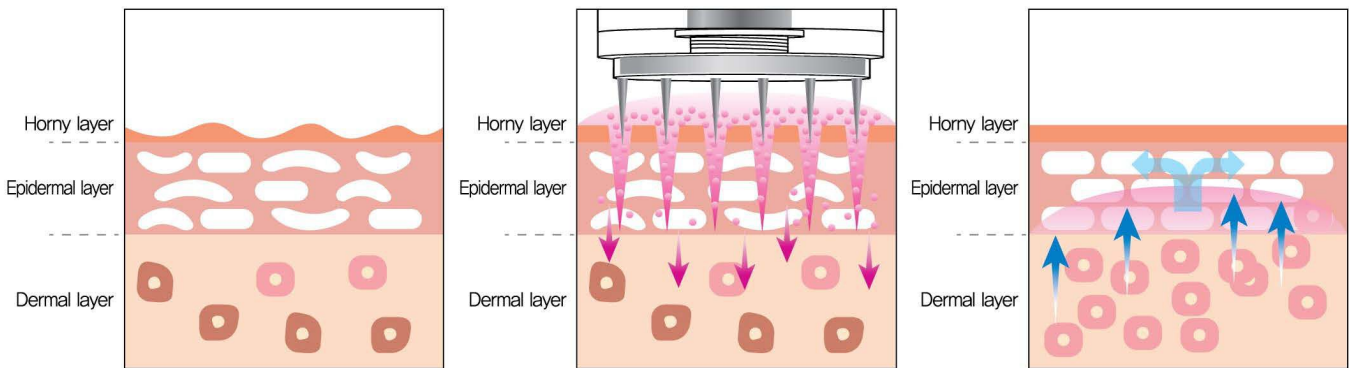
DERMATHOD High-Tech Multi Delivery System

DERMATHOD 'High-tech Multi Delivery System' is diversifying the skin delivery method of cosmetic for growth of the skin cells, based on the skin's regeneration mechanism. It helps increase the penetration of transdermal delivery and the active ingredient is absorbed stably to promote the differentiation.

1 STEP Deliver stimulation to the epidermis

Microneedling involves using fine needles to create hundreds of tiny, invisible puncture wounds in the top layer of skin, and directly deliver the ampoule through the punctures at the same time.

The micro-injuries you create stimulates the body's natural wound healing processes, resulting in cell turnover and increased collagen and elastin production, therefore reversing as well as preventing signs of aging.

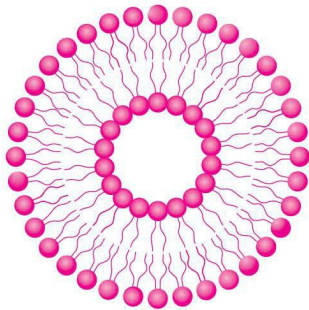


Stimulation(micro-injury) → Derive blood circulation → Oxygen supply to cells → Nutrition supply → Cell regeneration(Collagen, Elastin)
 → Rearrangement of the dermis structure → Soothing → Promoting the metabolism of keratin → Regenerating epidermis → Skin recovery

2 STEP Liposome Nano-Capsule

Liposome with the best skin cell penetration and absorption capability of the ampoule.

It comes with an enhanced capability to penetrate smoothly even into previously uncharted terrains of the keratin layer. Thereby offering sensational penetration even in troubled and problem skins.



Liposome for Stabilization & Penetration

Liposome is a commonly used Delivery vehicle in dermal applications as protective systems for active ingredients.

The membrane of liposome is composed of lipid bilayer, which is very similar to human skin, it is very compatible with the skin and penetrates skin layers easily.

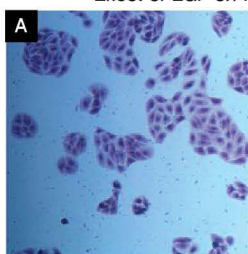
3 STEP EGF 10ppm, 10%

Containing liposomized EGF(10ppm), 10% helps strengthen the skin barrier and prevents skin damage.

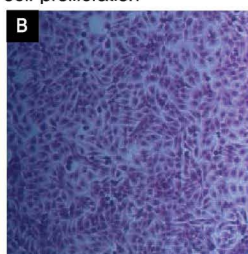
Also, it helps to regenerate skin by delivering active ingredients closer to real skin.

In addition, Nano-sized Collagen Peptides increase the density and resilience of inner skin.

Effect of EGF on HaCaT cell proliferation

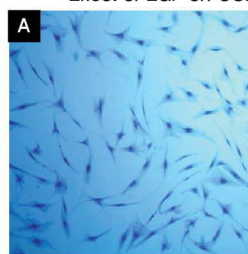


non-treatment

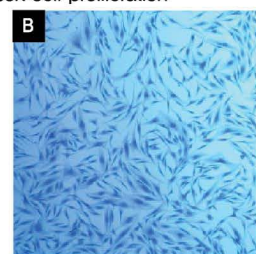


treated with 10ppm concentration EGF

Effect of EGF on CCD-986sk cell proliferation



non-treatment



treated with 0.1ppm concentration EGF



Derma Revive Triple Action Mask

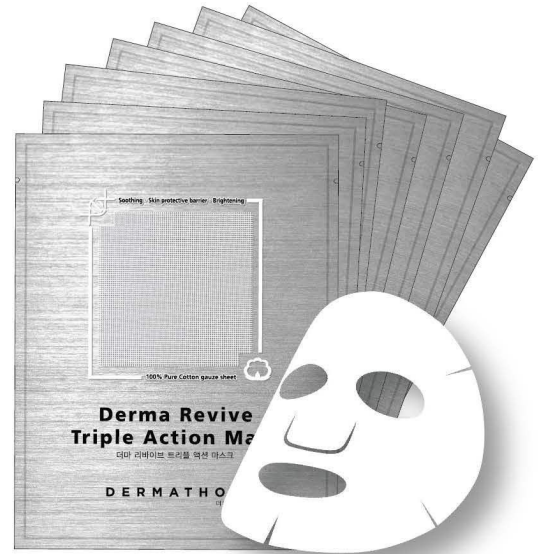
Derma Revive Triple Action Mask contains three kinds of special ingredients which are the triple actions for irritated skin that help skin sooth, protect, brightening and make it healthy.

It gives your skin the ultimate hydration and immediate soothing care against redness, sunburn, and irritations by instant cooling affect.

Feel the definitely a new experience.

Non-Sticky / Non-Sweaty

- ✓ Skin Irritation Test Completed
- ✓ Extra Sheet



DERMATHOD Derma Revive Triple Action Mask_30ml x 8ea

Action 1



Soothing
By Alaska Glacial Water

Action 2



Barrier reinforcement,
Moisture protective
By AMINO-CERA1.5

Action 3



Brightening
By NEUROLIGHT.61G



100% Pure Cotton gauze sheet

*100% pure cotton gauze sheet is woven Cross-Hole type which helps deliver into the skin the rich essences that laid tightly between the crossed holes.

Also, it is not disturbing skin breathe to help prompt release heat from the surface after DERMA EZ JET, MTS, Peeling, IPL, and Laser.



DERMATHOD
DERMA LEVEL 345
RATOXIN Ampoule

ONLY FOR PROFESSIONAL



It's ANOTHER LEVEL

더마 레벨 345 DERMA LEVEL 345

DERMA LEVEL 345

is a sterile, disposable ampoule-integrated adjustable microneedle stimulator that maximizes the absorption of the ampoule by creating fine channels into the skin. The length of the needles can be adjusted in three levels for use depending on various concerns and thickness of the skin. It is a Microneedle Therapy System that allows for quick delivery of effective ingredients of the ampoule into the skin. It is suitable for professional skincare to offer individually customized programs through the patented three-levels needle length control function, for various skin concerns of clients. Material of needle is approved by FDA that made of medical-grade acryl and it prevents metal allergies, safer and more sterile compare with metal needles.

- Safe, sterile, disposable ampoule-integrated adjustable microneedle stimulator
- Sterilized disposable device fully hygienic by EO gas
- Convenience - Ampoule is filled in airless (vacuum) container for simultaneous skin stimulation and ampoule dispense
- Customized skincare with 3-stage adjustable levels for several skin concerns and areas
 - LEVEL I : For skin glowing and moisturizing
 - LEVEL II : Also for pore tightening and silky texture
 - LEVEL III : Also for serious skin concerns and trouble areas
- Number of Needles - 32
- Thickness of Needle - 34 Gauge

* This product is a skin stimulator, not a medical device.
 * DERMA LEVEL 345 enables hygienic and safe treatment by sterilizing product in individual package.

DERMA LEVEL 345

Point Tip!

Recommended adjusting the needle length to the level I, II, and III by client's skin concerns, pains, and thickness of the Skin.

Forehead ●
Area with thin surface volume
- recommended LEVEL I

Around eye ●
Around the Orbicular muscle is the thinnest at 0.04mm
- recommended LEVEL I (do not apply on eyelids)

Bridge and sides of nose ●
recommended LEVEL I ~ II
* Blackheads - recommended LEVEL III

Chin, cheeks ●
LEVEL I ~ II sensitive skin - general skin /
LEVEL III pigmentation, oily skin, skin troubles



DERMA LEVEL 345 LATOXIN Ampoule 4ml*8ea

The CENTEL-LAPOSOME™ is Callus extracted from Centella Asiatica (plant-derived Exosome) which is a unique ingredient of DERMATHOD, helps recover stimulated skin to strengthen the base of skin and essential peptide complex for skin volume and resilience improvement makes skin smooth, and lustrous while recovering health.



Main Ingredients

* CENTEL-LAPOSOME™

Recovery wound that extracted from Centella Asiatica Callus (plant-derived Exosome).

* SYN-AKE

It is designed to mimic the action of snake venom that helps to reduce the appearance of fine lines and wrinkles.

* sh-Oligopeptide-1

EGF helps to build up skin cells and essentially strengthening the skin barrier and plumpy from increasing collagen.

* Acetyl Octapeptide-3

Influences the muscle contraction process that results in a more relaxed and line-free face, especially around the forehead and the eyes.

* Acetyl Hexapeptide-8

From a protein found in Botox. It's primarily used as an active ingredient in anti-wrinkle and anti-aging.

* Aluminum Sucrose Octasulfate

It helps to promote tissue growth and repair to treat skin burns.

* Sodium DNA

PDRN increases the metabolic activity of cells in the skin and it activates tired and damaged skin cells to act younger and get to work again.

* Sodium Hyaluronate

It helps to restore the skin's moisture, promoting a more revitalized and youthful complexion.

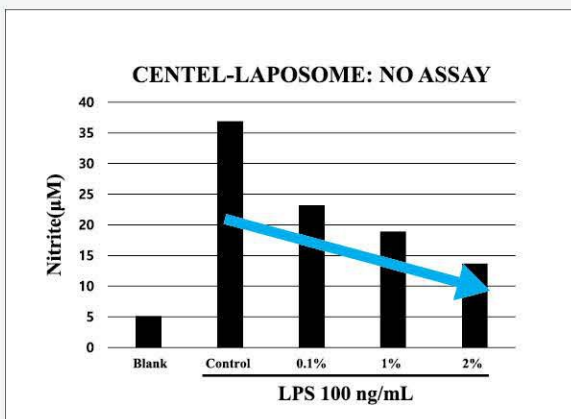
What is CENTEL-LAPOSOME™ ? (Centella Asiatica callus extracellular cell)

Sterile cultured plant cell mass callus containing nutrients is developed by extracting and separating parts of Centella Asiatica. Because it develops in wounded areas of the plant, more defense factors and effective ingredients are secreted in order to recover.

CENTEL-LAPOSOME

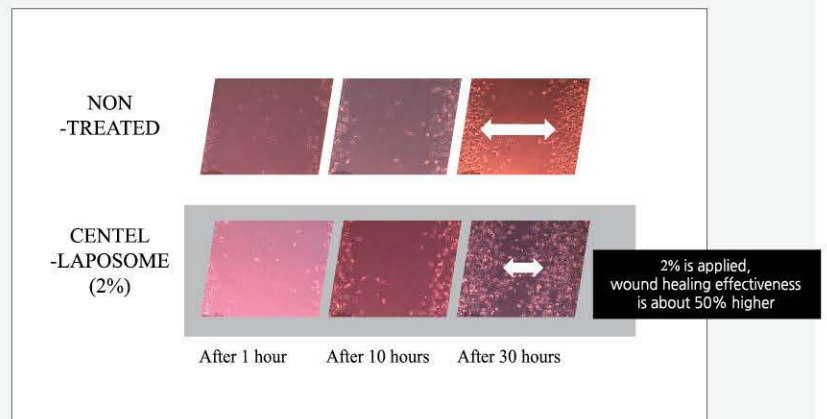
- Skin recovery activity -

| CENTEL-LAPOSOME (2%) is applied, 63% reduction in inflammation



※ Shows effective inflammation suppressing effects

| CENTEL-LAPOSOME (2%) is applied, wound healing effectiveness is about 50% higher



※ Shows effective wound healing ability

DERMATHOD
DERMA LEVEL 345
RADIANCE Ampoule

ONLY FOR PROFESSIONAL



DERMA LEVEL 345 Radiance Ampoule 4ml*8ea

Through fine stimulation by the micro-needling which induces self-activation of skin, representative EGF(10ppm x 10%) formula of DERMATHOD improves skin functions, and TRIPLE MELA COMPLEX consisting of tranexamic acid, HEPES, and Niacinamide suppresses the creation of melanin which causes pigmentation and focuses on effectively caring for blemishes and melanin both in the upper and lower layer of skin.



Main Ingredients

* sh-Oligopeptide-1(10ppm x 10%)

Epidermal Growth Factors are a family of several proteins naturally present in the body. They are a key component of the cell growth and regeneration process. EGF considerably increases skin cell regeneration. More precisely, they will directly communicate to the skin cells to produce more collagen and elastin. This is why EGF treatments can reverse aging signs and restore collagen to levels only observed in young persons.

Especially, EGF supplementation is essential as the skin ages.

10ppm EGF is the maximum concentration to blend limit in cosmetics by KFDA

* Camellia Sinensis Hydrosol

The best quality hydrosol obtained by vapor distillation of green tea leaves.

It is one of Botanical ingredient, that is a powerful skin antioxidant, has anti-inflammatory powers, can repair DNA damaged by UV radiation, can protect the skin from UVB radiation, and reduce water loss through the epidermis. Especially the Vitamin C in green tea improves skin firmness.

* HydroxyEthylPiperazine Ethane Sulfonic Acid

HEPES activates natural enzymes in the skin that help break the bonds that bind dead skin cells to the surface, resulting in exfoliation of the skin looking bright, firm, and youthful.

* Tranexamic Acid

For melasma (dark spots) treatment, including pregnancy melasma and post-inflammatory hyperpigmentation, also safe to use for all skin types and colors.

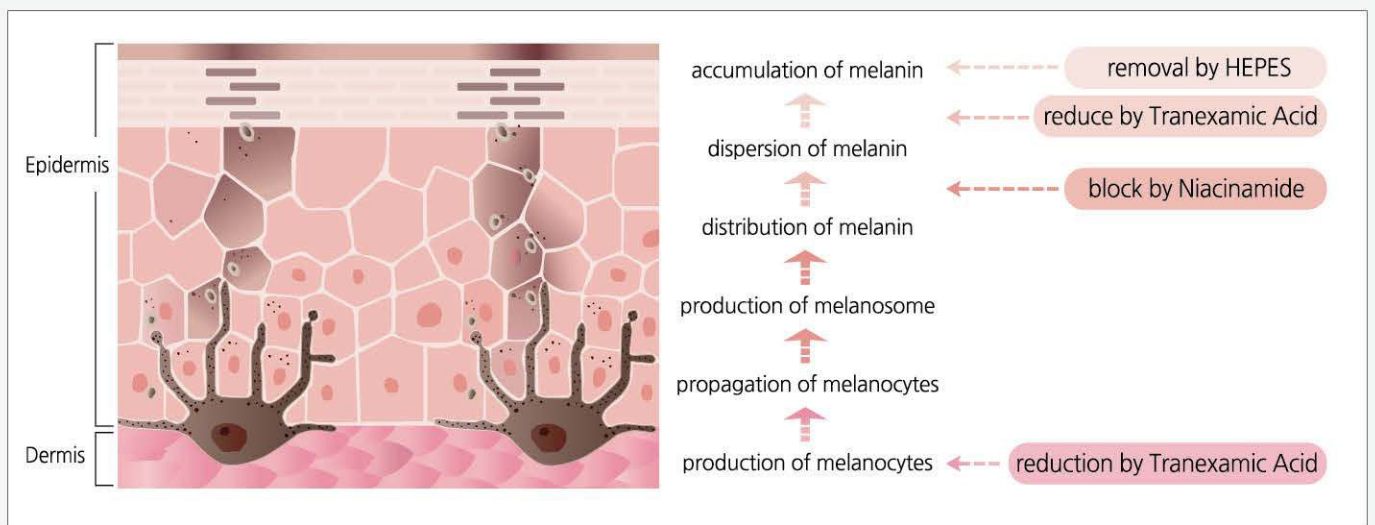
* Sodium Hyaluronate(Hyaluronic Acid)

Sodium Hyaluronate is a safe and effective moisturizer and has the ability to bind and hold onto significant amounts of water. It is naturally found in the dermis of the skin, and it helps to replace hyaluronic acid lost as a result of the natural skin aging process and sun exposure.

MELA CONTROL SYSTEM

The TRIPLE MELA COMPLEX consisting of Tranexamic acid, HEPES, and Niacinamide suppresses creation of melanin which causes pigmentation and cares for blemishes on skin's surface for focused care of melanin both in the upper and lower layer of skin.

MELA CONTROL SYSTEM



※ The characteristics of raw materials



EGF Multi Effector Ampoule 8ml*6ea

Multi Effector Ampoule contains 10% EGF that liposomal formulation for 10ppm concentration. It strengthens skin barrier and prevents skin damage by containing liposomized EGF(10ppm) and collagen peptides increase the density and resilience of inner skin. It also reconditions the skin with optimal ingredients such as Centella Asiatica extract and Green tea hydrosol(extract), which enhance complexion and strengthen skin barrier as a substitute for purified water.

The ideal skin as desired will be provided throughout fundamental adjustment targeted by expert's skill and premium nourishment.

- Strengthens moisturizing barrier
- Re-texturizes the skin
- Increases resilience
- Anti-wrinkle & Brightening functionality
- Enhances dullness

Main Ingredients

sh-Oligopeptide-1(EGF 10ppm*10%), Centella Asiatica Extract, Camellia Sinensis Leaf Water, Sodium Hyaluronate (Hyaluronic Acid), Niacinamide(Vitamin B3), Collagen Peptide, Adenosine

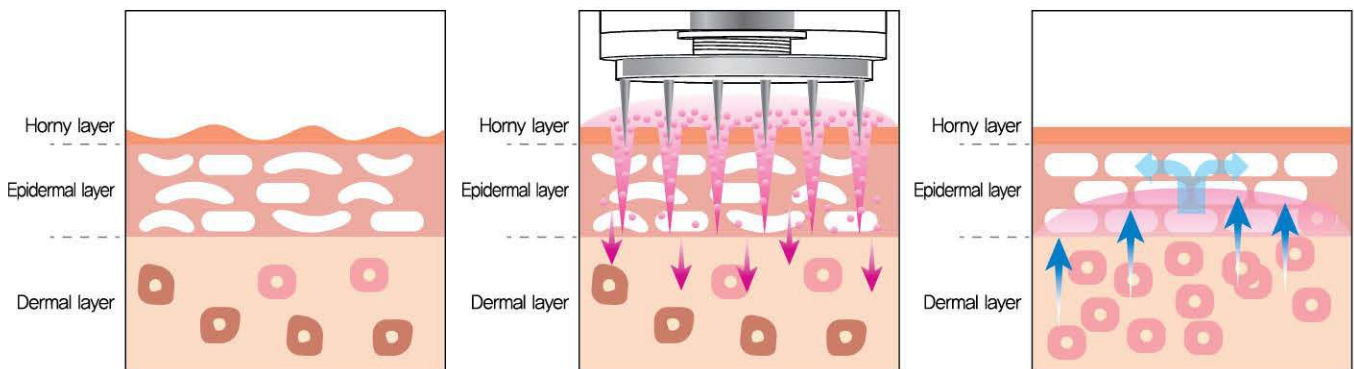
MECHANISM of DERMATHOD High-Tech Multi Delivery System

DERMATHOD 'High-tech Multi Delivery System' is diversifying the skin delivery method of cosmetic for growth of the skin cells, based on the skin's regeneration mechanism.

It helps increase the penetration of transdermal delivery and the active ingredient is absorbed stably to promote the differentiation.

1 STEP Deliver stimulation to the epidermis

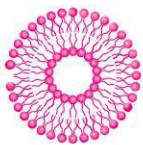
Microneedling involves using fine needles to create hundreds of tiny, invisible puncture wounds in the top layer of skin, and directly deliver the ampoule through the punctures at the same time. The micro-injuries you create stimulates the body's natural wound healing processes, resulting in cell turnover and increased collagen and elastin production, therefore reversing as well as preventing signs of aging.



Stimulation(micro-injury) → Derive blood circulation → Oxygen supply to cells → Nutrition supply → Cell regeneration(Collagen, Elastin)
 → Rearrangement of the dermis structure → Soothing → Promoting the metabolism of keratin → Regenerating epidermis → Skin recovery

2 STEP Liposome Nano-Capsule

Liposome with the best skin cell penetration and absorption capability of the ampoule. It comes with an enhanced capability to penetrate smoothly even into previously uncharted terrains of the keratin layer. Thereby offering sensational penetration even in troubled and problem skins.



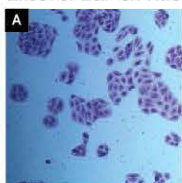
Liposome for Stabilization & Penetration

Liposome is a commonly used Delivery vehicle in dermal applications as protective systems for active ingredients. The membrane of liposome is composed of lipid bilayer, which is very similar to human skin, it is very compatible with the skin and penetrates skin layers easily.

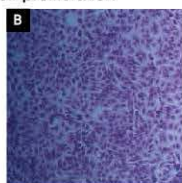
3 STEP EGF 10ppm, 10%

Containing liposomized EGF(10ppm), 10% helps strengthen the skin barrier and prevents skin damage. Also, it helps to regenerate skin by delivering active ingredients closer to real skin. In addition, Nano-sized Collagen Peptides increase the density and resilience of inner skin.

Effect of EGF on HaCaT cell proliferation



non-treatment

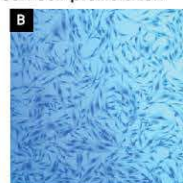


treated with 10ppm concentration EGF

Effect of EGF on CCD-986sk cell proliferation



non-treatment



treated with 0.1ppm concentration EGF

※ The characteristics of raw materials



Derma Priming Peel Booster 3ml*30ea [Peel Pad]

Derma Priming Peel Booster gradually releases a 10% concentration of Gluconolactone(PHA) and Capryloyl Salicylic Acid(LHA) overnight, so you get them that truly doesn't stop working, which is one of the most reliable ingredients in terms of exfoliation and brightening.

The benefits of PHA & LHA help remove dead cells(exfoliating) that accumulate on the skin's surface and give a dull appearance, as well as deep-clean clogged pores, speed up cell turnover, and promote healthy collagen production.

So skin does not feel irritated after all of the heavy-duty exfoliation while Witch Hazel Extract calms all irritation.

Also, the Glutathione has been proven effective to lighten even skin tone, reduce hyperpigmentation, freckles, age spots, acne scars, and dark patches when applied topically, which means 'Derma Priming Peel Booster' will give the best glow face EVER!

Main Ingredients

- * PHA(Polyhydroxy Acid) Enhance exfoliation and normalise skin thickness
- * LHA(Lipohydroxy Acid) Improve skin clarity
- * **Glutathione** Reduce hyperpigmentation, brightening
- * **Witch Hazel Extract** Calms all irritation, protect barriers Cinnamomum
- * **Cassia Bark Extract** Reduce hyperpigmentation and plumping on fine
- * **Pore Clear Complex**
Diospyros Kaki Fruit Extract / Grape Extract / Chestnut Shell Extract / Camellia Sinensis Leaf Extract : help maintain skin moisturizing and vitality

One Pad is enough, it's powerful!

Tip: Durable double-side. Start with the textured Embossing side

(STEP 1) to get deep into your pores and buff away dead skin cells and blackheads before switching over to the Cotton Gauze side.

(STEP 2) to smooth everything out and make finally glass skin.

POINT 1 Never pain

POINT 2 Gentle chemical exfoliants

POINT 3 Prevents formation of acne

POINT 4 Easy to peel off

POINT 5 Individual packet for a single time use & hygiene




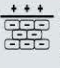

Derma Revive Triple Action Mask 30g*8ea

Derma Revive Triple Action Mask contains three kinds of special ingredients which are the triple actions for irritated skin that help skin smooth, protect, brighten and make it healthy. It gives your skin the ultimate hydration and immediate soothing care against redness, sunburn, and irritations by the instant cooling effect.

+ Extra Sheet

Put the Extra Sheet on any spot area that you desire for intensive care.
Ex) neck / chin / cheek / forehead / after waxing

Feel the definitely a new experience. Non-Sticky / Non-Sweaty

<p>Action 1</p>  <p>Soothing by Alaska Glacial Water</p>	<p>Action 2</p>  <p>Barrier reinforcement, Moisture protection by AMINO-CERA1.5</p>	<p>Action 3</p>  <p>Brightening by NEUROLIGHT.61G</p>
---	--	--



100% Pure Cotton gauze sheet

100% pure cotton gauze is woven Cross-Hole type which helps deliver into the skin the rich essences that laid tightly between the crossed holes. Also, it is not disturbing skin breathe to help prompt release of heat from the surface after MTS(Micro-needling), Peeling, IPL, and laser treatment.

Main Ingredients

* Alaska Glacial Water

Mineral-rich glacial water from Alaska and powerful hydrating hyaluronic acid turn dry and rough skin into healthy skin fully hydrated by supplying enough moist to the skin.
Also, intensive calming effect helps your sensitive skin to look healthy and illuminated.

* Amino Cera 1.5

Amino Cera 1.5 is a nano-emulsified component of Ceramide & PS-203R.
Ceramides help hold the skin together by forming a protective layer that limits moisture loss and protects against visible damage from other environmental stressors and pollutions.
Amino Cera 1.5 maximizes the effectiveness of ceramide and tightly fills the skin lipid barrier.

* Sea Daffodil Extract (NEUROLIGHT.61G)

NEUROLIGHT.61G is known as Sea Daffodil or Sand Lily.
NEUROLIGHT.61G works to reduce dark spots and pigmentations.
It is skin-related properties include reducing the impact of cellular stress molecules and inhibiting intracellular melanin synthesis, which significantly clarify the pigmentation.

* Centella Asiatica Extract

Research results, The Cica is excellent at healing small wounds, scars and irritation (e.g. burns, psoriasis, blemishes).
Cica's high antioxidant level is also noteworthy - this combined with its ability to promote the synthesis of collagen makes it a superstar anti-aging as well as an excellent ingredient for sensitive, irritated, blemish-prone skin.



Ami-Sterol Cream 60g

17 kinds of Amino acid complexes and active ingredients help quickly soothe the weakened skin due to various stimulations, also provide skin moisture and nutrition to improve wrinkles, elasticity, and skin glowy.

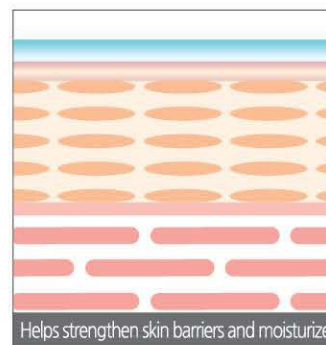
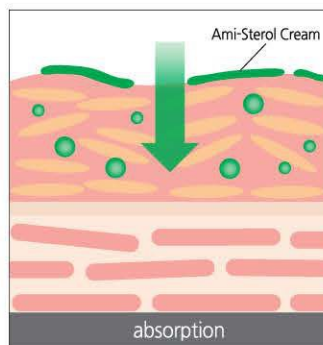
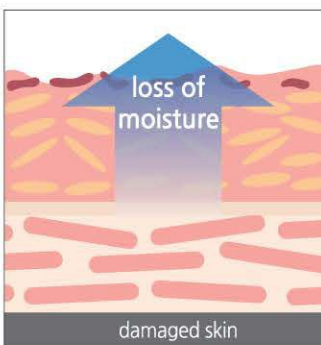
Ami-Sterol Cream was developed as an optimal recovery cream that will quickly protect the skin after skin treatment such as MTS, Laser, Peel off.
It protects the skin by filling the gaps in the skin and the moisturizing function that has collapsed in the skin.

Main Ingredients

- * Vegetable Squalane moisture evaporation prevention/skin protective film
- * Panthenol improve skin moisturizing
- * Cholesterol Strengthening skin barriers
- * 17 kinds of Amino acid complexes deliver energy to the skin
- * and Ceramide NP

Instantly, the active ingredients fill the skin, soothing the skin and creating a natural skin glow.

Skin Repair : Skin Barrier & Hydrate troubled Skin



※ The characteristics of raw materials



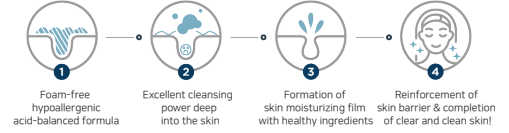
Skin Irritation Test Completed 39.DRCG.78 / 500ml

Derma Revive Cleansing Gel

It is a gel-type cleanser full of moisturizing and removes makeup and waste completely without irritating the skin. It's a hypo-allergenic, acid balanced gel cleanser that doesn't break down the barrier even after cleansing and keeps your skin moisturized. Contains soothing ingredients such as Pine leaves, Bamboo, and Cypress water, and moisturizing factors are formed to maintain moisture balance.

Main Ingredients | Bambusa Vulgaris Extract, Hippophae Rhamnoides Fruit Extract, Calendula Officinalis Extract, Pine Leaf Extract, Cypress Oil, White Willow Bark Extract

A nourishing cleanser made with healthy ingredients to soothe, moisturize, and strengthen the skin barrier



Tips for use | **Take an appropriate amount and spread evenly on dry skin.**
For Sensitive skin: rub and then wash off with lukewarm water.
For Normal skin: rub and wipe off with a sponge or cotton pad, and rinse thoroughly with lukewarm water.



Dermatologist tested on sensitive skin 23.5.DSSP.39 / 50ml

Derma Saver Sun Protection [Anti-wrinkles, Brightening, and UV protection]

Centella Asiatica Leaf Water is based instead of purified water, and it is a hypoallergenic sunscreen that contains specially selected ingredients (Green Tea Extract, Centella Asiatica Extract, Aloe Vera Leaf Extract) for sensitive and dry skin, providing a mild feeling even for sensitive skin. An excellent UV sunscreen to protect irritated skin.

Broad Spectrum SPF 50+ PA+++

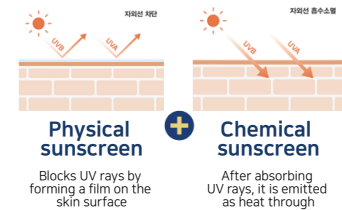
* Dermatologist tested on sensitive skin
 * Perfect Hybrid Sunscreen with golden ratio 3:7 (physical: chemical) for sensitive skin / Non-chalky / Non-eye burning / Smooth / Hydrating / Non sticky & greasy

Main Ingredients | Six types of CICA-derived extracts (Centella Leaf Water, Asiaticoside, Asiatic Acid, Centella Asiatica Extract, Madecassoside, Madecassic Acid), Green Tea Extract, Aloe Vera Leaf Extract, Complex Herb Extract

'The most effective sunscreen is the one you will use that wearing one consistently'

Airless pump container for clean use from start to finish

- 1 Blocks external pollution, and keeps hygienic
- 2 Keeps formula stable
- 3 Prevent exposure to air to maintain UV protect function
- 4 Economical use



Skin Irritation Test Completed 40.DOTP.75 / 30ml

O2 Tox Peel [Anti-wrinkles, Brightening]

53% of Centella Asiatica Extract, EGF, FGF, and Peptides Complex together with micro white spicules enrich the skin's natural strength, and it is a pore-specialized spicule peeling serum that gently absorbs through soft bubbles.

Main Ingredients | Regularly skin turnover: White spicule
 Skin protection: Centella Asiatica Extract
 Skin boost: rh-Oligopeptide-1(EGF), rh-Polypeptide-11(FGF)
 Skin elasticity: Copper Tripeptide-1
 Anti-wrinkle: Acetyl Hexapeptide-8, Palmitoyl Pentapeptide-4
 Moisturizing: Myristoyl Pentapeptide-17



Point 1. Micro White Spicule

Spicule penetrates the skin and stimulates skin cells as well as delivers active ingredients into the skin



Point 2. Oxygen bubble

Coated with fine bubbles to minimize skin irritation when penetrates spicules



Point 3. Peptides Complex

Deeply penetrate the epidermis and act as building blocks to produce proteins like collagen, keratin, and elastin

Tips for use

1. Dispense O2 Tox Peel and spread thinly on the face. (4 pumps for the entire face / 1 pump for a part)
2. Wait for bubbles to rise.
3. When all the bubbles come up, let the serum penetrate as if pressing down. (slight sting is felt as the micro spicules are penetrated into the skin.)
4. gently press for penetrating and absorbing without rubbing. (Use together with Derma Revive Triple Action Mask & Ami-sterol Cream to help soothe the skin)

DERMATHOD suggests the optimal skincare solution that actualizes the beauty with the newest scientific method to solve skin concerns.

Find Distributors: jakesun@cosplan.net

COSPLAN Inc. #1214, 111, Digital-ro 26-gil, Guro-gu, Seoul, Republic of Korea ZIP 08390
T +82 2 6747 1103 / H www.DERMATHOD.com / E jakesun@cosplan.net /  [@dermathod](https://www.instagram.com/dermathod)

* This material is for in-company training. Unauthorized distribution prohibited.