



Step-overs

Warranted & Certified

To BS EN ISO 14122-3:2016

(Safety of machinery-Permanent means of access to machinery. Stairs, step ladders & guardrails)

Galvanised to BS EN 1461:2009

Plated Warranty I.D. Tag

Incorporating Tiger Gratings[®] Stair treads & Platforms

Lockinex
great service, great quality

Revision #	Revision Date
# 0	18/01/2023

INTRODUCTION

Lockinex Step Overs are manufactured and distributed in "Kit" form.
(Installation service is also available-Contact for details)
Kits comprise of all the necessary components to construct a walkway, safely, quickly and economically.

Individual components are available in Mild Steel Galvanised.

Application

Where an access route is required for the maintenance of plant and equipment.

Design

Warranted & Certified

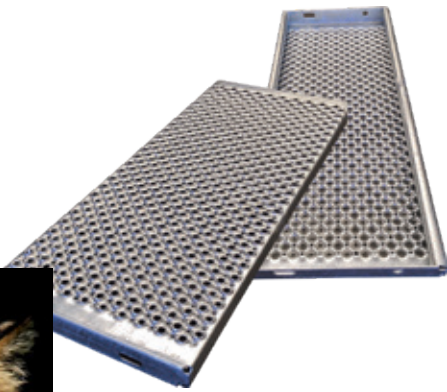
To BS EN ISO 14122-3:2016
(Safety of machinery-Permanent means of access to machinery. Stairs, Step Ladders & Guardrails)

Galvanised to BS EN 1461:2009

Simple to use components, available directly from stock.



Rubber Feet for Roof Top installations and areas where there is need for repositioning at any time.

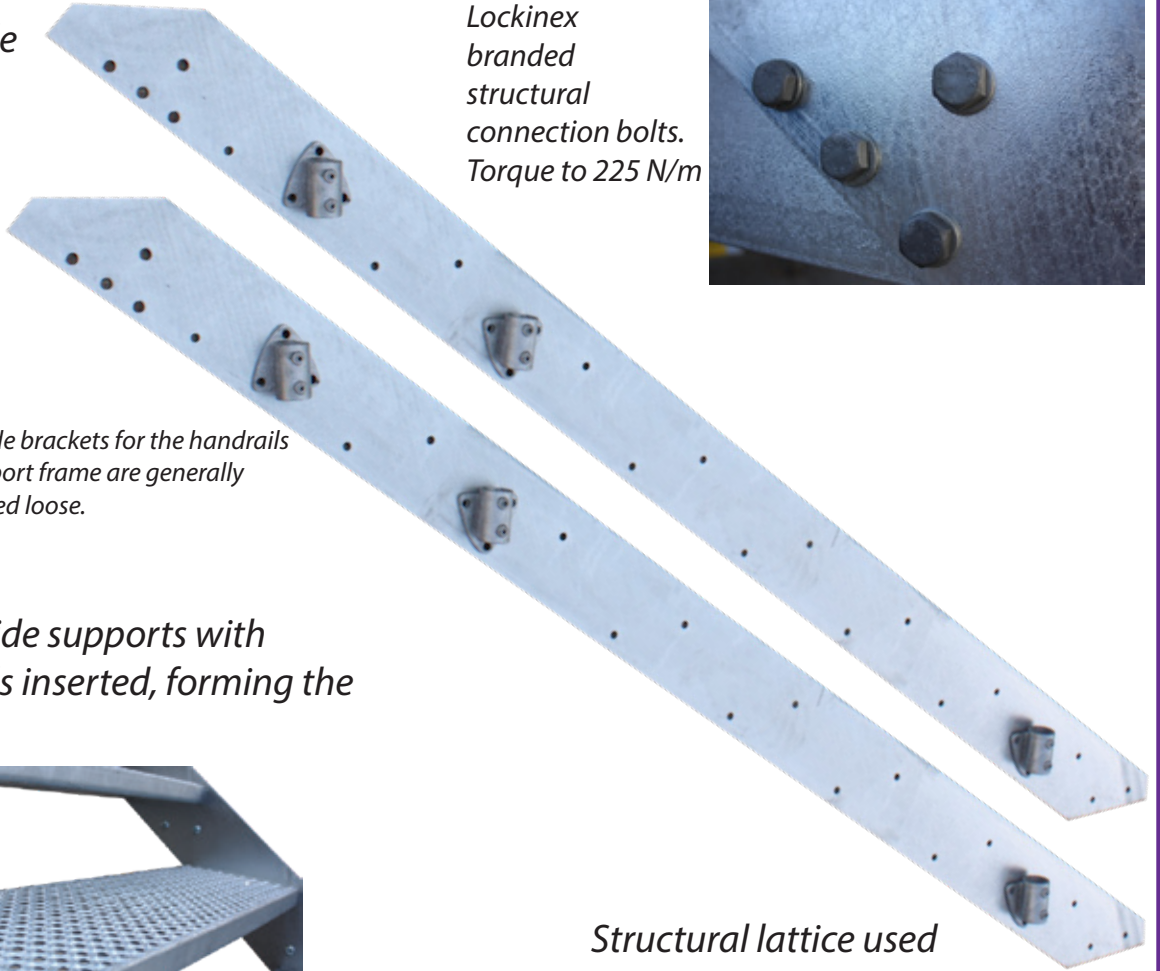


Tiger Perforated Gratings used for Stair Treads & Platform. These provide the lowest risk of slip in the Ceram Slip Test. They register as "Extremely Low" risk.

Sea Defence walls, with 8 Step "Step-over" to assist Ship's crew disembarking to and from dockside. Chosen by the Environment Agency for the exceptional quality and safety in their design.

System Components Overview

Stairway side supports (Stringers)

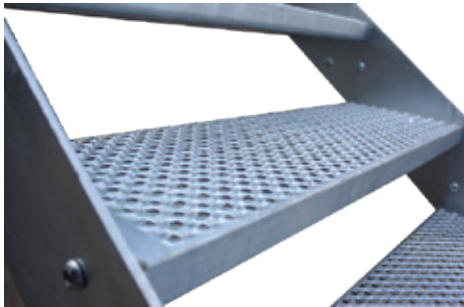


Lockinex branded structural connection bolts. Torque to 225 N/m



The side brackets for the handrails & support frame are generally supplied loose.

Stairway side supports with Stair Treads inserted, forming the stairway.



Structural lattice used to support tall step over structures.



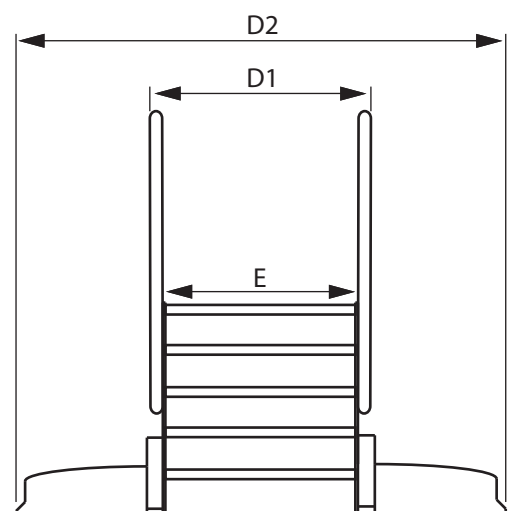
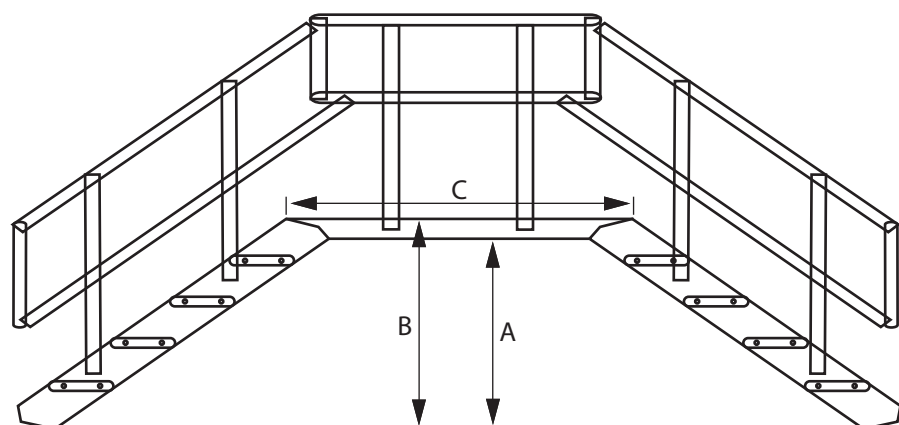
Handrail and toe-board to prevent falling of personnel and/or loose objects.





Freestanding system

Fixed system



System Type	'A' (Underside clearance)	'B' (Platform height)	'C' (Platform length)	'D1' (Fixed system max. width)	'D2' (Freestanding system max. width)	'E' (Platform/stair width)
Freestanding	145	360	*1 or 1.5mtr sections	N/A	1850	800
Freestanding	325	540	*1 or 1.5mtr sections	N/A	1850	800
Freestanding	505	720	*1 or 1.5mtr sections	N/A	1850	800
Freestanding	685	900	*1 or 1.5mtr sections	N/A	1850	800
Freestanding	865	1080	*1 or 1.5mtr sections	N/A	1850	800
Freestanding	1045	1260	*1 or 1.5mtr sections	N/A	1850	800
Freestanding	1225	1440	*1 or 1.5mtr sections	N/A	1850	800
Freestanding	1405	1620	*1 or 1.5mtr sections	N/A	1850	800
Freestanding	1585	1800	*1 or 1.5mtr sections	N/A	1850	800
Fixed	145	360	*1 or 1.5mtr sections	970	N/A	800
Fixed	325	540	*1 or 1.5mtr sections	970	N/A	800
Fixed	505	720	*1 or 1.5mtr sections	970	N/A	800
Fixed	685	900	*1 or 1.5mtr sections	970	N/A	800
Fixed	865	1080	*1 or 1.5mtr sections	970	N/A	800
Fixed	1045	1260	*1 or 1.5mtr sections	970	N/A	800
Fixed	1225	1440	*1 or 1.5mtr sections	970	N/A	800
Fixed	1405	1620	*1 or 1.5mtr sections	970	N/A	800
Fixed	1585	1800	*1 or 1.5mtr sections	970	N/A	800

* Platforms are supplied in 1 or 1.5mtr sections. Multiple sections can be bolted together to obtain overall needed platform length.

Maintenance/Design/Manufacture

Maintenance

Manufactured from mild steel, with a hot dipped galvanised finish to BS EN 1461:2009.

Once installed this product requires very little maintenance.

Once the structural fixings have been connected, at initial install, they should not require any further attention. Depending on the local environment it may be prudent to have these checked at an agreed interval to ensure there has been no tampering or removal.

Design

When standard kit components are fully assembled, as per our product literature, compliance with BS EN ISO 14122-3:2016 will be achieved.

Should the contractor/third party installer adapt/alter the step over in any way, consideration should be given to the proposed alterations.

Guidance can be found within BS EN ISO 14122-3:2016

Manufacture

Warranted & Certified by Lockinex UK Ltd

To BS EN ISO 14122-3:2016

(Safety of machinery-Permanent means of access to machinery. Stairs, Step Ladders & Guardrails)

Lockinex UK Ltd reserves the right to alter, re-design, remove options or remove products from sale at any time without notice.