

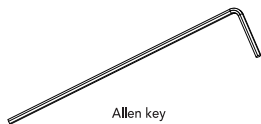


# Schlage **Ease**<sup>TM</sup>

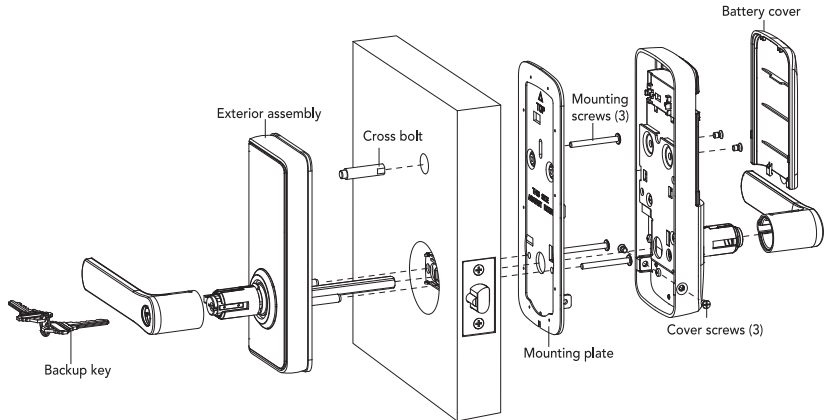
S2 SMART ENTRY LOCK

Quick Start Guide

# Parts



Allen key



Exterior assembly

Cross bolt

Mounting screws (3)

Battery cover

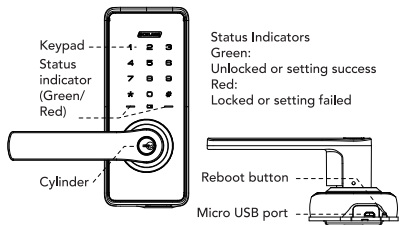
Backup key

Mounting plate

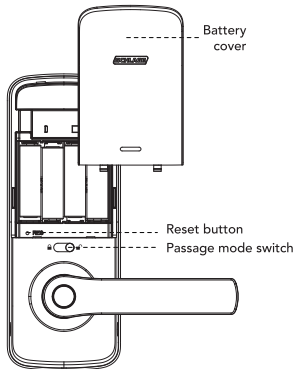
Cover screws (3)

For more information visit [schlage.com.au/ease](http://schlage.com.au/ease) or [schlage.co.nz/ease](http://schlage.co.nz/ease)

## Exterior assembly



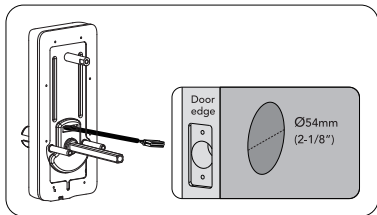
## Interior assembly



Master and User PIN codes have 4–10 digits.  
The default master PIN code is [12345678].  
Please change it prior to programming of the lock.

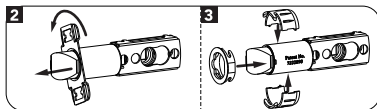
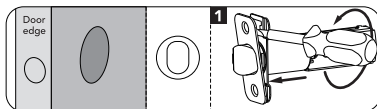
## Preparing for Installation

1. Measure the dimension of the hole shown.



2. Swap face plate to drive-in (optional).

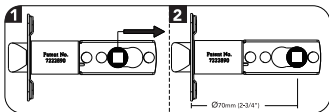
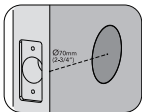
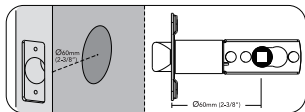
Schlage Ease can use a drive-in face plate if you prefer. If you wish to use the standard face plate configuration, you can skip this step.



3. Adjust the latchbolt.

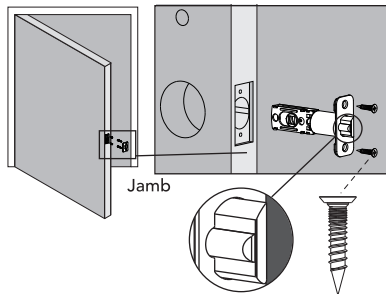
NOTE: Latch ships with backset in 60mm (2-3/8") position. If required, turn the latch case and pull to extend to 70mm (2-3/4") backset position (pictured next page).

- ⚠ The latch must be in retracted (unlocked) position when you are changing basket.

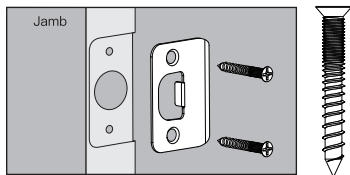


## Installation

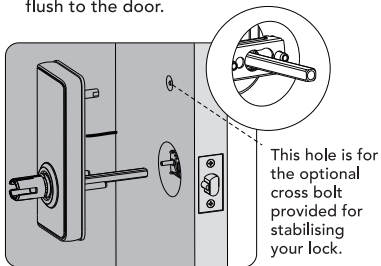
1. Install latch on the door, ensuring the angled side of the latch is facing the door jamb/frame.



2. Install strike into door jamb.



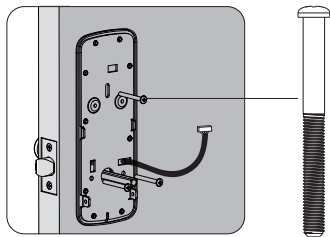
3. Install exterior assembly flush to the door.



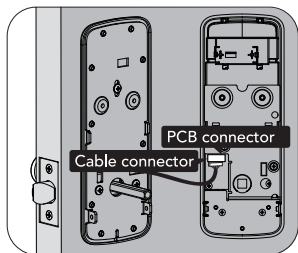
NOTE: Cable must go through door hole under the latch.

If you drilled a hole, securely tighten the post before mounting on the door.

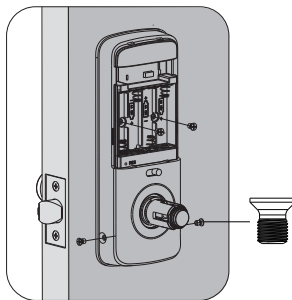
4. Position the inside mounting plate by first routing the cable and connector through the mounting plate's cable hole. Secure both assemblies using 8/30 screws.



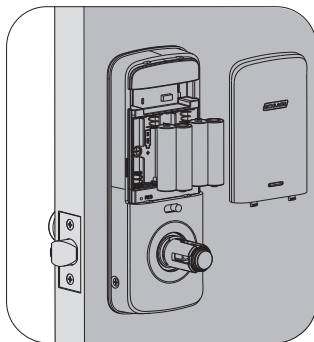
6. Attach cable assembly to the interior assembly PCB by lining up notches on top of cable connector to slots on PCB connector. Press connector in firmly until completely connected.



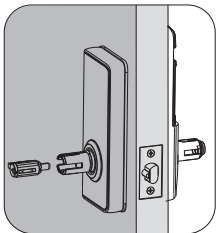
7. Install interior assembly on inside mounting plate. Secure using screws through the interior assembly onto the mounting plate.



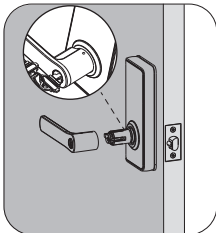
8. Install batteries and battery cover.



9. Install cylinder, ensuring the tip of the cylinder is facing away from the latch (towards the hinge side).



10. Install exterior lever.



11. Install interior lever.



## Warnings

- Do not install batteries until the lock is completely installed on the door.
- Failure to follow these instructions could result in damage to the product and void the factory warranty.
- The accuracy of the door preparation is critical for the functioning and security of this product. Misalignment can cause performance degradation and lessening of security.
- Finish Care: This lockset is designed to provide the highest standard of product quality and performance. Care should be taken to ensure a long-lasting finish. When cleaning is required, use a soft, damp cloth. Using lacquer thinner, caustic soaps, abrasive cleaners or polishes could damage the coating and result in tarnishing.

## Factory default settings

Settings	Factory default
Master PIN code	12345678
Beeper	Enabled
Wrong code entry limit	5 times
Shutdown time	3 minutes
Bluetooth mode	Enabled

If you need to reset your lock, the reset button can be found in the battery casing unit. Use a pointed object, press and hold the reset button for over 5 seconds until you hear the voice guide.

## Definitions

### Fake PIN code:

Random numbers that are added before or after the user PIN. This prevents the user PIN from being exposed.

### Master mode:

The master mode could be entered by entering [\*\*Master PIN Code #] to program the lock.

### Master PIN code:

The master PIN code is used for programming and for feature settings.

### Passage mode:

The lock can be switched to passage mode by toggling the switch on the internal side. In this mode, it is unlocked inside/out and you may enter freely. You may still lock the unit externally by holding any key for 2 seconds. It will resume passage mode when unlocked via PIN or key override until the passage mode switch is shifted to the locked position. Note: Enabling and disabling passage mode can only be done on the internal side of the unit via the switch.

### Reset button:

After reset operation, the lock will be restored to factory default settings, all user credentials will be deleted. Refer to page 6 for instructions on how to reset your lock.

### Shutdown time:

The lock will shutdown for a default of 3 minutes and not allow operation after the wrong code entry limit (5 times) has been met. When the unit is in shutdown, the light will flash if you are trying to use the keypad.

### Silent mode:

Disables the tone sound.

### Status indicators:

Located on exterior assembly.

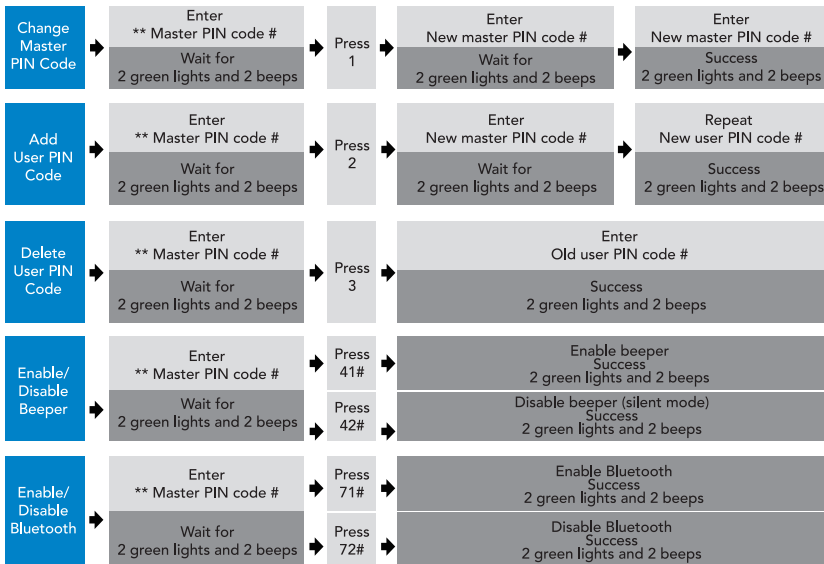
### User PIN code:

The user PIN code operates the lock. Maximum number of user PIN codes is 20.

## Hardware specifications

Item	Specifications	Notes
External assembly	165mm (L) x 70mm (W) x 22mm (D)	Operation temperature: -20°C to 55°C
Internal assembly	196mm (W) x 73mm (W) x 28mm (D)	
Battery	AA alkaline battery x 4 (Operation voltage: 4.6~6.0V)	Lasts up to one year (10 times open/close per day)

## Lock operation



### Notes:

1. Beeps sound only when sound is enabled.
2. If the indicators show 3 red lights and 3 beeps, your setting has failed. The system will exit master mode. Please enter master mode to try again.



## Setting PIN codes

1. Master PIN Code (4~10 digit): Default master PIN code is "12345678", please modify it after installation.  
If you forget your master PIN code, you can reset your lock back to factory settings (refer to page 6 for instructions).
2. User PIN Code (4~10 digit): User PIN codes can be set up through master PIN code. Up to 20 user PIN code can be stored.
3. Both master and user PIN codes don't support the following combination of numbers.

A. 

1	2	3	4	5	6	7	8	9
---	---	---	---	---	---	---	---	---

 ✗

Forward number sequence

B. 

9	8	7	6	5	4	3	2	1
---	---	---	---	---	---	---	---	---

 ✗

Backward number sequence

C. 

2	2	2	2	2	2	2	2	2
---	---	---	---	---	---	---	---	---

 ✗

Repeat number sequence

D. If 

5	6	8	3
---	---	---	---

 ✓

Then 

5	6	8	3	9	1
---	---	---	---	---	---

 ✗

and 

9	1	5	6	8	3
---	---	---	---	---	---

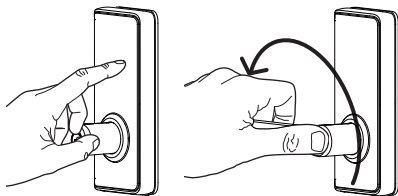
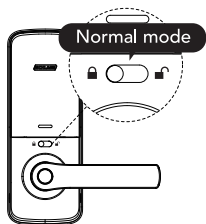
 ✗

Contain existing code sequence

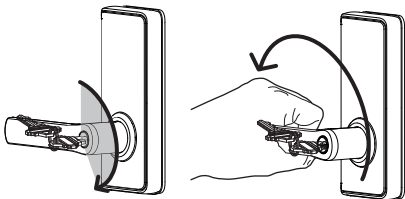
## How to use

### Normal mode

1. Enter the master or user PIN code into the keypad, then rotate the lever to open the door. Door will automatically re-lock 7 seconds later.

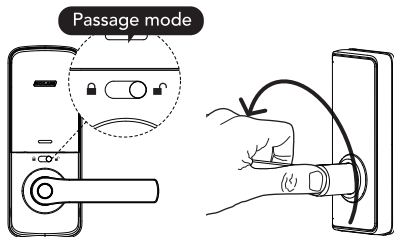


2. Alternatively use the backup key provided.



## Passage mode

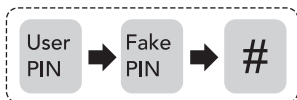
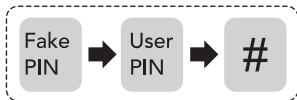
1. Rotate the lever directly to open the door.



2. Press any key on the keypad for 2 seconds to lock the door.



## Unlock with fake PIN code



User can prevent PIN code exposure from strangers by entering random digits before or after PIN code.

---

## Emergency Power

If unit is locked and you require emergency battery power, located on the bottom of the external unit is a Micro USB Port (refer diagram on page 3). Using a micro USB cable and charged power bank, you can power the lock to regain access as required.

---

## Warranty conditions

The Schlage Ease™ provides a 2 year warranty. Our goods come with guarantees that cannot be excluded under the local consumer law. You are entitled to a replacement or refund for a major failure and for compensation for any other reasonably foreseeable loss or damage. You are also entitled to have the goods repaired or replaced if the goods fail to be of acceptable quality and the failure does not amount to a major failure.

## Get mobile access with Schlage Abode

For an enhanced experience and functionality, try using the Schlage Ease™ with the Schlage Abode mobile application. Simply download the Schlage Abode app from the Apple App Store or the Google Play Store. Manage and control your lock with the ease of your smart phone with greater control and access.



## Schlage Wi-Fi Bridge (AB100)

Empower your Schlage Ease™ lock with Wi-Fi capability. The Schlage Wi-Fi Bridge (AB100) pairs to your Schlage Ease™ lock, to provide you with a real-time connection through your smartphone.

Ask your retailer about the Schlage Wi-Fi Bridge (AB100), sold separately.





For more information visit  
**[allegion.com.au/ease](http://allegion.com.au/ease)** or **[allegion.co.nz/ease](http://allegion.co.nz/ease)**

Australia  
1800 098 094  
[info.au@allegion.com](mailto:info.au@allegion.com)  
[www.allegion.com.au](http://www.allegion.com.au)

New Zealand  
0800 477 869  
[nzinfo@allegion.com](mailto:nzinfo@allegion.com)  
[www.allegion.co.nz](http://www.allegion.co.nz)

South East Asia  
+65 6488 2562  
[sea.info@allegion.com](mailto:sea.info@allegion.com)  
[www.allegion.com](http://www.allegion.com)

