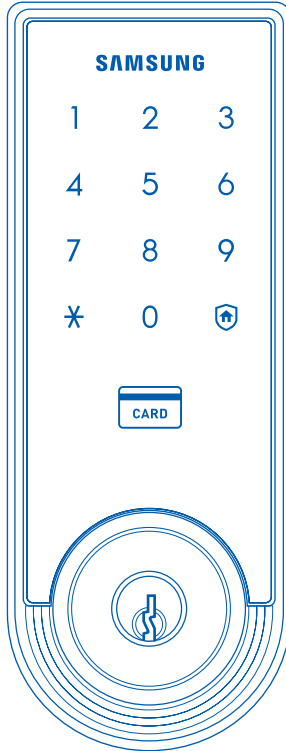




SAMSUNG SDS

Samsung SDS
Digital Door Lock



Samsung SDS Digital Door Lock

User Guide SHS-3320/3321

Please review all included documentation and use the product as intended. Safety precautions must be followed to avoid personal injury or property damage.

Table of Contents

Introduction & Helpful Tips	2
Installation	3
Components & Tools	3
Door Preparation	4-5
Preparing the parts	6
Installing Lock	7
Setting of Right-Handed / Left Handed	10
Programming	11
Basic Lock Operation Overview	11
Programming Features & Definitions	12-15
Programming User PIN Codes & User Cards	16-17
Security Functions	18
Miscellaneous	19
Miscellaneous Information	19
Troubleshooting	20-21
User Registration Table	22
Product Specifications	23
Warranty	24-25
Drilling Template	27-30
Tailpiece Setting	31

Introduction

Congratulations on the purchase of your Samsung SDS Digital Door Lock! Your lock has a touch sensitive number display pad and optionally a 13.56MHz Card reader. Up to 70 users can be registered to gain access with unique Codes or Access Cards (supports ISO14443A type).

The touchscreen makes it convenient to enter the code and the Randomizer function helps prevent lockpicking using fingerprint traces on the touchscreen. Other convenient functions such as Automatic Locking / Sound Setting / Out-of-Home Security, etc. provide advanced security and peace of mind.

You can unlock the door using video intercom's monitor after connecting a Samsung video intercom. (Refer to page 9 for connection diagram to a video intercom).

Helpful Tips

Do not attempt to repair the product yourself.

Change your codes regularly to ensure the security of your codes.

Minimize the lock's exposure to moisture including wet hands and direct contact with liquids.

Do not exert excessive force or use sharp instrument on the touchscreen.

Insert the batteries according to correct polarity.

When the low-battery warning sounds, replace all batteries immediately.

Do not mix old batteries with new batteries.

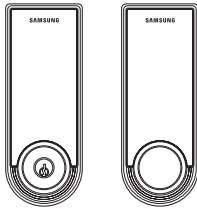
Use soft, dry cloth to clean the lock and avoid cleaning with water, alcohol or other chemicals.

Installation

Components & Tools

Components and Drawing

A Exterior Unit

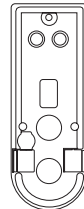


SHS-3320 (With key hole) SHS-3321 (Without key hole)

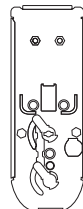
B Interior Unit



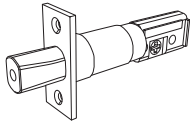
C Interior Rubber Pad



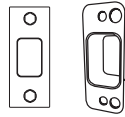
D Interior Mounting Plate



E Adjustable Deadbolt

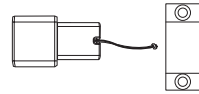


F Strike Parts



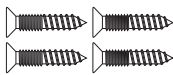
Strike Dust Box

G Magnetic Sensor



Door Side Doorframe Side

H1 Screw for Strike and Dead bolt



Spec: FH+T4x19

H2 Screw for mounting plate



Spec: TH+M4x40

H3 Screw for Interior unit



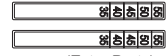
Spec: FH+M4x8

H4 Screw for Reinforcement plate



Spec: FH+T5x76

I Tailpiece



(Extra Parts)

J RF Tag

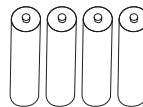


K Mechanical Keys



Note: Only for SHS-3320

L Batteries



M User Manual



Tools

Door Preparation

- 2-1/8" (54mm) hole saw: Main Hole
- 1" (25mm) hole saw: Dead bolt hole
- 1/8" (2.5mm) drill bit: Dead bolt screw hole
- Chisel and hammer
- Drill

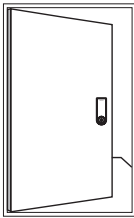
Lock Installation

- #2 Phillips screwdriver
- Pincers: Cut the tailpiece

Door Preparation

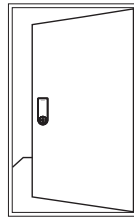
Step 1. Check the Door Status

- 1) This lock supports door thickness of 1-3/8" to 2-5/32" (35 to 55mm).
- 2) Using the provided lock template, ensure that there are no obstructions that would prevent installing the lock properly.
- 3) Take note of which orientation the deadbolt will need to be installed, left hand or right hand.



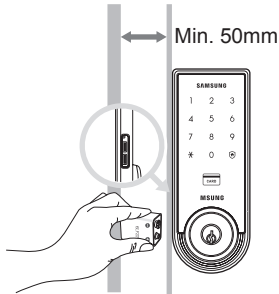
Left-handed Door

When viewed from the Outside, the hinge is on the left.



Right-handed Door

When viewed from the Outside, the hinge is on the right.

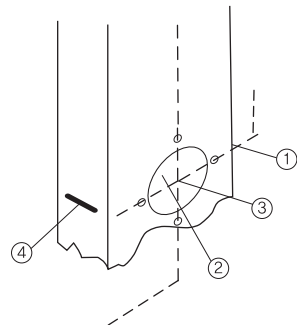


Please, be aware of that there has be more than 50mm gap between the door frame and the external power contact to place the 9V battery for temporary access.

Step 2. Mark on the Door

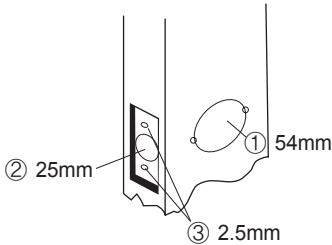
Check the location and direction of the deadbolt, attach the drilling template (page 27) on the side of the door, and mark on it with a pen.

- 1) Align the horizontal line across the door.
- 2) Align the vertical line over the door.
- 3) Mark the centers of the holes with the drilling template.
- 4) Mark the centerline of the deadbolt by aligning it with the vertical line.



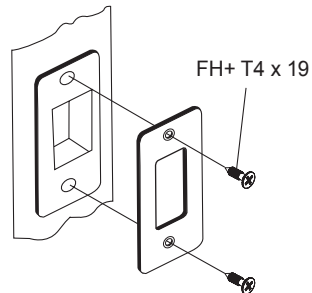
Step 3. Drilling

- 1) Drill a 2-1/8" (54 mm) diameter hole through the door, as indicated on the template, using a hole saw.
- 2) Drill a 1" (25 mm) mortise hole using a hole saw.
- 3) Drill strike plate holes using a drill bit (1/8", 2.5 mm).



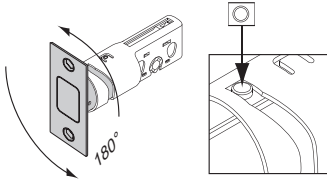
Step 4. Strike Plate Installation

- 1) Using the template, locate the center horizontal line for the deadbolt hole, which lines up with the center of the 2-1/8" hole, and draw a horizontal line on the door frame to mark where you will make the deadbolt mortise hole.
- 2) Measure half the thickness of the door. Now, measure that distance from where the door stops at the frame when the door is closed toward the door jamb and mark a straight, vertical line the length of the door strike plate. Draw a horizontal line from the mark you made in Step 1 toward the vertical line. Where both lines cross, make a 1" (25 mm) diameter hole, 1/2" (13 mm) in depth.
- 3) Align the holes of the strike plate with the vertical line. Trace the outline of the strike plate and mortise with a 1/16" (1.6 mm) indentation. Attach the strike plate with the 2 screws provided.



Preparing the parts

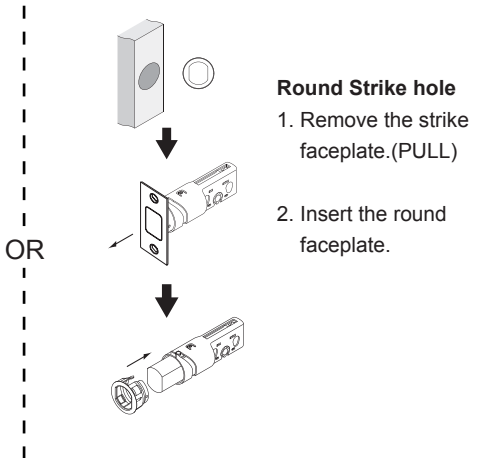
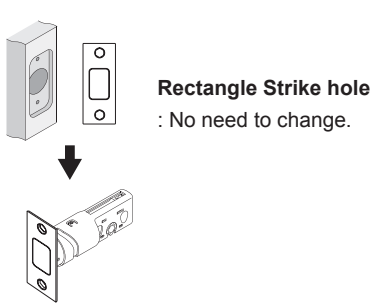
1. Adjusting the length of the dead bolt



Turn the body of the dead bolt to adjust the length of the dead bolt.
It can be 60mm (2-3/8") or 70mm (2-3/4")

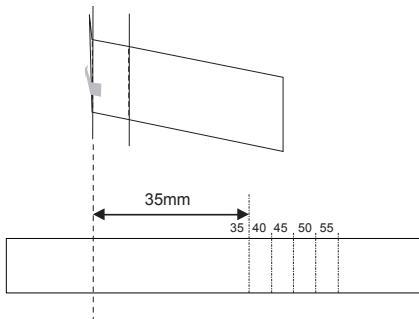
2. Changing the faceplate of the dead bolt

Change the faceplate of the dead bolt following the size of a strike hole.



3. Adjusting the length of the tailpiece

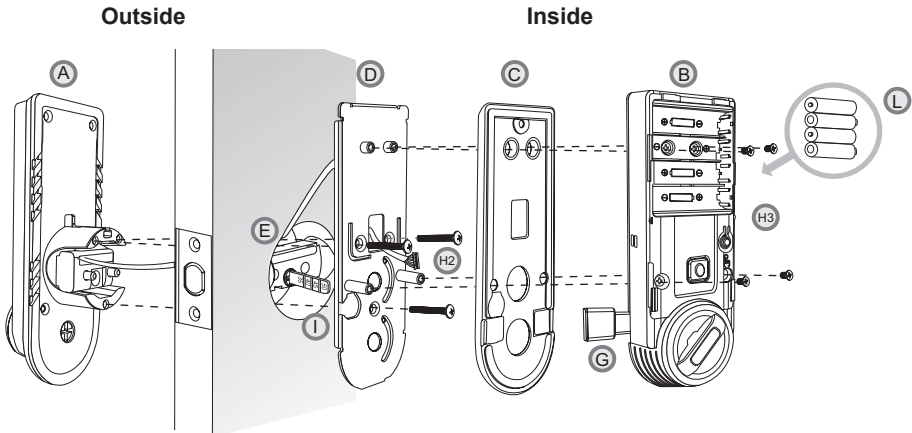
• Tailpiece drawing



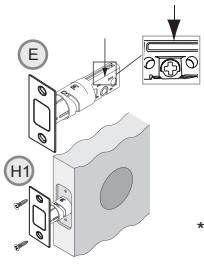
How to cut

1. Press the V-cut line with pincers to make more cut line.
 2. Hold the end of the tailpiece with pincers.
 3. Bend it up and down until it is separated.
- For more information, refer to page 31.

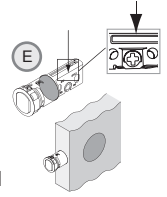
Installing lock



1. Installing the Dead Bolt(E)

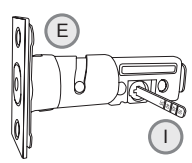


1. Before installation
 - 1) Check the faceplate type of your door.
 - 2) Make sure the deadbolt direction as shown before inserting it into a door side.
2. Insert the deadbolt from the side of the door.
3. Fix the deadbolt using two FH+T4X19 screws.



*If there is round strike hole, change the faceplate, and insert the deadbolt following right side drawing.

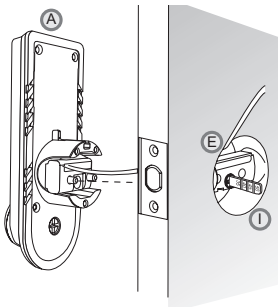
2. Installing the Exterior Unit



Left-handed



Right-handed



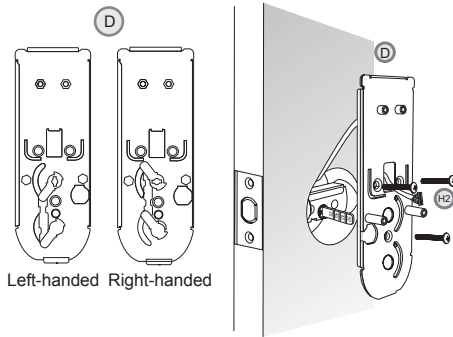
1. Ensure the Exterior Unit is aligned with the center hole of the deadbolt and the tailpiece is already cut.
2. Attach the exterior unit.
3. Insert the tailpiece to the exterior unit through the dead bolt.

The dead bolt must be in a retracted position.

CAUTION: In case of right-handed door, insert the tailpiece horizontally.

In case of left-handed door, insert the tailpiece vertically.

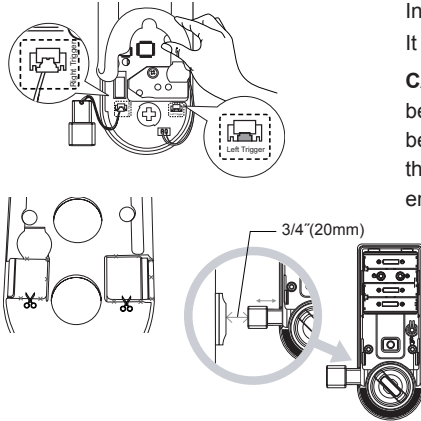
3. Installing the Mounting Plate



1. Detach the Interior Mounting Plate from the interior unit.
2. According to the right or left handed door, adjust the link, and attach the mounting plate.
3. Fasten the interior mounting plate with three TH+M5x40 (H2) 90% of the way.
4. Align the Exterior Unit with the Interior Mounting Plate and then tighten the screws.
5. Cover the rubber pad on the Interior Mounting plate.

CAUTION: Do not over-tighten, and check the movement of dead bolt by the mechanical key.

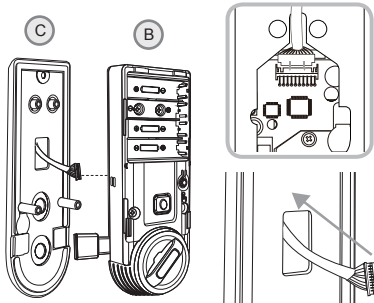
4. Installing the Magnetic Sensor



Install the door side magnetic sensor.
It should be installed in right way of the door.

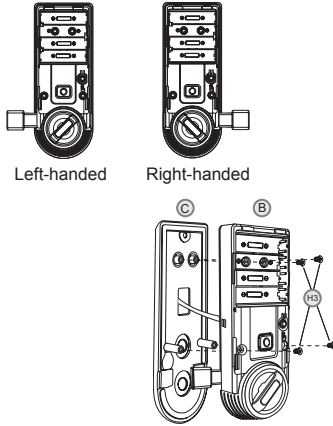
CAUTION: The gap of the magnet sensors between the door side and the door-frame should be within 3/4" (20mm). If the gap is too wide, pull out the door side magnetic sensor to adjust the gap enough to detect.

5. Connecting the cable



1. Connect the cable from the exterior unit to the interior unit.
2. After connecting the cable, push the cable into the hole of the door.

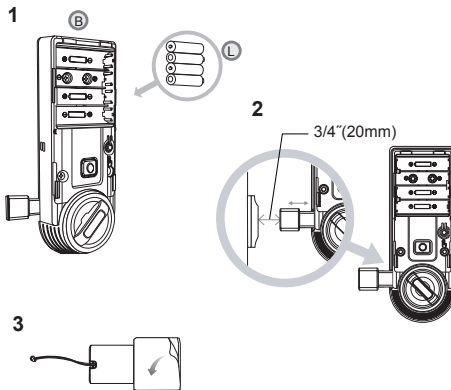
6. Fix Screw for the Interior Unit



1. Before installing the interior unit, check the direction of the thumb turn while the dead bolt is in the OPEN POSITION.
2. Open the battery cover.
3. Align the Interior Unit on to the Interior Mounting Plate, and attach it with 4 screws.

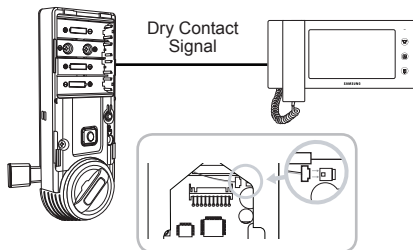
CAUTION: Check the movement of the dead bolt by the thumb turn.

7. Final Check



1. Install 4 batteries. A Melody will sound when all 4 batteries are installed correctly.
 2. Close the door to detect the magnetic sensor. You can hear the beep sound when the magnetic sensor detects. After that, press [OPEN/CLOSE] button to check whether the dead bolt works properly.
 3. Stick the magnetic sensor with attention on the distance.
- CAUTION:** The gap between the door side and the door-frame magnetic sensors should be close enough to be detected.

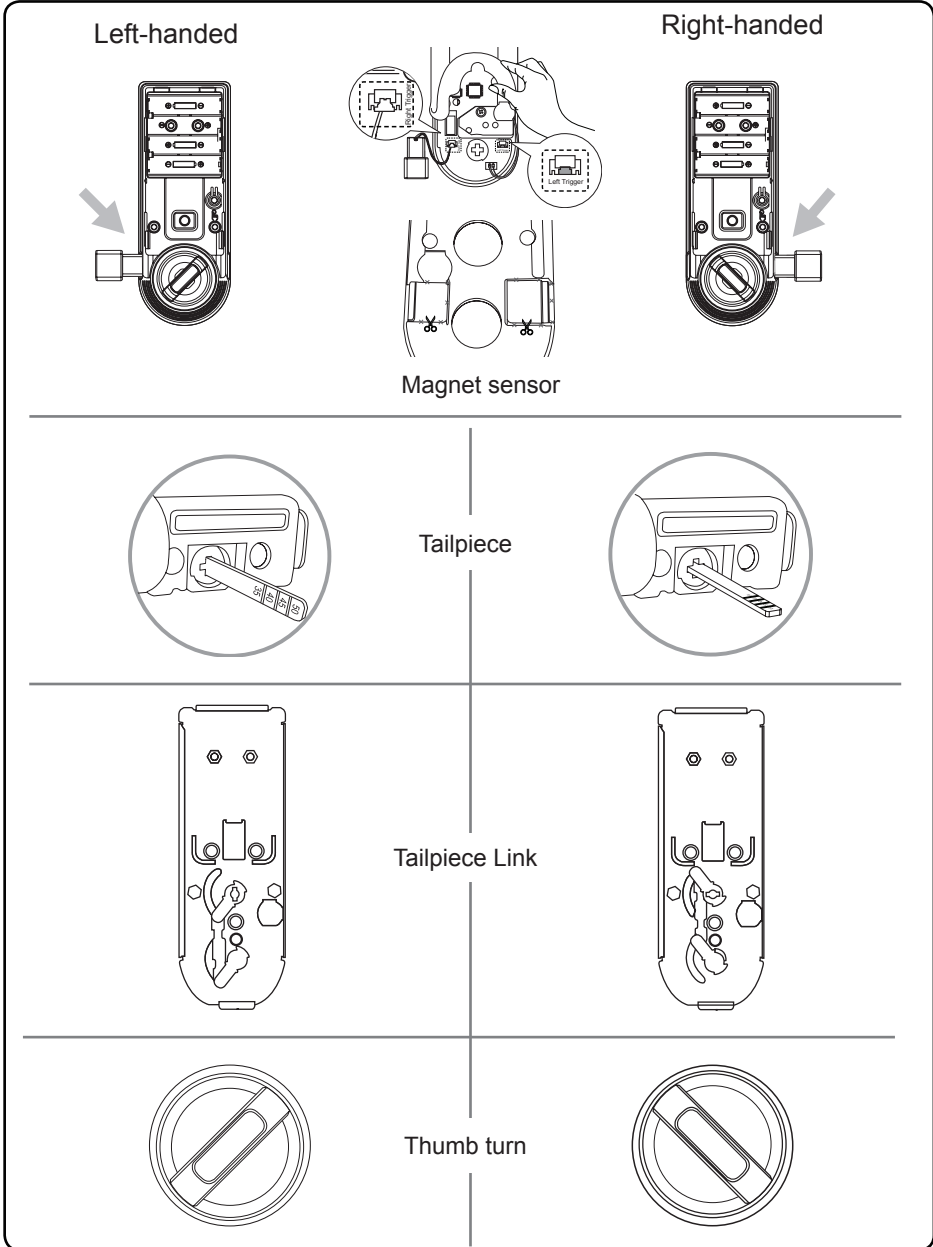
OPTION : Connection for Video Intercom



Connect the cable of video intercom to the Interior Unit.
SHS-3320/3321 receives 1 second of dry contact signal to open the door remotely. It is normally compatible with SHT-3006 and other Samsung Video Intercom systems.

Setting of Right-Handed / Left Handed

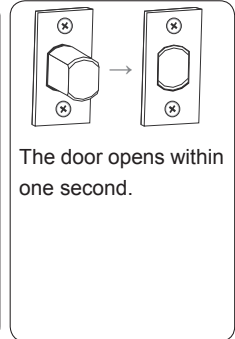
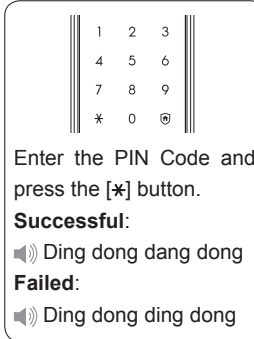
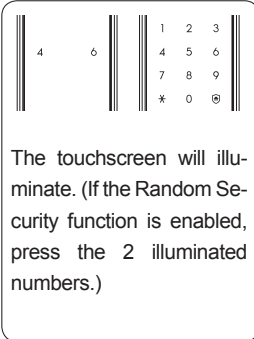
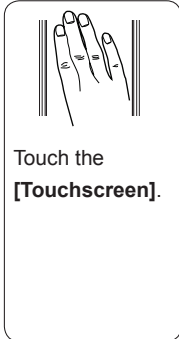
*All status should be checked while the dead bolt is in OPEN POSITION.



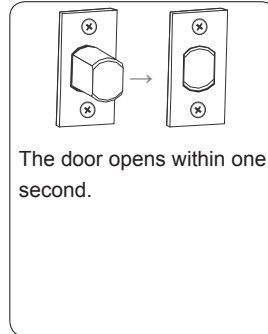
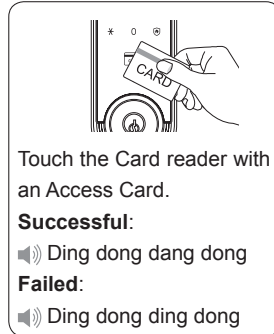
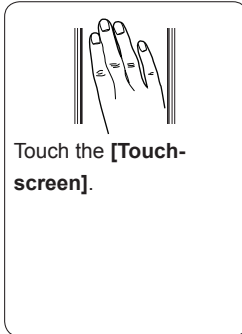
Programming

Basic Lock Operation Overview

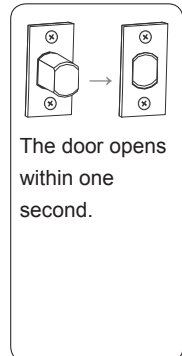
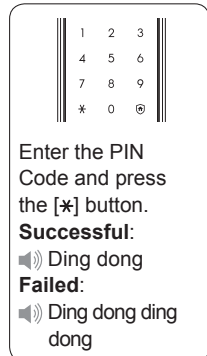
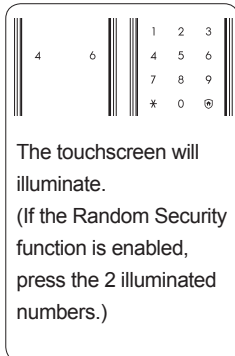
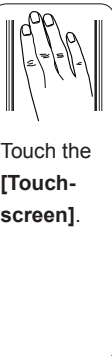
Opening the Door with a PIN Code



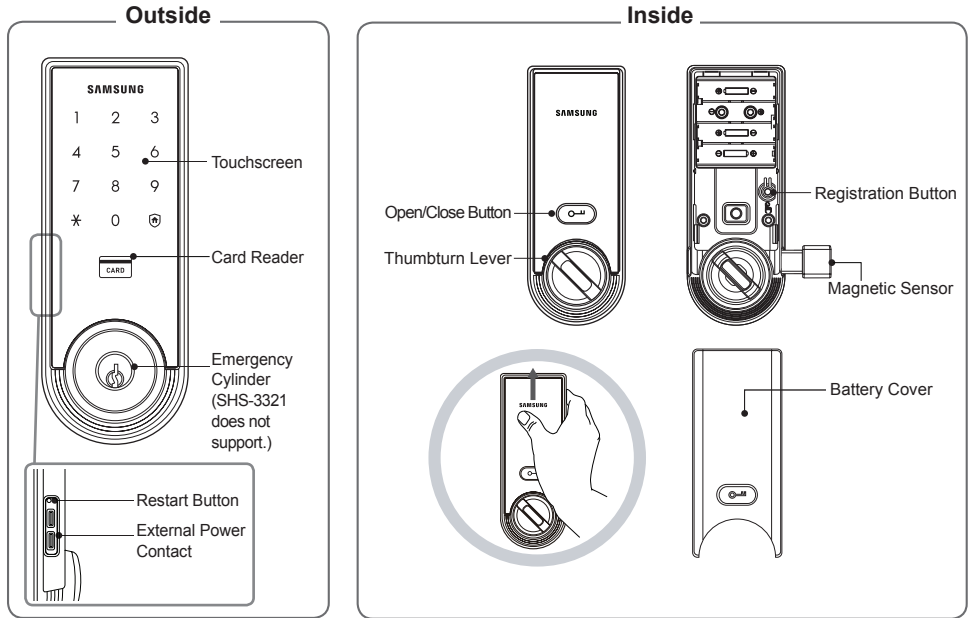
Opening the Door with a Card









Opening the Door in Double Authentication Mode



Programming Features



Symbols	Description	Symbols	Description
	Touch the [Touchscreen] .		Press the [*] button. It is used to complete number entry.
	Press the [Registration] button. It is used to change the PIN Code or set other functions.		Enter the Master PIN Code (4~12 digits). Factory Default: 1234
	R: Press the [Registration] button briefly (~1 second)		Press the Number buttons.
	R5: Press the [Registration] button for 5 seconds R10: Press the [Registration] button for 10 seconds		

Symbols	Description	Symbols	Description
	Enter the User PIN Code (4~12 digits).		Repeat the process inside the rectangle.
	Touch the Card reader with the User Card.		Press the [OPEN/CLOSE] button.
	Enter the User/Management Number. Can be set from 1 to 70.		Sound Icon Display.

Sound Indicators

Sound	Description
Fur Elise Tiritiritiririri	Low voltage warning sound accompanied with [OPEN/CLOSE] button flashing red.
Ding	Button input sound
Ding dong ding dong	Error sound
Ding dong dang	Success sound
Ding dong	Input standby sound
Toot~ toot~ (10 seconds)	Malfunction prevention warning
Ti~ ti~ ti~ ti~ (5 minutes)	Intrusion Detection/Out-of-home Security warning
Too~~t, too~~t	Double-locking sound

Definitions

Double Authentication Mode : This mode requires both User Card and PIN Code to open the door, ensuring more security. However, Master PIN Code can open the door regardless of mode. To enable this mode, more than 1 User Card and PIN Code must be registered. This mode is disabled by default.

Double-locking : Double-locking prevents the lock from being unlocked from the outside. You can enable it by using the [OPEN/CLOSE] button.

Emergency Power Contact : Continuing to use the lock without replacing batteries when required will lead to the batteries discharging and cause the lock to malfunction. You can open the door by touching the external power contacts on the Exterior Unit with a 9V battery and then touching with the Card or entering the PIN Code.

Indicator Lamp : Indicates the operational status when the Card is being read or the lock is in operation.

Intrusion Detection Function : When the Interior Unit is forcibly detached while the door is locked, it is detected by the magnetic sensor and an alarm is sounded. (The function is not activated when the magnet is not used.)The Intrusion Detection function is a basic function and cannot be enabled or disabled.

Locking Mode (Auto/Manual) : You can enable or disable the function for locking the door automatically when it is closed. The factory default is 'Auto mode'.

- Auto: The door is locked automatically 2 seconds after it is closed. However, it does not function if the magnet is not used or the batteries are completely discharged.

- Manual: When the door does not lock automatically when it is closed, touch the [Touchscreen] or the [OPEN/CLOSE] button on the Interior Unit will lock the door.

Low Voltage Indicator : Refers to the state when the operating voltage of the lock is lower than the standard voltage, and activates the Low Voltage Alarm ("Fur Elise") to indicate that the batteries need to be replaced. Use the Emergency Power when the batteries are completely discharged.

Magnetic Sensor : Detects the opening and closing of the door.

Malfunction Prevention Function (Mischief Prevention Function) : When more than 5 failed authentication attempts with unregistered PIN Codes/Cards occur, a warning sounds for 10 seconds, and the lock stops operating for 3 minutes. While lock operation is stopped, a 'beep' is sounded every 10 seconds and the lock is activated again automatically after 3 minutes. The Malfunction Prevention function is a basic function and cannot be enabled or disabled.

Thumbturn Lever : When the batteries are completely discharged, this device is used to mechanically lock or unlock the door from inside.

Master PIN Code : You can enter only one Master PIN (4-12 digits) Code. You can register the User PIN Codes/Cards after authenticating with the Master PIN (4-12 digits) Code. You can open the door with the Master PIN Code, and the factory default is '1234'.

OPEN/CLOSE Button : A one-touch button to open the locked door. (It is also used to lock the door from inside in the Manual locking mode.)

Out-of-Home Security Function : This function prevents intrusions from outside when no one is home. Pressing the [OPEN/CLOSE] button while the Out-of-Home function is enabled sounds an alarm. You can enable this function by touch of a certain button.

Random Security Function : This mode prevents the disclosure of the PIN Code by entering the PIN Code after authenticating 2 arbitrarily selected numbers. When the buttons for 2 arbitrarily selected numbers are illuminated, pressing the 2 illuminated buttons illuminates the whole touchscreen. You can enable or disable the Random Security function. This function is **enabled** by default.

Registration Button : This button is used to change Master PIN Code/User PIN Codes/User Cards or the lock settings. It is found below the battery cover of the Interior Unit. The length of time the **[Registration]** button is pressed varies depending on the function.

Resetting : Deletes all registered information and restores the factory default. After resetting, change the Master PIN Code for security.

Restart Button : This button resets the lock when the lock stops functioning. Registered information is not deleted.

Sound Setting : The volume during the input of numbers and opening or locking of the door can be set from Level 0 ~ Level 3. The sound is muted at Level 0 and is at maximum volume at Level 3. The registration mode operates at Level 2 regardless of the sound setting.

User Card : You can register up to 70 User Cards including the User PIN Codes. You can open the door with a User Card.

User/Management Number : It is the same number as the registered user's address and can be set from 1 to 70. The User Number should be managed with caution as it is used to register or delete User PIN Codes/Cards.

User PIN Code : You can register up to 70 User PIN Codes (4-12 digits) including the User Cards. You can open the door with a User PIN Code.

Scope of Master, User Settings

Settings	Master	User
Opening the Door	✓	✓
Setting Up the Sound	✓	✓
Changing Master PIN Code	✓	
Registering User PIN Code/Card	✓	
Deletion of User PIN Code/Card	✓	
Setting the Locking Mode	✓	✓
Setting Out-of-home Security	✓	✓
Setting Double-locking	✓	✓
Setting Random Security	✓	✓
Factory Reset	✓	
Setting the Volume	✓	✓
Setting the Double Authentication Mode	✓	✓

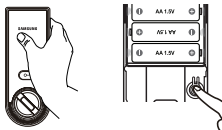
Factory Default

Function	Factory Default
Master PIN Code	1234
Volume	Level 2
User PIN Code/Card	None
Locking Mode	Auto
Out-of-home Security Function	Disabled
Double-locking	Disabled
Random Security	Enabled
Double Authentication Mode	Disabled

Programming User PIN Codes & User Cards

Note: Pressing the [Registration] button is only available while the door is open. (Deadbolt must be unlocked.) Maximum number of user registration is 70. (User PIN Codes, User Cards, Key Fobs)

Changing the Master PIN Code



Open the battery cover of the Interior Unit and press the [Registration] button briefly.
 Ding dong

1	2	3
4	5	6
7	8	9
*	0	Ⓜ

When the touchscreen is illuminated, enter the current Master PIN Code (default is '1234') and press the [*] button.
Successful: Ding dong
Failed: Ding dong ding dong

1	2	3
4	5	6
7	8	9
*	0	Ⓜ

Enter the new Master PIN Code and press the [*] button.
Successful: Ding dong ding
Failed: Ding dong ding ding
Note: Master PIN Code must be 4~12 digits.



Registering a User PIN Code



Open the battery cover of the Interior Unit and press the [Registration] button briefly.
 Ding dong

1	2	3
4	5	6
7	8	9
*	0	Ⓜ

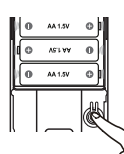
When the touchscreen is illuminated, enter the current Master PIN Code (default is '1234') and press the [*] button.
Successful: Ding dong
Failed: Ding dong ding dong

1	2	3
4	5	6
7	8	9
*	0	Ⓜ

Enter a User Number (1~70) to register the User PIN Code and press the [*] button.
 *Choose a User Number that has not already been used.
Successful: Ding dong
Failed: Ding dong ding dong

1	2	3
4	5	6
7	8	9
*	0	Ⓜ

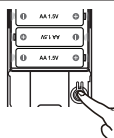
Enter a new User PIN Code and press [*] button.
Successful: Ding dong dang
Failed: Ding dong ding dong
Note: User PIN Code must be 4~12 digits.



Enter another User Number or press the [Registration] button to quit.



Registering a User Card



Open the battery cover of the Interior Unit and press the **[Registration]** button briefly.

🔊 Ding dong



When the touchscreen is illuminated, enter the current Master PIN Code (default is '1234') and press the **[*]** button.

Successful: 🔊 Ding dong

Failed: 🔊 Ding dong ding dong



Enter a User Number (1~70) to register the User Card code and press the **[*]** button.

* Choose a User Number that has not already been used.

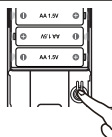
Successful: 🔊 Ding dong

Failed: 🔊 Ding dong ding dong



Touch the Card reader with the Card to register.

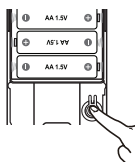
🔊 Ding dong dang



Enter another User Number or press the **[Registration]** button to quit.



Deleting User PIN Code / User Card



Open the battery cover of the Interior Unit and press and hold the **[Registration]** button for 5 seconds.

🔊 Ding dong → Ding ding



Enter the Master PIN Code and press the **[*]** button.

Successful: 🔊 Ding dong

Failed: 🔊 Ding dong ding dong



Enter the User Number (1 to 70) of the User PIN Code or Card to be deleted and press the **[*]** button.

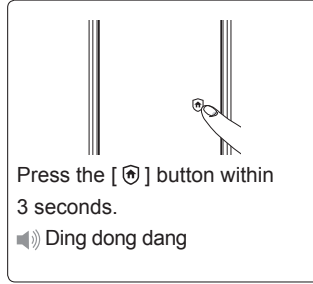
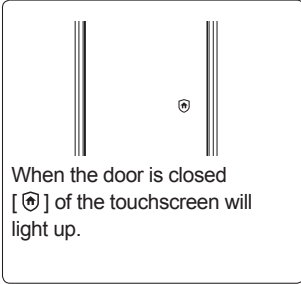
Successful: 🔊 Ding dong dang

Failed: 🔊 Ding dong ding dong

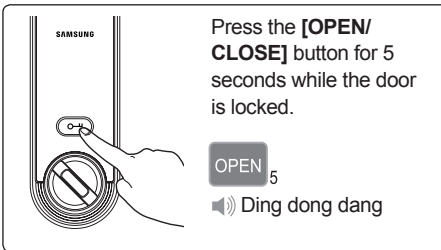


Security Functions

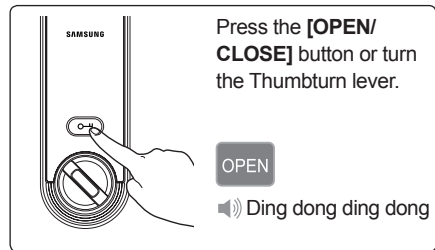
Setting the Out-of-Home Security Function



Setting Double-locking



Releasing Double-locking



Additional Functions

- 0 Mute *
- 1 Sound 1 *
- 2 Sound 2 *
- 3 Sound 3 *
- 4 Enable Double Authentication Mode *
- 5 Auto/Manual locking *
- 6 Disable Double Authentication Mode *
- 7 Enable Random Security *
- 9 Disable Random Security *

Miscellaneous

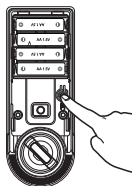
Miscellaneous Information

Reset to Factory Default

Resetting the lock will delete all registered information.

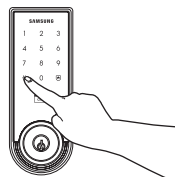
Note: After Reset, let the sensor detect the magnet to set the hand type again.

All registered Master and user data will be deleted, and the lock will be reset to default settings. (Refer to the Program section on Page 15 for default values.)



Press the **[Registration]** button for 10 seconds.

Successful: Ding dong → Ding ding
→Ding ding

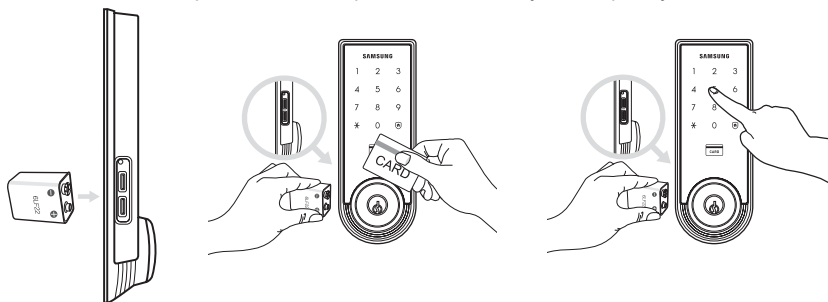


Enter the current Master PIN Code and press the **[*]** button.

Successful: Ding dong dang
Failed: Ding dong ding dong

9V Battery Emergency Power

Note: Please, be aware of that there has be more than 50mm gap between the door frame and the external power contact to place the 9V battery for temporary access.

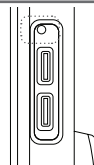


Continuing to use the lock without replacing the batteries when required will lead to lock malfunction. Touching a 9V DC battery to the external power contacts on the under-side of the Exterior Unit will allow for temporary access (continue touching the battery to the contacts until the lock is open).

Restart Function

Note: Restarting does not delete registered information.

If there is no response after touching the **[Touchscreen]**, use a pin to press the **[Restart]** button on the left of the external power contact of the Exterior Unit.



Troubleshooting

When the lock doesn't function correctly, please check the items below.

If you can't resolve the problem, please contact the nearest service center.

Problem	Resolution	Reference
There is no power.	<ul style="list-style-type: none"> • Check if the batteries are inserted in the correct polarity. • Check that the batteries have a full charge. • Check that the Exterior Unit cable has not come loose. 	-
I can't change the Master PIN Code.	<ul style="list-style-type: none"> • There was a delay while changing the PIN Code. The touchscreen must be illuminated when changing the PIN Code. Also, after entering the first digit, the next digit must be entered within 10 seconds. • Replace the batteries if they are discharged. • Refer to the 'Changing the Master PIN Code' section in the user manual and try again. Ensure that the Master PIN Code is 4~12 digits long. 	Page 16
I can't register the User PIN Code.	<ul style="list-style-type: none"> • The User Number has already been used. Delete the desired User Number and re-register. • Ensure that the User PIN Code is 4~12 digits long. 	Page 16
I can't register the User Card.	<ul style="list-style-type: none"> • The User Number has already been used. Delete the desired User Number and re-register. • Ensure that the card is touched to the card reader within 10 seconds of entering the User Number. 	Page 17
I entered the PIN Code and pressed the [*] button, but the door won't open.	<ul style="list-style-type: none"> • Check that the registered PIN Code was entered correctly. • If the touchscreen illumination turns off while entering the PIN Code, the button input was not registered. Touch the [Touchscreen] to illuminate the touchscreen and enter the PIN Code again from the beginning. (The touchscreen illumination is turned off automatically if there is no input within 5 seconds.) 	Page 16
I can't unlock the door with my Card.	<ul style="list-style-type: none"> • The Card is either unregistered or unrecognized. • The Card must touch the Card reader correctly. 	Page 17
I can't unlock the door with my PIN Code or Card.	<p>Check if the Double-locking function has been enabled. When this function is enabled, the lock will not open with a PIN Code or Card. Touch the [Touchscreen] when the Double-locking function is enabled causes the lock to emit a 'Too~t, too~t' sound.</p>	Page 18

<p>My PIN Code or Card is authenticated, but the door won't open.</p>	<p>The lock may be malfunctioning. Please contact service center.</p>	<p>-</p>
<p>The door won't lock automatically when I close it.</p>	<ul style="list-style-type: none"> ● Check if Auto Locking is set. When Manual Locking is set, touching the [Touchscreen] locks the door. ● If the door doesn't lock automatically when Auto Locking is set, then the lock has been installed incorrectly. ● The Auto Locking function is not activated when the batteries are completely discharged. Check if the batteries are discharged. 	<p>Page 18</p>
<p>I hear the "Too~~t, too~~t" warning sound when I touch the [Touchscreen].</p>	<p>When the Double-Locking function is enabled, touching the [Touchscreen] issues this warning sound. Check if Double-locking is enabled, disable the function and try again.</p>	<p>Page 18</p>
<p>The lock issues a different melody (Fur Elise) when I activate it.</p>	<p>The sound indicates that it is time to replace the batteries. Replace with new batteries within a week.</p>	<p>Page 13</p>
<p>There is no response when I touch the [Touchscreen].</p>	<ul style="list-style-type: none"> ● Use a pin to press the hole on the right of the external power contact of the Exterior Unit. ● If doing the above does nothing, contact the service center. 	<p>Page 19</p>

Product Specifications

Item	Specifications	
Voltage	4 AA Alkaline 1.5V Batteries (LR6) (6V)	
Emergency Power Source	9V Battery (6LF22) (not included)	
Operation Method	Electronic Control Method (PIN Code entry or Card reading)	
Weight	1.8Kg (including both inside and Exterior Unit)	
Product Dimensions	Exterior Unit	68.0 mm (W) x 180.0 mm (H) x 36.5 mm (D)
		2-11/16" inch (W) x 7-3/32" inch (H) x 1-7/16" inch (D)
	Interior Unit	68.0 mm (W) x 180.0 mm (H) x 38.3 mm (D)
		2-11/16" inch (W) x 7-3/32" inch (H) x 1-1/2" inch (D)

The content of this manual is subject to change without prior notice to the user in order to enhance the performance of the product.

FCC NOTICE

NOTE : This equipment has been tested and found to comply with the limits for a Class B digital device, pursuant to part 15 of the FCC Rules. These limits are designed to provide reasonable protection against harmful interference in a residential installation.

This equipment generates, uses and can radiate radio frequency energy and, if not installed and used in accordance with the instructions, may cause harmful interference to radio communications. However, there is no guarantee that interference will not occur in a particular installation. If this equipment does cause harmful interference to radio or television reception, which can be determined by turning the equipment off and on, the user is encouraged to try to correct the interference by one or more of the following measures:

- Reorient or relocate the receiving antenna.
- Increase the separation between the equipment and receiver.
- Connect the equipment into an outlet on a circuit different from that to which the receiver is connected.
- Consult the dealer or an experienced radio/TV technician for help.

CAUTION : Changes or modifications not expressly approved by the manufacturer responsible for compliance could void the user's authority to operate the equipment.

LIMITED PRODUCT WARRANTY

Installation of the product is considered acceptance of warranty conditions

SAMSUNG SDS CO., LTD (SAMSUNG SDS) warrants its products to be free from manufacturing defects in materials and workmanship for 12 months from the date of purchase. SAMSUNG SDS will, within said period, at its option, repair or replace any product failing to operate correctly without charge to the original purchaser or user.

This warranty shall not apply to any equipment, or any part thereof, which has been repaired by others, improperly installed, improperly used, abused, altered, damaged, subjected to acts of God, or on which any serial numbers have been altered, defaced or removed. SAMSUNG SDS does not warrant the performance or sale conditions of the seller/installer.

There are no warranties, express or implied, which extend beyond the description on the face hereof. There is no express or implied warranty of merchantability of a warranty of fitness for a particular purpose. Additionally, this warranty is in lieu of all other obligations or liabilities on the part of SAMSUNG SDS.

Any action for breach of warranty, including but not limited to any implied warranty of merchantability, must be brought within the six months following the end of the warranty period. In no case shall SAMSUNG SDS be liable to anyone for any consequential or incidental damages for breach or this or any other warranty, express or implied, even if the loss or damage is caused by the seller's own negligence or fault.

SAMSUNG SDS shall have no obligation under this warranty, or otherwise, if the product has been repaired by others, improperly installed, improperly used, abused, altered, damaged, subjected to accident, nuisance, flood, fire or acts of God, or on which any serial numbers have been altered, defaced or removed. SAMSUNG SDS and its distributor will not be responsible for any dismantling, reassembly or reinstallation charges. This warranty contains the entire warranty. It is the sole warranty and any prior agreements or representations, whether oral or written, are either merged herein or are expressly cancelled. SAMSUNG SDS neither assumes, nor authorizes any other person purporting to act on its behalf to modify, to change, or to assume for it, any other warranty or liability concerning its products. In no event shall SAMSUNG SDS be liable for an amount in excess of SAMSUNG SDS's original selling price of the product, for any loss or damage, whether direct, indirect, incidental, consequential, or otherwise arising out of any failure of the product. Seller's warranty, as hereinabove set forth, shall not be enlarged, diminished or affected by and no obligation or liability shall arise or grow out of Seller's rendering of technical advice or service in connection with Buyer's order of the goods furnished hereunder.

SAMSUNG SDS recommends that the entire system be completely tested weekly.

Warning: Despite frequent testing, and due to, but not limited to, any or all of the following; criminal tampering, electrical or communications disruption, it is possible for the system to fail to perform as expected. SAMSUNG SDS does not represent that the product/system may not be compromised or circumvented; or that the product or system will prevent any personal injury or property loss by burglary, robbery, fire or otherwise; nor that the product or system will in all cases provide adequate warning or protection. A properly installed and maintained alarm may only reduce risk of burglary, robbery, fire or otherwise but it is not insurance or a guarantee that these events will not occur.





Consequently, seller shall have no liability for any personal injury, property damage, or other loss based on a claim the product failed to give warning.

Therefore, the installer should in turn advise the consumer to take any and all precautions for his or her safety including, but not limited to, fleeing the premises and calling police or fire department, in order to mitigate the possibilities of harm and/or damage. SAMSUNG SDS is not an insurer of either the property or safety of the user's family or employees, and limits its liability for any loss or damage including incidental or consequential damages to SAMSUNG SDS's original selling price of the product regardless of the cause of such loss or damage.

Some states do not allow limitations on how long an implied warranty lasts or do not allow the exclusion or limitation of incidental or consequential damages, or differentiate in their treatment of limitations of liability for ordinary or gross negligence, so the above limitations or exclusions may not apply to you. This Warranty gives you specific legal rights and you may also have other rights which vary from state to state.

In case of the product defect, contact our authorized Customer Service Center. In order to exercise the warranty, you must contact our authorized Customer Service Center and obtain a proper RMA # - the product must be returned to our authorized Customer Service Center at user's shipping expense and the replacement product will be shipped back at our expense.

For product service, the product in all cases must be accompanied by below warranty form. Customer must ask the reseller or installer to fill out the warranty form indicated below, otherwise the product warranty may be considered void.

Visit our website at www.samsungsds-nss.com/en and go to Support menu to find the contact information of our worldwide distributors.

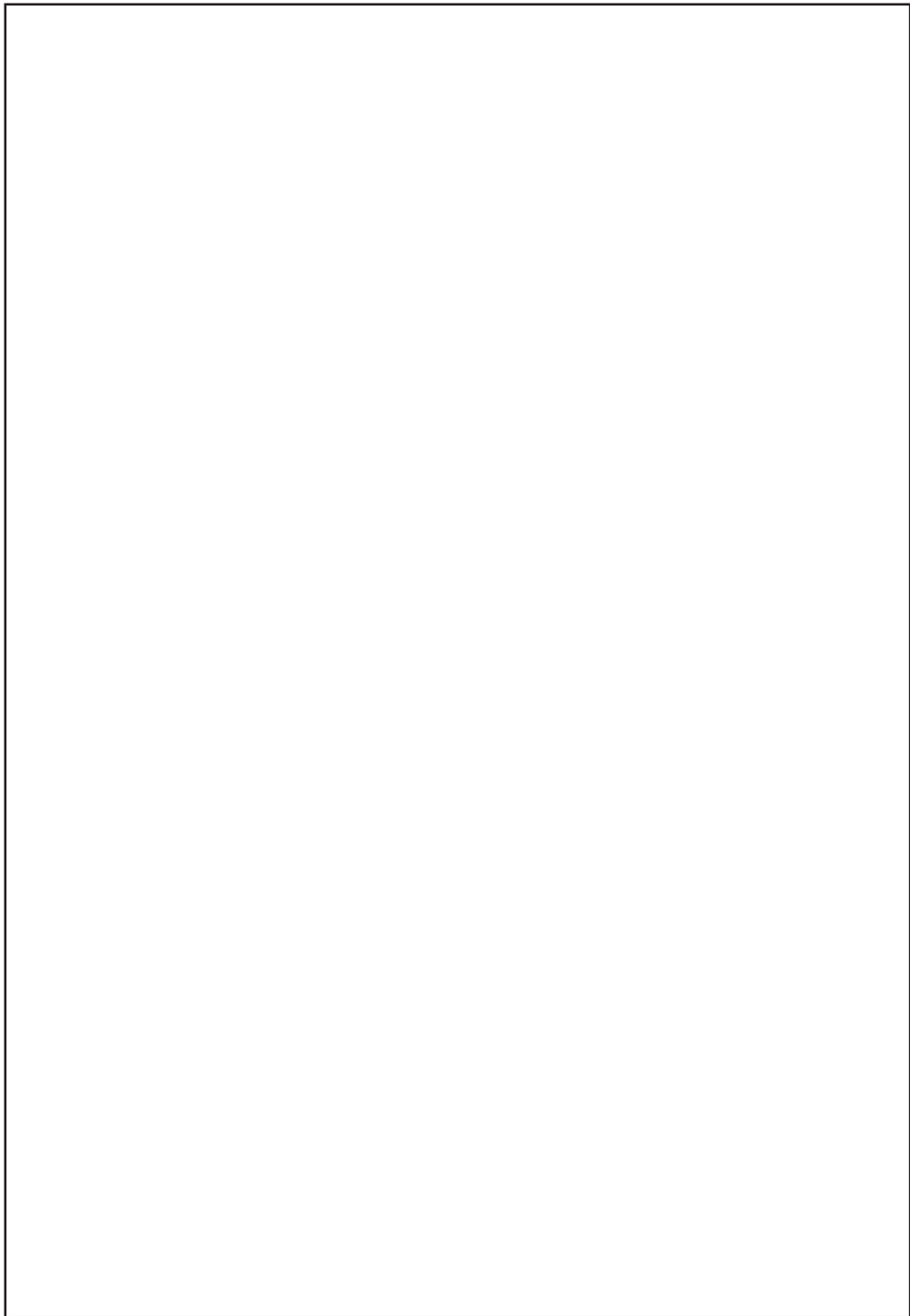
Date of Purchase or Installation : _____ (MM/DD/YY)

Name, telephone and full address of purchaser : _____

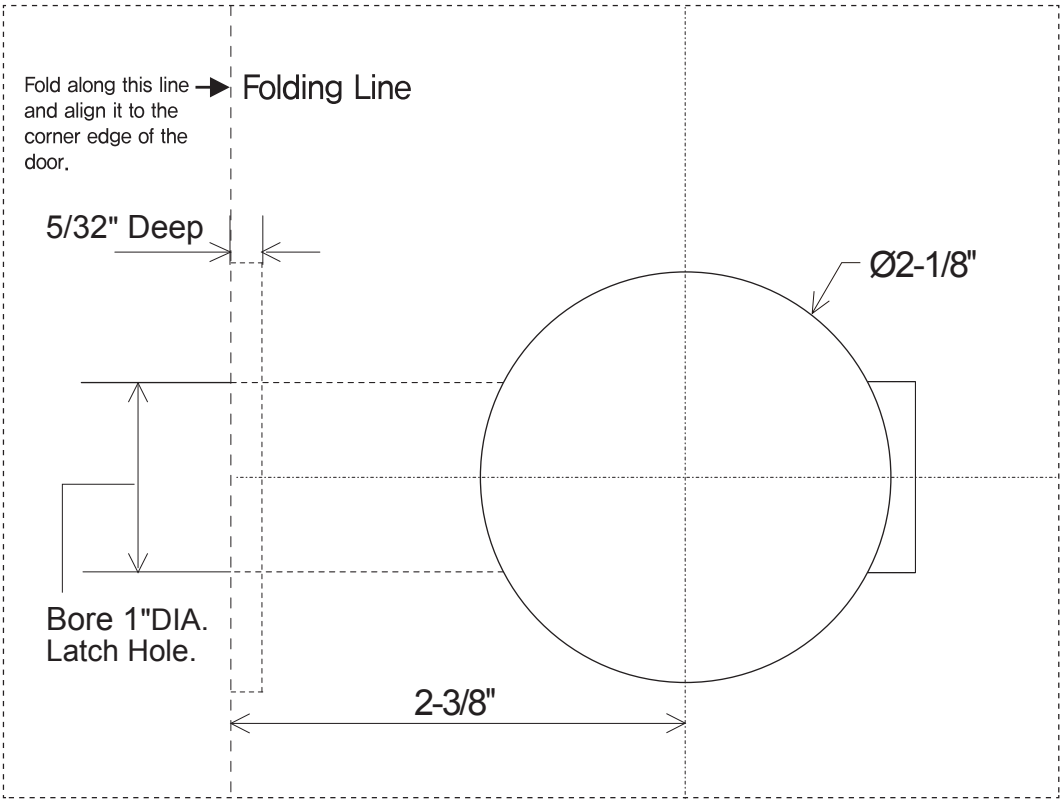
Stamp or Signature of authorized reseller / installer

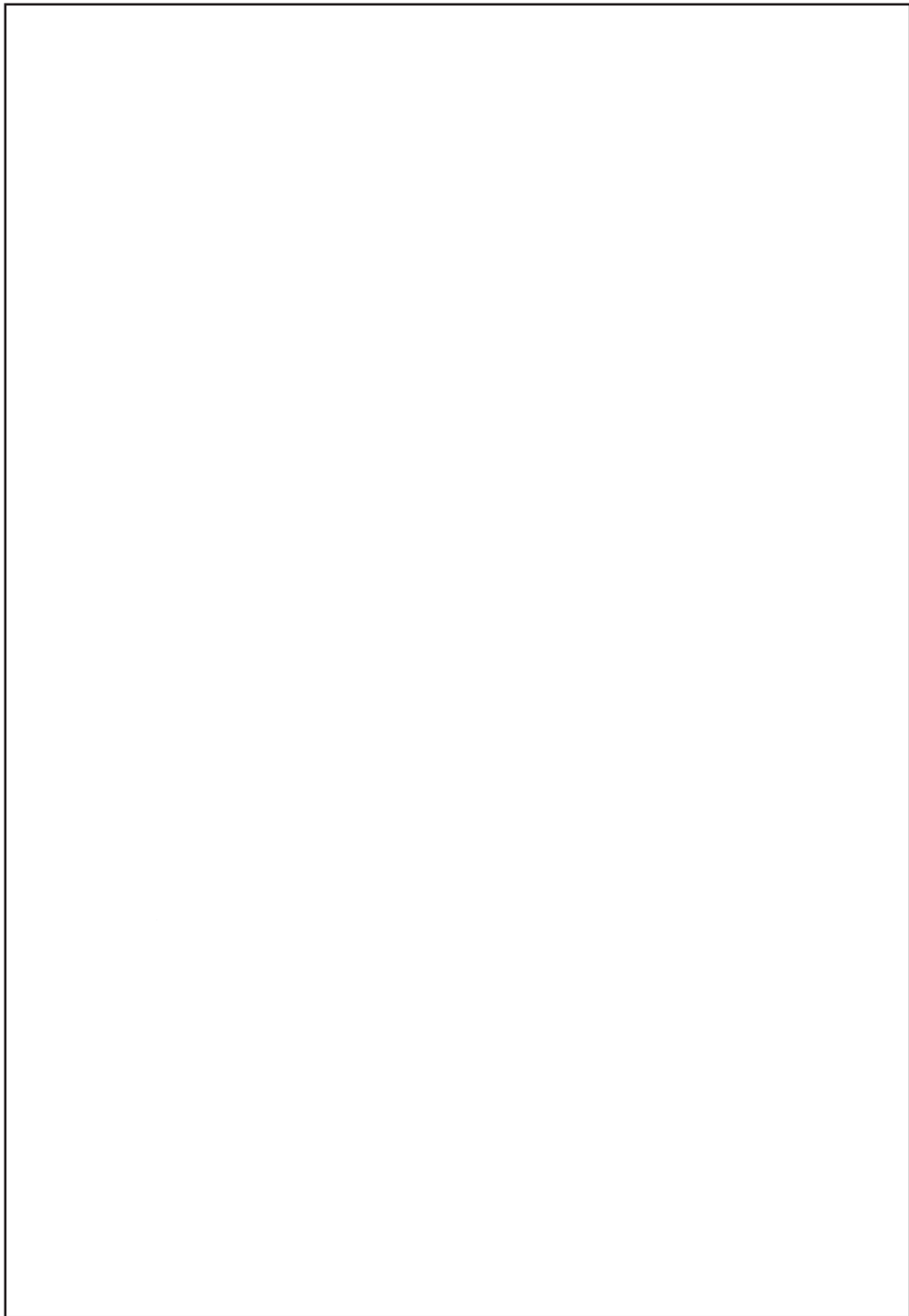
Product Code and Serial Number :



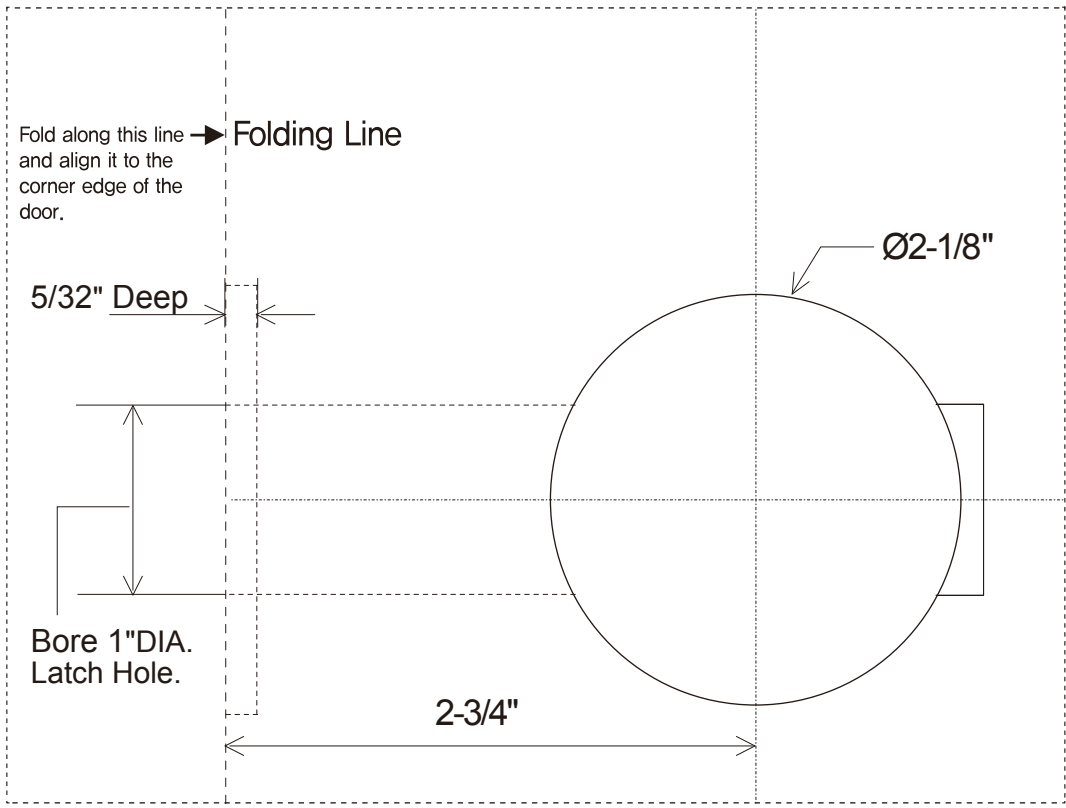


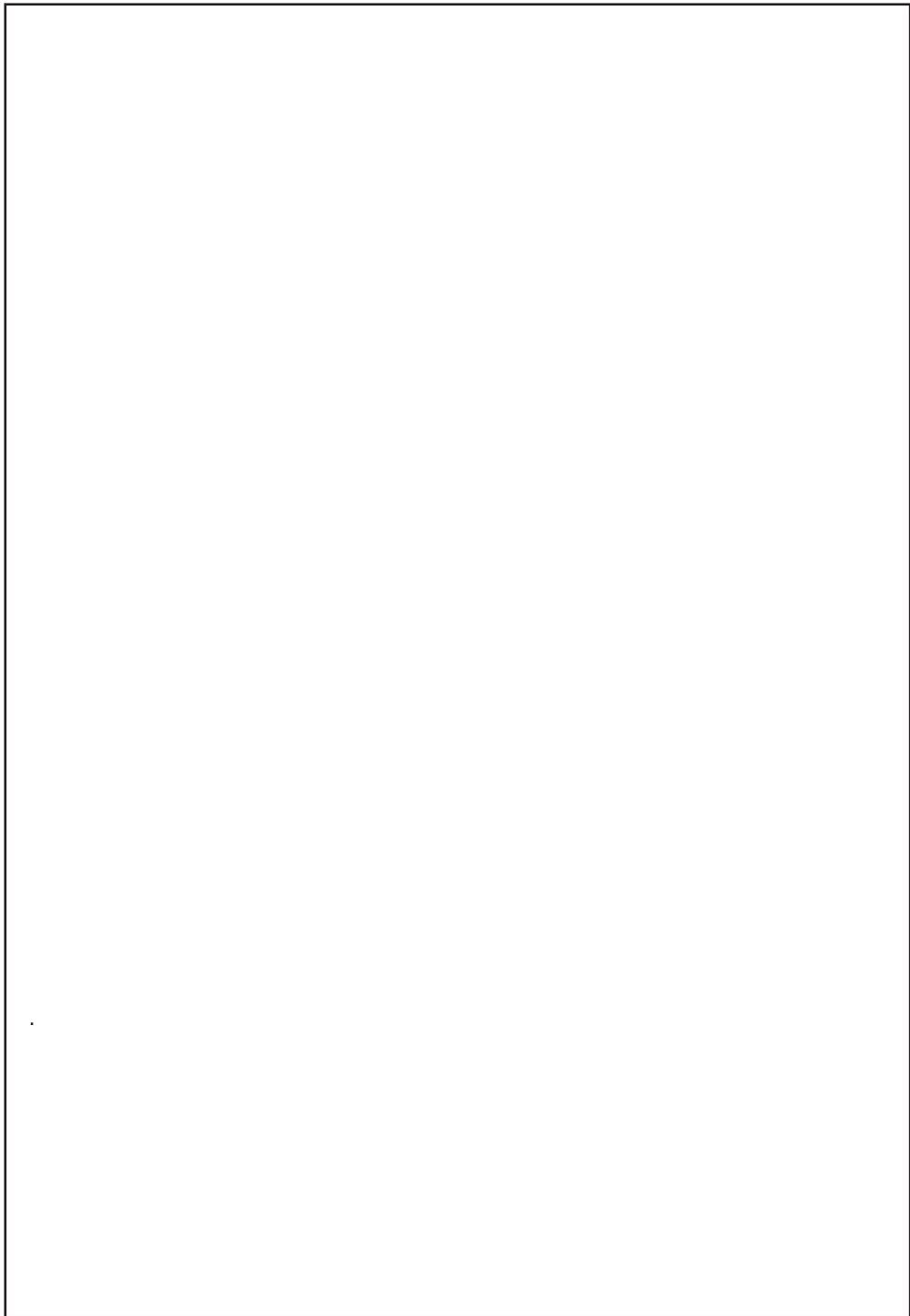
Drilling Template Sheet : 2-3/8" (60mm) Backset

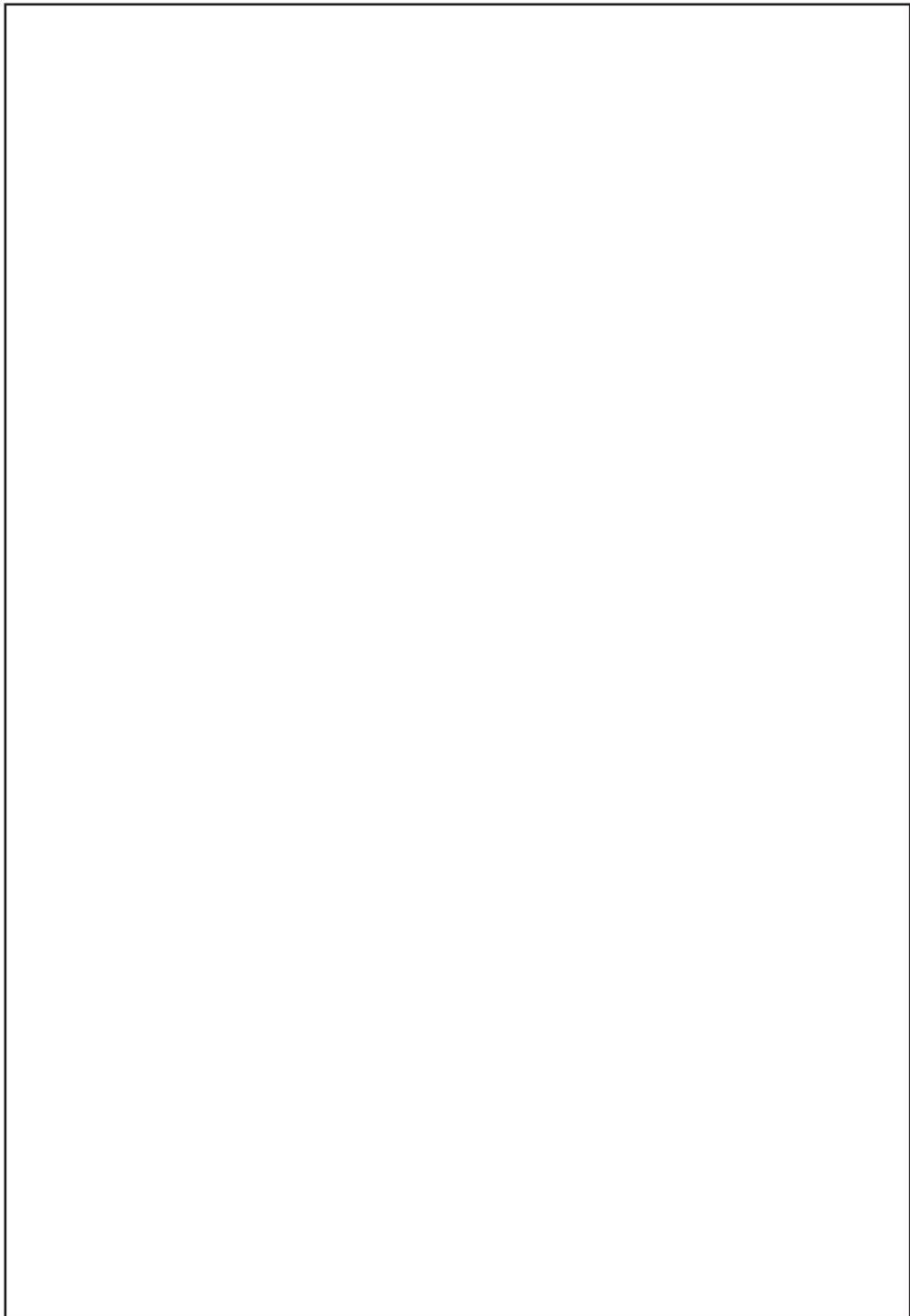


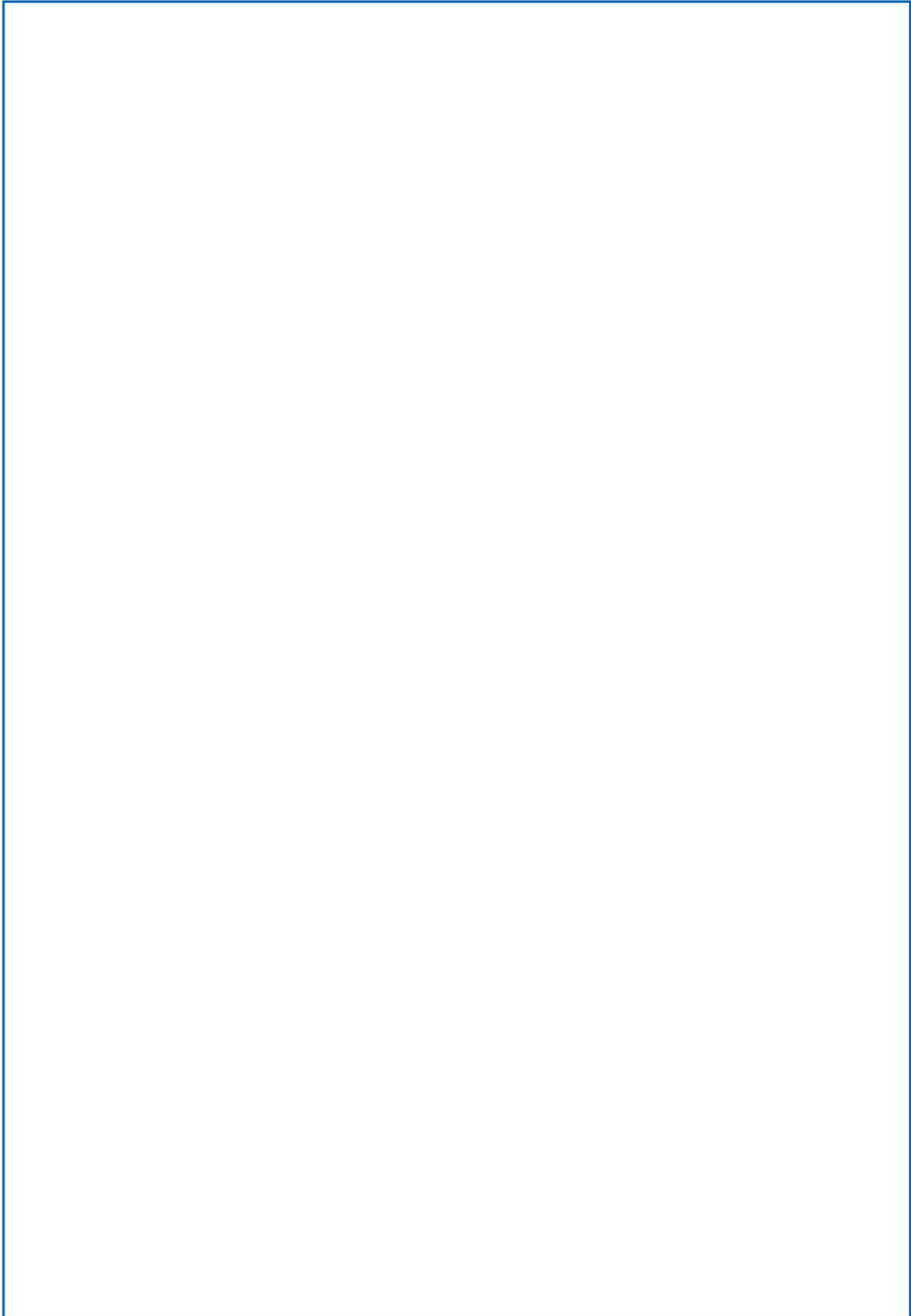


Drilling Template Sheet : 2-3/4"(70mm) Backset









Product information and customer service contact

SAMSUNG SDS

SAMSUNG SDS Co.,Ltd., reserves the right to change availability of any item in this catalog, its design, construction, and/or its materials.

Copyright © 2011, SAMSUNG SDS Co.,Ltd. All right reserved.

Reproduction in whole or in part without the express written permission of SAMSUNG SDS is prohibited.