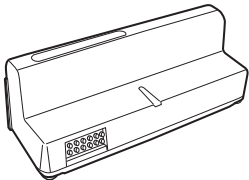




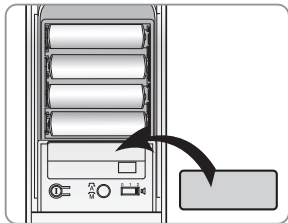
## Yale Zwave S2 security Module installation & Programming instructions

### Installing the Z-Wave<sup>®</sup> Module



**Important:** The batteries **must** be removed prior to removing and/or inserting the network module:

- Remove battery cover.
- Remove batteries.
- Remove and/or insert network module.
- Reinstall batteries.
- Replace cover.



## To register the module(Normal mode)

- 1) Enter the User code.
- 2) Press Registration( **I** or **R** ) button(after removing the battery cover).
- 3) Enter "☹ - # - 1 - #".
- 4) Register the module to controller and Enter "#" button. Enter Registration( **I** or **R** )button.



## To delete the module(Normal mode)

- 1) Enter the User code.
- 2) Press Registration( **I** or **R** ) button(after removing the battery cover).
- 3) Enter "☹ - # - User code - #".
- 4) Enter Registration( **I** or **R** )button.



Caution

Changes or modifications to this device, not expressly approved by Yale Security Inc. could void the user's authority to operate the equipment.