



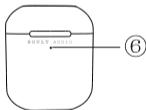
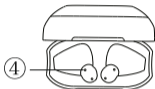
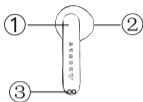
**BOULT AUDIO**

# **Boult Audio X1 Buds User Manual**

For better sound quality experience, suggest use  
IOS 8.0/ Android 4.3 or above operating system.

## Product Picture

---



- |                       |                                |
|-----------------------|--------------------------------|
| ① Smart finger touch  | ④ Case Charging point for Pods |
| ② Earbuds sounds hole | ⑤ Type-C charging port         |
| ③ Pods Charging point | ⑥ Charging LED Indicator       |

## Power On

---

1. Take the earbuds out of case, they will automatically turn on and pair with each other.



2. Long press for 2s to power on, if the case is not at hand.



## Power Off

---

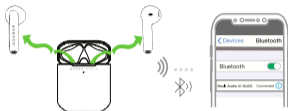
1. Earbuds will automatically turn off and enter charging mode when they are placed in the case.
2. Disconnecting the Bluetooth from device and laying the earbuds down for 3 mins will turn them off.



## Pairing

---

For the first time pairing, take the earbuds out of case and search bluetooth "Boult Audio Airbass" on your cell phone, and tap to connect.



Regular use:

Once next use, the earbuds will automatically connect with a preconnected device.

## Clear to pairing

---

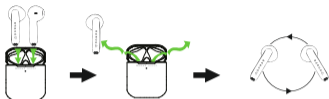
**Clear the pairing record of earbuds and mobile phones:**

Take out the earbuds from the charging case, and touch the left and right earbud 5 times, it will clear the record of the Bluetooth device, Then search for the Bluetooth name "Boult Audio Airbass" to pair.



## Resume pairing of left and right earbuds:

Put earbuds in the charging case and charge, then take earbuds out of the charging case when they are charged a few minutes. they will enter into pairing mode automatically.



- Put in the charging case and charge them
- Take out of charging case
- Pairing automatically

## Charging

---

### Earbuds:

Put earbuds into charging case, and they will be charged automatically. (LED green indicate flashes once you put earbuds right place.)



## Charging Case:

Plug the attached Type-C cable in the Computer or charger, the green light indicator flashes when the charging case is being charged, and will keep green light after being fully charged.



### Battery of Charging case

Indicator Light	Battery Status
One Flash	0-25%
Two Flash	26-50%
Three Flash	51-75%
Four Flash	76-99%
Green light on	100%

## Note:

Please charge for the case with DC5V/1A charger or Computer USB; As the charging and discharging of the earphones increases, the battery performance will decrease, which is normal for all rechargeable batteries (Don't press the contact of the spring pin hard to avoid improper use.)

# Functional Operation

---

## Playing/Pause music

1. Play/pause: 1 Tap on R & L earbuds MFT.
2. The previous song: 2 Tap on L earbuds MFT.
3. The next song: 2 Tap on R earbuds MFT.



## Calling

1. Answering Calls: 1 Tap on R & L earbuds MFT.
2. End the call: 2 Tap on R & L earbuds MFT.
3. Reject the calls: 2 Tap on R & L earbuds MFT.



## Voice assistant :

Voice assistant: 3 Second Long press on R & L earbuds MFT  
(One Beeps)



**Tips:**

1. The Volume can be adjusted by the phone. Please use the earbud in reasonable volume and time, otherwise it will damage your hearing if you listen the music for long time in high volume.
2. In the Mono mode, double click the earbud only for next song.

**Specification**

---

Bluetooth version	V5.1
Support profile	A2DP/AVRCP/HFP/HSP
Transmission distance	10M
Frequency range	2402MHz~2480MHz
Driver	φ13MM*2 Hi-Fi Speaker
Earbud charging time	About 1H
Charging case charging time	About 1H
Support system	iOS/Android/Windows
Certification	CE/FCC/RoHS



## **Attention**

---

1. Do not remove or refit earbuds for any reason, otherwise it will lead to headset damage and burn. These are not covered by warranty.
2. Do not touch the earbuds in corrosive liquid, otherwise it will cause serious damage. The Manufacturer will not guarantee the damage caused under this situation.
3. Do not put the equipment under too high or too low temperature (Below 0C or above 45C).
4. Please avoid approaching the eyes of children or animals when using equipment lights.
5. Do not use equipment in the thunderstorm weather. Thunderstorms may cause abnormal equipment operation and increase the risk of electric shock.
6. Due to the limit of the environment & connection distance for the bluetooth products, do not use our earbuds in large electromagnetic interference and radiation environment.
7. While driving, try to avoid using earbud to listen to music, make or receive calls, so as not to distract from danger.

## **Warning**

---

This product contains a built-in lithium battery. Please do not expose this product to strong sunlight, roasting or throwing it into the fire, as they may explode.