



Verelabs

Denver, CO 80223
 jj@verelabs.com
 1-720-572-9944

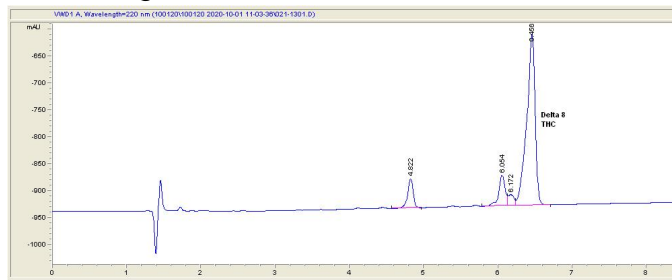
Sample 179-100120-009

VL-Delta 8 THC cartridge 1
 Sample Submitted: 10-01-2020; Report Date: 10-01-2020

VL-Delta 8 THC cartridge 1

Extract

Chromatogram



Cannabinoid Profile



Cannabinoid Profile by HPLC

0.00%
 Calculated THC Yield

0.00%
 Calculated CBD Yield

91.10%
 Total Cannabinoids

Cannabinoid	% wt	mg/g
Delta-8-THC	91.1	911.0
THC	0.0	0.0
Total Cannabinoids	91.10	911.0
Calculated THC Yield	0.00	0.00
Calculated CBD Yield	0.00	0.00
Calculated Maximum THC Yield = THC + 0.877 * THCA		
Calculated Maximum CBD Yield = CBD + 0.877 * CBDA		

Marin Analytics, LLC

250 Bel Marin Keys Blvd, Suite D4
 Novato, CA 94949

415-936-6477 / Support@MarinAnalytics.com

Sara Biancalana
Sara Biancalana
 Chief Scientist

This sample has been tested by Marin Analytics, LLC using valid testing methodologies and a quality system. Values reported relate only to the sample tested. Marin Analytics, LLC makes no claims as to the efficacy, safety or other risks associated with any detected or non-detected levels of any compounds reported herein. This Certificate shall not be reproduced except in full, without the written approval of Marin Analytics, LLC.



Cart-ology 403H-63693

Submitted: 6/23/2020

Reported: 6/24/2020

Sample ID: 20R-1681-01

Matrix: HPC

Batch ID:

Metrc ID: 1A4000D0001CCF3000000034

Contact: JJ Coombs, jj@verelabs.com

Con-1

Residual Solvents Report

	Limit of Detection (ppm)	MED Limit (ppm)	Test Result (ppm)	Status
Acetone	17.3	1000	None Detected	PASS
Benzene	0.9	2	None Detected	PASS
Butanes	118	1000	None Detected	PASS
Ethanol	17.2	1000	None Detected	PASS
Methanol	13.7	600	None Detected	PASS
Hexane	2.6	60	None Detected	PASS
Ethyl Acetate	18.2	1000	None Detected	PASS
Isopropyl Alcohol	17.2	1000	None Detected	PASS
Pentane	17.6	1000	None Detected	PASS
Propane	89.2	1000	None Detected	PASS
Toluene	4.7	180	None Detected	PASS
Xylenes	25.1	430	None Detected	PASS
Heptane	17.8	1000	None Detected	PASS
Overall Result				PASS

COMMENTS

Matrices

FL = Flower HP = Hemp ED = Edible TP = Topical CN = Concentrate RCN = Remediated Concentrate
 HIP = Hemp Infused Product HPC = Hemp Concentrate

These results relate solely to the sample tested.

Testing conducted between the date that the sample was received and the date that the results were reported.

Analyzed by GC-FID at Denver Lab. Report authorized by Lab Director or designee.

ASL warrants that all work performed conforms to the industry standards in effect for cannabis when services are rendered. ASL disclaims any implied warranties, except where such a disclaimer is prohibited by law, including any warrant of merchantability or fitness for a particular purpose.

PharmLabs San Diego Certificate of Analysis

3421 Hancock St, Second Floor, San Diego, CA 92110 | License: C8-000098-LIC
 ISO/IEC 17025:2005 Certification L17-427-1 | Accreditation #85368



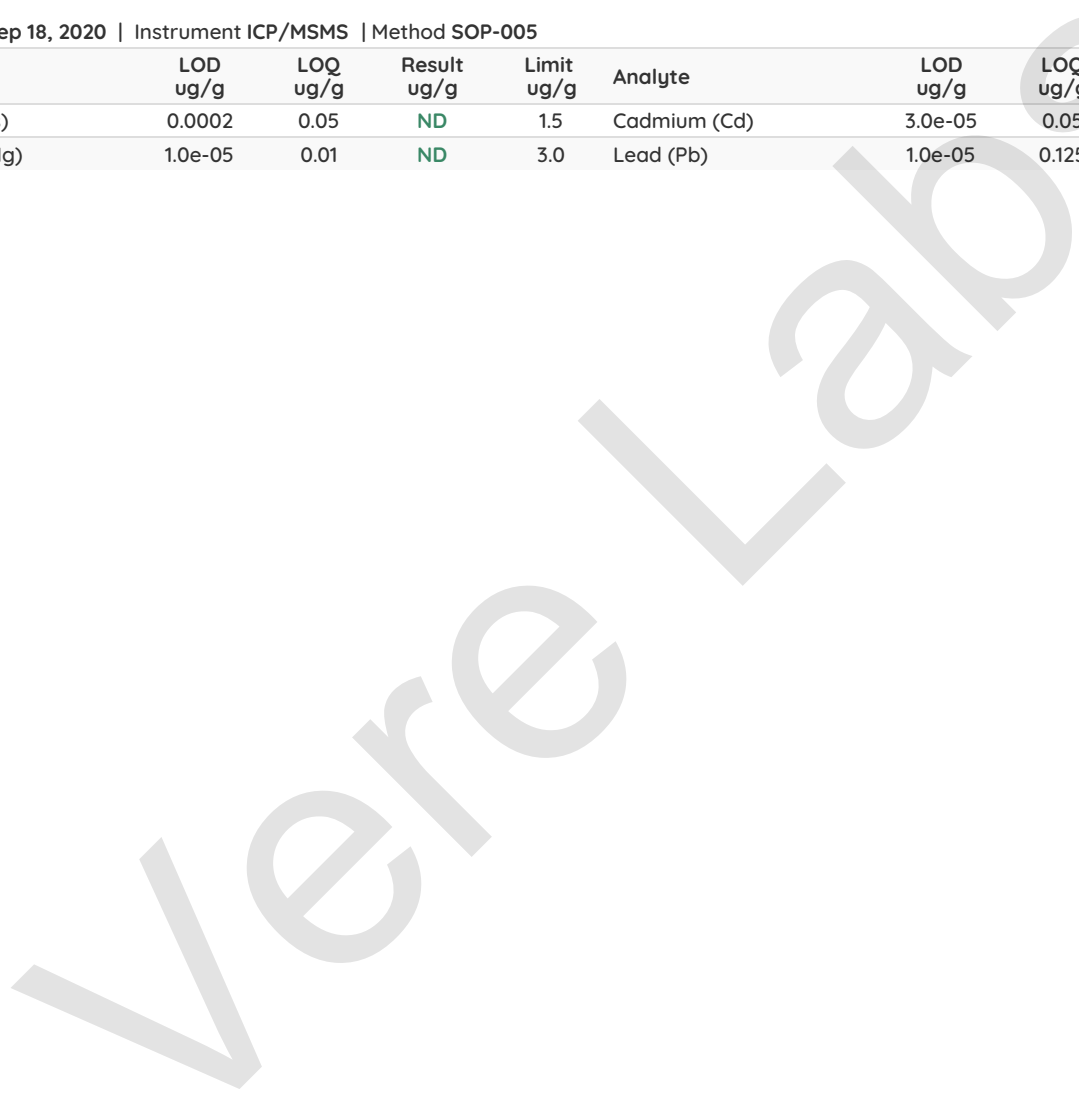
Sample **VL-S1-Clear**

Sample ID	SD200918-007 (39417)	Matrix	Distillate - NI (Other Cannabis Good)
Tested for	Vere Labs		
Sampled	-	Received	Sep 17, 2020
		Reported	Sep 18, 2020
Analyses executed	PES, HME, FVI		

HME - Heavy Metals Detection Analysis

Analyzed Sep 18, 2020 | Instrument ICP/MSMS | Method SOP-005

Analyte	LOD ug/g	LOQ ug/g	Result ug/g	Limit ug/g	Analyte	LOD ug/g	LOQ ug/g	Result ug/g	Limit ug/g
Arsenic (As)	0.0002	0.05	ND	1.5	Cadmium (Cd)	3.0e-05	0.05	ND	0.5
Mercury (Hg)	1.0e-05	0.01	ND	3.0	Lead (Pb)	1.0e-05	0.125	ND	0.5



ND Not Detected
 N/A Not Applicable
 NT Not Reported
 LOD Limit of Detection
 LOQ Limit of Quantification
 <LOQ Detected
 >ULOL Above upper limit of linearity
 CFU/g Colony Forming Units per 1 gram
 TNTC Too Numerous to Count



Scan the QR code to verify authenticity.

Authorized Signature

Dr. Lia Prevedello, Laboratory Director
 Fri, 18 Sep 2020 15:22:38 -0700

PES - Pesticides Screening Analysis

Analyzed Sep 18, 2020 | Instrument LC/MSMS GC/MSMS | Method SOP-003

Analyte	LOD ug/g	LOQ ug/g	Result ug/g	Limit ug/g	Analyte	LOD ug/g	LOQ ug/g	Result ug/g	Limit ug/g
Aldicarb	0.025	0.1	ND	0.025	Carbofuran	0.025	0.1	ND	0.025
Dimethoate	0.025	0.1	ND	0.025	Etofenprox	0.025	0.1	ND	0.025
Fenoxycarb	0.025	0.1	ND	0.025	Thiacloprid	0.025	0.1	ND	0.025
Daminozide	0.025	0.1	ND	0.025	Dichlorvos	0.025	0.1	ND	0.025
Imazalil	0.025	0.1	ND	0.025	Methiocarb	0.025	0.1	ND	0.025
Spiroxamine	0.025	0.1	ND	0.025	Coumaphos	0.025	0.1	ND	0.025
Fipronil	0.025	0.1	ND	0.025	Paclbutrazol	0.025	0.1	ND	0.025
Chlorpyrifos	0.025	0.1	ND	0.025	Ethoprophos (Prophos)	0.025	0.1	ND	0.025
Baygon (Propoxur)	0.025	0.1	ND	0.025	Chlordane	0.025	0.1	ND	0.025
Chlorfenapyr	0.025	0.1	ND	0.025	Methyl Parathion	0.025	0.1	ND	0.025
Mevinphos	0.025	0.1	ND	0.025	Abamectin	0.025	0.05	ND	0.3
Acephate	0.025	0.05	ND	5	Acetamiprid	0.025	0.05	ND	5
Azoxystrobin	0.025	0.05	ND	40	Bifenazate	0.025	0.05	ND	5
Bifenthrin	0.025	0.05	ND	0.5	Boscalid	0.025	0.05	ND	10
Carbaryl	0.025	0.05	ND	0.5	Chlorantraniliprole	0.025	0.05	ND	40
Clofentezine	0.025	0.05	ND	0.5	Diazinon	0.025	0.05	ND	0.2
Dimethomorph	0.025	0.05	ND	20	Etoazole	0.025	0.05	ND	1.5
Fenpyroximate	0.025	0.05	ND	2	Fonicamid	0.025	0.05	ND	2
Fludioxonil	0.025	0.05	ND	30	Hexythiazox	0.025	0.05	ND	2
Imidacloprid	0.025	0.05	ND	3	Kresoxim-methyl	0.025	0.05	ND	1
Malathion	0.025	0.05	ND	5	Metalaxyl	0.025	0.05	ND	15
Methomyl	0.025	0.05	ND	0.1	Myclobutanil	0.025	0.05	ND	9
Naled	0.025	0.05	ND	0.5	Oxamyl	0.025	0.05	ND	0.2
Permethrin	0.025	0.05	ND	20	Phosmet	0.025	0.05	ND	0.2
Piperonyl Butoxide	0.025	0.05	ND	8	Propiconazole	0.025	0.05	ND	20
Prallethrin	0.025	0.05	ND	0.4	Pyrethrin	0.025	0.05	ND	1
Pyridaben	0.025	0.05	ND	3	Spinosad A	0.025	0.05	ND	3
Spinosad D	0.025	0.05	ND	3	Spiromesifen	0.025	0.05	ND	12
Spirotetramat	0.025	0.05	ND	13	Tebuconazole	0.025	0.05	ND	2
Thiamethoxam	0.025	0.05	ND	4.5	Trifloxystrobin	0.025	0.05	ND	30
Acequinocyl	0.025	0.05	ND	4	Captan	0.025	0.05	ND	5
Cypermethrin	0.025	0.05	ND	1	Cyfluthrin	0.025	0.05	ND	1
Fenhexamid	0.025	0.05	ND	10	Spinetoram J,L	0.025	0.05	ND	3
Pentachloronitrobenzene	0.025	0.05	ND	0.2					

FVI - Filth & Foreign Material Inspection Analysis

Analyzed Sep 18, 2020 | Instrument Microscope | Method SOP-010

Analyte / Limit	Result	Analyte / Limit	Result
> 1/4 of the total sample area covered by sand, soil, cinders, or dirt	Negative	> 1/4 of the total sample area covered by mold	Negative
> 1 insect fragment, 1 hair, or 1 count mammalian excreta per 3g	Negative	> 1/4 of the total sample area covered by an imbedded foreign material	Negative

ND Not Detected
 N/A Not Applicable
 NT Not Reported
 LOD Limit of Detection
 LOQ Limit of Quantification
 <LOQ Detected
 >ULOL Above upper limit of linearity
 CFU/g Colony Forming Units per 1 gram
 TNTC Too Numerous to Count



Scan the QR code to
verify authenticity.

Authorized Signature

Dr. Lia Prevedello, Laboratory Director
 Fri, 18 Sep 2020 15:22:38 -0700