

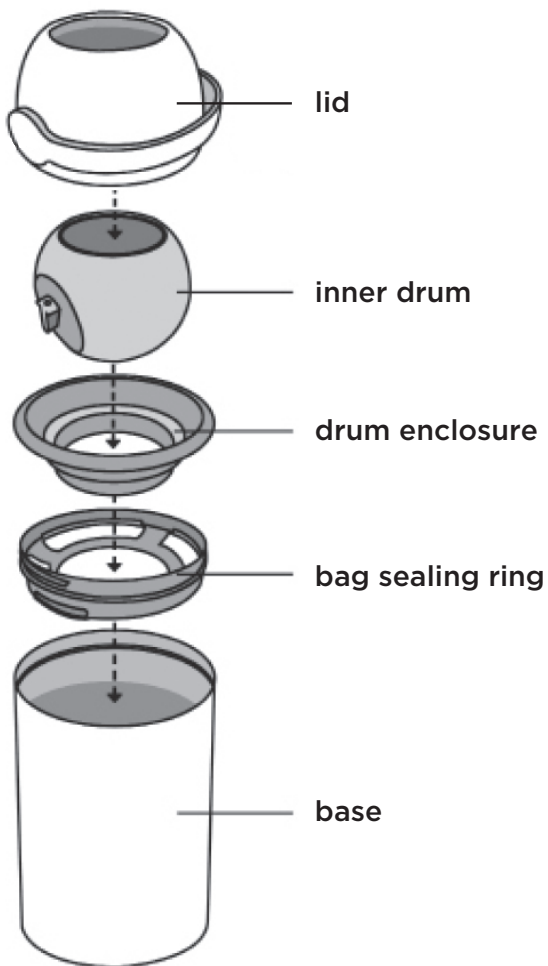


HYGIENE™

odour-trap™
nappy disposal system



COMPONENTS CHECKLIST

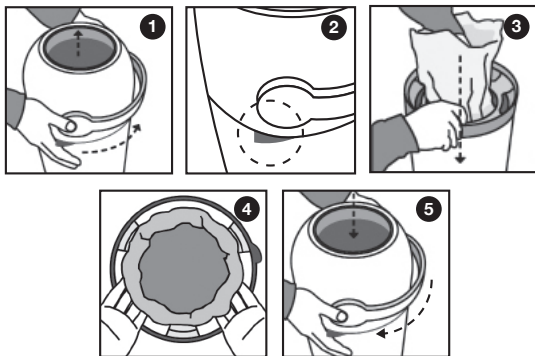


WARNING! INSTRUCTIONS FOR USE AND CARE. IMPORTANT, READ CAREFULLY AND RETAIN FOR FUTURE USE.

- Remove all packaging and keep all components out of the reach of children. THIS IS NOT A TOY.
- This product should only be used for the intended purpose for which it was designed, as a nappy disposal system. Any other use is considered improper and therefore dangerous.
- Wash the product once a week using a mild detergent.
- We recommend emptying the bin at least once every 2 days.
- Always use plastic bags which are free of damage and ensure that it is properly fixed inside the bag holder ring without it curling up or overlapping, otherwise odours may occur.
- Always keep the bin in the 'store' position when not in use. This is to prevent odours.
- Regular care and cleaning is essential to maintain peak working order of your nappy disposal system.
- Odours may occur if all components are not correctly secured and the bag is not correctly inserted.

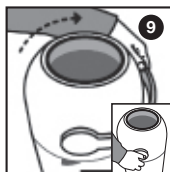
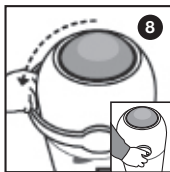
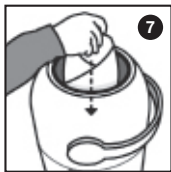
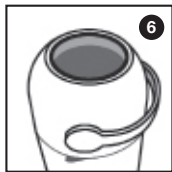
INSERTING THE BAG

1. Remove the lid by turning anti-clockwise, then lift the lid from the base (see image 1). When turning the lid, hold the tab in place to ensure that the bag sealing ring is secured to the base and isn't removed (see image 2).
2. Insert a large bin or carrier bag through the inner ring of the bag holder (see image 3).
3. Tuck the rim of the plastic bag (and handles if applicable) through the 3 outer holes of the bag sealing ring (see image 4).
4. Replace the lid back on to the base and secure by turning clockwise. The lid will click into place when secure (see image 5).



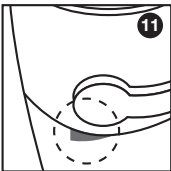
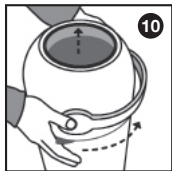
USING THE PRODUCT

1. Ensure the bin is in the 'store' position, and the hole of the inner drum should be facing upwards (see image 6). The bin should always be in this position when not in use.
2. Place the nappy into the inner drum (see image 7).
3. Rotate the inner drum by flipping the handle to the other side of the bin (see image 8).
4. Replace the lid to the store position by returning the handle over the bin, ensuring that the hole of the inner drum is facing upwards (see image 9).



REMOVING THE BAG

1. Remove the lid and bag sealing ring by turning anti-clockwise, then lift the lid from the base (see image 12). When turning the lid, push the tab (see image 13) to ensure that the bag sealing ring is removed with the lid.
2. To prevent odours escaping whilst you're removing the bag, hold the top of the bag and slowly pull to remove (see image 14).

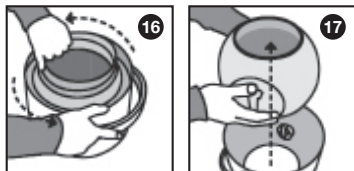
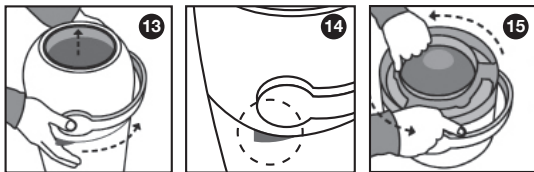


CLEANING AND CARE

- Clean all parts with warm, soapy water or a mild detergent.
- Do not use bleach, abrasives, antibacterial materials or scourers to clean the product.
- Do not store or leave in direct sunlight or near a source of heat as this could damage the product.
- Do not allow to come into contact with solvents or harsh chemicals, this could damage the product.

DISSASSEMBLY BEFORE CLEANING

1. Remove the lid and bag sealing ring by turning anti-clockwise, then lift the lid from the base (see image 13). When turning the lid, push the tab (see image 14) to ensure that the bag sealing ring is removed with the lid.
2. Flip the lid upside down and, using the tab, turn the bag sealing ring anti-clockwise and remove from the lid (see image 15).
3. Turn the drum enclosure anti-clockwise and remove from the lid (see image 16)
4. Lift the drum from the lid (see image 17).



www.vitalbaby.com

Made in China to Vital Baby® specifications.

Vital Innovations Limited, Hatfield, Herts, AL10 9EW, United Kingdom.

Vital Baby® is a registered trademark. HYGIENE™ and odour-trap™ are trademarks.

Patent Protected; Design Rights. © Vital Innovations Ltd 2019.