

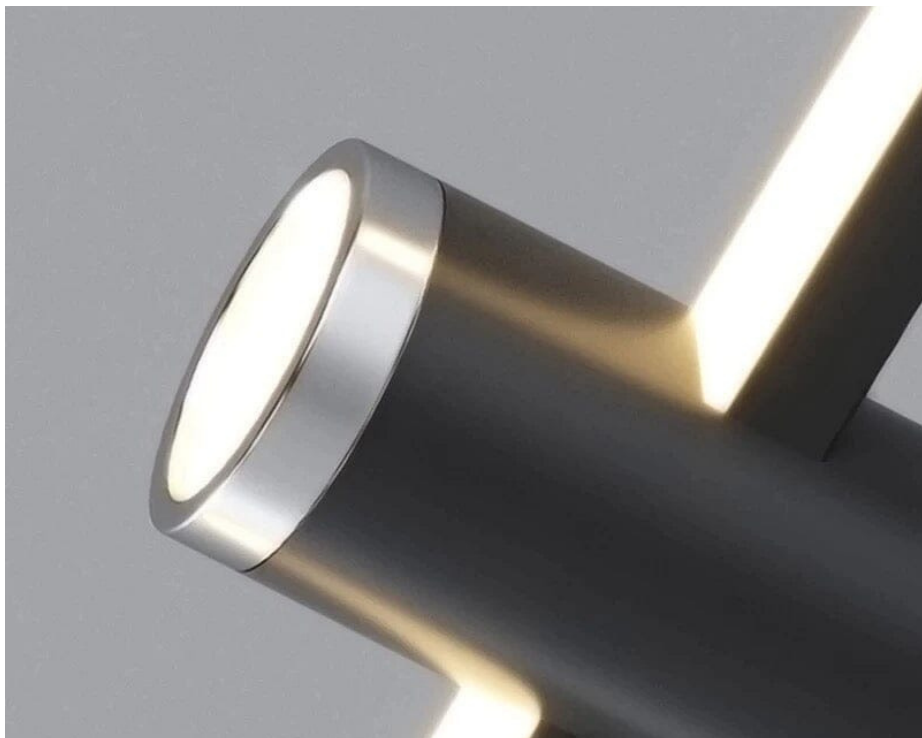
THE DUAL



Tel: +447375394309
www.nyralondon.com
info@nyralondon.com

NYRA
LONDON

Details on finishes



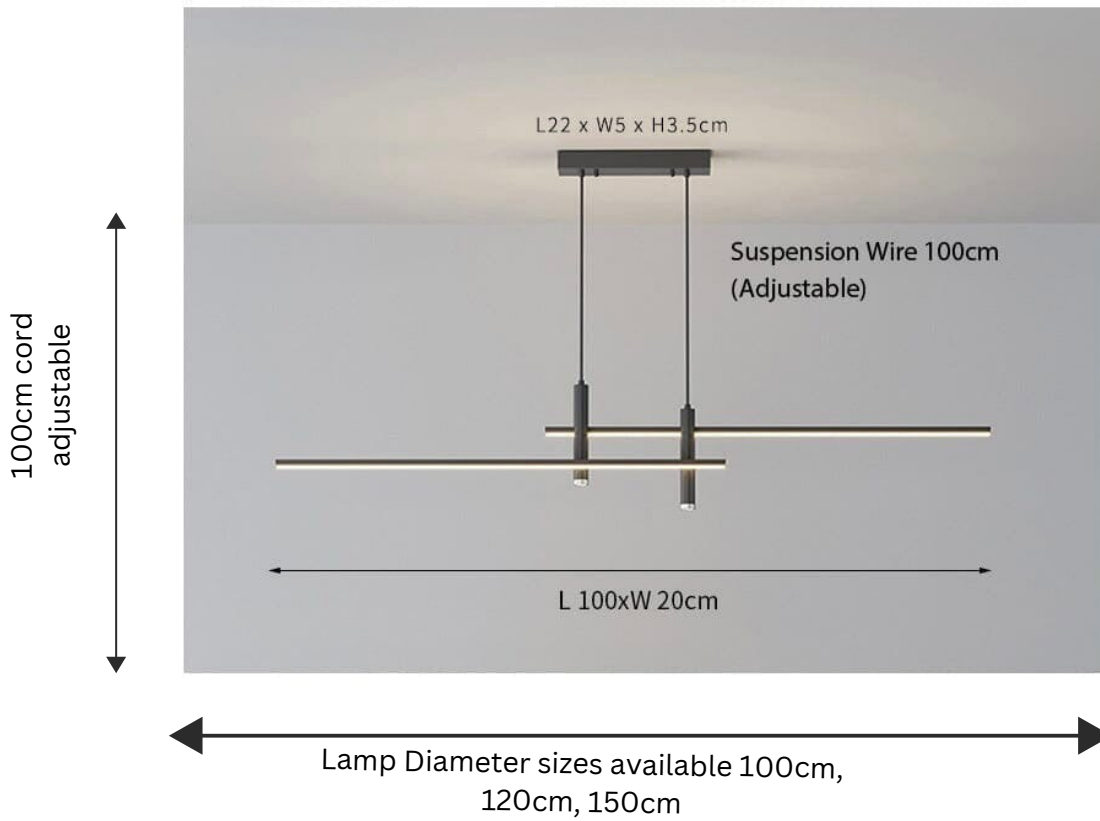
Bright high quality spotlight

High brightness concentrated light, restore the real color difference, protect eyes fine iron art, anti-corrosion and anti-rust, environmental protection and no pollution



Tel: +447375394309
www.nyralondon.com
info@nyralondon.com

SPECIFICATION SHEET



DESCRIPTION

Transform your dining room or kitchen with our sophisticated dual chandelier. Smooth in design, these two sword like pendants are the only showstoppers you need to transform your living space! Made from high quality iron and adjustable wiring so you can customise it to your size!

SPECIFICATION DETAILS

*For custom options, consult factory for details

Voltage: 90-260V

Shade Type: Aluminium and Acrylic

Power Source: AC

Light Source: LED Bulbs Included Wattage 31W

Is Dimmable: Yes upon request

Installation Type: ceiling mounted Hardwired

Cord length: 100cm Adjustable

Warranty: 3 Years | Suitable for sloped ceiling

Lighting area: 10-15sq meters for 120cm

Certification: CE CCC SAA

Lamp Origin: Shenzhen, China Our Own Factory