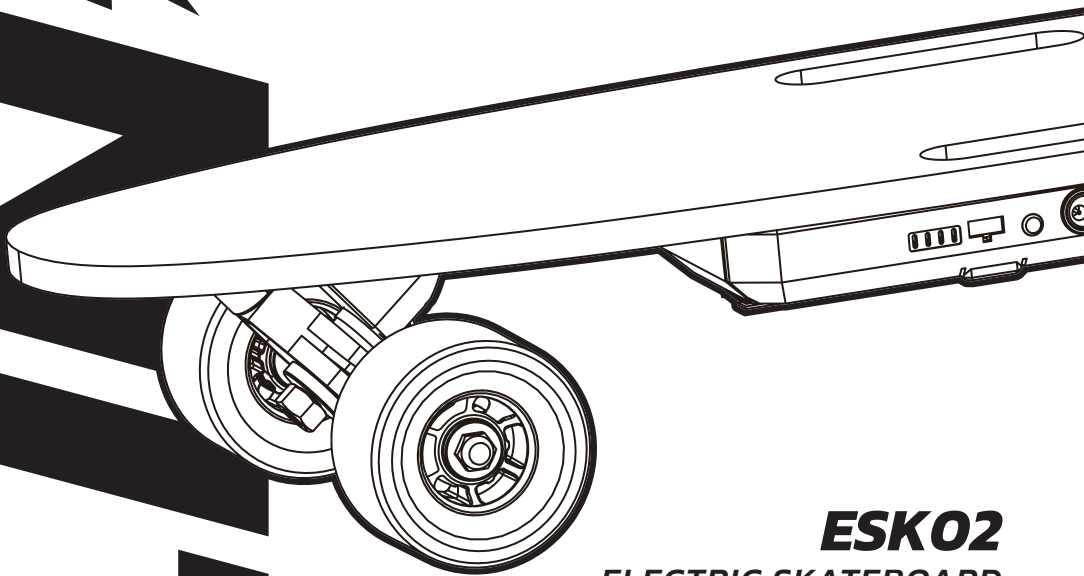


ESK02



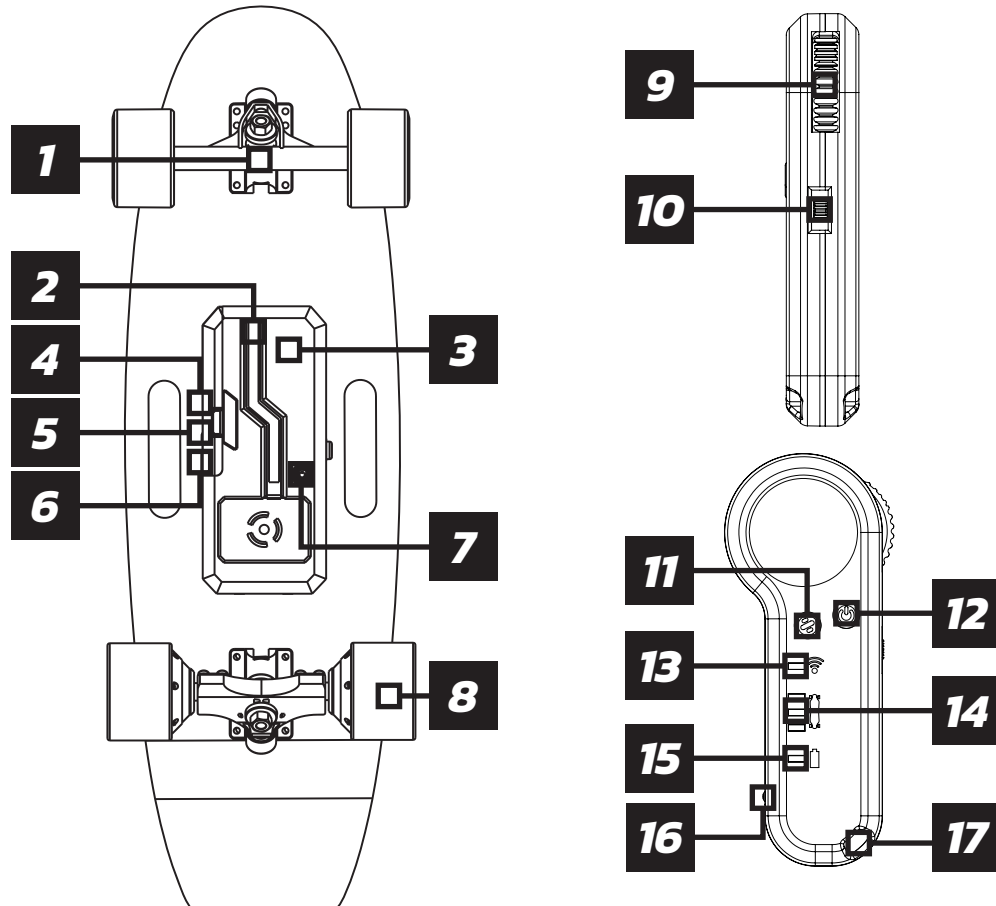
ESK02 ***ELECTRIC SKATEBOARD*** ***USER MANUAL***

CAUTION: Please read the operating instructions before riding. Any child must be accompanied by an adult while using this skateboard. In Australia, each state and territory has specific regulations that may apply to this product, including where you can legally use such products and if you need to register them with your local road traffic authority. Please be sure to familiarise yourself with these prior to using this product.



04	PRODUCT OVERVIEW
05	SKATEBOARD & CONTROLLER PAIRING
05	CHARGER
06	REMOVABLE BATTERY
07	SPECIFICATIONS
08	SAFETY INSTRUCTIONS
08	WARRANTY

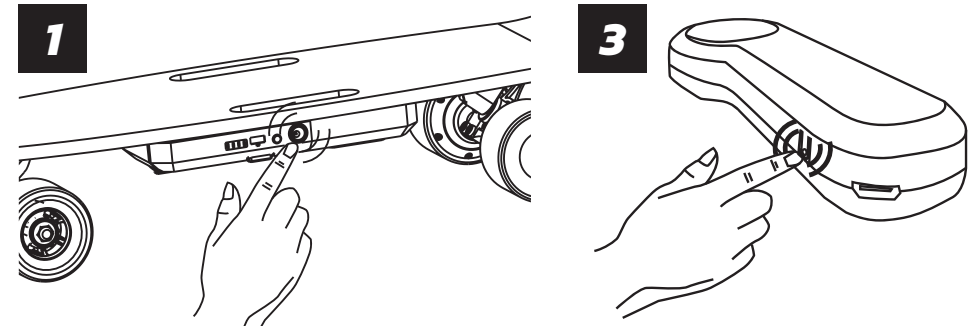
PRODUCT OVERVIEW



#	ACCESSORY / PART	#	ACCESSORY / PART
1	Front Truck	10	Speed Mode (Hi/Med/Low)
2	LED light	11	Directional Mode (Forward/Back)
3	Battery Housing	12	Power Button
4	USB Hub	13	Signal Indicator
5	Battery Indicator Button	14	Skateboard Battery Indicator
6	Charging Port	15	Remote Battery Indicator
7	Power Button	16	Pair Button
8	Hub Motor	17	Charging Port
9	Speed Control		

SKATEBOARD & CONTROLLER PAIRING

Before riding the Skateboard and Remote must be paired together. Ensure both Skateboard and Remote are turned off. Then follow the pairing procedure below.

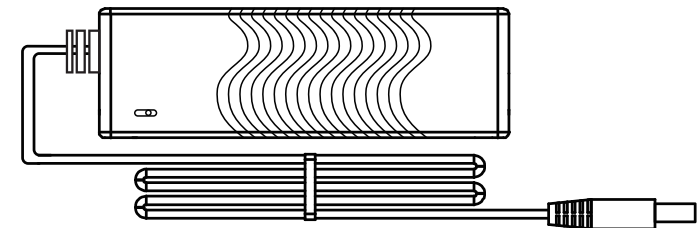


1. Turn on the board
2. Press the power button for 5 seconds, then the power button light will flash.
3. Turn on the remote, then press the pair button. The signal indicator will flash and the power button light will flash with same frequency. Then means the two products are paired successfully.
4. Roll the speed control forward to test the acceleration and backward to test the brake. After tested all function work normal you can start your riding.

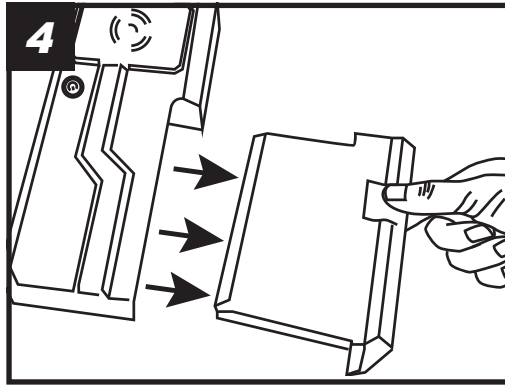
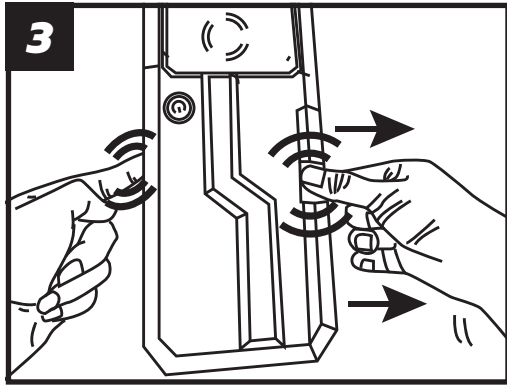
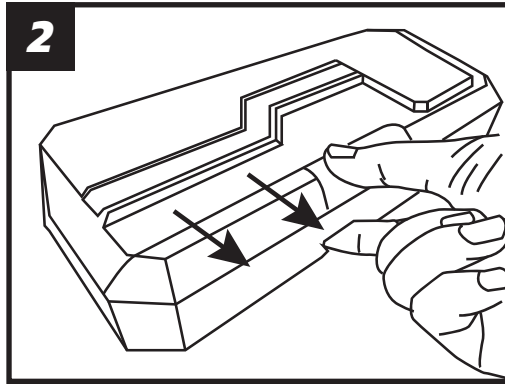
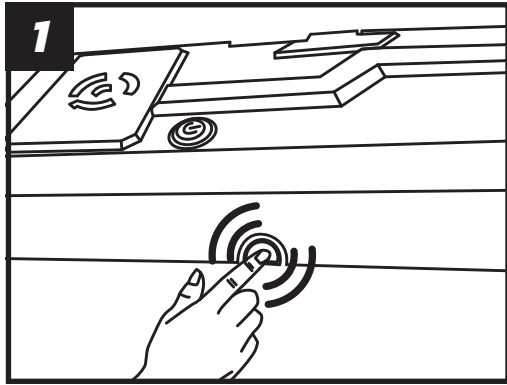
CHARGER

Red Light: Skateboard is charging

Green Light: Skateboard is fully charged.



REMOVABLE BATTERY



1. Using your index finger to push the bulge on the side of the battery pack.
2. With you other hand, use your index finger & thumb as shown to press down on the hook.
3. Using both hands, slide the battery pack from the housing case.
4. The battery is now free and can be replaced.

NOTE: When travelling futher distances it is recommended to travel with 2 or more battery packs. The battery can double up as power bank when seperated from the Skateboard.

SPECIFICATIONS

ACCESSORY / PART		DETAILS
Model	ESK02	
Deck Construction	Maple	
Max Speed	Low Setting	15km/h
	Medium Setting	20km/h
	High Setting	25km/h
Rider Weight	Max: 100kg	
Dimensions	L820 x W260 x H160mm	
Battery	Type	Samsung Cell
	Rated capacity	4.4Ah
	Charging Time	~4 Hours
Motor	Type	75mm Hub Motor
	Power	350W*2
Wheel	Material	Polyurethane
	Size	Dia75 x W51mm
Remote	Distance	14m
	Frequency	2.4GHz
	Charging Time	2 Hours
Weight	Net Weight	6.0 kg
	Gross Weight	7.9 kg

[1] ITEM HEIGHT: from the ground to the top of the scooter;

[2] DISTANCE RANGE: measured when it is no wind and at 30°C, the skateboards fully charged to ride at a even speed of 20km/h on a flat surface with a load of 75kg.

SAFETY INSTRUCTIONS

1. In Australia, each state and territory has specific regulations that may apply to this product, including where you can legally use such products and if you need to register them with your local road traffic authority. Please be sure to familiarise yourself with these prior to using this product.
2. The ESK02 electric skateboard is not a toy, should be treated with appropriate caution. Ensure that you use the board in a safe & appropriate environment, and always wear the required safety gear outline in point 3 below.
3. Safety Gear: It is required that full safety gear is worn when operating this skateboard. An Australian standard skateboard helmet, elbow pads, knee pads, and gloves are all required before riding.
4. Appropriate footwear: Flipflops/Thongs/Jandals or any open toe footwear are not suitable when in operating this skateboard.
5. This skateboard is designed for anyone over 10 years old. Children under the age of 16 must be accompanied by an adult when operating this skateboard.
6. This skateboard is designed to carry one rider only, it is engineered to support a maximum weight capacity of 100kg.
7. The board is designed to drive on flat and paved surfaces. Avoid driving on sand, gravel, mud, rugged or open ground. Do not drive on slippery ground, such as snow, ice or oil.
8. Keep fingers, hairs, and clothing away from motors, wheels and any moving parts.
9. Do not open, modify or tamper with battery housing.

Aquilia Group Pty Ltd. shall not be liable for any financial losses, physical injuries, accidents, legal disputes and other interest conflicts resulted from actions that violate the user instruction manual.

PRODUCT WARRANTY

This product & controller is covered under warranty for regular use for 12 months.

NOTE: Please use this skateboard appropriately, any damage caused by abnormal use will not be covered under the standard warranty, this includes:

- a. If the skateboard is not properly maintained and repaired per the instruction manual.
- b. The use of the ESK03 Skateboard in stunts or at skate parks that results in damage or malfunction.
- c. Any disassembly, modifications, or repairs using non-factory parts.
- d. Incomplete label or part number mismatch.
- e. Commercial rental.
- f. Injury caused by mistakes, traffic accidents, or accidental collisions.
- g. Storing the skateboard in direct sunlight.
- h. Submerging the skateboard submerged in more than 5cm of water.