

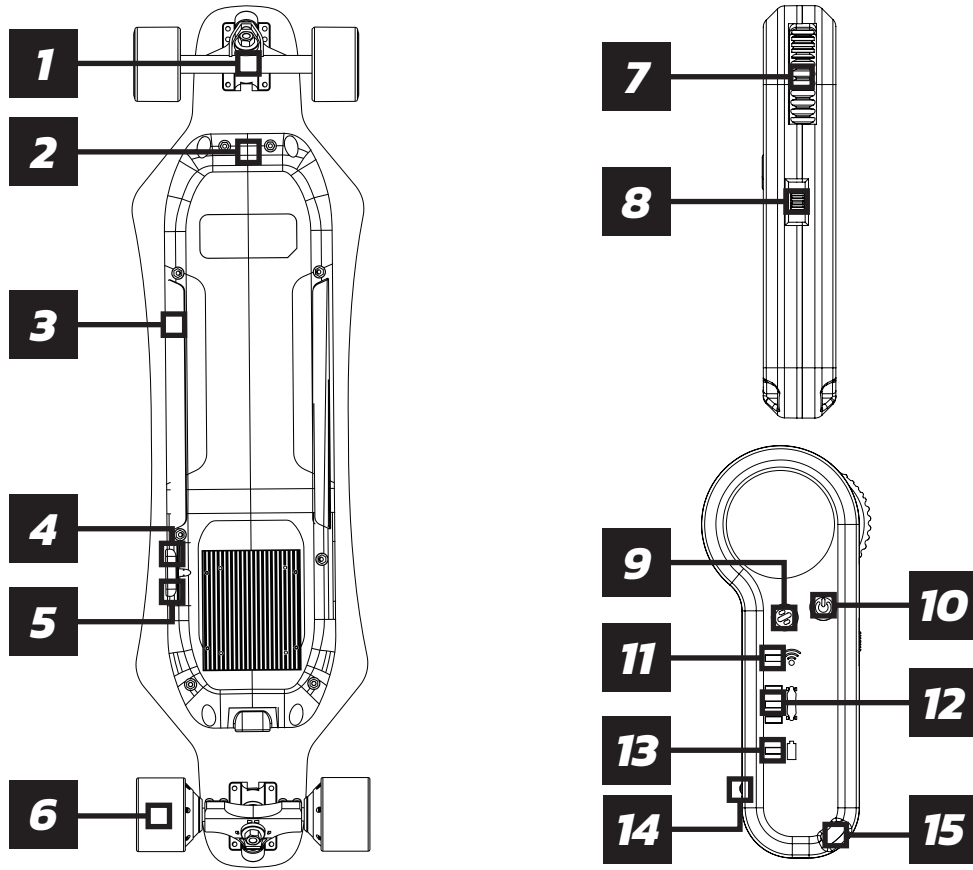
ESK01
ELECTRIC SKATEBOARD
USER MANUAL

CAUTION: Please read the operating instructions before riding. Any child must be accompanied by an adult while using this skateboard. In Australia, each state and territory has specific regulations that may apply to this product, including where you can legally use such products and if you need to register them with your local road traffic authority. Please be sure to familiarise yourself with these prior to using this product.



04	PRODUCT OVERVIEW
05	SKATEBOARD & CONTROLLER PAIRING
05	CHARGER
06	SPECIFICATIONS
07	SAFETY INSTRUCTIONS
08	WARRANTY

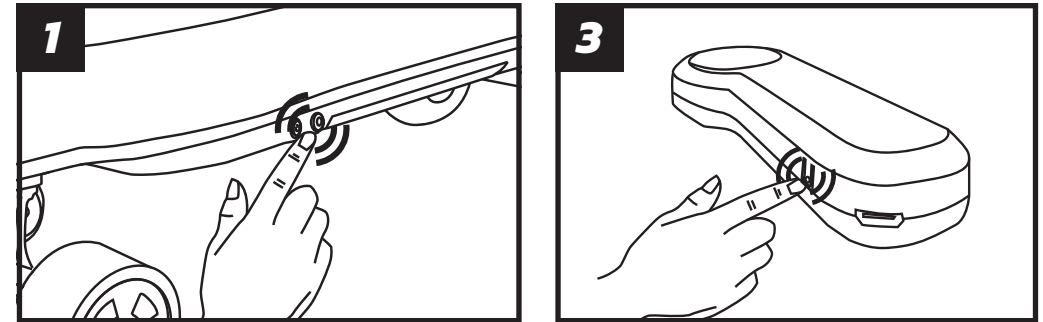
PRODUCT OVERVIEW



#	ACCESSORY / PART	#	ACCESSORY / PART
1	Front Truck	9	Directional Mode (Forward/Back)
2	Battery Housing	10	Power Button
3	LED light	11	Signal Indicator
4	Charging Port	12	Skateboard Battery Indicator
5	Power Button	13	Remote Battery Indicator
6	Belt Drive Motor	14	Pair Button
7	Speed Control	15	Charging Port
8	Speed Mode (Hi/Med/Low)		

SKATEBOARD & CONTROLLER PAIRING

Before riding the Skateboard and Remote must be paired together. Ensure both Skateboard and Remote are turned off. Then follow the pairing procedure below.

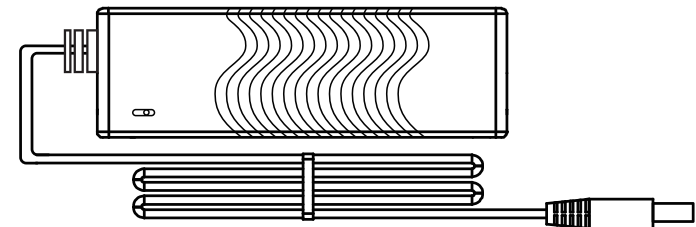


1. Turn on the board
2. Press the power button for 5 seconds, then the power button light will flash.
3. Turn on the remote, then press the pair button. The signal indicator will flash and the power button light will flash with same frequency. Then means the two products are paired successfully.
4. Roll the speed control forward to test the acceleration and backward to test the brake. After tested all function work normal you can start your riding.

CHARGER

Red Light: Skateboard is charging

Green Light: Skateboard is fully charged.



SPECIFICATIONS

ACCESSORY/PART		DETAILS
Model		ESK01
Deck Construction		Maple
Max Speed	Low Setting	12km/h
	Medium Setting	26km/h
	High Setting	42km/h
Distance Range		Up to 18km
Rider Weight		Max: 100kg
Dimensions		L970 x W255 x H135mm
Battery	Type	6.6Ah Samsung Cells
	Charging Time	~4 Hours
Motor	Type	Belt Drive
	Power	1650W*2
Wheel	Material	6 inch silicone or 83mm PU tyres (interchangeable)
	Size	Dia83 x W52mm
Remote	Distance	14m
	Frequency	2.4GHz
	Charging Time	2 Hours
Weight	Net Weight	8.8 kg
	Gross Weight	11.5 kg

[1] ITEM HEIGHT: from the ground to the top of the scooter;

[2] DISTANCE RANGE: measured when it is no wind and at 30°C, the skateboards fully charged to ride at a even speed of 20km/h on a flat surface with a load of 75kg.

SAFETY INSTRUCTIONS

1. In Australia, each state and territory has specific regulations that may apply to this product, including where you can legally use such products and if you need to register them with your local road traffic authority. Please be sure to familiarise yourself with these prior to using this product.
2. The ESK01 electric skateboard is not a toy, should be treated with appropriate caution. Ensure that you use the board in a safe & appropriate environment, and always wear the required safety gear outline in point 3 below.
3. **SAFETY GEAR:** It is required that full safety gear is worn when operating this skateboard. An Australian standard skateboard helmet, elbow pads, knee pads, and gloves are all required before riding.
4. **APPROPRIATE FOOTWEAR:** Flipflops/Thongs/Jandals or any open toe footwear are not suitable when in operating this skateboard.
5. This skateboard is designed for anyone over 10 years old. Children under the age of 16 must be accompanied by an adult when operating this skateboard.
6. This skateboard is designed to carry one rider only, it is engineered to support a maximum weight capacity of 100kg.
7. The board is designed to drive on flat and paved surfaces. Avoid driving on sand, gravel, mud, rugged or open ground. Do not drive on slippery ground, such as snow, ice or oil.
8. Keep fingers, hairs, and clothing away from motors, wheels and any moving parts.
9. Do not open, modify or tamper with battery housing.

Aquila Group Pty Ltd. shall not be liable for any financial losses, physical injuries, accidents, legal disputes and other interest conflicts resulted from actions that violate the user instruction manual.

PRODUCT WARRANTY

This product & controller is covered under warranty for regular use for 12 months.

NOTE: Please use this skateboard appropriately, any damage caused by abnormal use will not be covered under the standard warranty, this includes:

- a. If the skateboard is not properly maintained and repaired per the instruction manual.
- b. The use of the ESK03 Skateboard in stunts or at skate parks that results in damage or malfunction.
- c. Any disassembly, modifications, or repairs using non-factory parts.
- d. Incomplete label or part number mismatch.
- e. Commercial rental.
- f. Injury caused by mistakes, traffic accidents, or accidental collisions.
- g. Storing the skateboard in direct sunlight.
- h. Submerging the skateboard submerged in more than 5cm of water.