

TOP VEHICLE TECH.

KWVXL3

**VAUXHALL
INSIGNIA**

2008-2013

INSTALLATION MANUAL

V1.0321



This dash image is a visual representation for display purposes only.

The information provided in this document is subject to change without notice due to changes and/or improvements to the product/s.

www.topvehicletech.com

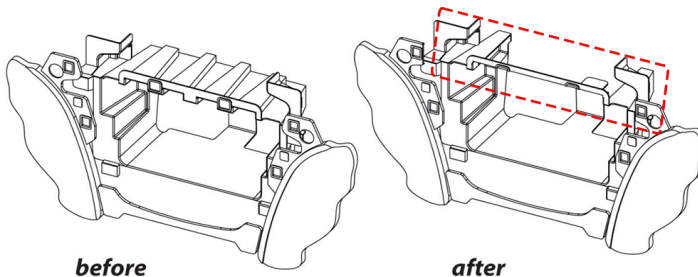
FITTING GUIDE

STEREO REMOVAL

1. Using a panel removal tool remove the cigarette lighter panel surround, the left and right panel that surrounds the main radio and the top panel surrounding the display, disconnecting the hazard switch in the process.
2. Removal of the side panels will uncover 4x bolts, these will need to be removed to allow the removal of the main fascia.
3. Once the main fascia is out of the way, remove the 4x bolts that hold the radio in place and remove it whilst disconnecting all of the wiring.

DASH MODIFICATION

Some plastics will need to be cut and removed from the dashboard to make space for the new car stereo. *Measure where the stereo will sit and take due care when modifying the vehicle. TopVehicleTech always promote the help of professional installers. TopVehicleTech will not be held responsible for any damage to the vehicle.*



DAB ANTENNA INSTALLATION

1. Open the passenger side door and proceed to pull away the door trim from the pillar.
2. Using a set of panel removal tools, begin to pry away the pillar casing.
3. The glovebox will need to be dropped down to route the antennas wiring. To do this, first open the glovebox and unclip the glovebox side panel. You will need to remove 2x bolts atop the inside lip, 2x at the bottom, and 2x underneath. Once free, simply leave in the footwell.
4. The DAB antenna not only has a self adhesive backing, but also features a black earth sheet. When placing the DAB antenna, the earth sheet **MUST** be placed onto the metal part of the pillar. The antenna itself must be located roughly 15cm from the top of the windscreen.

Note: this antenna must not be placed atop any kind of heating elements, this will interfere with the antenna's signal.

5. Once happy with the placement, take the 3m of wiring extension and feed it down through to the stereo's opening. With the wiring adjusted to the appropriate length, feel free to re-install the glovebox.

FITTING GUIDE

FASCIA PLATE SET-UP

1. With the main fascia removed from the dashboard, disengage the clips that hold the air conditioning unit in place and re-locate to the appropriate opening on the new fascia.
2. Then remove the switches for 'ESP' and 'Park Distance Control' located on the main fascia panel, and again re-locate them to the appropriate openings on the new fascia panel.
3. Attach the clips that come within the kit to the back of the new fascia panel.
4. Attach the brackets that come with the kit to the relevant sides of the stereo. Place into the vehicle and roughly test fit with the fascia to measure whether the brackets need moving forwards/backwards.
5. When happy with the alignment of the brackets, and the "***Stereo Installation***" process is complete, screw the stereo into the dashboard utilising the pre-existing bolts and clip on the new fascia thereafter.

BEFORE INSTALLATION - DIPSWITCHES

On this particular interface are a set of dipswitches. These dipswitches have the following properties:

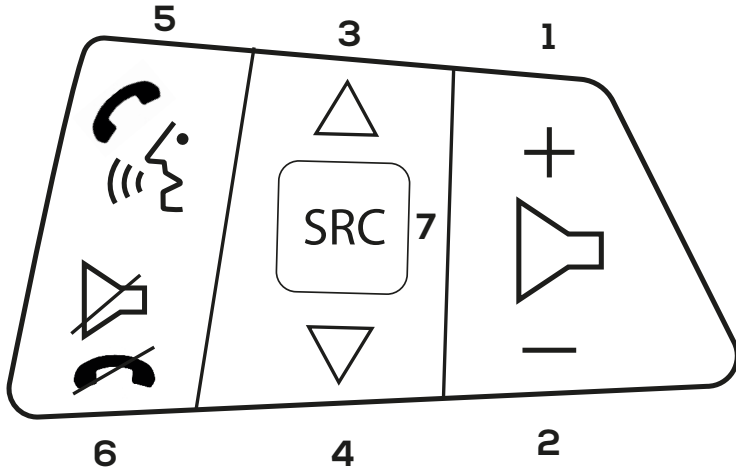
- | | |
|--|------------------------------------|
| 1: OFF - Kenwood. | ON - Pioneer. |
| 2: OFF - Vehicles with 4 Line Display. | ON - Vehicles with 2 Line Display. |
| 3 & 4: No Function | |

STEREO INSTALLATION

1. Take the steering wheel control interface in hand and connect both the 12-way stereo patch lead and the 14-way steering wheel harness connectors to the corresponding sides.
2. Connect the bullet connector from the stereo patch lead to the 'steering wheel remote input' on the back of the new stereo.
3. Connect the antenna adapter to both the pre-existing vehicle connection and to the back of the new stereo.
4. Connect the DAB antenna's SMB connector to the back of the new stereo.
5. Attach the additional wiring on the harness to the back of the stereo:
Pink - Speed Pulse **Green** - Park Brake **Purple** - Reverse **Blue** - Antenna Remote **Yellow/Black** - Mute
6. When all the above wires (and any additional accessories) have been connected, finally make the connections between the stereo and the vehicles pre-existing connector.

STEERING WHEEL CONTROL FUNCTIONALITY

Please note: configuration layout may differ dependent on vehicle model.



Original Button

1. Volume +
2. Volume -
3. Up Arrow
4. Down Arrow
5. Pick Up/Speech
6. Hang Up/Mute
7. Source

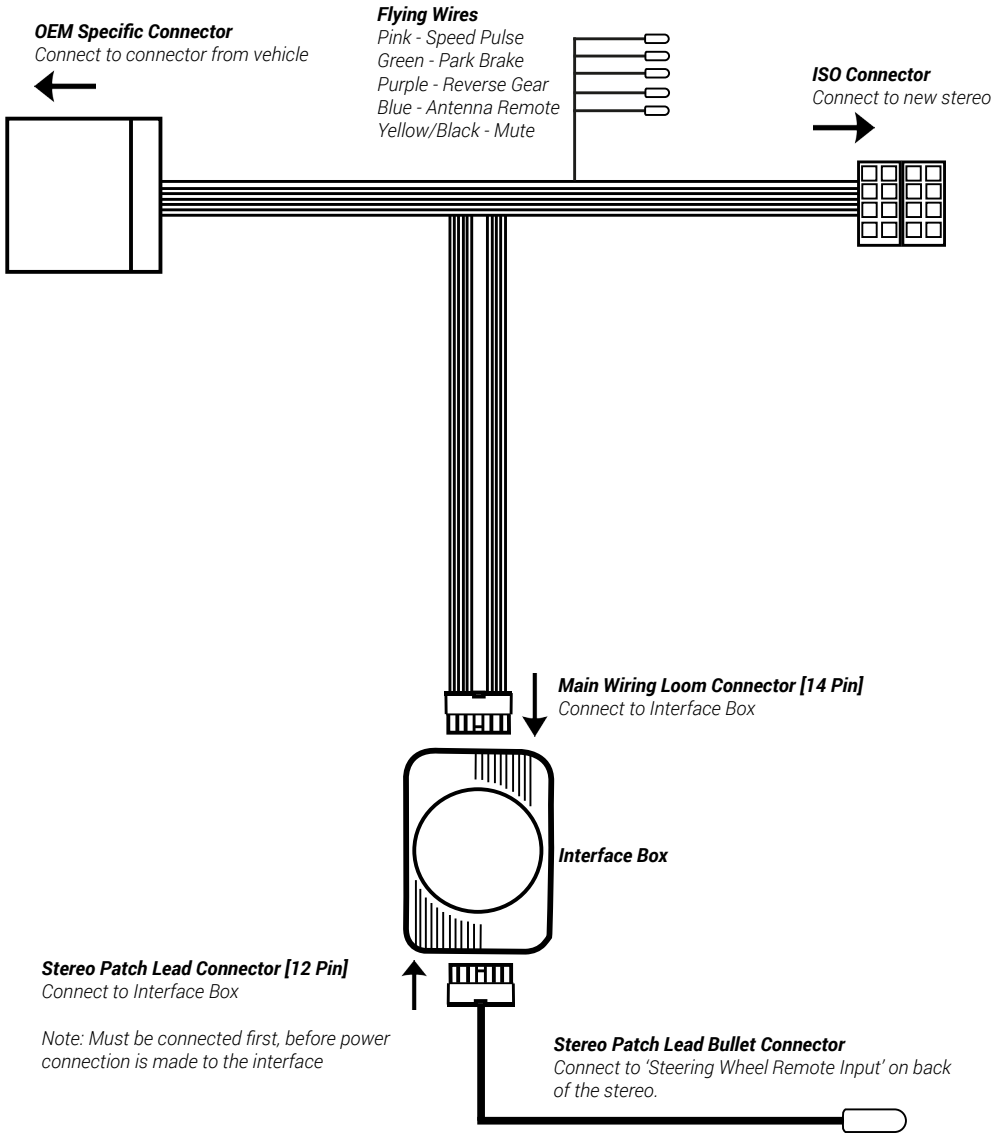
New Function

1. Volume +
2. Volume -
3. Track +
4. Track -
5. Pick Up
6. Hang Up
7. Source (Short Press), Settings Menu (Long Press)

NAVIGATING THE SETTINGS MENU

1. Long press of 'Source' (7.) will enter the Settings Menu.
2. Use 'Up & Down Arrow' (3&4.) to scroll through the menu options.
3. Short press 'Source' (7.) to enter a sub-menu.
4. Short press 'Source' (7.) to select the desired option.
5. Press 'Hang Up/Mute' (6.) to go back.

WIRING DIAGRAM





TECHNICAL ASSISTANCE

If at any point you experience any problems and need any assistance before, during or after the installation process, please contact us via :

Phone: **01420 470 605**

E-Mail: **help@topvehicletech.com**

Mon - Fri 9am - 5.30pm GMT

If you would like to download a digital copy of this manual, or any other product, then please visit the **www.topvehicletech.com** website.

This manual is considered correct at the time of printing but is subject to change. For the latest manuals & updates, refer to our website.

Copyright 2021 by TopVehicleTech.

All rights reserved. No part of this publication may be reproduced, distributed or transmitted in any form or by any means, including photocopying, recording, copying or other electronic or mechanical methods, without the prior written permission of the author.