

# TOP VEHICLE TECH.

## KWBMW15 BMW

1 SERIES (F20/21) 2012-2016  
2 SERIES (F22/23/87) 2014-2019

### INSTALLATION MANUAL

V1.0421



*This dash image is a visual representation for display purposes only.*

*The information provided in this document is subject to change without notice due to changes and/or improvements to the product/s.*

[www.topvehicletech.com](http://www.topvehicletech.com)

## ABOUT THIS PRODUCT

---

The **KWBMW15** installation kit allows for the retention of the vehicle's steering wheel controls and maintains the original aesthetic of the interior when installing a new car stereo. The **KWBMW15** gives you everything you need for a complete install in one box. The components of this kit are compatible for the BMW 1 Series (F20/21) (2012-2016) and BMW 2 Series (F22/23/87) (2014-2019) with MOST amplified NBT iD5 systems. The harness and interface retains steering wheel controls, phone buttons, amplifier retention and select vehicle settings. It will also generate parking sensor graphics and provides an input for a reverse camera (sold separately). Supplied with Quadlock connector.

**NB: this kit is for amplified vehicles.**



## CONTENTS

---

- 1x Fascia plate (with accessories)
- 1x Instruction manual
- 1x Steering wheel control harness and interface
- 1x Antenna adapter
- 1x DAB antenna adapter
- 1x Stereo patch lead

## CUSTOMER SUPPORT

---

Installations should be carried out by, or under the guidance of an experienced installer. If you do encounter any problems during the installation of this product, then please contact our dedicated customer service team at:

Phone: **01420 470 605** E-Mail: [help@topvehicletech.com](mailto:help@topvehicletech.com)

## FITTING GUIDE

---

### STEREO REMOVAL

1. Begin by using a bojo tool to remove the panel below the climate control assembly and disconnect the wire in the process.
2. Using a bojo tool again, remove the air vent panel/air vents, when free, pull out of the dashboard and disconnect the wiring behind.
3. Remove the 4x screws that surround the main radio/climate control panel. Once free, pull away from the dashboard and disconnect the wiring.
4. With the main panel removed, undo the 2x screws on either side of the main radio and remove it whilst disconnecting all of the wiring.
5. Undo the two screws that hold the top display in place. You will need to remove the top display from the dashboard to disconnect the LVDS connection. Note that the screens are delicate, so do take your time with this step of the process. Once out and undone, leave to one side.

### DASH MODIFICATION

Some plastics will need to be cut and removed from the dashboard to make space for the new car stereo. *Measure where the stereo will sit and take due care when modifying the vehicle. TopVehicleTech always promote the help of professional installers. TopVehicleTech will not be held responsible for any damage to the vehicle.*



### DAB ANTENNA INSTALLATION

1. Open the passenger side door and proceed to pull away the door trim from the pillar.
2. Using a set of panel removal tools, begin to pry away the pillar casing.
3. The glovebox will need to be dropped down to route the antennas wiring. Firstly undo the 2x screws that hold the kick panel in place and disconnect the wiring whilst removing.
4. With the kick panel out of the way, you will then need to undo 2x bolts underneath as well as 3x screws within the lip and 1x on the side of the glovebox. Once free, simply leave in the footwell.
5. The DAB antenna not only has a self adhesive backing, but also features a black earth sheet. When placing the DAB antenna, the earth sheet **MUST** be placed onto the metal part of the pillar. The antenna itself must be located roughly 15cm from the top of the windscreen.

**Note: this antenna must not be placed atop any kind of heating elements, this will interfere with the antenna's signal.**

6. Once happy with the placement, take the 3m of wiring extension and feed it down through to the stereo's opening. With the wiring adjusted to the appropriate length, feel free to re-install the glovebox.

## FITTING GUIDE

---

### FASCIA PLATE SET-UP

1. Take the climate control panel and relocate the climate control buttons out and into the new fascia. Ensure when placing that the middle clip is lined up correctly for the perfect fit.
2. Attach the brackets to the new stereo using the screws within the kit. With the brackets attached, offer the whole unit to the back of the fascia and test fit within the vehicle to gauge the correct depth.
3. If the OEM panel has an LED located above the ashtray, this can be relocated into the housing provided on the new fascia.
4. When happy with the alignment, and the **“Stereo Installation”** process is complete, screw the stereo into the dashboard using the pre-existing screws. Then re-connect any wiring and install the new fascia over the stereo.

### STEREO INSTALLATION

1. Start by attaching the LVDS extension to the display, this can then be put back in place. Then route the rest of the LVDS cable through the glovebox and then toward the rear of vehicle.
2. You will also need to extend the following wires to the rear of the vehicle: Yellow 12V Permanent, Black Data Extension, Female Quadlock connector (with male molex & ground terminal).

### REAR STEREO CONNECTIONS

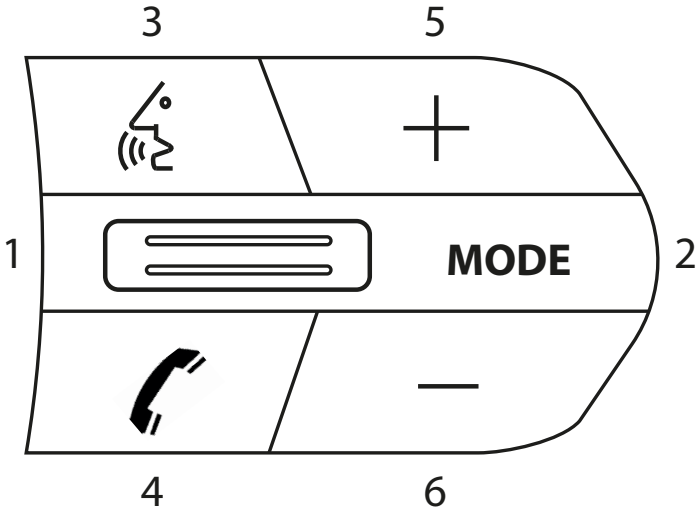
3. Take the OEM stereo and re-locate it to a suitable position in the rear of the vehicle i.e. by the amplifier.
4. With the wires routed, you will need to connect the yellow 12V permanent wire to a source of 12 volt in the rear of vehicle i.e. the fuse board or direct to battery.
5. Connect the data extension cable to the molex connector situated on the female Quadlock connector. At this point the ground terminal on the Quadlock connector must be attached to a non-live element.
6. Connect the LVDS connector and Quadlock connector to the OEM unit. This can then be tucked away.

### FRONT STEREO CONNECTIONS

7. Take the steering wheel control interface in hand and connect both the 12-way stereo patch lead and the 14-way steering wheel harness connectors to the corresponding sides.
8. Connect the bullet connector from the stereo patch lead to the ‘steering wheel remote input’ on the back of the new stereo.
9. Connect the female molex on the harness to the male molex on the data extension cable.
10. Connect the 2 pin connector on the harness to the speaker box.
11. Connect the Red & White RCA connectors on the harness to the back of the stereo.
12. Take the Amplifier Interface that comes with the kit and attach both the 8 pin connector from the harness as well as the vehicles pre-existing fibre connection.
13. Connect the ground terminal to a non-live element within the dash cavity.
14. Connect the DAB antenna’s SMB connector to the back of the new stereo.
15. Attach the antenna adapter to the vehicles pre-existing connection and the back of new stereo.
16. Attach the additional wiring on the harness to the back of the stereo:  
**Pink** - Speed Pulse **Brown** - Mute **Purple** - Reverse Gear **Green** - Park Brake
17. When all the above wires (and any additional accessories) have been connected, finally make the connections between the stereo and the vehicles pre-existing connectors.

## STEERING WHEEL CONTROL FUNCTIONALITY

Please note: configuration layout may differ dependent on vehicle model.



### Original Button

1. Track +/- (Scroll)
2. Mode
3. Speech
4. Pick Up
5. Volume +
6. Volume -

### New Function

1. Track +/- (Scroll) Push in for Mute
2. Mode / **OEM Unit Control**
3. Speech
4. Pick Up (Short Press) Hang Up (Long Press)
5. Volume +
6. Volume -

### OEM Unit Control

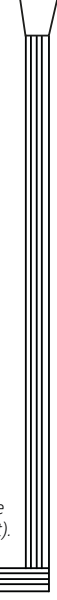
If the OEM head unit has been retained during the installation, hold 'Mode' (2) for approx 8-10 seconds until a chime is heard from the interfaces 'speaker box'.

The steering wheel controls will now control the OEM head unit, allowing you to interact with the vehicles previous settings. To revert back to the aftermarket stereo control, press and hold 'Mode' (2) for approx 8-10 seconds.

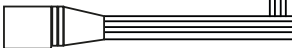
# WIRING DIAGRAM



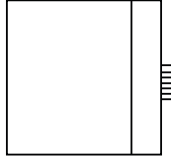
**LVDS Connector [Male]**  
Connect male connector to the OEM display.



**LVDS Connector [Female]**  
Connect female connector to the re-routed OEM head unit (in boot).

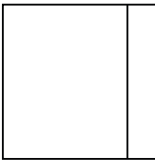


**Quadlock Connector**  
Connect to quadlock

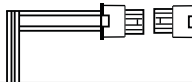


**Ring Terminal**  
Connect to a source of ground

**Quadlock Connector [Female]**  
Connect to re-routed OEM head unit (in boot).



**Data Extension Cable [Male to Female, 4 Pin]**  
Route to the OEM head unit (in boot) and connect to relevant molex connectors beside Quadlock connectors.



**Yellow 12V Permanent Wire**  
Connect to source of 12V (fuse board or direct to battery)



**Ring Terminal**  
Connect to a source of ground

# WIRING DIAGRAM

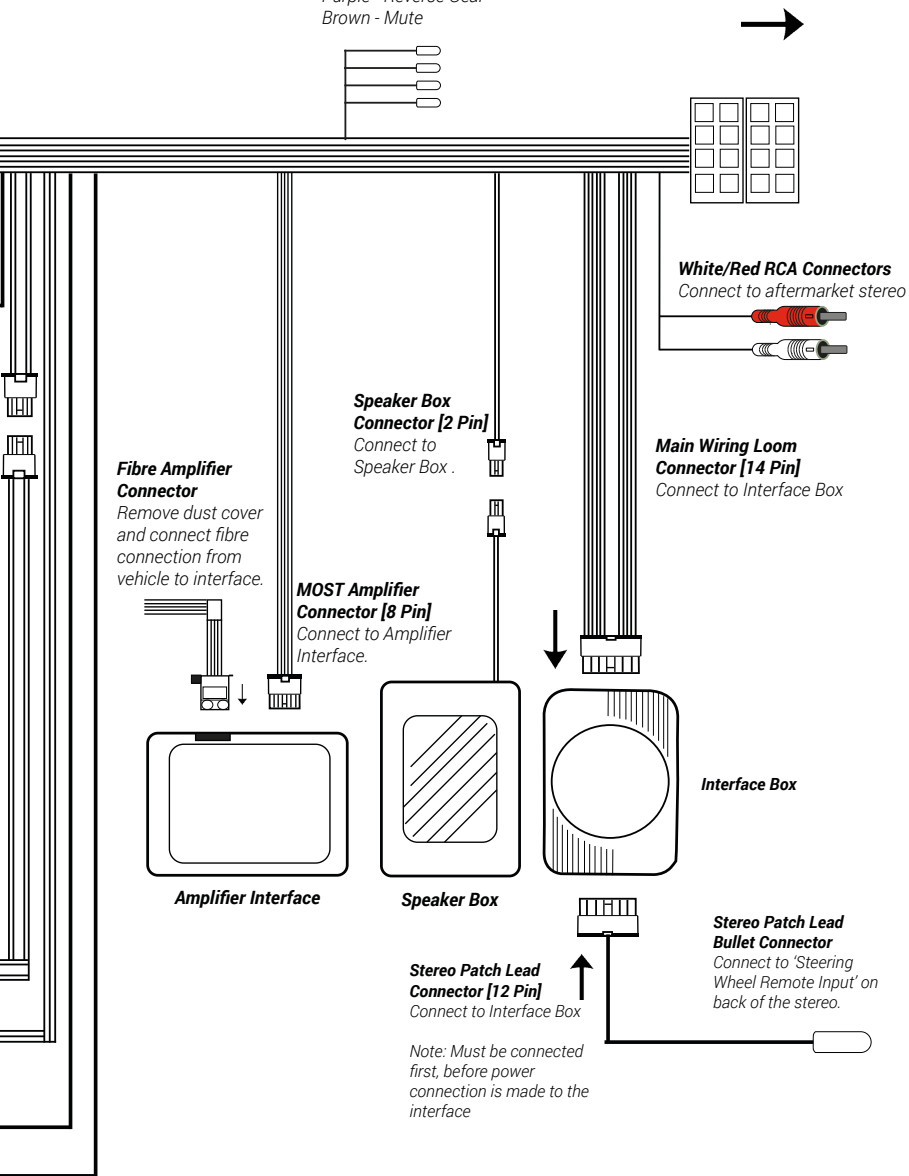
**[Male]**  
connector from vehicle

**Flying Wires**

- Pink - Speed Pulse
- Green - Park Brake
- Purple - Reverse Gear
- Brown - Mute

**Male ISO Connector**

Connect to aftermarket stereo





## TECHNICAL ASSISTANCE

---

If at any point you experience any problems and need any assistance before, during or after the installation process, please contact us via :

Phone: **01420 470 605**

E-Mail: **help@topvehicletech.com**

Mon - Fri 9am - 5.30pm GMT

If you would like to download a digital copy of this manual, or any other product, then please visit the **[www.topvehicletech.com](http://www.topvehicletech.com)** website.

This manual is considered correct at the time of printing but is subject to change. For the latest manuals & updates, refer to our website.

*Copyright 2021 by TopVehicleTech.*

*All rights reserved. No part of this publication may be reproduced, distributed or transmitted in any form or by any means, including photocopying, recording, copying or other electronic or mechanical methods, without the prior written permission of the author.*