

TOP VEHICLE TECH.

KWAUDI2

AUDI

A4 (8K) 2008-2015

A5 (8TF) 2008-2015

INSTALLATION MANUAL

V1.0421



This dash image is a visual representation for display purposes only.

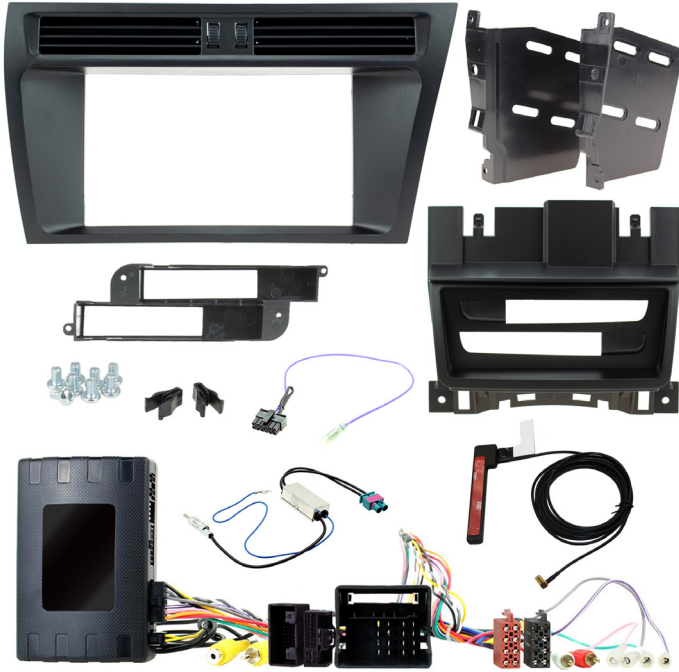
The information provided in this document is subject to change without notice due to changes and/or improvements to the product/s.

www.topvehicletech.com

ABOUT THIS PRODUCT

The **KWAUDI2** installation kit allows for the retention of the vehicle's steering wheel controls and helps maintain the original aesthetic of the interior when installing a new car stereo. The **KWAUDI2** gives you everything you need for a complete install in one box. The components of this kit are compatible for the Audi A4 (8K) and Audi A5 (8TF) (2008-2015) with 3G MMI factory stereos. The wiring harness and Infodapter interface will retain the steering wheel controls, factory phone buttons and vehicle settings. It also aids in generating parking sensor graphics for the new stereo as well as providing an input for a reverse camera (if applicable). Supplied with a Quadlock connector.

NB: this installation kit is only compatible with 3G MMI systems.



CONTENTS

- 1x Fascia plate (with accessories)
- 1x Instruction manual
- 1x Steering wheel control harness and Infodapter interface
- 1x Antenna adapter
- 1x DAB antenna adapter
- 1x Stereo patch lead

CUSTOMER SUPPORT

Installations should be carried out by, or under the guidance of an experienced installer. If you do encounter any problems during the installation of this product, then please contact our dedicated customer service team at:

Phone: **01420 470 605** E-Mail: help@topvehicletech.com

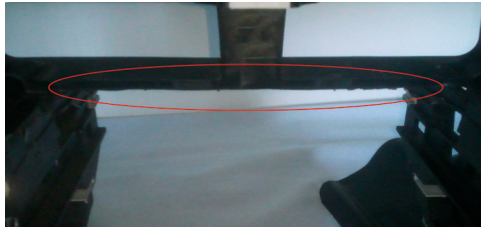
FITTING GUIDE

STEREO REMOVAL

1. Use a bojo tool to pry away and unclip the trim that surrounds the top screen display. When loose, remove completely whilst disconnecting the hazard switch.
2. Using the bojo tool again, pry away and loosen the climate control panel located at the bottom of the dashboard. Once out, disconnect the panel and put to one side.
3. Using a pick tool, disengage the spring clips located on the inside of the the fan blades. When done correctly, you can remove these completely.
4. Using a pair of radio release keys (sold separately) remove the radio from the dashboard and disconnect all of the wiring.
5. Pull the gear stick cover up so that it exposes the edges of the gear panel. Take a firm hold and pull the centre panel out of place and disconnect the two wires underneath, putting the panel to one side.
6. Undo 2x 8mm screws located on the edge of the ashtray panel/pocket. When free, remove the ashtray panel/pocket from the dashboard.
7. Finally remove the buttons located on the bottom of the head unit, and additionally remove the 2x rubber grommets from the back of the OEM pocket (*see Fascia Plate Set-Up for more detail*).

DASH MODIFICATION

Some plastics will need to be cut and removed from the dashboard to make space for the new car stereo. *Measure where the stereo will sit and take due care when modifying the vehicle. TopVehicleTech always promote the help of professional installers. TopVehicleTech will not be held responsible for any damage to the vehicle.*



DAB ANTENNA INSTALLATION

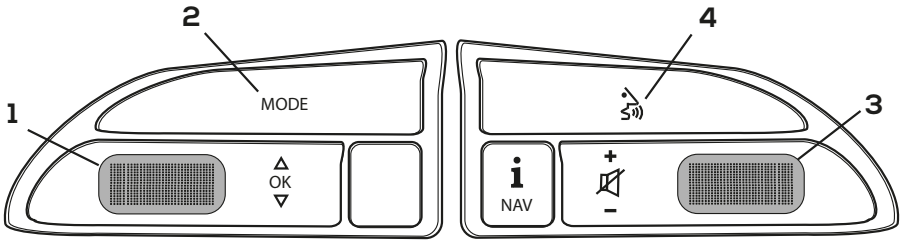
1. Open the passenger side door and proceed to pull away the door trim from the pillar.
2. Using a set of panel removal tools, begin to pry away the pillar casing.
3. The glovebox will need to be dropped down to route the antennas wiring. To do this you will need to remove 2x bolts located at underneath, 1x to the side, and 6x screws located within the glovebox itself. Once free, simply leave in the footwell.
4. The DAB antenna not only has a self adhesive backing, but also features a black earth sheet. When placing the DAB antenna, the earth sheet **MUST** be placed onto the metal part of the pillar. The antenna itself must be located roughly 15cm from the top of the windscreen.

Note: this antenna must not be placed atop any kind of heating elements, this will interfere with the antenna's signal.

5. Once happy with the placement, take the 3m of wiring extension and feed it down through to the stereo's opening. With the wiring adjusted to the appropriate length, feel free to re-install the glovebox.

STEERING WHEEL CONTROL FUNCTIONALITY

Please note: configuration layout may differ dependent on vehicle model.



STEERING WHEEL CONTROLS

Original Button

1. Track + / Track -
Source (Short Press)
2. Mode
3. Volume + / Volume -
4. Speech

New Function

1. Track + / Track -
Source (Short Press) / **Enter Infodapter Menu** (Long Press)
2. Source (Short Press) / **Enter Infodapter Menu** (Long Press)
3. Volume + / Volume -
4. Pick Up (Short Press)
Hang Up (Long Press)

STEERING WHEEL CONTROLS - IN INFODAPTER

1. Menu + / Menu -
Select Menu Item (Short Press)
2. Select Menu Item (Short Press)
3. Volume + / Volume -
4. Pick Up (Short Press)
Hang Up (Long Press)

INFODAPTER FUNCTIONALITY

As well as steering wheel control functionality, this interface allows the retention of key vehicle features and functions via a bespoke 'Infodapter'. Accessing the Infodapter, you are able to navigate through the following options and settings:

Configuration Menu
Drive Select Settings
Vehicle Settings
Infodapter Settings
Language
Version
Back

DRIVE SELECT SETTINGS

Within the 'Drive Select Settings' menu, you are able to select the desired drive mode from the list below:

- Individual
- Comfort
- Auto
- Dynamic
- Off Road
- Efficiency

INFODAPTER FUNCTIONALITY

VEHICLE SETTINGS

Within 'Vehicle Settings' you are able to alter a whole range of features that would have originally been lost if not for the Infodapter. A list of features and functions you will find are*:

Time/Date

- Hours
- Minutes
- Years
- Month
- Day

Windows & Wipers

- Convenience Open Front
- Convenience Open Rear
- Wiper Service Position
- Rain Sensors

Central Locking

- Unlock Single Door
- Auto Locking
- Boot Lid & Tailgate

Lights

- Come Home Light Time
- Leaving Home Lights
- Auto Headlights
- Daytime Running Lights
- Headlamp Converter

Parking System

- Display
- Front Volume
- Front Frequency
- Rear Volume
- Rear Frequency

**Note: Although care has been taken to ensure the accuracy of this menu structure at the time of printing this document, sudden changes in software by the manufacturer or incompatibilities with the interface cannot be accounted for. Do not consider this list to be exhaustive.*

INFODAPTER SETTINGS

Within 'Infodapter Settings' you are able to alter the look and feel of the Infodapters menu/display:

Screen Size/Position

- Horizontal Size
- Horizontal Position
- Vertical Size
- Vertical Position

Picture Settings

- Brightness
- Contrast
- Saturation

Preferences

- Camera Connected - Choose the style of camera connected to the vehicle (if applicable).
- Park Brake Source - Set 'Park Brake' output to activate when park brake is on (**Brake**), when speed is less than 3km/h (**Speed**) or to remain on at all times (**Always On**).
- Restore Factory Settings - select 'Yes' to return all Infodapter settings to factory defaults.

Installer Menu

The installer menu will display a variety of options which can be added or removed from the Infodapter menus. Each option can be set to '**OFF**' to remove the option from the menus, or to '**ON**' or '**AUTO**' to display it.

*e.g. if the 'Language' option is changed to 'OFF' in the **Installer Menu**, the option will disappear from the main **Configuration Menu**. To make the option reappear, return to the **Installer Menu** and toggle the feature to '**ON**'.*

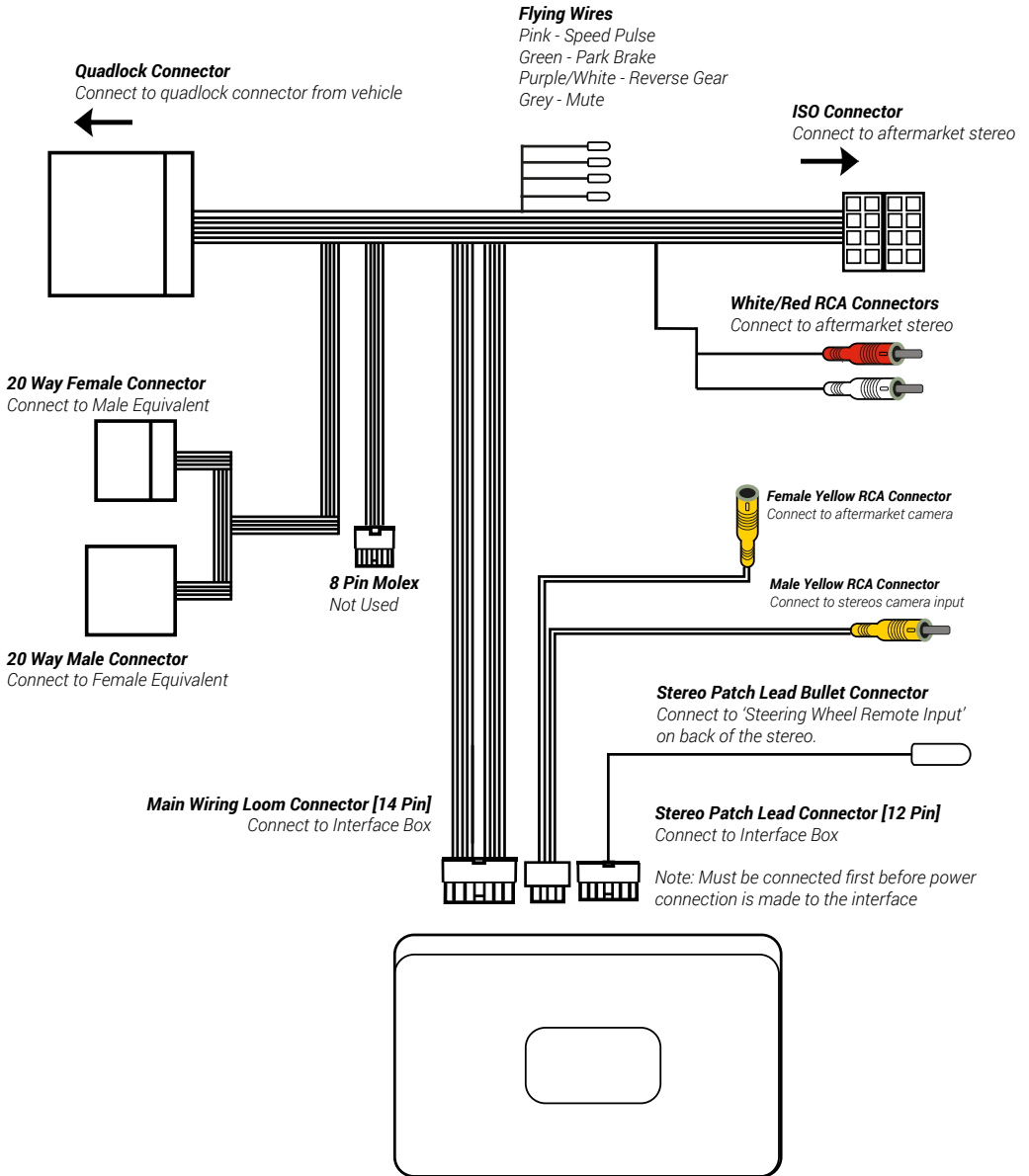
Note: selecting '**AUTO**' will make the selected option appear in the Infodapter menus **only if the vehicle detects that the option is available**. This is only available for features that the car can detect, so will not appear against some options.

LANGUAGE & VERSION

Within the 'Language' menu, you are able to select between a wide array of dialects. This is default to English upon installation.

Within 'Version', you are able to view the current firmware that is being utilised by the Infodapter.

WIRING DIAGRAM





TECHNICAL ASSISTANCE

If at any point you experience any problems and need any assistance before, during or after the installation process, please contact us via :

Phone: **01420 470 605**

E-Mail: **help@topvehicletech.com**

Mon - Fri 9am - 5.30pm GMT

If you would like to download a digital copy of this manual, or any other product, then please visit the **www.topvehicletech.com** website.

This manual is considered correct at the time of printing but is subject to change. For the latest manuals & updates, refer to our website.

Copyright 2021 by TopVehicleTech.

All rights reserved. No part of this publication may be reproduced, distributed or transmitted in any form or by any means, including photocopying, recording, copying or other electronic or mechanical methods, without the prior written permission of the author.