

STEP 1:

Front and rear doors with frames

Front door frame with no label

Front doors

Side Brace

Rear doors

Rear door frame with label

X12

Serial Number	Description	Number
1	Front and rear doors with frames	1
2	Side Brace	3
3	M8*20 Hex countersink screws	12

STEP 2:

Side Brace

X12

Serial Number	Description	Number
1	Side Brace	3
2	Hex countersink screws	12

Install three more side braces

STEP 3:

PMA (Left)

PMA (Right)

Front doors

X24

7.09
180.0

Front doors

The front PMA is 180mm away from the front door

Serial Number	Description	Number
1	PMA (Left)	2
2	PMA (Right)	2
3	M5*10 pan head screws	24

STEP 4:

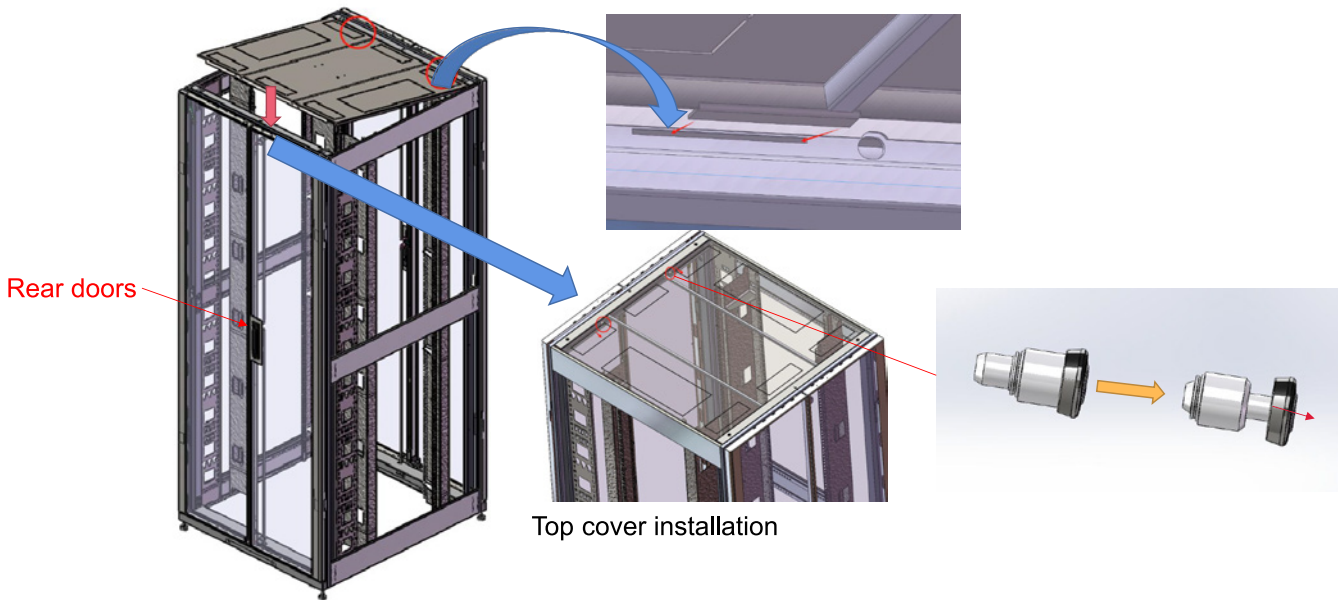
RCC

Front doors

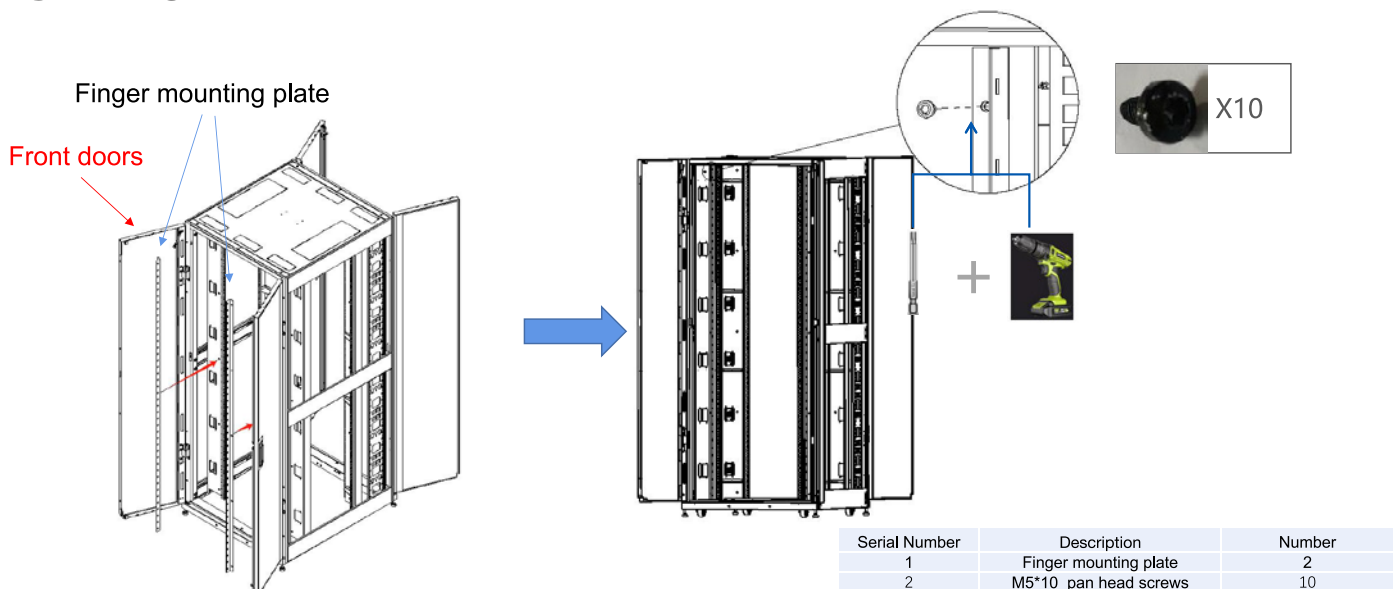
X12

Serial Number	Description	Number
1	RCC	2
2	M5*10 flat head screws	12

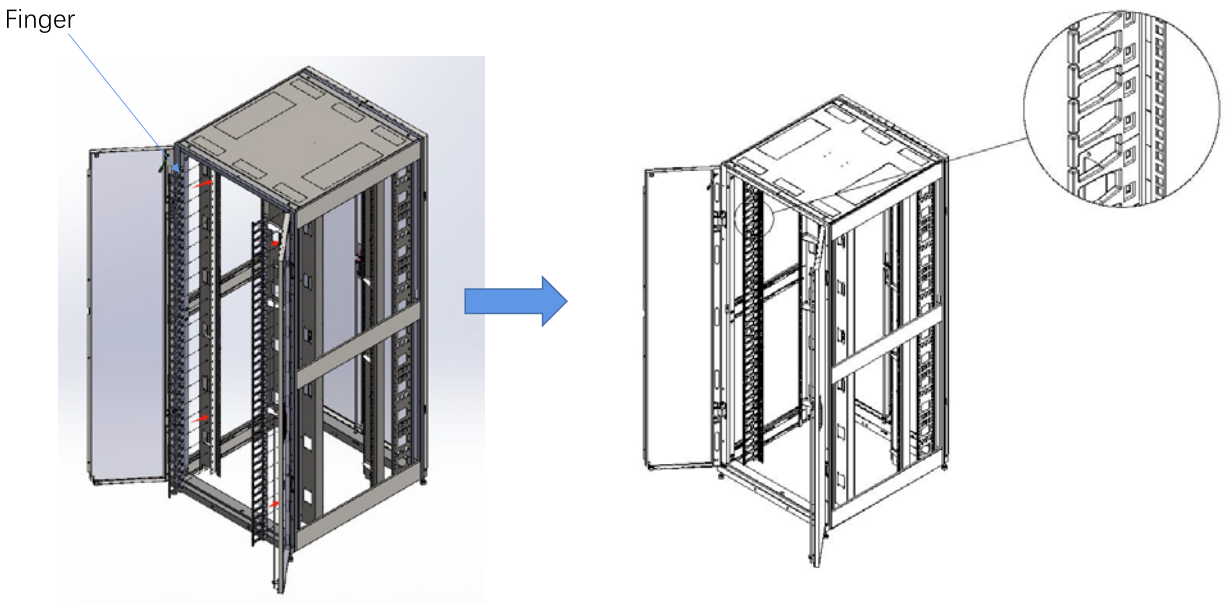
STEP 5:



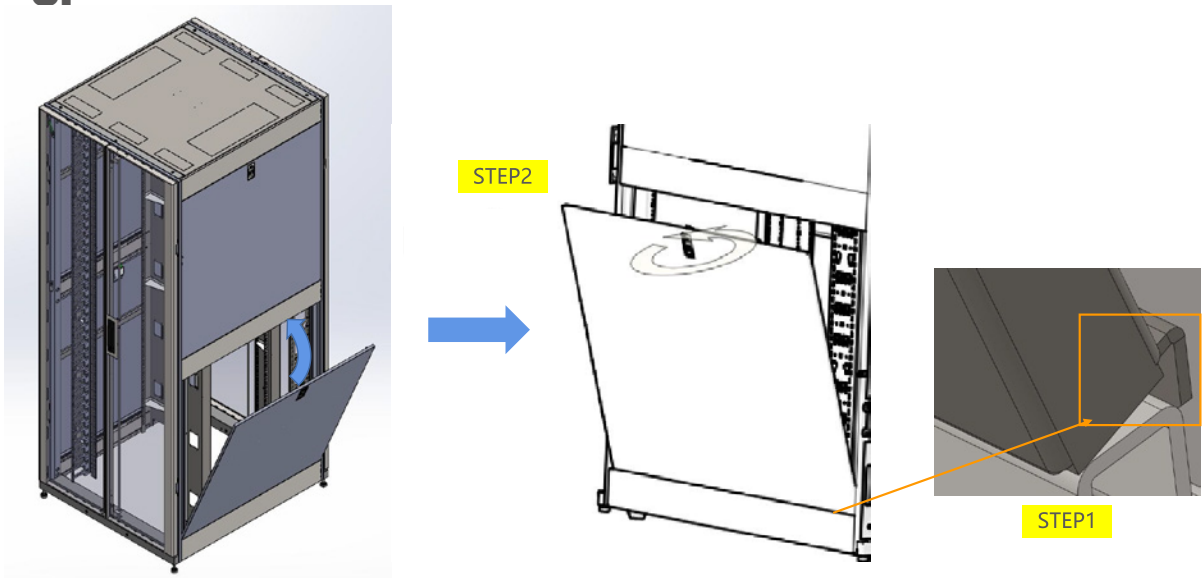
STEP 6:



STEP 7:

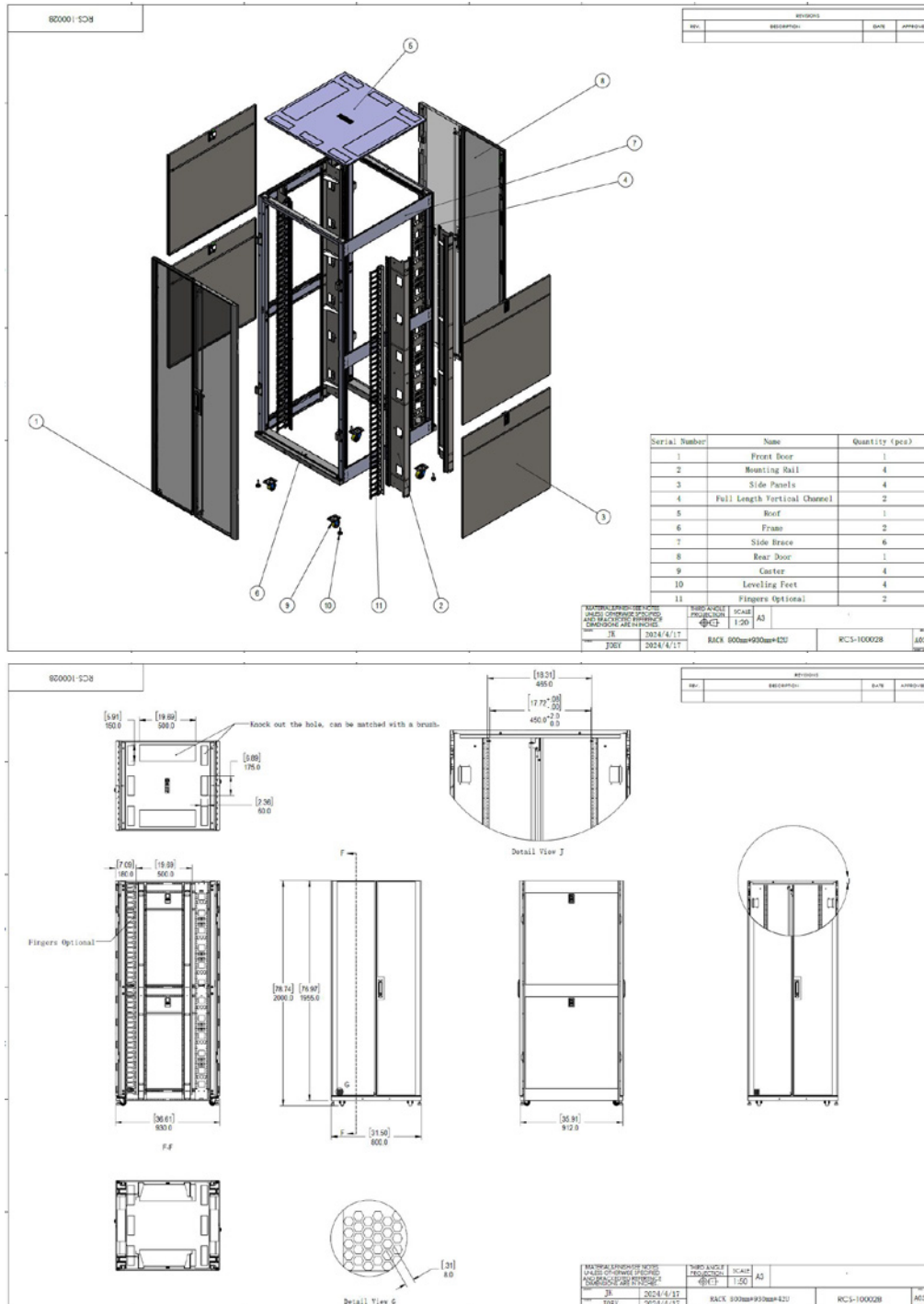


STEP 8:



Cabinet side panel installation

Reference Drawing: 800*930*42U



Reference Drawing: 800*1070*42U

