



NATURAL AIR COOLING MODULAR DATA CENTER FOR 5G MACRO SITES & ENTERPRISE SOLUTIONS

MODEL: PRM-R2BO-5 (OUTDOOR)

PRIME's modular data centers are a great and efficient solution to the growing demand for data communication infrastructure. Our modular data centers are prefabricated plug and play solution that allows for rapid deployment which saves time and money. Another feature is our natural air cooling technology which drastically reduces energy consumption by more than 50% compared to traditional cooling solutions. Each unit features our intelligent software designed to help monitor, optimize operation and provide maintenance alerts. All PRIME's modular data centers are thoroughly inspected and tested by our certified QCs before each unit is shipped out to our customer's project sites.

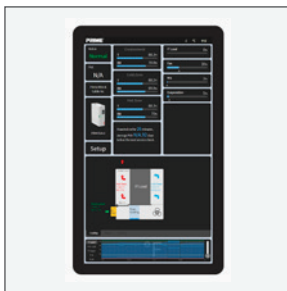


FEATURES & BENEFITS

- Save Time & Money
- Rapid Deployment
- Stable, Reliable & Scalable
- Self-Monitoring
Real-Time PLC Control
- Self-Regulating
Climate Control
- Built-In 4-Way Entry Pallet

APPLICATIONS

- Small Data Centers
- Schools
- Hospitals
- Financial Institutions
- Electronic Sports
- Emergency Services



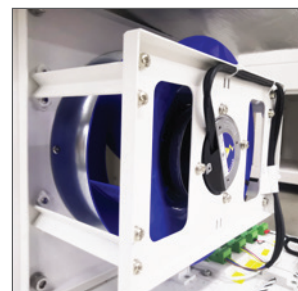
PLC Panel



G4 Air Filters



Evaporative Panel



Cooling Fans



NATURAL AIR COOLING MODULAR DATA CENTER FOR 5G MACRO SITES & ENTERPRISE SOLUTIONS

MODEL: PRM-R2BO-5 (OUTDOOR)

COOLING

Cooling Type: Natural fresh air + Evaporation
Supplemental Cooling: (Optional) DX-direct expansion
Cooling Capacity: 5kW
Internal Operating Humidity: 10% - 95%
Internal Operating Temperature:
60.08°F ~ 80.06°F/15.6°C ~ 26.7°C

POWER DISTRIBUTION

Maximum IT Load: 5kW
Nominal Input Voltage: 200-240VAC, 1 Phase, 50/60Hz
Maximum Input Current: 40A
Power Distribution: Power distribution panel

SPECIFICATIONS

Estimated Weight: 661.4lbs/300kg
Physical Measurements:

Rack Measurements:

86.6in (H) x 29.5in (W) x 57.2in (D)
2200mm (H) x 750mm (W) x 1454mm (D)

MDC Measurements:

86.6in (H) x 63.0in (W) x 71.1in (D)
2200mm (H) x 1600mm (W) x 1805mm (D)

OPERATING CONDITIONS

Elevation: 0 - 3,280ft/1,000m max. 9,842ft/3,000m
Altitude over 1000 meters -
power switch capacity will reduce 1% per 100 meters
Temperature: -4°F ~ 113°F/-20°C ~ 45°C
Humidity: 5% - 100% RH, non-condensing
Application: Outdoor (Indoor available)
Seismic Grade: Optional

PLC MONITORING & CONTROL

DSCV Management System:

Power, cooling, security, environmental monitoring & control, PUE display

Serial Device Server: RS485 Connection, TCP/IP Communication (optional)

Monitoring Points (partial): Input voltage, current, frequency, active power, harmonic measurement, on/off status, cooling temperature, cooling operation status, temperature, humidity, smoke, leaks from drain pan, door access

ACCESS

Door Lock: Intelligent Key

Door Lock Options: Biometric Recognition System (Fingerprint, Facial)

ADDITIONAL FEATURES

L Style Bracket: Installed to 19in/482.6mm rack, load 110lbs/50kg

Lighting: 24V LED light (2pcs)

Water Hose: 5m PVC plastic flexible water pipe (10mm diameter)

Prime Wire & Cable, Inc.
Diamond Bar, CA 91765

primewirecable.com

datacenters@primewirecable.com

909.718.5258