

KOPFJÄGER

WHEN PRECISION
MATTERS



LANGUAGE



KOPFJÄGER

WWW.KJRESTS.COM



REAPER GRIPS

Providing unshakeable, fatigue-free stability in high-stakes situations, Reaper Grip shooting rests keep rifles of all kinds steady for their operators. Ideal for long-distance hunters, law enforcement snipers and all types of shooters in between, Reaper Grips were designed by SWAT members to hold up to the harsh demands of their everyday work. So when you shoot with a Reaper Grip, you can shoot with confidence.



REAPER GRIP SYSTEM



HEAVY DUTY CONSTRUCTION



SMOOTH PAN / TILT



USER FRIENDLY OFFSET GRIP



PROTECTIVE PADDING



ADJUSTABLE TAPERED GRIP



LOCKING 38 MM TO 76 MM GRIP

MODEL KJ86000
 DIMENSIONS (IN/MM) 6,84 X 6,04 X 6,57
 174 X 153 X 167
 VISE WIDTH RANGE (IN/MM) 1,5 - 3 / 40 - 71
 PAN ROTATION ANGLE 360°
 VERTICAL ROTATION ANGLE 87° DOWN, 21° UP
 MOUNTING 3/8" - 16 THREADED HOLE
 MATERIAL ALUMINUM
 WEIGHT (LBS/G) 2,5 / 1134
 INCLUDES CAMERA THREAD ADAPTER



REAPER GRIP DIRECT MOUNT (USE WITH EXISTING BALL HEAD)



HEAVY DUTY CONSTRUCTION



MOUNTS DIRECTLY TO STANDARD HEADS



STANDARD SCREW OR ARCA SWISS



PROTECTIVE PADDING



ADJUSTABLE TAPERED GRIP



LOCKING 38 MM TO 76 MM GRIP

MODEL KJ86006
 DIMENSIONS (IN/MM) 4,18 X 5,75 X 5,04
 106 X 146 X 128
 VISE WIDTH RANGE (IN/MM) 1,5 - 3 / 40 - 71
 PAN ROTATION ANGLE 0°
 VERTICAL ROTATION ANGLE 0°
 MOUNTING 3/8" - 16 THREADED HOLE
 MATERIAL ALUMINUM
 WEIGHT (LBS/G) 1,38 / 626
 INCLUDES CAMERA THREAD ADAPTER

REAPER GRIPS

KOPFJÄGER

WWW.KJRESTS.COM

REAPER RAILS

For those wanting the benefits of a ballhead without all the drawbacks, the Reaper Rail offers both vertical and horizontal travel along with cant adjustment. Available with Picatinny or Arca Swiss mounting options, Reaper Rails don't sacrifice an ounce of stability and maintain Kopfjäger's signature heavy-duty construction designed to tackle any type of environment.

REAPER RAIL PICATINNY



HEAVY DUTY
CONSTRUCTION



SMOOTH
PAN / TILT



USER FRIENDLY
OFFSET GRIP



PRECISE
LONG RANGE
PRECISION



ADJUST
CANT
LOCKING CANT
ADJUSTMENT



DIRECT
MOUNT
DIRECT PICATINNY
MOUNT

MODEL KJ86002
DIMENSIONS (IN/MM) 6 X 5,5 X 6,5
152 X 139 X 165
MOUNT TYPE PICATINNY
RAIL CANT $\pm 11^\circ$
PAN ROTATION ANGLE 360°
VERTICAL ROTATION ANGLE 87° DOWN, 21° UP
MOUNTING $3/8"$ - 16 THREADED HOLE
MATERIAL ALUMINUM
WEIGHT (LBS/G) 1,97 / 894
INCLUDES CAMERA THREAD ADAPTER



REAPER RAIL ARCA SWISS



HEAVY DUTY
CONSTRUCTION



SMOOTH
PAN / TILT



USER FRIENDLY
OFFSET GRIP



PRECISE
LONG RANGE
PRECISION



ADJUST
CANT
LOCKING CANT
ADJUSTMENT



DIRECT
MOUNT
DIRECT ARCA SWISS
MOUNT

MODEL KJ86003
DIMENSIONS (IN/MM) 6 X 5,5 X 6,5
152 X 139 X 165
MOUNT TYPE PICATINNY
RAIL CANT $\pm 11^\circ$
PAN ROTATION ANGLE 360°
VERTICAL ROTATION ANGLE 87° DOWN, 21° UP
MOUNTING $3/8"$ - 16 THREADED HOLE
MATERIAL ALUMINUM
WEIGHT (LBS/G) 1,97 / 894
INCLUDES CAMERA THREAD ADAPTER



REAPER RAILS

KOPFJÄGER

WWW.KJRESTS.COM



TRIPODS

Executing the perfect shot starts with a steady tripod. Our carbon fiber and aluminum tripods ensure rock-solid stability from high-prone to standing positions with 3-position angle locks, reversible center columns and multiple leg extensions.

K700 TRIPOD HEAVY DUTY

**183
TO
67**

UP TO 183 CM EXTENDED
UNDER 67 CM FOLDED

**UP TO
11
KG**

UP TO 11 KG
LOAD WEIGHT

**LEVER
LOCK**

HEAVY DUTY
LEG LOCK LEVERS

**FOAM
GRIPS**

DURABLE FOAM
SOFT GRIPS

**3-
POSITION
ANGLE
LOCKS**

3-POSITION
ANGLE LOCKS

**CENTER
LOCK**

REVERSIBLE
CENTER COLUMN

MODEL KJ85001
MAX OPERATING HEIGHT (IN/MM) 72 / 1829
MIN OPERATING HEIGHT (IN/MM) 10,75 / 273
MAX COLUMN EXTENSION (IN/MM) 14,9 / 380
FOLDED LENGTH (IN/MM) 27 / 686
NUMBER OF EXTENSIONS 3
MAX LOAD (LBS/KG) 25 / 11
LEG LOCK TYPE LEVER LOCK
MATERIAL ALUMINUM
WEIGHT (LBS/KG) 5,5 / 2,5
INCLUDES TRIPOD CASE
CAMERA THREAD ADAPTER

K800 CF TRIPOD CARBON FIBER

**162
TO
48**

UP TO 162 CM EXTENDED
UNDER 48 CM FOLDED

**UP TO
9
KG**

UP TO 9 KG
LOAD WEIGHT

**LOCK
TWIST
LOCK**

HEAVY DUTY
TWIST LEG LOCKS

**CARBON
FIBER**

LIGHTWEIGHT
CARBON FIBER

**3-
POSITION
ANGLE
LOCKS**

3-POSITION
ANGLE LOCKS

**CENTER
LOCK**

REVERSIBLE
CENTER COLUMN

MODEL KJ85002
MAX OPERATING HEIGHT (IN/MM) 64 / 1626
MIN OPERATING HEIGHT (IN/MM) 7,5 / 190
MAX COLUMN EXTENSION (IN/MM) 52,2 / 1325
FOLDED LENGTH (IN/MM) 19 / 482
NUMBER OF EXTENSIONS 4
MAX LOAD (LBS/KG) 20 / 9
LEG LOCK TYPE TWIST LOCK
MATERIAL CARBON FIBER
WEIGHT (LBS/KG) 3,5 / 1,6
INCLUDES TRIPOD CASE
CAMERA THREAD ADAPTER

TRIPODS

KOPFJÄGER

WWW.KJRESTS.COM

AMBUSH

Thanks to the Ambush, box blind hunters no longer have to sacrifice precious floor space in their blind or worry about fatigue from holding their rifles up too long. When locked into place, the Ambush positions your rifle perfectly right above the blind's window ledge and gives shooters, especially youth and disabled hunters, the confidence they need to take precision shots when they matter most.



AMBUSH FULL SYSTEM (KIT INCLUDES REAPER GRIP, AMBUSH SUPPORT ARM, BIPOD)

 HEAVY DUTY CONSTRUCTION	 SMOOTH PAN / TILT	 USER FRIENDLY OFFSET GRIP	 PICK UP AND MOVE EASILY	 MOUNTS ON WINDOW LEDGE
 PROTECTIVE PADDING	 ADJUSTABLE TAPERED GRIP	 LOCKING 38 MM TO 76 MM GRIP	 FIREARM SITS ABOVE THE LEDGE	 LOCKED IN PLACE WHEN SET

REAPER GRIP

ARM & BIPOD

MODEL	KJ85005K
DIMENSIONS (IN./MM)	12,24 X 4,17 X 11,9 311 X 106 X 302
WISE WIDTH RANGE (IN./MM)	1,5 - 3 / 40 - 71
PAN ROTATION ANGLE	360°
VERTICAL ROTATION ANGLE	87° DOWN, 21° UP
MOUNTING	PLACED ON LEDGE
MATERIAL	ALUMINUM
WEIGHT (LBS./G)	4,35 / 1973
INCLUDES	REAPER GRIP AMBUSH SUPPORT ARM BIPOD



AMBUSH SUPPORT ARM

MODEL	KJ85005
DIMENSIONS (IN./MM)	12,24 X 4,17 X 3,4 311 X 106 X 86
MOUNTING	3/8" - 16 THREADED HOLE
MATERIAL	ALUMINUM
WEIGHT (LBS./G)	1,22 / 553
REQUIRES	REAPER GRIP OR REAPER RAIL
INCLUDES	BIPOD CAMERA THREAD ADAPTER SOCKET HEAD SCREW

AMBUSH

REAPER WITH TRIPOD KITS

ACCESSORIES

MODEL | KJ85001K

REAPER GRIP K700 TRIPOD KIT



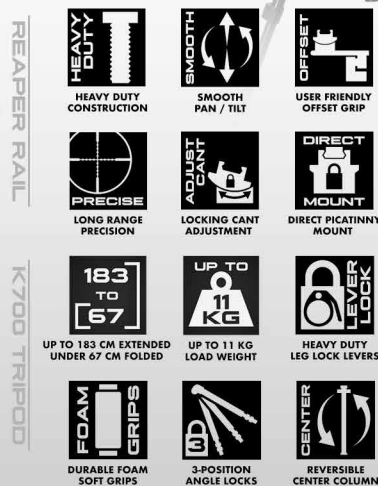
MODEL | KJ85002K

REAPER GRIP K800 TRIPOD KIT



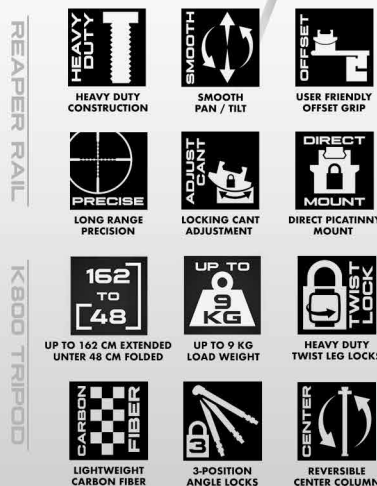
MODEL | KJ85003K

REAPER RAIL K700 TRIPOD KIT - PICATINNY



MODEL | KJ85004K

REAPER RAIL K800 TRIPOD KIT - PICATINNY



REAPER GRIP UPPER ASSEMBLY

MODEL | KJ86001
 DIMENSIONS (IN/MM) | 4,18 X 5,75 X 3,91
 106 X 146 X 99
 VISE WIDTH RANGE (IN/MM) | 1,5 - 3 / 40 - 71
 MATERIAL | ALUMINUM
 WEIGHT (LBS/G) | 1,18 / 535
 INCLUDES | CAMERA THREAD ADAPTER



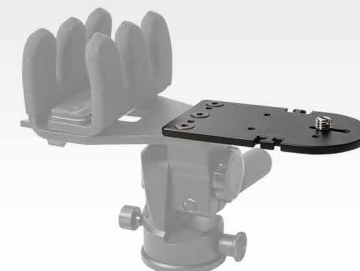
REAPER RAIL UPPER ASSEMBLY (PICATINNY)

MODEL | KJ86004
 DIMENSIONS (IN/MM) | 4,1 X 2,5 X 2,5
 105 X 63,5 X 63,5
 MOUNT TYPE | PICATINNY
 MATERIAL | ALUMINUM
 WEIGHT (LBS/G) | 0,62 / 281
 INCLUDES | CAMERA THREAD ADAPTER



REAPER RAIL UPPER ASSEMBLY (ARCA SWISS)

MODEL | KJ86005
 DIMENSIONS (IN/MM) | 4,1 X 2,5 X 2,5
 105 X 63,5 X 63,5
 MOUNT TYPE | ARCA SWISS
 MATERIAL | ALUMINUM
 WEIGHT (LBS/G) | 0,62 / 281
 INCLUDES | CAMERA THREAD ADAPTER



REAPER RIG ACCESSORY PLATE

MODEL | KJ89002
 DIMENSIONS (IN/MM) | 4,87 X 2,7 X 0,23
 124 X 68 X 6
 MATERIAL | ALUMINUM
 WEIGHT (LBS/G) | 0,25 / 113
 INCLUDES | CAMERA SCREW
 THREE MOUNTING SCREWS



LEVELING HEAD FOR REAPER RIG

MODEL | KJ89000
 DIMENSIONS (IN/MM) | 3,3 X 2,5 X 1,9
 83,8 X 63,5 X 48,3
 MATERIAL | ALUMINUM
 WEIGHT (LBS/G) | 0,67 / 304
 INCLUDES | CAMERA THREAD ADAPTER
 ALLEN KEY



DIRECT MOUNT ADAPTER FOR REAPER GRIP

MODEL | KJ89003
 DIMENSIONS (IN/MM) | 2 X 2 X 1,13
 51 X 51 X 28,7
 WORKS WITH | REAPER GRIP
 MATERIAL | ALUMINUM
 WEIGHT (LBS/G) | 0,2 / 90
 INCLUDES | FOUR MOUNTING SCREWS



K.I.L. STRAP STABILIZING STRAP

MODEL | KJ89001
 DIMENSIONS (IN/MM) | 1 X 55
 25,4 X 1397
 MATERIAL | NYLON
 WEIGHT LIMIT (LBS/KG) | 550 / 249,5
 WEIGHT (LBS/G) | 0,35 / 158
 INCLUDES | CARABINER



ARCATINNY MOUNT ADAPTER (M-LOK)

MODEL | KJ89005
 DIMENSIONS (IN/MM) | 2,75 X 1,5 X 0,7
 69 X 28,1 X 17,8
 MATERIAL | ALUMINUM
 MOUNT TYPE | M-LOK® TO PICATINNY & ARCA SWISS
 WEIGHT (LBS/G) | 0,19 / 86
 INCLUDES | M-LOK® SCREWS



REPLACEMENT REAPER GRIP SLEEVES

MODEL | KJ89004
 DIMENSIONS (IN/MM) | 4,1 X 0,39 X 2,3
 104 X 10 X 58
 WORKS WITH | REAPER GRIP & AMBUSH
 MATERIAL | PVC
 WEIGHT (LBS/G) | 0,06 / 27
 INCLUDES | TWO GRIP SLEEVES



REPLACEMENT TRIPOD FOOT

MODEL | KJ85001.001
 DIMENSIONS (IN/MM) | 1,4 X 1,6 X 1,5
 36 X 40 X 39
 WORKS WITH | K700 TRIPOD
 MATERIAL | RUBBER
 WEIGHT (LBS/G) | 0,03 / 14

MODEL | KJ85002.002
 DIMENSIONS (IN/MM) | 1,1 X 1,1 X 1,37
 28 X 28 X 35
 WORKS WITH | K800 TRIPOD
 MATERIAL | RUBBER
 WEIGHT (LBS/G) | 0,07 / 32

KOPFJÄGER

WHEN PRECISION
MATTERS



Kopfjäger
2201 Heritage Pkwy
Mansfield, TX 76063
817.225.0310
info@kjrests.com

WWW.KJRESTS.COM



Foto: @corysmith936

Kopfjäger
94 Iliyantsi Blvd.
1220, Sofia, Bulgaria
+359 2 434 3287
sales@sellmarkeu.net