

WINGS PHANTOM ORANGUTAN LIMITED EDITION

USER MANUAL



INTRODUCTION

BE THE SICKEST IN THE GAME !

It's not just a tagline , it's **who we are** . Esports and Gaming has truly arrived in India and at Wings, we celebrate the modern Indian gamer with products that reflect the same drive and finesse that goes into the sport.

We are a community of passionate of gaming enthusiasts with the highest standards and the ambition to be the best. It is the same passion with which we add style and performance to every Wings product so you can elevate your game and enjoy the rush of that perfect headshot.

But more than anything - **We are PROUD to be gamers. Just like you.**

Let's Go!

WHAT'S IN THE BOX



- 2N Pairs of Extra Ear Tips(S&L)
- 1N User Manual
- 1N Warranty Card
- 1N Type-C Charging Cable

PRODUCT LAYOUT



1. Charging Case
2. Type-C Input
3. Gaming Lights
4. Microphone
5. Earbuds Touch Control
6. Charging Case Light Indicator

HOW TO PAIR

Before queue-ing up with your squad, **Pair up with us** to ensure maximum victories.

Step 1: Make sure your charging case is powered up. Simply open the lid of the charging case and take out the earbuds. The earbuds will turn ON and will automatically enter the pairing mode.

Step 2: Tap "Phantom" from the smartphone's Bluetooth menu. There is a voice prompt after a successful connection. This indicates earbuds are successfully connected to your device.

Step 3: Congratulations! You are now connected and can start playing media.

Note: In case you do not connect to any device within 5 minutes of entering pairing mode, then both earbuds will automatically turn OFF. Please put the earbuds back into the case and repeat the pairing process.

TOUCH CONTROL USAGE

For better access and functionality during matches, use our **tap controls** to save on those crucial moments between games.



Play/Pause: Double Tap the sensor on any one earbud to pause music. Double tap on any sensor again, on any one earbud to resume playing music.

Changing Songs: Triple Tap on the right earbud to go to next song. Triple Tap on the left earbud to go to previous song.

CALL CONTROLS

Adjusting Volume: Single Tap on the right earbud to increase volume. Single Tap on left earbud to decrease Volume.

Voice Assistant: Long Press for 2 seconds on left earbud to activate voice assistant.

Gaming Mode: Long press for 2 seconds on the right earbud to turn Gaming mode ON, The earbuds will do a breathing light effect .Long press for 2 sec on the right earbud again to turn Gaming Mode OFF.

Answer Incoming Call: Double Tap the sensor on any earbud to answer incoming call.

Hang up Ongoing call: While on call, Double Tap the sensor on any earbud to hang up the call.

Reject Incoming Call: Long press on any earbud for 2 seconds to reject incoming call.

CHARGING THE CASE

Our Charging Speed makes sure to leave your enemies in the dust! So Charge up and get going!!

Note: Please only use a 5V/1A adapter to charge the case as higher voltage adapters can destroy the battery of the case and earbuds.

Low Battery Indicator: When the charging case battery is Low, the case light will start flashing.

During Charging: When charging , the LED light next to the type c port will be flashing

Fully Charged: When the case is fully charged the LED light next to the type c port will turn to always on .

CHARGING THE EARBUDS

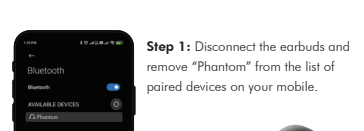
Tired from defeating your rivals? Well our earbuds need a quick break too, before they are back on the field with you .

Earbuds charging: When earbuds are placed inside the charging case, the lights on the earbuds will turn ON indicating that the earbuds are being charged.

Earbuds completely charged: When the earbuds are completely charged, the lights on the earbuds will go OFF.

RESETTING THE DEVICE

Please follow the below steps when you see two "Phantom" in your Bluetooth menu on your device or you can hear music through only 1 earbud. This means the left and right earbuds have not auto paired with each other:



Step 1: Disconnect the earbuds and remove "Phantom" from the list of paired devices on your mobile.

Step 2: Double Tap the Earbuds's sensor , light will flash quickly , then touch 5 times to clear the pairing data , light goes off

Step 3: Put them back into charging case and take out from the charging case, "Phantom" is ready to use as it automatically turns on and pairs again.

Reset process is now complete and you will be able to hear music through both earbuds.

TECHNICAL SPECIFICATIONS

PARAMETERS	VALUES
Bluetooth Version:	V5.3
Effective Distance:	15m
Impedance:	32Ω
Product Weight:	43g
Speaker Size:	12mm
Total Play Time:	About 30+ Hours
Play Time In Single Charge:	About 8 Hours
Talk Time:	About 25 Hours
Standby Time:	About 250 Hours
Case Charging Time:	1.5 Hours
Earbuds Charging Time:	1 Hour
Rated Input:	5V/1A
Frequency:	20Hz~20KHz
Water and Sweat Resistant:	IPX5

*T&C Apply

SAFETY AND MAINTENANCE

Please read below suggestions in order to help prolong the product lifespan and clearly understand the warranty clauses:

- Keep the product dry, do not put it in humid conditions to avoid short circuit.
- Do not expose it to the peak sun or high heat for extended period of time as this will shorten lifespan of electronic components, damage battery and deform some plastic parts.
- Do not put it in cold circumstance to avoid damage to PCB board.
- Do not attempt to dismantle the product, as it maybe unsafe especially for non-professionals.
- Do not use chemical products, detergent, oily liquids to clean the item.
- Do not scratch the surface with sharp items to avoid damaging the case and appearance.
- Do not charge the case for more than 5 hours to avoid loss in battery life.
- Avoid hearing music at maximum volume for long periods of time as this can affect your hearing and is not advisable.

Note: Any damage to the product that is not manufacturing defect will lead to warranty being rendered null and void. Therefore, please take utmost care of your product.