

POPYLIGHT

POPYLIGHT

Petit plateau tout en courbes, composé d'un pied en arc de cercle et surmonté d'un disque, le tout en bois de frêne surmonté d'un petit globe opalin.

Deux coloris de bois : frêne blanchi et frêne lasuré noir.

Composition :

- Pied de lampe en bois tourné
- Globe blanc mate
- Ampoule G9 led 2.5 W
- Cordelière avec interrupteur prise 2 broches

Small curved tray, composed of an arched base and topped by a disc, completely made of ash wood equipped with a small opaline globe.

Two wood colours: bleaches ash and black stained ash.

Composition :

- Turned wooden lamp base
- White matte globe
- G9 led 2.5 W bulb
- Cord with 2-pin plug switch

Both lighting and decorative element, POPY is the sweet name given to a small curved tray, composed of an arched base and topped by a disc, completely made of ash wood and handcrafted by the expert hands of a woodturner in Belgium.

Placed on a table or console, POPYPLATE can hold your jewellery, paper clips or other small everyday objects.

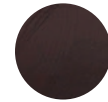
In its refined version, POPYLIGHT is equipped with a small opaline globe that proudly stands on the tabletop and diffuses a soft, subdued light.

With its design appeal and dual functionality, POPY will quickly become both an indispensable and decorative element in any interior.

POPY is available in bleached ash or black stained ash and is sold as a set POPYPLATE (tray function only) or POPYLIGHT (tray + lamp function with white or black cable).



frêne blanchi
bleached ashwood



frêne lasuré noir
black stained ashwood