

Height: 14.1cm

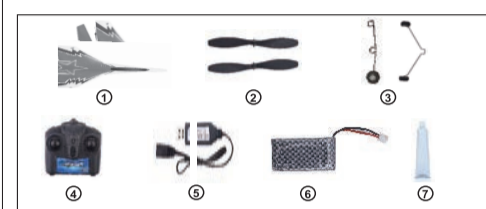
Width: 42.4cm

REMOTE CONTROL AIRPLANES MANUAL (9085)

PLEASE READ CAREFULLY BEFORE FLYING. 1. The packaging and instructions contain important information and should be retained. 2. The pictures in the packaging and instructions are not exactly the same as the actual product, please refer to the actual product.

List of products

This product contains the following items. Please read carefully before using. If there is any lack of parts, please feel free to contact our sale agent.



- ① Airplane
- ② Spare propeller
- ③ Landing gear
- ④ Remote control
- ⑤ Charger
- ⑥ Battery
- ⑦ Special glue

Remote control



- 1. Power light
- 2. Throttle Control Lever
- 3. Power switch
- 4. Direction Control Lever
- 5. photo button: Click and take a picture.
- 6. Camera button: press start camera, then press stop camera.

Note: The remote control must be fitted with sections 1.5 V "AA" dry batteries (The product is not subject to purchase)

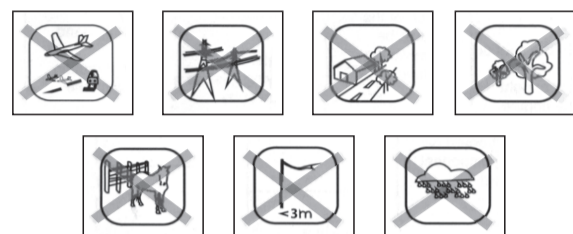
-1-

HINT

Thank you for purchasing. This product is designed for beginners. You can enjoy the flying infinite charm by using our product, even if you have no experience before.

For your safety and better control, please read the manual carefully before using. Thank you!

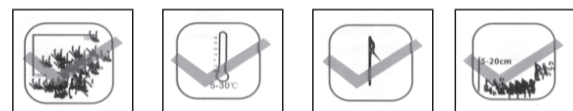
Note: For better control, first flight should be done in a large open area in calm condition.



- Never use the model near packing areas when there are cars.
- Do not play in thunder day.
- Do not use the model near highway, high-voltage, airport, buildings, trees, lakes and rivers.
- Keep distance from propellers when they are working, in case of turning injuries.
- Do not try to catch the model while flying, or it might cause to injuries.
- Children under age of 14 should not use the model without adult's accompany.

Tip:

- We suggest you flying the model at the temperature about 15-30°C sunny days, you'd better wear sun glasses for protect your eyes. (to prevent sand blow into eyes or sunlight hurting)
- Flight is an exciting sport, it will depletes your energy at the same time bring you happiness. So we suggest you carrying water and food when out for.
- Flight is an exciting sport, it will depletes your energy at the same time bring you happiness. So we suggest you carrying water and food when out for.



-2-

充电说明

BATTERY RECHARGING



- Connect the white plug of the battery to the charging cable and plug the USB plug into the socket. At this time, the red light is always on and the green light flashes, indicating that it is charging.
- When the red light is off and the green light is always on, it means that the charging is complete. The charging time is about 40 minutes.
- If the red light flashes, indicating that the charger is short-circuited or the battery is damaged, please replace it in time.

DECODING

SIGNAL SYNCHRONIZATION FOR 2.4GHz

- Turn on the power of the airplane, the indicator on the airplane will keep flashing, it shows the airplane is pairing signal.
- Push the throttle lever to the lowest position and turn on the power of the controller, the indicator will keep flashing, it shows the controller is pairing signal.
- When both the indicators on the airplane and the controller stop flashing and keep light on, it shows the synchronization is successful. You are now able to control the airplane

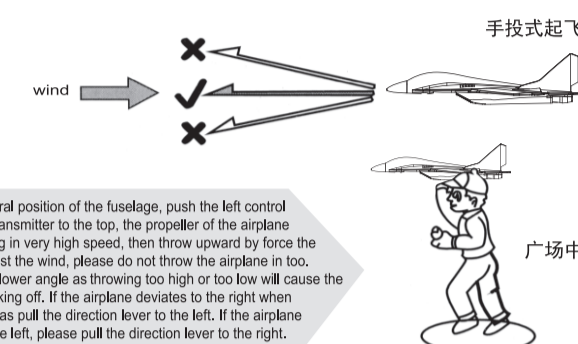
FLIGHT SAFETY

- Please pay attention to distinguish between the left and the right. The L blade corresponds to the L side of the fuselage while the R blade corresponds to the R side of it.
- For test flight, please choose a day without wind or little wind and the place without buildings or tall obstructions like trees. It is strictly prohibited to make the test flight near crowd. When there is wind, please go against the wind!

-3-

HAND THROWING TAKING-OFF

Key points: please observe before flight and confirm the wind.

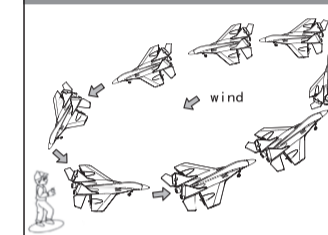


Hold the central position of the fuselage, push the left control lever of the transmitter to the top, the propeller of the airplane will be rotating in very high speed, then throw upward by force the airplane against the wind, please do not throw the airplane in too higher or too lower angle as throwing too high or too low will cause the difficulty in taking off. If the airplane deviates to the right when taking off, please pull the direction lever to the left. If the airplane deviates to the left, please pull the direction lever to the right.

TAKE OFF FROM THE GROUND

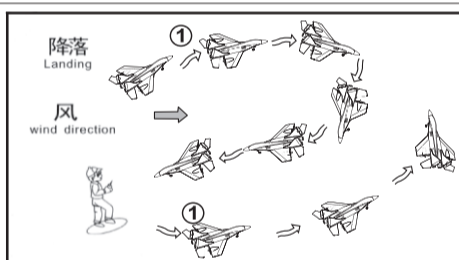
Place the airplane on the level ground, push the throttle lever of the transmitter to the top and keep still. The airplane will take off after gliding in a straight for 10 meters. If the airplane won't fly in a straight line or deviate to the right, please pull the direction lever to the left. If the airplane deviates to the left, please pull the direction lever to the right

FLYING



- Keep the aircraft flying in the wind ward area and this can prevent it flying far tail the wind.
- Real-time observe the aircraft attitude and adjust its spiral direction and flight velocity.

-4-



During the process of flying, if you have pushed the throttle lever to the top, however, the airplane still has difficulty in climbing up. That represents insufficient power with the battery. This time, please be ready for landing immediately. First of all, control the airplane to fly to the anti-wind area and keep about 30 meters away from yourself, then control the airplane to an appropriate height while release the throttle control lever. When the airplane flies to an appropriate height, you can control the airplane nose to face the operator, then keep the airplane fly in a straight with airplane nose facing to your own anti-wind position and make landing. If you have enough experience, you can control the control lever by Release-Push and Push-Release alternatively and pull or push the direction key in reversing direction to keep the airplane make landing slowly until landing stably and safely.

DEBUGGING

This product has its own gyroscope, in the course of flight, it can automatically correct the plane's left and right stability and flight straight line; but if the aircraft structure deformation exceeds a certain range, the gyroscope can not completely correct the aircraft's flight attitude, at this time, it is necessary to manually adjust the aircraft structure to make it symmetrical left and right.



If the airplane can not rise up its nose when taking off, you can trim the level tail wing upward.

-5-



If the ascending angle is too big when taking off, you can trim the level tail wing downward.

DIRECTION OF FLYING EXPERIENCE

Few people can operate it well in the first time flying this model. The main reason is that they do not have a better understanding of the spatial concept about which position the flying model lies in 3D space. First of all, please make clear firstly the function of each part of the transmitter and its corresponding flying gesture, especially the directional issue of the flying model. When the tail of the airplane is pointing to yourself, please pull the direction lever to the left and the airplane nose will turn to the left. When you pull the direction lever to the right, the nose of the airplane will turn right. If the nose of the airplane points to yourself, then the pulling direction of the direction lever will be contrary with the turning direction of the nose of the airplane.

The acceleration or deceleration of the throttle lever on the transmitter should be made according to the flying gesture of the airplane. During the process of flying, if the nose of the airplane rises up too much, please decelerate; if the nose of the airplane is turning downward, please accelerate. Keep operating the airplane in this way, you can keep stable flying. If the airplane needs to climb up, please accelerate first. When the airplane rises up, please release the acceleration, then keep level flying state. If the airplane needs to make descending, please release the acceleration and then the airplane will be landing. When the airplane descends to the right height you want, please accelerate and keep the airplane in level flying state.

-6-

During the course of flying, the steering of the airplane is finished by the direction lever on the right. If you need to turn left, please pull the direction lever to the left. If you need to turn right, please pull the direction lever to the right. If you want the steering of the airplane smarter, please combine operating both the throttle lever and direction lever. Accelerate while pulling the direction lever (the better mix using both the two control levers in touching way).

TROUBLESHOOTING

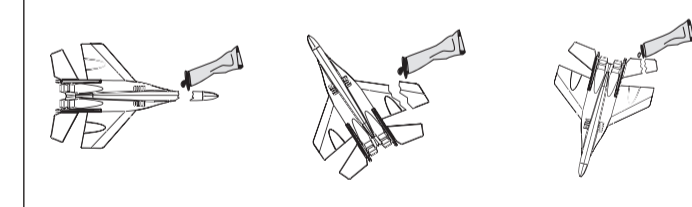
Break down	Reason	Expel
The airplane can not take off normally	1. Battery is exhausted 2. Incorrect hand-throwing angle 3. The airplane can not fly in a straight line when gliding.	1. Charge the battery 2. Throw the airplane by hand in a correct way 3. Trim it and use the direction lever to make the airplane glide in a straight
The airplane loses the balance and falls off suddenly during flying	1. Push the throttle lever to the maximum position 2. Keep pulling the direction lever to one direction 3. The pulling direction of the direction lever should be consistent with the deviating direction of the airplane	1. Accelerate or decelerate according to the flying gesture 2. Pull the direction lever by touching way 3. The pulling direction of the direction lever should be contrary with the deviating direction of the airplane
The airplane makes abrupt left or right turning after taking off.	1. The tail vertical wing deviates to the left (right) 2. The rotating speed of the left engine is inconsistent with the right engine	1. Trim the tail wing to the right or to the left 2. Trim the left trimmer or right trimmer, replace the engine

-7-

The airplane climbs up too slowly	1. Insufficient power with the battery 2. Overheat with the airplane engine	1. Charge the battery 2. Let the engine cool down before flying
Switch on the power, the propeller will make auto rotation.	1. Load the battery upside down 2. The component of the circuit board is damaged 3. Water seeps into the airplane	1. Connect the battery in a correct way 2. Replace the circuit board or replace with new component 3. Dry the circuit board

NOTES

If the fuselage is damaged, please use the special-purpose glue or transparent tape to repair it.



-8-