

luxo **ARCH** SERIES

LWPA

Anaheim

ADJUSTABLE WALLPACK

12W - 120W

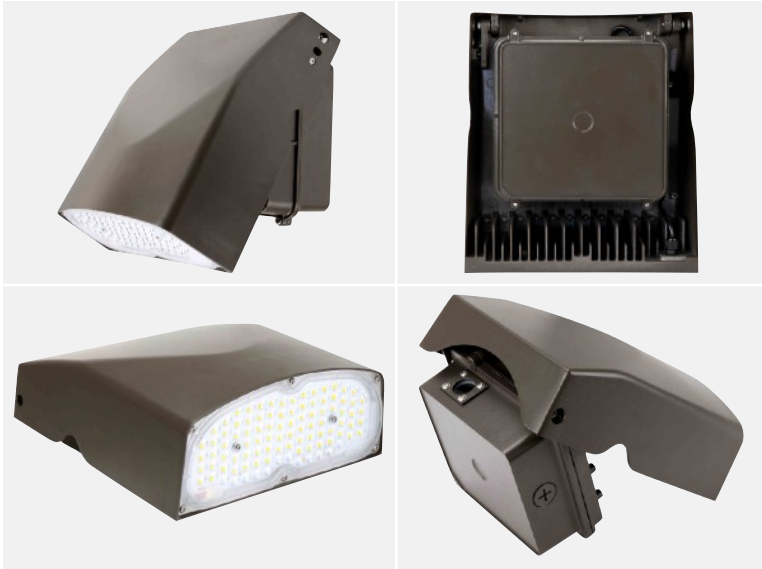
COMMERCIAL GRADE

PRODUCT OVERVIEW

The luxo **ARCH** LED adjustable slim wall pack is designed with modern & futuristic architectural look. It provides a low-profile style with the power equal to traditional wall-mount luminaries.

Featuring adjustable tilt of up to 90degrees, the LWPA-series provides for a variety of applications for building perimeter, entrances, stairways and security lighting.




PROJECT DETAILS

Project Name	
Fixture Schedule	
Product Number	
Notes	

KEY FEATURES

- WEATHER RESISTANT, SEALED DIE-CAST ALUMINUM
- SUITABLE FOR EXTREME APPLICATIONS REQUIRING 3G TESTING PRESCRIBED BY ANSI C136.31
- OPTIONAL PHOTOCELL ALLOWS FOR SECURITY AND OPTIMIZED EFFICIENCY
- TRADITIONAL METAL HALIDE OR HIGH-PRESSURE SODIUM DESIGN
- MOUNTS DIRECTLY TO WALL SURFACE OR J-BOX
- THERMALLY ISOLATED DRIVER DESIGN
- REPLACES UP TO 800W MH

MODEL SPECIFICATIONS

Model	Watt	Lumens	Voltage	CCT	LPW	Replaces
LWPA12	12W	1,560LM	120-277V	4000K 5000K	130LM/W	100W MH
LWPA27	27W	3,600LM	120-277V	4000K 5000K	133LM/W	100W MH
LWPA40	40W	5,200LM	120-277V 347-480V	4000K 5000K	130LM/W	175W MH
LWPA67	67W	8,800LM	120-277V 347-480V	4000K 5000K	131LM/W	250W MH
LWPA80	80W	10,500LM	120-277V 347-480V	4000K 5000K	131LM/W	320W MH

KEY SPECIFICATIONS

- **Housing:** Durable Die-Cast Aluminum
- **Input Voltage:** 120-277Vac or 347-480Vac
- **Operating Temp:** -40°F – 130°F
- **IP:** UL Wet Location Listed
- **PF:** >0.9 Non-Flicker
- **Efficacy:** >130LM/W
- **Dimming:** 1-10V
- **THD:** <20%
- **CRI:** >70

APPLICATIONS


Pathways



Entryways



Perimeter



General Public

ORDERING GUIDE

Model Series	Watt (W)	CCT (K)	Voltage (V)	Finish (y)	Photocell (a)
LWPA LED Adjustable Wall Pack	12 12W 27 27W	40 4000K 50 5000K	U 120-277V	B Black D Dark Bronze * W White	Blank None * PA 120-277V
	40 40W 67 67W 80 80W		U 120-277V H 347-480V		

* Default option

Choose Your Model Specifications Above:

LWPA	12	40	U	D	—
------	----	----	---	---	---

Example Ordering Number: LWPA12-40-UD

WARRANTY



The lesser of 7-Years after shipment by Seller, or 75,000-Hours of use.

ARCHIPELAGO will not under any circumstances whether as a result of breach of contract, breach of warranty, tort, strict liability or otherwise be liable for consequential, incidental, special or exemplary damages including but not limited to, loss of profits or revenues, loss of use of the above product or any other goods or associated equipment or damage to any associated equipment, cost of capital, cost of substituted products, facilities of services, downtime cost, or claims of claimant's customers. ARCHIPELAGO's liability on any claim of any kind for any loss or damages arising out of, resulting from or concerning any aspect of this agreement of from the product or services furnished hereunder shall not exceed the price of the specific product or products listed above which gives rise to the claim. This warranty gives the claimant specific legal rights. The claimant may also have other rights, which vary from state to state.

For a complete documentation of ARCHIPELAGO Lighting, Inc. warranty and limitation of liability, please refer to www.archipelagolighting.com.

CERTIFICATIONS



QUESTIONS?

ARCHIPELAGO LIGHTING, Inc.

Headquartered:

4615 State Street, Montclair, CA 91763

Production Facility:

7345 Sycamore Canyon Blvd, Riverside, CA 92508

www.archipelagolighting.com

sales@archipelagolighting.com

t: (866) 912-3220

f: (909) 627-2887

ARCHIPELAGO LIGHTING

Archipelago Lighting, Inc. is a leading prime manufacturer of commercial and residential lighting products in USA and China. We are a team of passionate lighting professionals whose goal is to improve life through disruptive LED lighting products. We manufacturer a wide variety of products to support the growing adoption of energy efficient LED.

