



#C045

Sewer's Little Helper

Intermediate

DIFFICULTY

Intermediate - Approx. 2 hour

MATERIALS

Makr paper mache mannequin
Craft prints fabric
Pink Polypop plain fabric
Pink and white thread
Makr pink ribbon
Boutique cotton lace
Sullivans grip it sticky back fastner
Birch elastic 13mm
Beading wire 20 gauge
Pearl
Round drink coaster
Paper mache mini box
Fairy floss fill

EQUIPMENTS

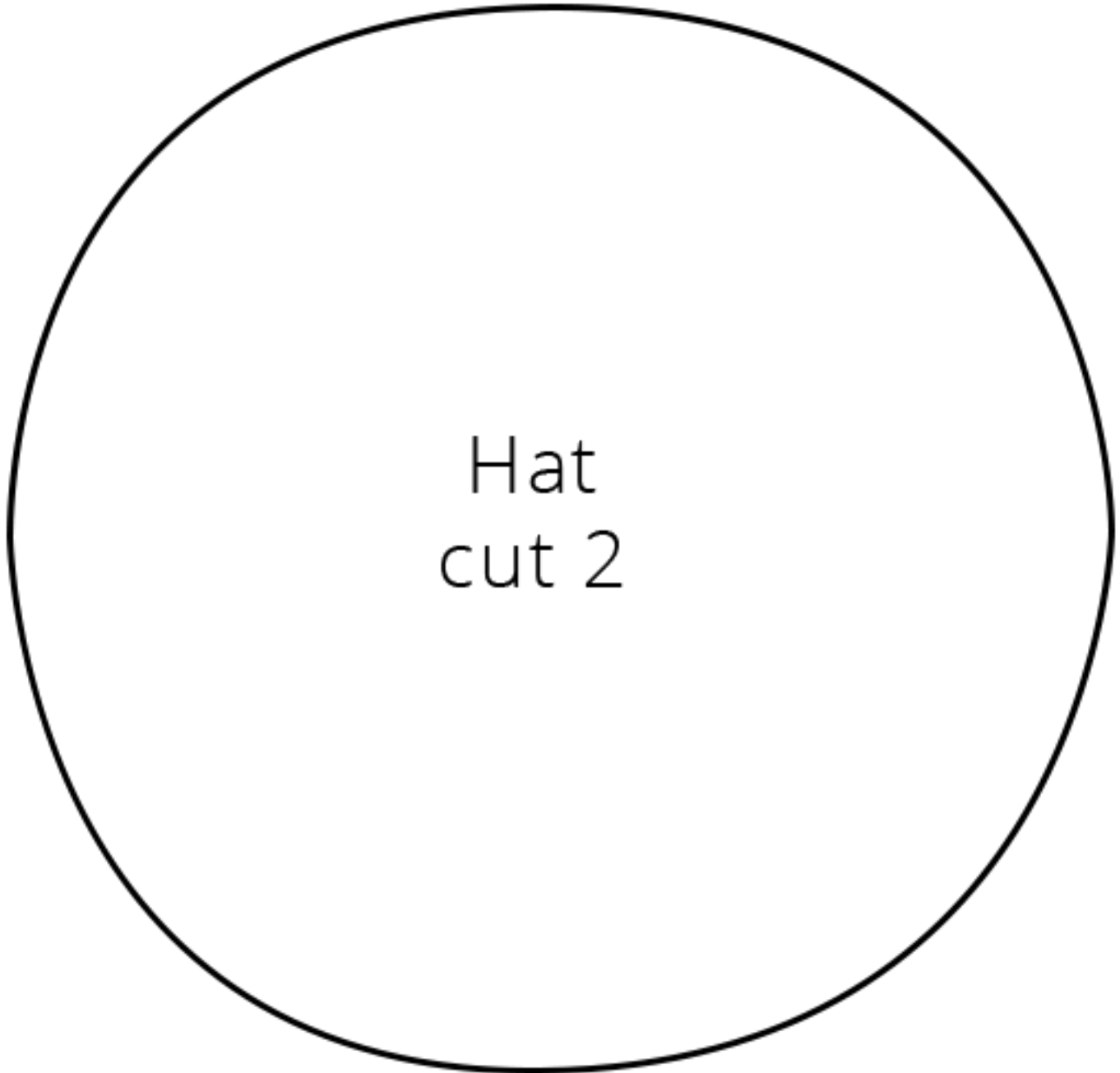
Templates
Sewing machine
Pins
Fabric scissors
Side cutters
Needle
Hot glue gun / glue stick

STEPS

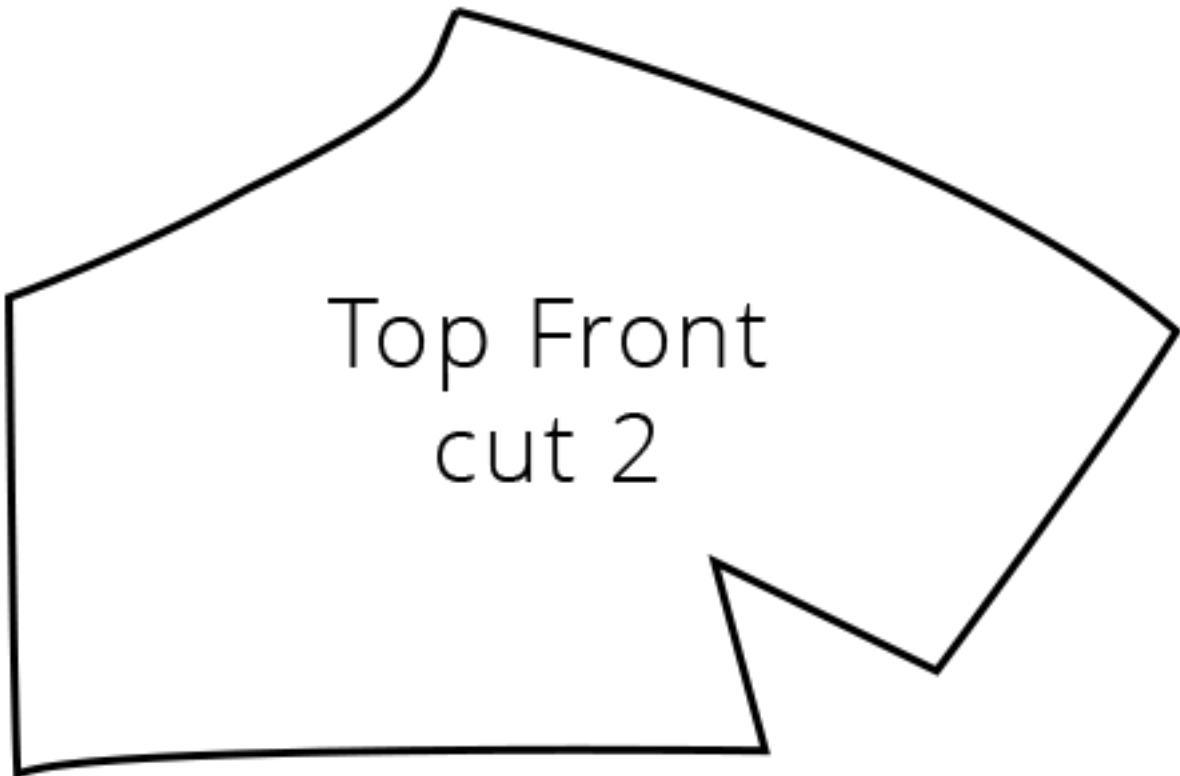
1. To make the top, cut template from pink fabric.
2. Sew along the shoulder seam. Hem the sleeves with lace. Sew the sides closed. Hem the bottom with lace. Hem neckline and sew lace to finish it off. Hem front seam. Use Sullivans grip it sticky back circle fastener to hold the top together.
3. To make the skirt, cut template from pink fabric.
4. Sew along the side seams. Using a zig zag stitch sew elastic at the top of the skirt slightly stretching the elastic while you sew.
5. Hem the bottom of the skirt with lace.
6. To sew the apron, cut the template from craft prints
7. Sew the hem of the whole apron. Sew pink ribbon at the top of the apron for the straps. Fold and iron the hem of the pocket. Pin in place and sew. Sew some lines into the pocket to create dividers.
8. To sew the hat, cut template from craft print fabric.
9. Sew running stitch around the circle and place round drink coaster inside and pull close. Tie it off. Glue Makr pink ribbon around the box. Make a bow and glue it in place.
10. Sew a running stitch on the other circle and fill it with fairy floss fill and pull tight. Tie it off. Glue the top of the hat to the inside of the box and then glue the box to the brim. Use Sullivans grip it sticky back circle fastner to hold it
11. To make the jewelry, cut a piece of jewelry wire and thread a pearl and twist it together.

Get social with us! @lincraft





Hat
cut 2



Top Front
cut 2

