



peerhelpers  
A ThriveWay Program **PLUS**

*Improve student behaviors and wellness with our proven program!*

*prevention & peer-to-peer support for kindergarten–12th grade*

**25%**  
of students  
are chronically  
absent <sup>1</sup>

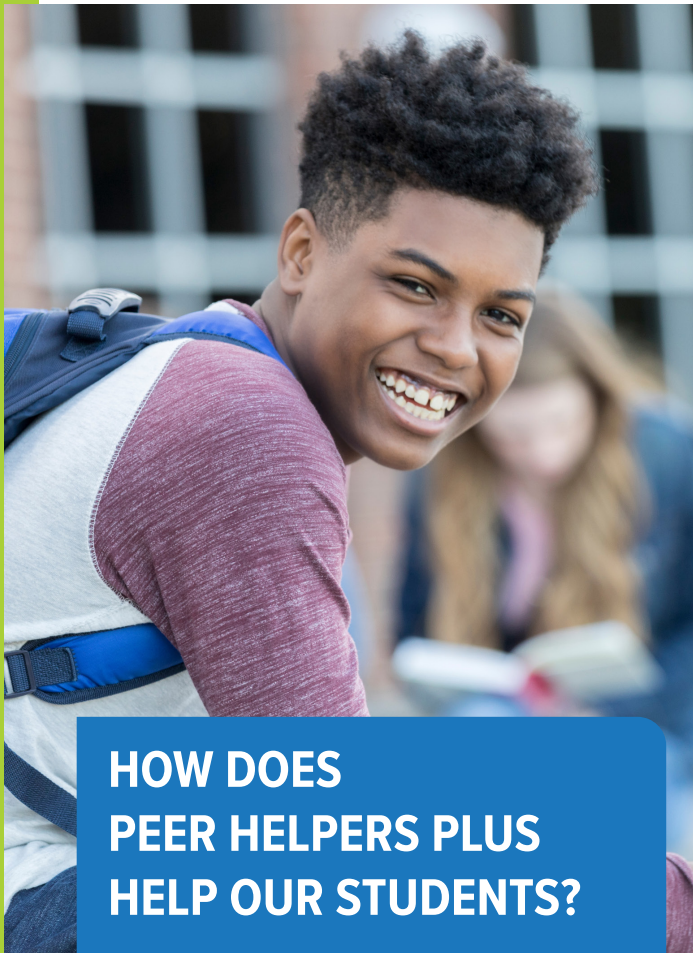
**1 in 5**  
students ages 12-18  
experience bullying  
nationwide <sup>2</sup>

**14%**  
of HS students do  
not graduate on time  
in the USA <sup>1</sup>

**1 in 7**  
children are abused  
& neglected <sup>2</sup>

**36%**  
of students with a  
disability dropped  
out of HS <sup>1</sup>

<sup>1</sup>NCES <sup>2</sup>CDC



## HOW DOES PEER HELPERS PLUS HELP OUR STUDENTS?

- Builds **RESILIENCY** skills
- Promotes & educates on **PREVENTION** of unhealthy behaviors
- **SUPPORTS** through **LIFE STRUGGLES** which shift focus from academics
- Decreases disciplinary problems resulting in **SAFER SCHOOLS**
- **DECREASES AT-RISK** / unhealthy **BEHAVIORS**
- Increases **CONFLICT RESOLUTION** resources
- **IMPROVES** attendance, grades, & **GRADUATION RATES**
- Increases **COPING SKILLS, HAPPINESS,** and **GENERAL LIFE SKILLS**

suicide is the **2<sup>nd</sup>**  
leading cause of death  
for 10-34 year-olds <sup>2</sup>

# HOW DOES IT WORK?

## TIER 1

**path** Prevention & Awareness for Total Health

Equipping all students with life skills and solutions for bullying, abuse, mental health/suicide, and substance abuse at each grade level

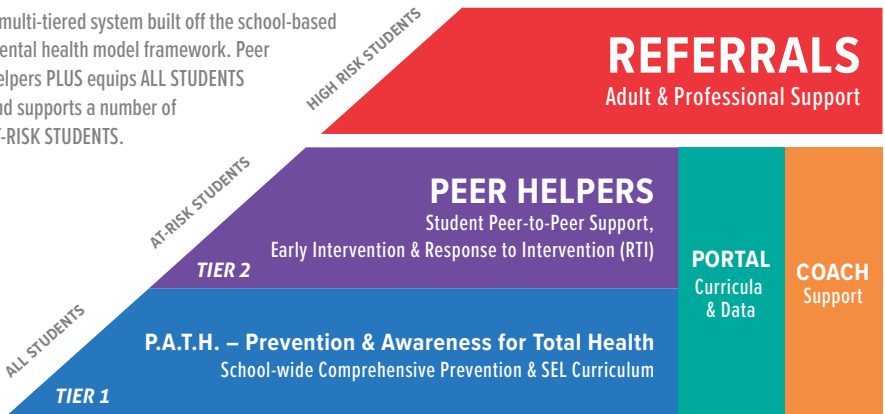
## TIER 2

**peerhelpers** Peer-to-Peer Support

Empowering a group of diverse students within your school to provide assistance and support to their peers when they need it most

## METHODOLOGY

A multi-tiered system built off the school-based mental health model framework. Peer Helpers PLUS equips ALL STUDENTS and supports a number of AT-RISK STUDENTS.



## + 8 Programs in 1

- *Bullying Prevention Program*
- *Suicide Prevention Program*
- *Substance Use Awareness Program*
- *Abuse / Sexual Abuse Awareness Program*
- *Student Peer-to-Peer Support Program*
- *Survey Tool – Pre & Post Data*
- *Leadership Development Program*
- *Real Time Data and Reports*



## *Our Roots. A Beautiful Legacy.*

In 1997, after losing their daughter Jennifer to suicide, the Moore family and close friends established a foundation to provide support, understanding, and positive reinforcement to young people in their community through peer helping programs. Over time, the Jennifer Claire Moore Foundation expanded their scope beyond Baldwin County with ThriveWay, creating Peer Helpers PLUS – a comprehensive, peer-to-peer prevention and support program based on 20 years of research and accomplishments, aimed at helping youth.



**LEARN MORE & SCHEDULE A FREE CONSULT**

**ThriveWay.com | [info@thriveway.com](mailto:info@thriveway.com) | 844.705.1981**