

440mm



# WALL MOUNTED WASHING MACHINE INSTALLATION GUIDE

Please read this guide carefully before installation

This direction is upward

This direction is upward

Mounting hole

Mounting hole

## ⚠ MATTERS NEEDING ATTENTION:

1. This product must be installed by professional after-sales personnel, otherwise the product failure caused by it cannot be included in the scope of warranty.
2. The expansion bolt must be installed on the solid wall, the specification of the drill bit for opening is 14, and the drilling depth is 70-75mm on a solid wall. Recommended to sufficiently brace the machine if installing on RV or caravan walls.
3. Please avoid wires, water pipes, gas supply pipelines, etc. inside and outside the wall.
4. When the water inlet pipe is connected to the water inlet tee and water inlet valve, ensure that the insertion depth is more than 15mm, otherwise water leakage is easy to occur.
5. After installation, power on the machine to check whether there is water leakage.
6. The connected power supply must have a reliable grounding wire.
7. There shall be no power socket under the washing machine, and there shall be no faucet, table top and other obstacles affecting installation, maintenance and other operations within 5cm at the bottom.

If the installation position specified by the user does not meet the installation requirements of the product, but the user still insists on installation, all consequences arising there from shall be borne by the user, and the manufacturer shall not bear any responsibility.



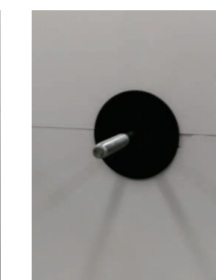
### 1. DETERMINE WALL TYPE & INSTALLATION POSITION

Before installation, the user shall confirm with the property whether the installation wall is solid cement wall or solid load-bearing wall, and provide drawings related to wall description. The washing machine must be installed on solid cement wall or solid load-bearing wall.

Note: for high-grade special wall (such as marble), the user shall find a professional to drill the hole by himself, and the company is only responsible for the installation after sales.

The user shall confirm the installation height of the product according to the actual situation, and draw the bottom installation reference line with the help of a level ruler. The reference line height is recommended to be about 30cm downward from the user's chest height.

Align the bottom of this installation guide with the installation reference line and paste it on the installation wall smoothly.



### 2. INSTALL THE EXPANSION BOLT

Avoid the wires, water pipes, gas supply pipelines and other lines inside and outside the wall. Use an impact drill to drill according to the installation hole position in this installation guide (drill bit specification 14). The hole depth is 70-75mm.

Knock the expansion bolt into the mounting hole, then put on the washer and nut, properly pre-tighten the expansion bolt, and then screw out the nut and washer for spare.

Put 1 rubber shock pad on each bolt, 4 in total.



### 3. REMOVE THE HOUSING

After placing the product flat, remove the two screws at the top and at the bottom of the housing. Place the screws for spare.

Remove the housing.



### 4. INSTALL WATER INLET PIPE AND DRAINAGE PIPE

Thread the water inlet pipe from the back of the washing machine base to the front of the base, and then insert the water inlet pipe into the water inlet valve with an insertion depth of at least 15mm.

Put the drain pipe into the drain joint and install the clamp.

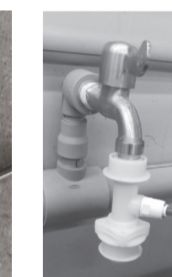
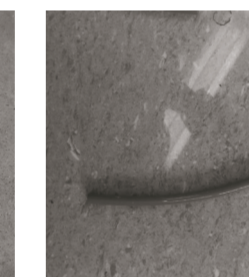
Drain pipe must not be twisted or bent. Drain hose requires a minimum of 100mm straight length from machine.



### 5. INSTALL THE WASHING MACHINE AND FIX THE NUT

Insert the four mounting holes of the washing machine base into the four expansion bolts (pay attention to the position where the water inlet pipe passes through the washing machine base, and the washing machine base cannot press the water inlet pipe and drainage pipe).

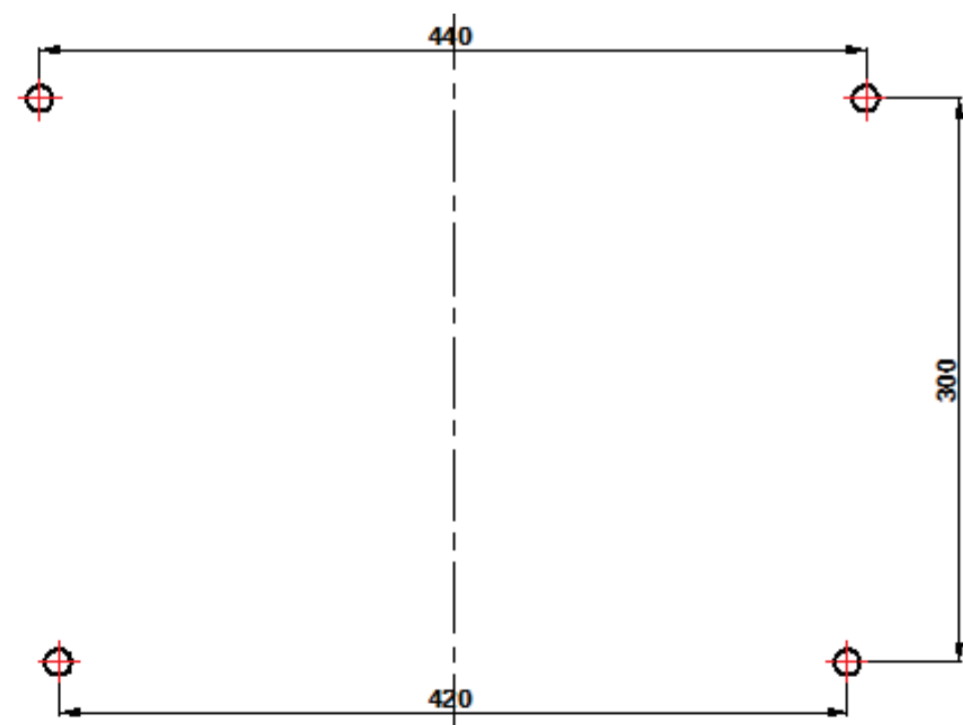
Tighten the flat washer, spring washer and 2 nuts on the expansion bolt.



### 6. ARRANGE THE WATER INLET AND DRAINAGE PIPES.

Insert the water inlet pipe into the water inlet tee joint (the insertion depth shall be at least 15mm), and then install the water inlet tee joint on the faucet.

## DIMENSION DESCRIPTION OF MOUNTING HOLE



Mounting hole

Mounting hole

420mm

aussietraveller.com.au  
PROVIDING FOR HAPPY CAMPERS SINCE 1988

NET WEIGHT: 19kg  
GROSS WEIGHT: 23kg