

# **CARAVAN ACCESSORIES**

**CAMPER TRAILER COVERS**

**CARAVAN COVERS**

**POP-TOP COVERS**

**GAS BOTTLE COVERS**

**XT MATS**

**FLOORING OPTIONS**

**SCREW IN PEGS**

**PEGS, POLES & ROPES**

**EZY ANCHOR PEGS**

**MINI OUTDOOR HD LED PROJECTOR**

**OUTDOOR SMART PROJECTOR & SCREEN**

**INFLATABLE FURNITURE**

**QUELL FIRE SAFETY**

**TV BAG**

## CAMPER TRAILER COVERS



**The Aussie Traveller premium camper trailer covers deliver the best quality protection and functionality.**

Our range of premium Camper Trailer covers have been designed and manufactured to protect your vehicle from the harsh Australian elements. Available in a selection of sizes, all models feature a waterproof breathable side panel, reinforced skirt and easy-to-fit design. Our range of lightweight, premium covers will be sure to keep your vehicle in pristine condition for years to come.



### CAMPER TRAILER

SIZE (ft)	DIMENSIONS (cm)	PART NUMBER
10-12'	370x225x135	07000000006070
12-14'	430x225x135	07000000007070
14-16'	490x225x135	07000000008070

### FEATURES:

- Lightweight and water-resistant
- Breathable fabrics and ventilation flaps allow moisture to escape, minimising the development of rot and mildew
- UV 50+ rated roof provides protection against the harsh Australian sun
- Heavy-duty skirt with nylon clips, and reinforced tabs with nylon straps
- Double stitched reinforced elastic corners
- Easily adjusted to fit securely and provide maximum protection against all weather conditions
- Storage bag included



## GET IN TOUCH WITH OUR FRIENDLY TEAM

1300 663 868 | [enquiries@aussietraveller.com.au](mailto:enquiries@aussietraveller.com.au) | [aussietraveller.com.au](http://aussietraveller.com.au)

BRISBANE SHOWROOM: 11-15 Oasis Court, Clontarf QLD 4019 | MELBOURNE SHOWROOM: 235 Barry Road, Campbellfield VIC 3061

## CARAVAN COVERS



### The Aussie Traveller Premium Caravan Covers deliver the best quality protection and functionality.

Our range of Premium Caravan Covers have been designed and manufactured to protect your vehicle from the harsh Australian elements. Available in a selection of sizes, all models feature a waterproof breathable side panel, reinforced skirt and easy-to-fit design. Our range of lightweight, premium covers will be sure to keep your vehicle in pristine condition for years to come.



### FEATURES:

- Lightweight and water-resistant
- Breathable fabrics and ventilation flaps allow moisture to escape, minimising the development of rot and mildew
- UV 50+ rated roof provides protection against the harsh Australian sun
- Heavy-duty skirt with nylon clips, and reinforced tabs with nylon straps
- Double stitched reinforced elastic corners
- Easily adjusted to fit securely and provide maximum protection against all weather conditions
- Zipped roll up sides for easy access
- Storage bag included



SIZE (ft)	PART NUMBER
14-16'	07000140016010
16-18'	07000160018010
18-20'	07000180020010
20-22'	07000200022010
22-24'	07000220024010

## GET IN TOUCH WITH OUR FRIENDLY TEAM

1300 663 868 | [enquiries@aussietraveller.com.au](mailto:enquiries@aussietraveller.com.au) | [aussietraveller.com.au](http://aussietraveller.com.au)

BRISBANE SHOWROOM: 11-15 Oasis Court, Clontarf QLD 4019 | MELBOURNE SHOWROOM: 235 Barry Road, Campbellfield VIC 3061



## POP-TOP CARAVAN COVERS



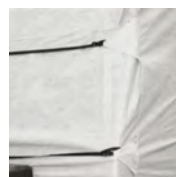
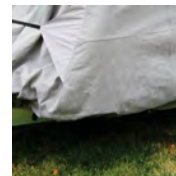
**The Aussie Traveller Premium Pop-Top Caravan Covers deliver the best quality protection and functionality.**

Our range of Premium Pop-Top Caravan Covers have been designed and manufactured to protect your vehicle from the harsh Australian elements. Available in a selection of sizes, all models feature a waterproof breathable side panel, reinforced skirt and easy-to-fit design. Our range of lightweight, premium covers will be sure to keep your vehicle in pristine condition for years to come.



### FEATURES:

- Lightweight and water-resistant
- Breathable fabrics and ventilation flaps allow moisture to escape, minimising the development of rot and mildew
- UV 50+ rated roof provides protection against the harsh Australian sun
- Heavy-duty skirt with nylon clips, and reinforced tabs with nylon straps
- Double stitched reinforced elastic corners
- Easily adjusted to fit securely and provide maximum protection against all weather conditions
- Zipped roll up sides for easy access
- Storage bag included



SIZE (ft)	PART NUMBER
12-14'	07000001214010
14-16'	07000001416010
16-18'	07000001618010
18-20'	07000001820010

### GET IN TOUCH WITH OUR FRIENDLY TEAM

1300 663 868 | [enquiries@aussietraveller.com.au](mailto:enquiries@aussietraveller.com.au) | [aussietraveller.com.au](http://aussietraveller.com.au)

BRISBANE SHOWROOM: 11-15 Oasis Court, Clontarf QLD 4019 | MELBOURNE SHOWROOM: 235 Barry Road, Campbellfield VIC 3061

**XTEND  
OUTDOORS**

## GAS BOTTLE COVERS

### Protect your gas bottle from the elements when travelling and in use.

The Xtend Outdoors Gas Bottle Cover is made from heavy-duty vinyl and provides great protection for your 9kg gas bottle when you're on the road. It protects the entire bottle and its fittings from water, mud and dirt to ensure your gas bottle remains in perfect working order.

The Xtend Outdoors Gas Bottle cover comes in black and light grey options with a Velcro flap allows hose to pass through, so you can leave the cover on when in use.

### FEATURES

- Ultimate protection from the elements
- Waterproof heavy-duty vinyl.
- Velcro flap for hose
- Fits 9kg gas bottle

#### **GAS BOTTLE COVER - GREY**

PART NUMBER: X018717

#### **GAS BOTTLE COVER - BLACK**

PART NUMBER: X021213



*For full specifications and pricing see our website. For trade & wholesale pricing please speak to one of our sales reps.*

## GET IN TOUCH WITH OUR FRIENDLY TEAM

1300 663 868 | [enquiries@aussietraveller.com.au](mailto:enquiries@aussietraveller.com.au) | [aussietraveller.com.au](http://aussietraveller.com.au)

BRISBANE SHOWROOM: 11-15 Oasis Court, Clontarf QLD 4019 | MELBOURNE SHOWROOM: 235 Barry Road, Campbellfield VIC 3061





## XT MATS

### Ditch the dirt with our premium synthetic grass XT Mats - easy to clean, durable mats.

Soft underfoot, the XT Mat is made of premium synthetic grass and designed for all areas of your van, making it the perfect option of your next adventure or quick trip away.

The XT Mat is low maintenance. The UV and weather resistant material prevents the grass from fading or the mat losing elasticity.

With the non-slip, multi-layer backing and added drainage holes, they are easy to clean and durable. When not in use you can also use the sewn-in buckle straps to easily roll up and store your XT Mat.

### FEATURES

- UV & weather resistance
- Premium synthetic grass
- Fire retardant
- Low maintenance
- Comfortable and soft underfoot
- Long life - will last for years
- 40mm pile height
- Strong & durable 3 layer backing
- Drainage holes for easy clean up



**XT MAT 26x58cm**  
PART NUMBER: X011213



**XT MAT 50x65cm**  
PART NUMBER: X011212



**XT MAT 60x90cm**  
PART NUMBER: X011215



**XT MAT 60x120cm**  
PART NUMBER: X011214



*For full specifications and pricing see our website. For trade & wholesale pricing please speak to one of our sales reps.*

## GET IN TOUCH WITH OUR FRIENDLY TEAM

1300 663 868 | [enquiries@aussietraveller.com.au](mailto:enquiries@aussietraveller.com.au) | [aussietraveller.com.au](http://aussietraveller.com.au)

BRISBANE SHOWROOM: 11-15 Oasis Court, Clontarf QLD 4019 | MELBOURNE SHOWROOM: 235 Barry Road, Campbellfield VIC 3061



## FLOORING OPTIONS

**Aussie Traveller has the floor solution for your annexe or outdoor space to stop dirt and sand tracking through your vehicle.**

### ANNEXE FLOORING



Create a comfortable outdoor living space with our non-slip, rubber Annexe Matting. This waterproof flooring provides a grass friendly solution to keeping any space dirt free. Available in a range of lengths from 3m to 6m, all 2.5m in width.

- Grass friendly and hard wearing
- UV stabilised and rot proof
- Easy to clean and waterproof
- 2.5m width
- Easily cuts to size
- Dark green rubber material
- Includes storage bag

SIZE (HxW)	PART NUMBER
3.0 x 2.5m	38503000250600
4.0 x 2.5m	38504000250600
5.0 x 2.5m	38505000250600
6.0 x 2.5m	38506000250600

### FLOOR MATTING



Keep the dirt and sand out of your tent or caravan with our Aussie Traveller Annexe Matting. This non-slip, lightweight and breathable matting will ensure your campsite is safe and easy to walk over without damaging the ground beneath.

- Available in grey and in a range of sizes
- Hemmed reinforced edges for extra strength
- Pegging eyelets around matting
- Breathable fabric protects grass
- UV stabilised
- Strong, durable & rot proof
- Storage bag included

SIZE (HxW)	PART NUMBER
3.0 x 2.5m	38630002500010
4.0 x 2.5m	38645002500010
5.0 x 2.5m	38650002500010
6.0 x 2.5m	38660002500010

*For full specifications and pricing see our website. For trade & wholesale pricing please speak to one of our sales reps.*

## GET IN TOUCH WITH OUR FRIENDLY TEAM

1300 663 868 | [enquiries@aussietraveller.com.au](mailto:enquiries@aussietraveller.com.au) | [aussietraveller.com.au](http://aussietraveller.com.au)

BRISBANE SHOWROOM: 11-15 Oasis Court, Clontarf QLD 4019 | MELBOURNE SHOWROOM: 235 Barry Road, Campbellfield VIC 3061

# AUSSIE TRAVELLER



## SCREW IN PEGS

### You'll never have to worry about ground density with the Aussie Traveller Screw In Pegs, built strong for hard-packed ground.

The Aussie Traveller galvanised Screw In Peg is ideal for when the ground is too hard for your standard tent pegs. With a 13mm hex head located at the top of the peg, they are extremely easy to use.

The set comes with 15 Pegs along with a 13mm hex head socket that allows your drill to do all the hard work for you. Don't have a drill? No worries, grab a shifter or a 13mm spanner and you're away.

The pegs measure 220mm in length and are perfect to be used with your gazebo, tents or even to hold your guy ropes on your 4WD awning, making the Aussie Traveller screw in peg very versatile.

### FEATURES

- Ideal for use in hard ground
- Electro galvanised finish pegs
- Set of 15 pegs
- Black and Lumo options available
- Lumo colour-way glows in the dark for visibility at night
- Includes 13mm hex head socket
- Conveniently store in the included carry case.



#### 15 PIECE SET BLACK SCREW IN PEGS

PART NUMBER: 266607001

#### 15 PIECE SET LUMO SCREW IN PEGS

PART NUMBER: 266607002

*For full specifications and pricing see our website. For trade & wholesale pricing please speak to one of our sales reps.*

## GET IN TOUCH WITH OUR FRIENDLY TEAM

1300 663 868 | [enquiries@aussietraveller.com.au](mailto:enquiries@aussietraveller.com.au) | [aussietraveller.com.au](http://aussietraveller.com.au)

BRISBANE SHOWROOM: 11-15 Oasis Court, Clontarf QLD 4019 | MELBOURNE SHOWROOM: 235 Barry Road, Campbellfield VIC 3061



**XTEND  
OUTDOORS**

## PEGS, POLES & ROPES

**Xtend Outdoors has a large range of pegs, poles, ropes and kits to keep your awning, annexe and campsite secure.**

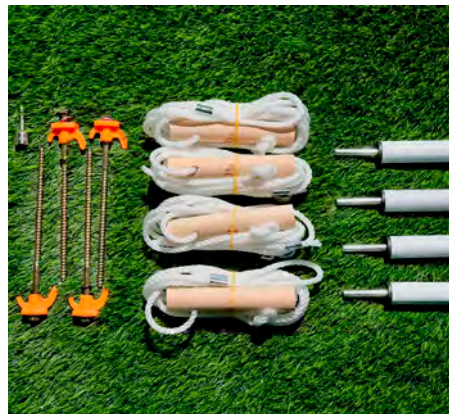
Forest camps are fast becoming a popular sport among youngsters and children who get a chance to explore the world outside their regular activities. The main aim of the camps is to make them independent and be responsible for themselves. However, safety should be maintained whenever one goes on such camps and this is the responsibility of the course instructor or the camp leader. No camp is complete without staying in the tent and making a sturdy tent is an art in itself.



### XTEND TROPICAL ROOF POLE KIT UP TO 16FT

PART NUMBER: X020590

- Everything you need to set up the Tropical Roof Cover
- The amount of poles, ropes & pegs varies according to the size of Tropical Roof Cover
- Includes Poles, Ropes, Screw-in Pegs, Screw-in Pegs and Drill Bit



### XTEND TROPICAL ROOF POLE KIT 17FT & OVER

PART NUMBER: X020591

- Everything you need to set up the Tropical Roof Cover
- The amount of poles, ropes & pegs varies according to the size of Tropical Roof Cover
- Includes Poles, Ropes, Screw-in Pegs, Screw-in Pegs and Drill Bit



### TIE DOWN ROPE & PEG KIT

PART NUMBER: X018661

- 1x Sturdy nylon rope with wooden runner handle
- 1x Steel peg

*For full specifications and pricing see our website. For trade & wholesale pricing please speak to one of our sales reps.*

## GET IN TOUCH WITH OUR FRIENDLY TEAM

1300 663 868 | [enquiries@aussietraveller.com.au](mailto:enquiries@aussietraveller.com.au) | [aussietraveller.com.au](http://aussietraveller.com.au)

BRISBANE SHOWROOM: 11-15 Oasis Court, Clontarf QLD 4019 | MELBOURNE SHOWROOM: 235 Barry Road, Campbellfield VIC 3061





## POP-TOP SUPPORT POLE

PART NUMBER: X018606

- Heavy duty, aluminium pop-top support poles
- Add extra support
- Prevent your camper roof from bowing or buckling



## 5FT SPREADER BARS

PART NUMBER: X020748

- Lightweight
- Powder-coated aluminium
- Adjustable lock and C clip to bird beak ends



## 12FT SPREADER BARS

PART NUMBER: X020741

- Lightweight
- Powder-coated aluminium
- Adjustable lock and eyelet ends



## EYELET SPREADER BARS

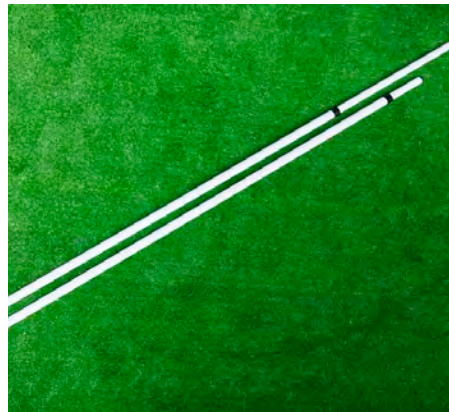
PART NUMBER: X018657

- Replacement spreader bars for annexes and extensions
- Lightweight
- Powder-coated aluminium
- Includes eyelet ends



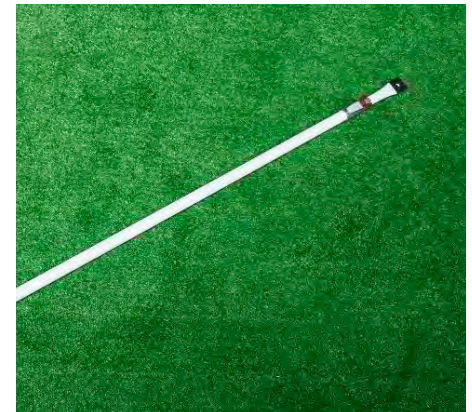
## 4FT WHITE TWISTLOCK POLES

- Lightweight
- Powder-coated finish
- Multiple end types available



## 9FT TWISTLOCK POLES

- Lightweight
- Strong & Sturdy aluminium
- Powder-coated finish
- Multiple end types available



## 9FT SPREADER BARS

- Lightweight
- Powder-coated finish
- Adjustable lock
- Multiple end types available

END TYPE	PART NUMBER
Cap to C clip	X020746
Cap to Threaded Spigot	X020745

END TYPE	PART NUMBER
Spigot to Cap	X018487
Cap to C clip	X020736
Cap to Cap	X018486
Cap to Threaded Spigot	X020737

END TYPE	PART NUMBER
C clip to Birds beak	X020744
C clip to C clip	X020743
Eye to Hook	X020738
Eye to Spigot	X020739

## GET IN TOUCH WITH OUR FRIENDLY TEAM

1300 663 868 | [enquiries@aussietraveller.com.au](mailto:enquiries@aussietraveller.com.au) | [aussietraveller.com.au](http://aussietraveller.com.au)

BRISBANE SHOWROOM: 11-15 Oasis Court, Clontarf QLD 4019 | MELBOURNE SHOWROOM: 235 Barry Road, Campbellfield VIC 3061



## EZY ANCHOR

SAFE, SECURE & STRONG



The Ezy Anchor range of Screw In Tent Pegs make camping and caravanning easy with their quick drill method to set up and pack down.

The range of Ezy Anchor products have been designed by months of testing and research throughout Central and Outback Australia, in various terrains.

The Ezy Anchors are made from durable recyclable plastic with the screw pegs being positioned at an approximate 30 degree angle. This provides greater resistance in the ground when under load, whilst the signature Ezy Anchor hook shape stops guy lines being released in any weather conditions.

The Ezy Anchor Screw In Tent Pegs make set up and pack down time extremely quick with the use of a cordless drill or impact driver, allowing for more recreational time.

### FEATURES

- Made from durable recyclable plastic
- Suitable for hard terrain, dirt and sandy loam soils
- Withstands majority of environments and weather conditions
- Provides greater resistance in the ground when under load
- Signature Ezy Anchor hook shape stops guy lines being released
- Colour allows visibility both in daylight and at night
- Rounded surfaces and countersunk screw peg washer heads for added safety
- Extremely quick set up and pack down time with the use of a cordless drill or impact driver
- Perfect in providing the maximum in ground tent peg holding capacity.



### CARAVAN STARTER PACK

- 8 x Ezy Anchors
- 4 x Coastal pegs at 280mm long
- 4 x Outback pegs at 200mm long
- 1 x Torx T50 Driver
- 1 x Torx T50 Manual removal L key
- 2 x Caravan Double Guy Ropes with Velcro straps, stainless clips, trace springs, cleats and reflective double braided polyester rope
- 1 x Ezy Anchor Canvas tent peg bag

**PART NUMBER:** 266607006

## GET IN TOUCH WITH OUR FRIENDLY TEAM

1300 663 868 | [enquiries@aussietraveller.com.au](mailto:enquiries@aussietraveller.com.au) | [aussietraveller.com.au](http://aussietraveller.com.au)

BRISBANE SHOWROOM: 11-15 Oasis Court, Clontarf QLD 4019 | MELBOURNE SHOWROOM: 235 Barry Road, Campbellfield VIC 3061

# AUSSIE TRAVELLER



## STARTER PACK PLUS

8 x Ezy Anchors  
4 x 200mm Long Outback Screws  
4 x 280mm Long Coastal Screws  
1 x Torx T50 Driver  
1 x Calico Storage Bag

**PART NUMBER:** 266607003



## COASTAL PACK

6 x Ezy Anchors  
6 x 280mm Long Screws  
1 x Torx T50 Driver  
1 x Calico Storage Bag

**PART NUMBER:** 266607004



## OUTBACK PACK

6 x Ezy Anchors  
6 x 200mm Long Screws  
1 x Torx T50 Driver  
1 x Calico Storage Bag

**PART NUMBER:** 266607005



## 4WD PACK

4 x Ezy Anchors  
2 x Coastal pegs at 280mm long  
2 x Outback pegs at 200mm long  
1 x Torx T50 driver bit

**PART NUMBER:** 266607007



## COASTAL PEG

1 x Ezy Anchors  
1 x 280mm Long Screws

**PART NUMBER:** 266607011



## OUTBACK PEG

1 x Ezy Anchors  
1 x 200mm Long Screws

**PART NUMBER:** 266607012



## ROPE GRIPPER

**PART NUMBER:** 266607008



## TORX T50 DRIVER

**PART NUMBER:** 266607010



## TORX T50 MANUAL REMOVAL L KEY

**PART NUMBER:** 266607009

## GET IN TOUCH WITH OUR FRIENDLY TEAM

1300 663 868 | [enquiries@aussietraveller.com.au](mailto:enquiries@aussietraveller.com.au) | [aussietraveller.com.au](http://aussietraveller.com.au)

BRISBANE SHOWROOM: 11-15 Oasis Court, Clontarf QLD 4019 | MELBOURNE SHOWROOM: 235 Barry Road, Campbellfield VIC 3061



**XTEND  
OUTDOORS**

## MINI OUTDOOR HD LED PROJECTOR

The Mini Outdoor HD LED Projector is perfect for movie nights with the family while camping. Easy to use, simply connect to your laptop or phone via USB/HDMI and stream your favourite movies & shows.

The projector has built in speakers as well as a built-in lithium battery with a wireless run time of 90 mins, a projection distance of 90cm to 250cm (40-60" wide) including manual image focusing to ensure you get a crisp image. Also included is a white projector screen with 6 eyelets to easily hang the screen in a convenient location.

### FEATURES

- Provides entertainment for the whole family
- Projects media up to 40-60" wide
- Play media via microSD, AV, USB & HDMI ports
- Sound from the built-in speaker or the 3.5mm audio jack

PART NUMBER: 265612001

### SPECIFICATIONS

- HD Resolution: Up to 1920 x 1080px
- Light: LED
- Focus Mode: Manual toggle
- Projection Distance: 90cm to 250cm (40-60" wide)
- Projection Ratio: 1.5:1
- Aspect Ratio: 16:9 and 4:3
- Colour: 16770K
- Power: Built in lithium battery (1600mAh)
- Charge time: 180min
- Runtime: 90min
- Inputs: HDMI, USB 2.0, microSD, AV
- Outputs: Built-in speaker or 3.5mm Audio Jack
- Screen: Soft fabric 1.3m x 0.7m

### INCLUSIONS

- Portable HD LED Projector
- Projector Screen
- Remote (*AAA batteries not included*)
- DC 12V car charger
- AC 240V charger
- AV cables
- User manual



For full specifications and pricing see our website. For trade & wholesale pricing please speak to one of our sales reps.

## GET IN TOUCH WITH OUR FRIENDLY TEAM

1300 663 868 | [enquiries@aussietraveller.com.au](mailto:enquiries@aussietraveller.com.au) | [aussietraveller.com.au](http://aussietraveller.com.au)

BRISBANE SHOWROOM: 11-15 Oasis Court, Clontarf QLD 4019 | MELBOURNE SHOWROOM: 235 Barry Road, Campbellfield VIC 3061

**XTEND**  
OUTDOORS

## SMART PROJECTOR & SCREEN



### The Xtend Outdoors Outdoor Smart Projector is sure to be a winner with friends, family and even your campsite neighbours!

The Xtend Outdoors Smart Projector is a durable yet sophisticated projector, packed full of features and adding a bit of luxury to your camping trips away.

Offering Wi-Fi and Bluetooth connections as well as having Netflix and Youtube pre-loaded, you can enjoy watching any of your TV favourites from the comfort of your own camp. The built-in speaker also means no extra accessories are needed.

The Smart Projector can connect to multiple devices such as Android and iPhone, and also offers screen mirroring through Airplay and Miracast.

To top it off, there is a built-in track-pad for ease of controls along with a remote. But let's face it, what's the chances the remote may go walk-a-bouts amongst the camping baggage anyhow...

With up to 2 hours of run time with built-in rechargeable battery, you'll be able to kick back and relax with the family where ever you are.

#### PROJECTOR SCREEN

The Projector Screen is made out of high-quality polyester and is 100" in size, providing a large screen display.

You can hang the screen to the wall of your home, caravan or camper using the double-sided adhesive tape and hooks provided, or, for a less permanent solution, hang the screen on just about any surface you find suitable using aftermarket awning hooks which are available for purchase separately.

The screen is ultra-light making it portable to take with you on any trip, and packs away into a small bag, making it extremely portable and easy to store.

*\*Subscriptions not included.*

#### FEATURES

- Pre-loaded with Netflix & YouTube\*
- Wi-Fi & Bluetooth connections
- Connects to multiple devices
- Android & iOS compatibility
- USB slots & HDMI ports
- Built-in Speaker
- Built-in rechargeable battery
- Projects up to 100"
- Large 100" Screen Size
- High-quality polyester screen
- Ultra-lightweight screen



*For full specifications and pricing see our website. For trade & wholesale pricing please speak to one of our sales reps.*

### GET IN TOUCH WITH OUR FRIENDLY TEAM

1300 663 868 | [enquiries@aussietraveller.com.au](mailto:enquiries@aussietraveller.com.au) | [aussietraveller.com.au](http://aussietraveller.com.au)

BRISBANE SHOWROOM: 11-15 Oasis Court, Clontarf QLD 4019 | MELBOURNE SHOWROOM: 235 Barry Road, Campbellfield VIC 3061



## SPECIFICATIONS



### OUTDOOR SMART PROJECTOR

PART NUMBER: : X020397

DIMENSIONS (LxWxH)	WEIGHT	INCLUSIONS
7.2 x 7.2 x 10.6cm	420g	<ul style="list-style-type: none"> <li>Outdoor Smart Projector</li> <li>Remote</li> <li>USB Charging Cable</li> </ul>

#### PLEASE NOTE:

- Protect the projector from dust, moisture, corrosion and vibration.
- Do not put anything except the projector on the projector station.
- Do not move the projector while in use. Wait until the projector is cold to move the machine.
- Do not touch the projector optical components.
- Do not open the projector cover as the projector has power inside.
- Do not cover the wind in & outlet port when you use the projector.



### PROJECTOR SCREEN

PART NUMBER: X020398

DIMENSIONS (WxH)	WEIGHT	INCLUSIONS
186 x 105cm	280g	<ul style="list-style-type: none"> <li>Projector Screen</li> <li>Double sided adhesive tape &amp; hooks</li> </ul>

## GET IN TOUCH WITH OUR FRIENDLY TEAM

1300 663 868 | [enquiries@aussietraveller.com.au](mailto:enquiries@aussietraveller.com.au) | [aussietraveller.com.au](http://aussietraveller.com.au)

BRISBANE SHOWROOM: 11-15 Oasis Court, Clontarf QLD 4019 | MELBOURNE SHOWROOM: 235 Barry Road, Campbellfield VIC 3061

**XTEND  
OUTDOORS**

## INFLATABLE FURNITURE



### The popular Xtend Inflatable Furniture range is durable, lightweight and comfortable.

Featuring removable covers for easy washing and LED light strips around the outer arm edges (excluding sofa bed), the Inflatable Furniture range is perfect for relaxing at your campsite.

Setting up and packing down is a breeze with the two way valves on the back of the chair.

The sofa, arm chair and foot stool also feature a side pocket on the arm, perfect for holding your phone, the TV remote or a cold drink on a hot summers day.

The Inflatable Sofa Bed is the perfect solution for the kids needing a quick nap while outdoors. Simply un-clip the side straps to turn this comfy sofa into a spacious bed.

### FEATURES

- Water resistant, removable covers for easy cleaning
- Two-way valve for easy inflation & deflation
- Can be inflated by hand pump or electric pump
- LED light strips (excludes sofa bed)
- 200kg rating - sofa & sofa bed
- Storage bags included

### PLEASE NOTE:

- *Pump not included*



For full specifications and pricing see our website. For trade & wholesale pricing please speak to one of our sales reps.

## GET IN TOUCH WITH OUR FRIENDLY TEAM

1300 663 868 | [enquiries@aussietraveller.com.au](mailto:enquiries@aussietraveller.com.au) | [aussietraveller.com.au](http://aussietraveller.com.au)

BRISBANE SHOWROOM: 11-15 Oasis Court, Clontarf QLD 4019 | MELBOURNE SHOWROOM: 235 Barry Road, Campbellfield VIC 3061



## SPECIFICATIONS



### INFLATABLE ARM CHAIR

PART NUMBER: X011288

DIMENSIONS INFLATED: 960 x 800 x 700mm

DIMENSIONS DEFLATED: 360 x 290 x 120mm



### INFLATABLE FOOTSTOOL

PART NUMBER: X011289

DIMENSIONS INFLATED: 580 x 340 x 450mm

DIMENSIONS DEFLATED: 320 x 290 x 50mm



### INFLATABLE SOFA BED

PART NUMBER: X011291

DIMENSIONS INFLATED: 1420 x 820 x 1550mm

DIMENSIONS UNFOLDED: 2130 x 330 x 1550mm

DIMENSIONS DEFLATED: 430 x 340 x 100mm



### INFLATABLE SOFA

PART NUMBER: X011290

DIMENSIONS INFLATED: 1500 x 780 x 740mm

DIMENSIONS DEFLATED: 400 x 340 x 100mm

## GET IN TOUCH WITH OUR FRIENDLY TEAM

1300 663 868 | [enquiries@aussietraveller.com.au](mailto:enquiries@aussietraveller.com.au) | [aussietraveller.com.au](http://aussietraveller.com.au)

BRISBANE SHOWROOM: 11-15 Oasis Court, Clontarf QLD 4019 | MELBOURNE SHOWROOM: 235 Barry Road, Campbellfield VIC 3061

**QUELL**

## QUELL FIRE SAFETY

**Aussie Traveller offers you the latest in fire safety and personal safety equipment with the Quell Fire Safety range.**

From fire extinguishers to personal safety equipment, we have all your safety needs covered. All Australian compliance approved from Quell, one of the country's leading fire safety equipment suppliers. Quell's commitment to quality and product innovation is unparalleled making them one of the most respected names in Fire & Safety in the Australian consumer market.



### FIRE BLANKET 1m×1m

PART NUMBER: 05100030010000

- Comes in storage pouch
- Easily mounted
- Fire types—stove top & clothing
- Complies with Australian Standards



### FIRE EXTINGUISHER 1KG

PART NUMBER: 05100030001000

- Auto/Marine
- Easy to read pressure gauge
- 5-year warranty
- Australian Standard certified to AS1841.5



### EXTINGUISHER HOUSING UNIT

BLACK PART NUMBER: 05100030009000  
WHITE PART NUMBER: 05100030008000

- Available in White or Black
- 3mm ABS plastic
- Recessed box to hold in place
- Cavity (W×H×D)—135 × 345 × 95mm

*For full specifications and pricing see our website. For trade & wholesale pricing please speak to one of our sales reps.*

## GET IN TOUCH WITH OUR FRIENDLY TEAM

1300 663 868 | [enquiries@aussietraveller.com.au](mailto:enquiries@aussietraveller.com.au) | [aussietraveller.com.au](http://aussietraveller.com.au)

BRISBANE SHOWROOM: 11-15 Oasis Court, Clontarf QLD 4019 | MELBOURNE SHOWROOM: 235 Barry Road, Campbellfield VIC 3061





## PHOTOELECTRIC SMOKE ALARM

PART NUMBER: 05100030005000

- For Caravans & Motorhomes
- Non removable lithium battery
- Photoelectric sensor
- Bug Screen



## CARBON MONOXIDE DIGITAL ALARM

PART NUMBER: 05100030011000

- Detects the early presence of carbon monoxide
- 10-year warranty on alarm unit
- Easy to fit, no wiring required
- Can be installed anywhere



## LONG-LIFE SMOKE ALARM

PART NUMBER: 05100030006000

- 10 Year Warranty
- Continuous fire protection even during power outage
- Photoelectric sensor
- Complies with Australian Standards



## QUELL FIRE STOP AEROSOL FIRE SUPPRESSANT

PART NUMBER: 05100030000000

- Suitable for Class A, B, E and F fire categories
- Single use disposable can
- Environmentally-safe suppression agent
- No messy residue after discharge



## PERSONAL PANIC ALARM

PART NUMBER: 05100030004000

- Ideal for joggers, night shift workers & people who live alone
- Includes LED warning light
- Loud 125dB alarm
- Small, compact & easy to use
- 1 year warranty



## MULTI-TOOL FLASHLIGHT

PART NUMBER: 05100030002000

- Equipped with emergency tools - knife, 3 screw drivers, can opener, bottle opener, scissors, 6mm & 7mm hex wrench, glass breaker, seat belt cutter, telescopic lens, signal flasher, emergency panic alarm, adjustable torch
- 3 LED modes—high/low/flashing
- 1 year warranty



## 6 IN 1 CARBON MONOXIDE SENSOR

PART NUMBER: 05100030003000

- 6 in 1 rescue tool
- Automatic Carbon Monoxide (CO) Detector alarm, emergency hammer, seat belt cutter, red/white warning light, LED flashlight & magnets for easy attachment
- Carbon Monoxide sensor can operate up to 6 months
- Rechargeable

**GET IN TOUCH WITH OUR FRIENDLY TEAM**

1300 663 868 | [enquiries@aussietraveller.com.au](mailto:enquiries@aussietraveller.com.au) | [aussietraveller.com.au](http://aussietraveller.com.au)

BRISBANE SHOWROOM: 11-15 Oasis Court, Clontarf QLD 4019 | MELBOURNE SHOWROOM: 235 Barry Road, Campbellfield VIC 3061

## CANVAS TV STORAGE BAG



### Keep your TV safe & protected while travelling with our new TV Storage Bag.

The Aussie Traveller Caravan TV bag has been designed to eliminate the need to wrap your TV up in a blanket while traveling.

The bag is made out of 402gsm Ripstop Canvas lined with a soft EPE Foam flannelette lining. The bag comes with carry handles that velcro together to ensure your TV stays safe and secure.

You won't have to worry about your TV getting scratched, or worse, broken, while travelling to your next destination with our TV Storage Bag.

### FEATURES

- 402gsm Ripstop Canvas
- EPE Foam flannelette lining
- Fits 22" - 24" TVs
- Carry Handles
- Easy to Store away when not in use

**PART NUMBER:** 266201025



*For full specifications and pricing see our website. For trade & wholesale pricing please speak to one of our sales reps.*

### GET IN TOUCH WITH OUR FRIENDLY TEAM

1300 663 868 | [enquiries@aussietraveller.com.au](mailto:enquiries@aussietraveller.com.au) | [aussietraveller.com.au](http://aussietraveller.com.au)

BRISBANE SHOWROOM: 11-15 Oasis Court, Clontarf QLD 4019 | MELBOURNE SHOWROOM: 235 Barry Road, Campbellfield VIC 3061