



Installation for New Post Frame Pole Barn Walls

Open Interior (R-Value 5.3 or 4.7)

Metal Interior (R-Value 6.3 or 5.5)

Please read and follow all of the steps below to ensure proper installation.

Products Suggested:

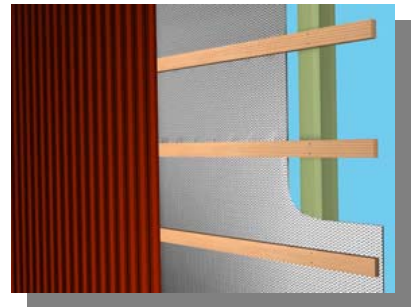
- Reflex-Air™ Double Reflective or White / Reflective Bubble insulation

Materials Needed:

- Tape Measure
- Utility knife
- Scissors
- Tek screws
- Foil or White tape

Installation for Inside of Girts (R-Value 5.3):

1. Staple Reflex-Air™ bubble insulation to the outside of the top girt.
2. Staple the product to the inside of the remaining girts.
3. Butt seams and tape. Gaps in seams will cause air infiltration, which may cause condensation.
4. For interior covering, attach 1" X 2" furring strips perpendicular to the girts through the bubble insulation.
5. Attach interior panel to the furring strips. This will provide a 1" nominal air space between the interior panel and the bubble insulation and a 1 ½" nominal air space between the bubble insulation and the exterior panel. This achieves an **R-Value 6.3** if a metal interior surface is used.



Installation for Outside of Girts (R-Value 4.7):

1. Staple Reflex-Air™ bubble insulation to the outside of the top girt.
2. Staple the product to the outside of the remaining girts. Make sure there is at least a ¾" sag at the center of each cavity.
3. Butt seams and tape. Gaps in seams will cause air infiltration, which may cause condensation.
4. Attach outside panel.
5. Attach interior panel to the inside of the girts (if specified). This achieves an **R-Value 5.5** if a metal interior surface is used.

