



Hella marine



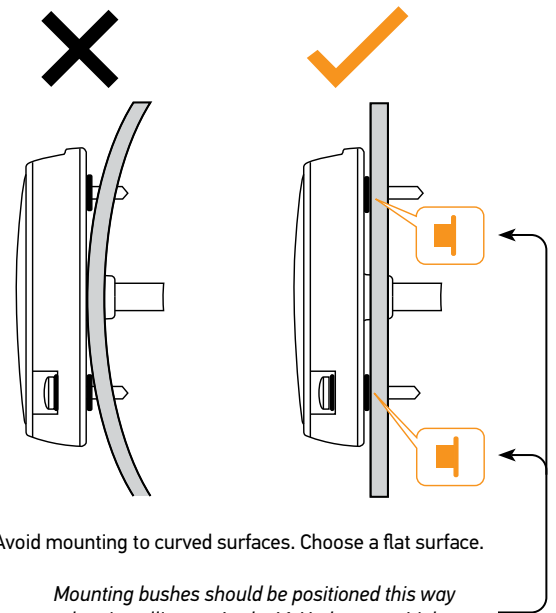
APELO
Underwater Lighting Brilliance

Apelo Underwater Lights Mounting Advisory

Hella marine are tremendously proud of the performance and quality of our products, and Apelo Underwater Lights are no exception. Our 5 year warranty reflects that Apelo Underwater Lights are built to last, even in the harshest marine environments.

Apelo Underwater Lights are designed to be mounted on your transom, meaning they require a flat surface where the adhesive can evenly bond the base of the light to your vessel. This adhesive is the primary bonding material for affixing and holding the light in place, with the provided screws primarily used to secure it while the adhesive dries.

Ensure you are mounting your Apelo Underwater Light to a uniformly flat section of your transom, and use caution while securing the light in place with the included screws, as mounting to curved or irregular surfaces, or overtightening may damage your new Apelo light (refer to instructions for torque settings). We have also provided handy 'feet' or bushes to allow even distribution of adhesive over the entire base of the light while mounting.






Avoid mounting to curved surfaces. Choose a flat surface.

Mounting bushes should be positioned this way when installing an Apelo A1 Underwater Light.

Choosing the right Apelo light

Apelo Underwater Lights are designed with your needs in mind. Whether your vessel is in and out of the water with the weather, or you live on your boat while it's moored in the marina, use our handy guide below to help you choose your next underwater light:

Model / Housing Material	Salt & Fresh Water - Temporary submersion*	Salt Water - Permanent submersion	Fresh Water - Permanent submersion
 Apelo A1 Polymer	Yes – All hull materials	Yes – All hull materials	Yes – All hull materials
 Apelo A2 Aluminium	Yes – All hull materials	<i>Not for permanent Submersion</i>	Yes – All hull materials
 Apelo A2 Bronze	Yes – All hull materials (excluding Aluminium)	Yes – All hull materials (excluding Aluminium)	Yes – All hull materials (excluding Aluminium)

*Temporary submersion refers to hulls that are immersed for hours or days at a time, rather than weeks or months. These vessels are commonly stored on trailers or in a dry stack and are typically washed down between use.

For superior performance and extreme corrosion resistance Hella marine recommends using the Apelo A2 Bronze Underwater Light wherever possible.