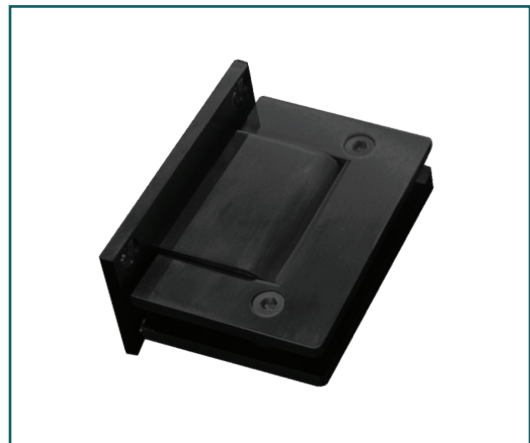




IDEAL HYDRAULIC DOOR HARDWARE





DOOR RAIL SYSTEM

★ ★ ★ ★ ★ **BEST PRODUCT EVER!**
Ken P. from theglazingengineer.com

REVOLUTIONARY Hydraulic "SMPL-Door Rail" System

Launching Our 4" Hydraulic Door Rail System, simple in design and functionality. The revolutionary "SMPL-Door Rail" comes with an inbuilt hydraulic system at the bottom rail for a controlled closing speed and hold open function at 90°.

SMPL Top Door Rail System **NEW**



- BSS
- PSS
- SA
- BL

➔ **IDR100TOP**
Top Door Rail 35-3/4"

SMPL Bottom Door Rail System **NEW**



- BSS
- PSS
- SA
- BL

➔ **IDR100**
Bottom Hydraulic Door Rail 35-3/4"

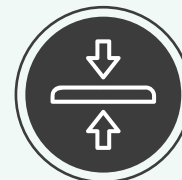
SMPL Bottom Door Rail with Lock **NEW**



➔ **IDR100LOCK**
Bottom Hydraulic Door Rail With Lock 35-3/4"



Features:



Glass Thickness: 10mm-12mm



500,000 Cycle Tested



3 Years Warranty



Wt. Capacity: 100kg



Hold Open 90°



Finishes: BL, SA, PSS & BSS

CONCEALED FLOOR SPRING FOR GLASS DOORS

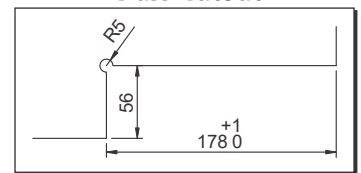
Product Specification

- Suitable door weight: Max 100kg.
- Suitable door width: 750~1000mm
- Suitable door thickness: 8~13mm
- Ambient temperature: 20°C~+50°C
- Quick and easy installation
- Compliant as per EN1154 European Standards
- Hold open 90° (Non Hold Open also available)
- Easy installation with base seat adjustable ±3mm backward and forward
- ±3mm left and right and 4° alignment adjustment



ICFH-100

Glass Cutout

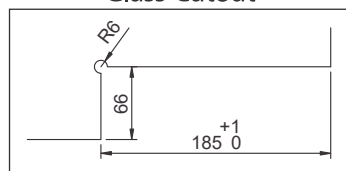


HEAVY
duty model



ICFH-105

Glass Cutout

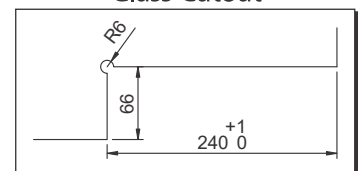


HEAVY
duty model



ICFH-135

Glass Cutout



DATA AND FEATURES

Item No.	OCFH-100	OCFH-105	OCFH-135
Max. door width	750~1000mm	1250mm	1250mm
Max. door weight	≤ 100 kg	≤ 100 kg	≤ 100 kg
Body dimension (mm)	Length	186	210.5
	Width	68	77
	Thick	36	42
Angle of opening	150°	150°	150°
Closing speed adjustable	✓	✓	✓
Breaking speed adjustable	✓	✓	✓
Non-handed	✓	✓	✓
Power adjustable			✓

✓ = yes x = no

BL-BLACK | BSS-BRUSHED STAINLESS STEEL | PSS-POLISHED STAINLESS STEEL

sales@iglasshardware.com | www.iglasshardware.com

• 90° Hold Open



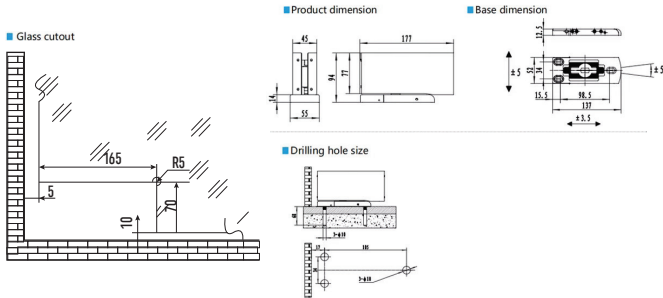
ICHH100

NEW

Specifications:

- Door weight: 100kgs
- Width: 1000mm 39-3/8"
- Glass Thickness: 10~15mm
- Temperature: -30°~60°
- Cycles Tested: 500,000
- Max. opening angle: 140° double action

- BSS
- PSS
- SA
- BL
- BG



HEAVY
duty model

• 90° Hold Open



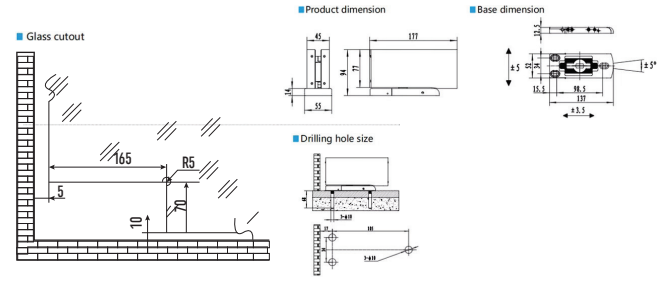
ICHH150

NEW

Specifications:

- Door weight: 150kgs
- Width: 200mm 47-1/4"
- Glass Thickness: 10~15mm
- Temperature: -30°~60°
- Cycles Tested: 500,000
- Max. opening angle: 140° double action

- BSS
- PSS
- SA
- BL
- BG



HYDRAULIC HINGE

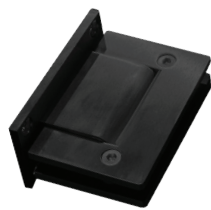
90° Hydraulic Glass Door Hinge Glass to Wall

• Hold Open / Non Hold Open

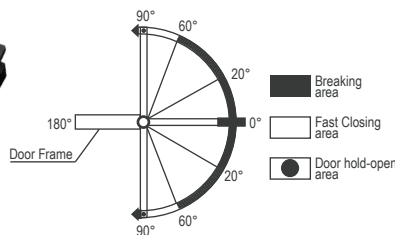


180° Hydraulic Glass Door Hinge Glass to Glass

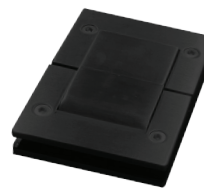
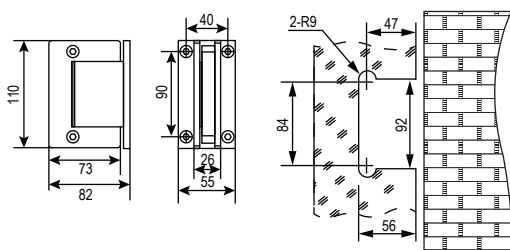
• Hold Open / Non Hold Open



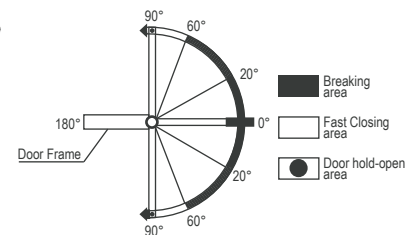
Functional Diagram



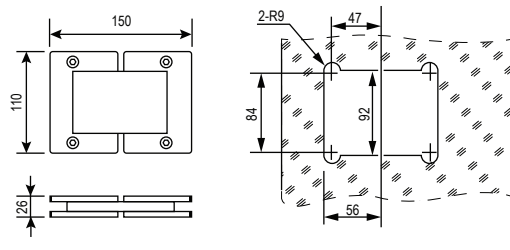
Product Dimension:



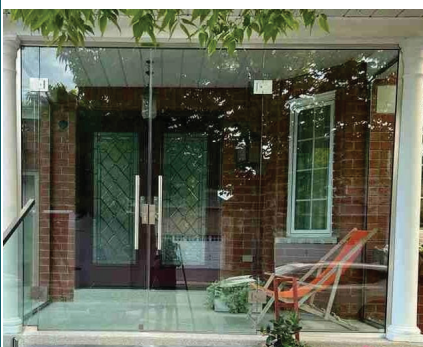
Functional Diagram



Product Dimension:



The hinge integrates the automatic soft close function into the glass door hinge, doesn't need any additional floor-mounted or top-mounted door closer device. Durable and super corrosion-resistant, suitable for both indoor and outdoor.



Features:



Glass Thickness
5/16" to 9/16"



Finishes
BL & BS



Material
SS316



Wt. Capacity
60kg

CONCEALED FLOOR SPRING FOR WOODEN DOORS

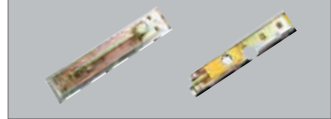
ICFH-135

Product Specification

- Suitable door weight: Max 100kg.
- Suitable door width: 750~1000mm
- Suitable door thickness: >40mm
- Angle of opening: 150°
- Quick and easy installation
- Compliant as per EN1154 European Standards
- Hold open 90° (Non Hold Open also available)
- Bottom plate is of SS 304 grade, SSS & PSS finish



Standard packing consists of top pivot set

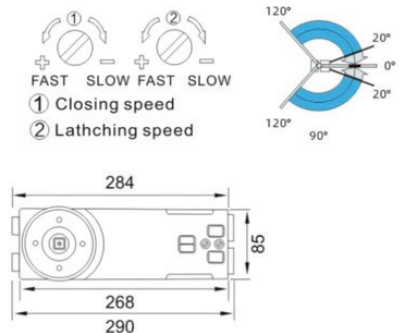


DATA & FEATURES

		Item No.
Max. door width	1000mm	ICFH100
Max. door weight	100kg.	
Suitable door thickness (mm)		≥ 40
Body dimention (mm)	Length	181
	Width	56
	Thick	32
Angle of opening		150°
Closing speed adjustable		✓
Breaking speed adjustable		✓
Hold open at 90°		✓
Non-handed		✓

✓ =yes x=no ○ =option

OVERHEAD DOOR CLOSER



IGODC9160

IGODC9160 Concealed Overhead Door Closer
 Medium Duty 90° Hold Open 3/4" with Mounting Clips

- Suitable door weight: Max 120kg.
- Suitable door width: 750~1000mm (29-1/2 inch -39-3/8 inch)
- Durability-500,000 Cycles Tested
- Ambient temperature: -20°C to +50°C
- Compliance With EN 1154
- Two latching speed for adjustment
- Comes with fitting to mount for glass door/ aluminum doors.
- Can be mounted inside the header or rectangle aluminum tube.
- Can be installed on aluminum and glass doors.

IDEAL PATCH DOOR KIT

IPHKIT-1

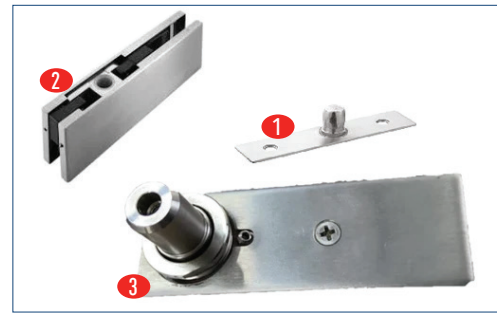
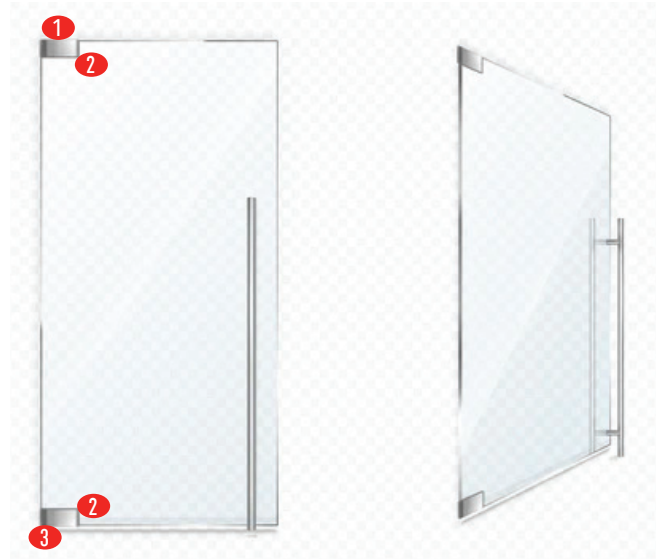
Ideal Patch Door Kit - Without Lock & Handle For 10mm-12mm Glass

Product Specification

- Doors Can Swing Either In and Out
- For 3/8" or 1/2" (10 or 12 mm) Glass
- Cover secured with small 'L' key.
- Kit Includes:-
- IPF2BSS-2 PCS
- IFSACCGPBS-1PC
- IFMADJ407BS
- 1PC

Finish: Stainless Steel, Polish Stainless, Matte Black & Satin Anodized

- *Custom Finish- Black, Brown and Others Available On Request



IDEAL PATCH DOOR KIT

IPHKIT-2

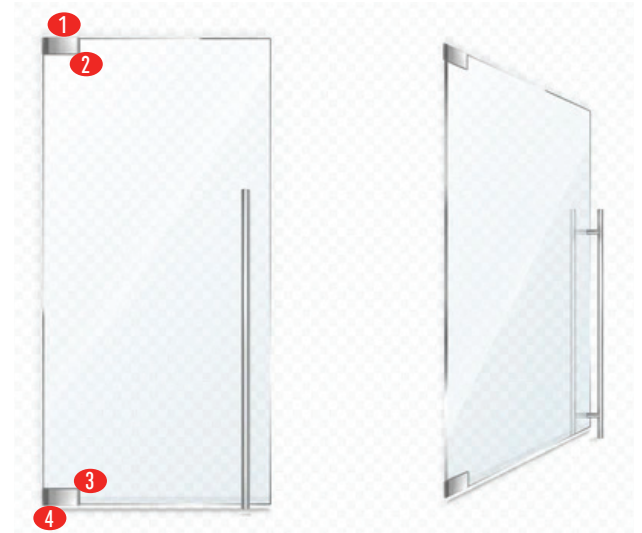
Ideal Patch Door Kit - Without Lock & Handle For 10mm-12mm Glass

Product Specification

- Doors Can Swing Either In and Out
- For 3/8" or 1/2" (10 or 12 mm) Glass
- Cover secured with small 'L' key.
- Kit Includes:-
- IPF2BSS/BL/SA/PSS-1 PC
- IIPF3BS
- /BL/PS/SA-1PC
- IFSACCGPBS-1PC
- IFMH1BSS
- 1PC

Finish: Stainless Steel, Polish Stainless, Matte Black & Satin Anodized

- *Custom Finish- Black, Brown and Others Available On Request



INTERIOR DOOR PATCH FITTINGS



⇒ **IPF2**
Top Door Patch Fitting

- BSS
- PSS
- SA
- BL



⇒ **IPF3**
Bottom Door Patch Fitting

- BSS
- PSS
- SA
- BL



⇒ **IPF2PLUS100**
Top Door Patch Fitting With Big Plate

- BSS
- PSS
- SA
- BL



⇒ **IPF2PLUS135**
Top Door Patch Fitting With Big Plate

- BSS
- PSS
- SA
- BL



⇒ **IFSACCGDP**
Top Pivot for Patch/Point Fitting Doors SS304

- BSS
- BL



⇒ **IFMADJ407**
Adjustable Free Swing Pivot

- BSS



⇒ **IFMH1BSS**
Floor Mounted Free Swing Pivot



⇒ **IWMP32**
Wall Mount Post Pivot

NEW

Over Panel Glass Connectors Patch Fitting



⇒ **IPF1**
Over Panel Side Panel Connecting Patch SS304

- BSS
- PSS
- SA
- BL



⇒ **IPF4**
Wall Mounted Transom Patch SS304

- BSS
- PSS
- SA
- BL



⇒ **IPF610**
Sidelite Mounted Transom Patch With Reversible Door Stop SS304

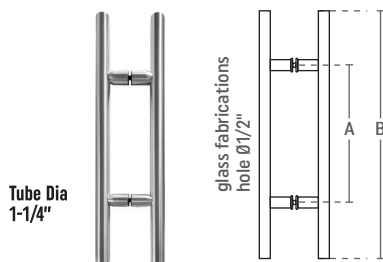
- BSS
- PSS
- SA
- BL



⇒ **IPF70**
Transom Mounted Connector With Two Reversible Door Stops

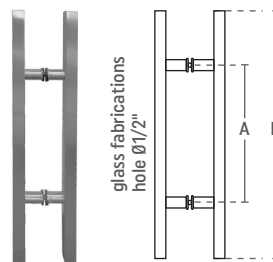
- BS
- BL

COMMERCIAL PULL HANDLES



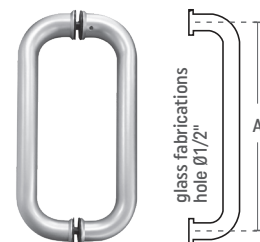
⇒ **IGH5512X12**
CTC 12" Ladder Back-to-Back Pull Overall 24"

- PSS
 - BSS
 - BL
 - BG
- NEW**



⇒ **ILHSQ12X12BS**
Square CTC 12" Ladder Back-to-Back Pull Overall 24"

- BSS
- BL



⇒ **IGHCM12X12**
Tubular Handle Back to Back CTC 12" With Metal Washer

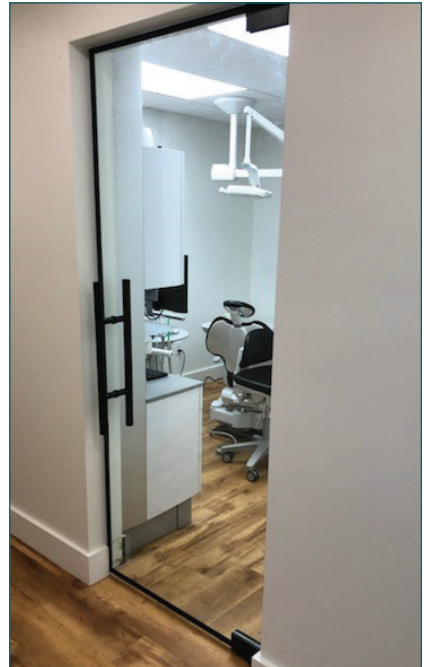
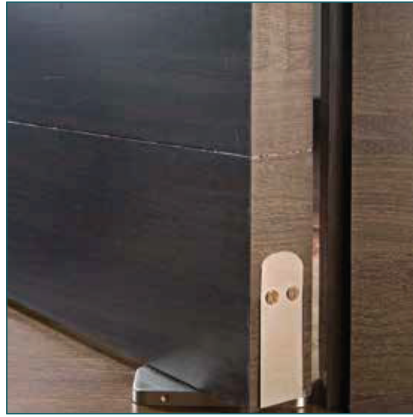
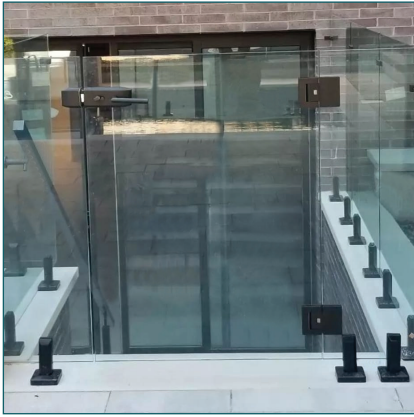
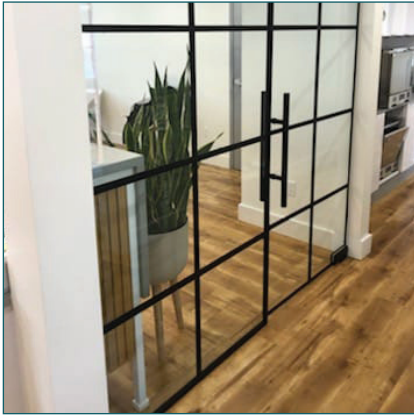
- SA
- BL
- BS

Product Code	CTC Height (inch) A	Overall Height (inch) B
IGH5512X12	12	24
IGH5518X18	18	30
IGH5524X24	24	36
IGH5536X36	36	48
IGH5548X48	48	60
IGH5560X60	60	72

Product Code	CTC Height (inch) A	Overall Height (inch) B
ILHSQ12X12BS	12	24
ILHSQ24X24BS	24	48
ILHSQ48X48BS	48	60
ILHSQ60X60BS	60	72

Product Code	CTC Height (inch) A
IGHCM12X12	12
IGHCM18X18	18
IGHCM24X24	24

BM-BLACK MATTE | BL-BLACK | BSS-BRUSHED STAINLESS STEEL | PSS-POLISHED STAINLESS STEEL | SA-SATIN ANODIZED | BG-BRUSHED GOLD



Head Office:
#20, 951 Denison St, Markham, ON L3R 3W9, Canada

Warehouse:
Unit 7 - 60 Amber Street, Markham, Ontario, Canada. L3R 2Z9.



Follow Us



Email Inquiries: Sales@iglasshardware.com | www.iglasshardware.com | Tel: 905-940-1363