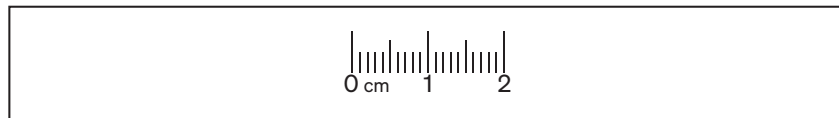


## BRACELET SIZE GUIDE

Measure an existing Trollbeads bracelet to find the desired size.

- To get the best results, you will need to go to the 'printing option' before printing and ensure that the 'Page scaling' option is set to 'None' in the print dialogue box.
- The Bracelet Size Guide must be printed on a full A4 size page. To check that the Bracelet Size Guide has been printed properly, take a ruler and measure the sample below. It should measure exactly 2 cm.



*Please note:* The Bracelet Size Guide is an indicative guide only and therefore may not be an exact measure.

# TRILLBEADS

THE ORIGINAL SINCE 1976

