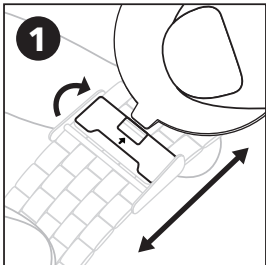




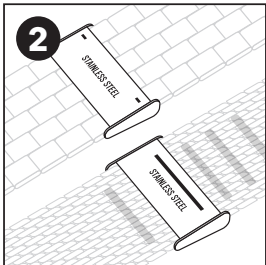
# **ADJUSTMENT BAND**

## **QUICK GUIDE**

[www.nixon.com](http://www.nixon.com)



- Lay watch face-up on a flat surface.
- Insert adjustment tool in slot and lift bracket where indicated by the arrow.
- Slide bracket to desired size, where watch will fasten.

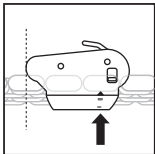
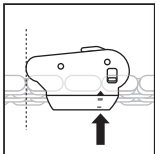


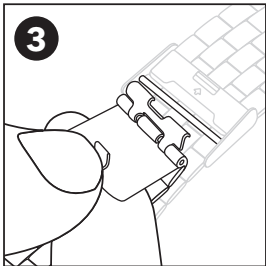
- Make sure bracket is positioned between links or locking grooves, then snap bracket into place by pushing down latch.

**DON'T USE TOO MUCH FORCE OR THE BRACKET CAN BREAK!**

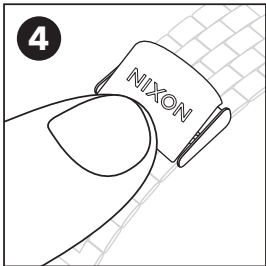
# WARNING:

Forcing the bracket latch down when it's not positioned between the links or locking grooves can break it.





- Hook the band on the bracket bar.



- Press clasp down to secure into place. Click!
- You're done and ready to rock your new Nixon!