



# CB33

## Counterbalanced Walkie Stacker

### CAPACITY

1500kg at 600mm load center

### BATTERY

Compartment: 826mmx333mm x open.  
Anderson 175 Gray—A-11 Minimum  
battery weight 476kg.

### SPEED

24-volt ZAPI Travel controller, separate  
power steering controller.

### TRAVEL

Variable from 0 to 5 km/h empty  
Variable from 0 to 5.5 km/h loaded

### TILT

7° Back 3° Forward

### LIFT

Up to 0.15m/s empty.  
Up to 0.1m/s loaded

### LOWERING

Up to 0.2m/s empty.  
Up to 0.2m/s loaded

### TIRES / WHEELS

#### DRIVE

230 x 75smooth polyurethane

#### LOAD

80 x 60 polyurethane

### HYDRAULICS

Lift cylinder is hard chrome. Self  
contained hydraulic power unit. Pressure  
compensated lowering valves regulates  
lowering speeds.

### ELECTRICAL

Infinitely variable travel controller and AC  
drive motor provides high torque through-  
out the entire drive range. Regenerative  
braking and brushless design drastically  
reduces maintenance.

Travel speed remains constant relative to  
throttle position regardless of the load on  
truck. EPD with built in line contactor



### BRAKES

Electromagnetic brake is mounted on mo-  
tor armature shaft multiplying the braking  
power through the ZK-16 transmission.

Brake is applied when control arm is in the  
vertical or horizontal handle position.  
Travel speed is reduced when forks are  
above 305mm fork height. Position  
hold re-sists roll back on ramps.

### CONTROLS

Travel, lift, lower and tilt functions are  
located in the ergonomic operator handle,  
designed to allow operation with either  
hand. Wrap around guard, reversing  
switch, thumb control, and horn are stand-  
ard.

### TRANSMISSION

Vertically mounted drive motor is direct  
mounted to gear housing. Oil bathed  
bevel gear drive-train transfers power  
to axle. State of the art optimized  
gear technology supplies advantages  
such as zero maintenance, low noise  
level, high efficiency and high  
performance.

### FRAME AND MAST

Bolt-on high visibility I-beam construction,  
lift cylinders are positioned in outer I-  
beam. Dual lifting chains. Class two ITA  
fork carriage with 915mm tall load back rest

### BEARINGS

DRIVE WHEEL-Tapered roller bearings  
sealed in oil bath  
LOAD WHEELS-Sealed ball bearings

### ACCESSIBILITY

Removal of two piece power head cover  
exposes major components for inspection  
and maintenance. Drive wheel is removed  
with one nut.

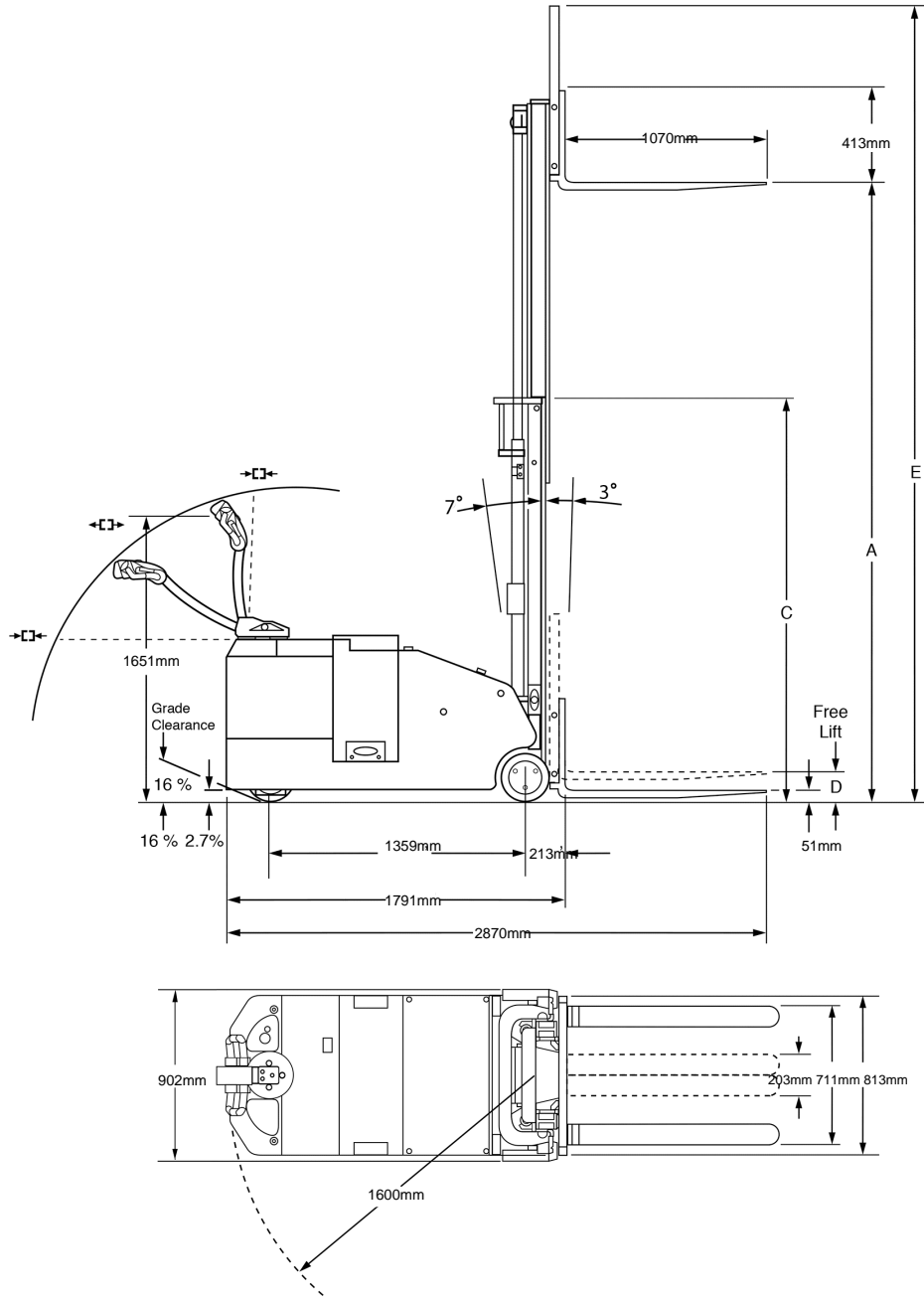
### STANDARD EQUIPMENT

- Regenerative Neutral Braking
- Gas Assist Spring Handle
- Low Battery Lift Interrupt
- Hour Meter BDI Combo Gauge
- Key Switch
- 915mm Tall Load Backrest

### OPTIONAL EQUIPMENT

- 4-Pack Battery Pack



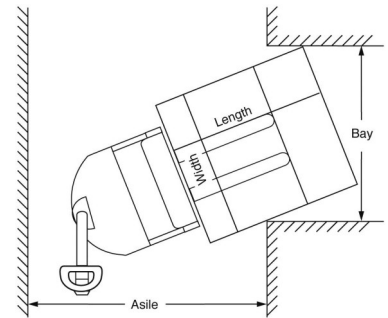


### Aisle Guide

CB33 - Right Angle Stacking

Load Width	Load Length		
	915mm	1016mm	1220mm
915mm	2845mm	2921mm	3124mm
1016mm	2870mm	2946mm	3150mm
1220mm	2921mm	2997mm	3175mm

For ease of use add 152mm to 305mm to aisle dimension listed



Aisle dimensions listed above assume 102mm between loads. Use the larger dimension; load width or load length. For ease of use and add 152mm to 305mm for operator clearance to the appropriate specifications listed above. Truck performance may vary due to application requirements and changes in model design.

Model #	Mast	Lift Height	Col Height	Free Lift	Ext Height w/LBR	Gradability		<sup>3</sup> Weight Chassis Only
		A	C	D	E	Loaded	Unloaded	
<b>1500 Capacity @ 600mm Load Center ITA Class II Fork Carriage</b>								
CB 33-104	Two Stage	2642	1829	152	3556	5%	8%	1991
CB 33-12	Two Stage	3200	2108	152	4115	5%	8%	2130
CB 33-157*	Triple Stage	3988	1829	1270	4902	5%	8%	1852

\*Derate 227kg above 3353mm

<sup>3</sup> Estimated shipping weight without battery