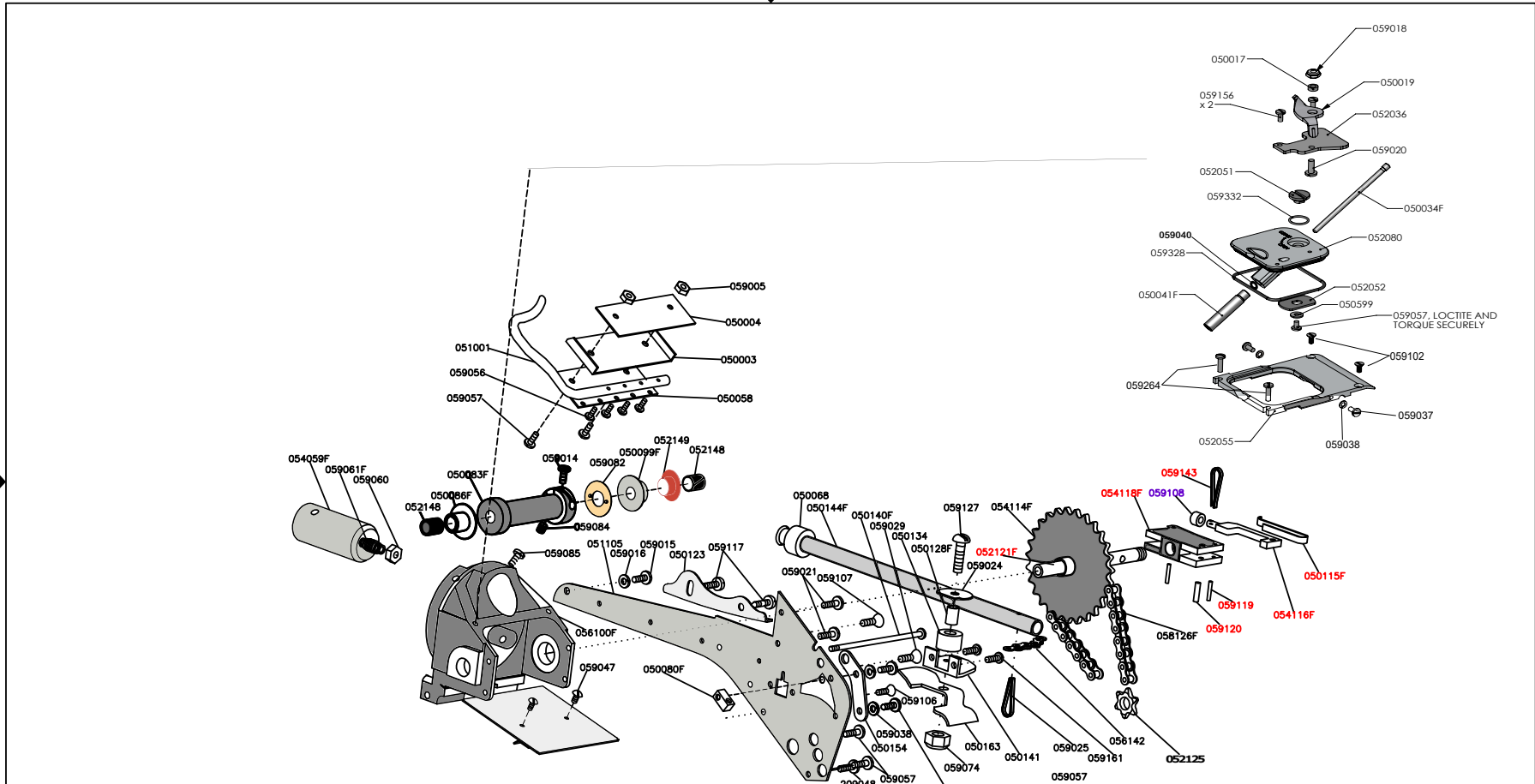


| | | |
|---------------|--|-----------------|
| 07TT-C | Auto Taper Assembly, Carbon Fiber | REV A |
| |  <small>PROFESSIONAL DRYWALL FINISHING TOOLS</small> | |



Red sold as part of kit 215
 Violet -Sold as part of 054116F. Not Sold Separately.

| | | | |
|--------------------------------------|--|-----------------------------------|--|
| 07TT-C | | Auto Taper Assembly, Carbon Fiber | |
| TapeTech | | an AVIA enterprise | |
| PROFESSIONAL DRYWALL FINISHING TOOLS | | REV A | |

| Part Number | Description | Quantity Each | Sold as part of: |
|-------------|-----------------------------|---------------|------------------|
| 050003 | Wiper, Control Valve | 1 | |
| 050004 | Wiper, Retainer | 1 | |
| 050017 | Collar Bushing | 1 | |
| 050019 | Disengaging Cam | 1 | |
| 050023F | Spacer Bar | 1 | |
| 050027 | Lock, Needle Holder | 1 | Kit 200 |
| 050030 | Magnet | 1 | Kit 200 |
| 050034F | Disengaging Rod | 1 | |
| 050041F | Disengaging Rod Bearing | 1 | |
| 050043F | Anvil | 2 | |
| 050046 | Support, Right Chain Roller | 1 | |
| 050050F | Needle Holder | 1 | Kit 200 |
| 050053 | Cam Gooser Release | 1 | |
| 050058 | Control Valve | 1 | |
| 050063 | Cut Off Spring Cover | 1 | |
| 050068 | Gooser & Cutter Chain Stop | 2 | |
| 050070F | Creaser Axle | 1 | |
| 050071F | Front Support | 1 | |
| 050072F | Rear Support | 1 | |
| 050073 | Creaser Wheel | 1 | |
| 050079 | Creaser Crank | 1 | |
| 050080F | Screw Block | 2 | |
| 050081F | Spring | 2 | |
| 050083F | Cable Drum | 1 | |
| 050086F | Head Bushing | 1 | |
| 050090F | Spacer Bar | 1 | |
| 050093F | Taper Wheel | 2 | |
| 050094F | Spool | 1 | |
| 050099F | Head Bushing | 1 | |
| 050109F | Hub | 2 | |
| 050113F | Cutter Block Tube | 1 | |
| 050115F | Spring, Drive Dog | 1 | Kit 215 |
| 050123 | Cam | 1 | |

| Part Number | Description | Quantity Each | Sold as part of: |
|-------------|---------------------------------|---------------|------------------|
| 050128F | Bushing, Chain Roller | 2 | |
| 050132F | Spring, Cut Off | 1 | Kit 340 |
| 050134 | Chain Roller | 2 | |
| 050140F | Screw, 6.52 X 5.09 | 1 | |
| 050141 | Support, Left Chain Roller | 1 | |
| 050144F | Link Tube | 1 | |
| 050145 | Creaser Chain | 1 | |
| 050150F | Hub | 2 | |
| 050154 | Bearing Bracket | 2 | |
| 050163 | Guide, Main Chain | 1 | |
| 050200 | Plastic Piston | 1 | Kit 335 |
| 050203 | Plunger Cup | 1 | Kit 335 |
| 050204 | Cup Washer | 1 | Kit 335 |
| 050205 | Cup Bolt, 1/4-20 X 7/8 Hex Head | 1 | Kit 335 |
| 050212F | Nut | 1 | |
| 050229 | Band | 1 | |
| 050244 | Spool | 1 | |
| 050249 | Creaser Connector | 1 | |
| 050402B | Band Clamp, Black | 2 | |
| 050405B | Keeper Axle, Black | 1 | |
| 050410B | Control Tube Flange, Black | 2 | |
| 050412 | Wheel Keeper Wireform | 4 | |
| 050413 | Control Tube Wheel | 8 | |
| 050418 | Roller Axle | 8 | |
| 050500 | Brake Roller | 1 | |
| 050577 | Brake Torsion Spring | 1 | |
| 050599 | Main Shaft Washer | 1 | |
| 051001 | Outlet Valve Handle | 1 | |
| 051089 | Side Plate, SST | 1 | |
| 051105 | Side Plate, SST | 1 | |
| 051243 | Stub Shaft | 1 | |
| 051248 | Taper Tube, Carbon Fiber | 1 | |
| 051250 | Top Brace, Taper Tube | 1 | |

| Part Number | Description | Quantity Each | Sold as part of: |
|----------------|----------------------------|---------------|------------------|
| 051251 | Bottom Brace, Taper Tube | 1 | |
| 051252 | Control Arm Brace | 1 | |
| 051415 | Control Tube, Carbon Fiber | 1 | |
| 052011 | Drip Guard | 1 | |
| 052036 | Base Bracket | 1 | |
| 052051 | Key | 1 | |
| 052052 | Lock | 1 | |
| 052055 | Taper Head Enclosure | 1 | |
| 052080 | Snap Out Cover | 1 | |
| 052121F | Shaft | 1 | Kit 215 |
| 052148 | Bushing, Plastic | 2 | |
| 052149 | Sprocket Bushing | 1 | |
| 052150 | Brake Adjuster | 1 | |
| 052152 | Side Plate Spacer | 1 | |
| 052214 | Wheel Enclosure | 4 | |
| 052221 | Control Arm Boss | 1 | |
| 052226 | Control Arm Guide, Molded | 1 | |
| 052400B | Spool Mount | 1 | |
| 052401B | Plunger Stop, Small | 1 | |
| 052403 | Plunger Stop Locking Strap | 1 | |
| 052404B | Keeper Yoke | 1 | |
| 052407B | Keeper Tube Cradle | 1 | |
| 052408 | Spool Post | 1 | |
| 052409 | Keeper Wireform | 1 | |
| 052576 | Brake Spring Mount | 1 | |
| 054028 | Gooser Assembly | 1 | |
| 054032F | Push Rod Assy | 1 | |
| 054048F | Baffle Plate Ass'Y | 1 | |
| 054064F | Filler Tube W/Valve | 1 | |
| 054075 | Tape Runner Assy, Right | 1 | |
| 054095F | Creaser Arm Assy | 1 | |
| 054096F | Creaser Arm Assy | 1 | |
| 054101 | Tape Guide Assy. | 1 | |

| Part Number | Description | Quantity Each | Sold as part of: |
|-------------|--|---------------|------------------|
| 054104 | Tape Runner Assy, Left | 1 | |
| 054110F | Drive Shaft Assembly | 1 | |
| 054111F | Gooser Guide | 1 | |
| 054114F | Sprocket Assembly | 1 | |
| 054116F | Drive Dog Assy | 1 | Kit 215 |
| 054118F | Drive Dog Holder Assembly | 1 | Kit 215 |
| 054209F | Main Cable Assy | 2 | Kit 335 |
| 054219 | Control Arm Assy. | 1 | |
| 054245F | Trigger Assembly | 1 | |
| 056022 | Gooser Spring | 1 | Kit 200 |
| 056100F | Taper Head, No Logo | 1 | |
| 056133 | Pyramid Blade, SST | 2 | Kit 340 |
| 056135 | Cutter Chain Assembly, SST. | 1 | Kit 340 |
| 058126F | Drive Chain - S.S. | 1 | |
| 059005 | Nut 4-40 Hex S.S. | 2 | |
| 059012 | Screw 6-32 X 3/8 Fil. Hd. S.S. | 1 | |
| 059013 | Screw 6-32 X 5/16 Rd. Hd. S.S. | 4 | Kit 200 |
| 059015 | Screw 6-32 X 1/4 Fil. Hd. S.S. | 8 | |
| 059016 | Lockwasher, #6 Medium Spring | 7 | Kit 200 |
| 059018 | Stopnut 6-32 Thin Pat. | 3 | |
| 059020 | Screw 6-32 X 3/8 Bind Hd. | 3 | |
| 059021 | Screw, 4-40 X 5/32 | 4 | |
| 059024 | Chain Keeper | 1 | |
| 059025 | Cotter Pin. 5/64 X 1/2 S.S | 1 | |
| 059029 | Screw 6-32 X 5/8 Fl. Hd. S.S | 1 | |
| 059037 | Screw 4-40 X 1/4 Bind Hd. S.S | 5 | Kit 200 |
| 059038 | Lockwasher 4 Med. Spring | 6 | |
| 059040 | O Ring, 568-006 Buna | 1 | |
| 059044 | Insert | 1 | |
| 059047 | Screw 2-56 X 1/8 Bind Hd. S.S | 2 | |
| 059049 | Needle, Gooser | 2 | Kit 200 |
| 059051 | Screw 6-32 X 3/16 Fil. Hd. S.S | 1 | Kit 200 |
| 059056 | Machine Screw, 2-56 X 3/16 Fillister Hea | 4 | |

| Part Number | Description | Quantity Each | Sold as part of: |
|-------------|--|---------------|------------------|
| 059057 | Screw 4-40 x 3/16 Bind Hd. S.S | 23 | |
| 059067 | Key Ring, .875 Diameter | 1 | |
| 059074 | Stopnut, 8-32 Hex, Elas., S.S. | 4 | |
| 059078 | Bearing Nyliner | 2 | |
| 059082 | Drum Washer | 1 | |
| 059084 | Setscrew | 2 | |
| 059085 | Screw 8-32 X 1/4 Fil. Hd. S.S | 1 | |
| 059087 | Nut 3-48 Hex, Miniature S.S. | 1 | |
| 059091 | Screw 6-32 X 1/2 Slotted Fil. Hd., S.S. | 2 | |
| 059092 | Screw 8-32 X 1-1/2, Slotted Rd. Hd., S.S | 1 | |
| 059098 | Shim, Side Plate | 2 | |
| 059102 | Screw 4-40 X .225/.235 Fl.Hd.SST. | 8 | Kit 340 |
| 059106 | Screw 4-40 X 1/8 Slted Fl Hd SST. | 2 | |
| 059107 | Screw 6-32 X 1/4 Fl. Hd. SST. | 1 | |
| 059120 | Axle, Drive Dog | 1 | |
| 059127 | Screw 8-32 X 5/8 Truss Hd. S.S | 2 | |
| 059143 | Cotter Pin 1/16 X 1/2 SST. | 4 | |
| 059156 | Screw 4-40 X 5/16 Bind. Hd. S.S | 4 | |
| 059161 | Screw 4-40 X 3/8 Fil. Hd. S.S | 4 | |
| 059164 | #6 Ext. Washer | 5 | |
| 059201 | 1/4-20 Hex Nut, Slotted | 1 | Kit 335 |
| 059206 | Nut 1/4 - 20 Heavy Hex. S.S 303 | 1 | Kit 335 |
| 059225 | Nut 10-32 Elastic | 2 | |
| 059230 | Screw 5-40 X 7/16 Bind | 2 | |
| 059238 | 1/4-20 X 1/2 Screw Fl Hd Socket Cap | 2 | |
| 059239 | Vial 1/2 X 2 | 1 | |
| 059253 | Vial Cap 1/2 Red | 1 | |
| 059264 | 4-40 X 7/16 Binding Head Screw | 2 | |
| 059323 | 10-32X5/8 Button Hd Soc Cap Screw | 2 | |
| 059328 | O-Ring, 1-3/4 ID x 1-7/8 OD x 1/16 wide | 1 | |
| 059329 | Screw, 10-32 x 1, Phillips FH Undercut | 2 | |
| 059330 | Jam Nut, 10-32 x 1/8 | 2 | |
| 059331 | 10-32 x 5/16 Hex Soc Set TY A Cup Pt | 2 | |

| Part Number | Description | Quantity Each | Sold as part of: |
|-------------|--|---------------|------------------|
| 059332 | O-Ring, 1mm x 11mm | 1 | |
| 059333 | O Ring - 5/32 ID x 9/32 OD x 1/16 Wide | 1 | |
| 059426 | 6-32 X 5/8 Soc. Hd. Cap Screw | 2 | |
| 059429 | O Ring, 5/16 ID x 9/16 OD x .139 Wide | 1 | |
| 209042 | #10 Brass Washer | 2 | |
| 209048 | Screw, 4-40 X 1/8 Bind. Hd. S.S. | 2 | |
| 209058 | 6-32 Brass Nut | 1 | |
| 219095 | Washer | 1 | |
| 359005 | Screw: 6-32 X 1/4 Bind Hd. | 2 | |
| 509010 | Screw: 4-40 X 5/16 Fl. Hd. S.S. | 1 | |
| 509010 | Screw: 4-40 X 5/16 Fl. Hd. S.S. | 4 | |
| 609012 | Stopnut 4-40 S.S | 1 | |
| 709034 | O'Ring 568-210 Buna | 1 | |
| 709043 | #63 "S" Hook 18-8 S.S. | 1 | |
| 809006 | Washer:#14 Brass | 1 | |
| 889009 | 5/32 X 1" Spring Pin. 18-8 S.S. | 2 | |