

CLA-020-212 HAS IT ALL

CARACOLE CLASSIC






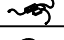

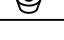
ASSEMBLY INSTRUCTIONS

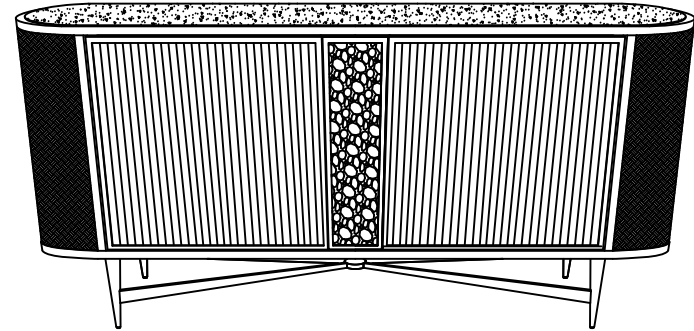
PLEASE UNPACK ALL PARTS AND CHECK QUANTITY AGAINST PARTS LIST BEFORE DISCARDING PACKING CARTON!

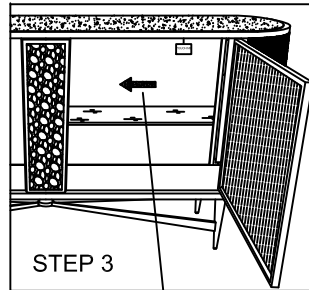
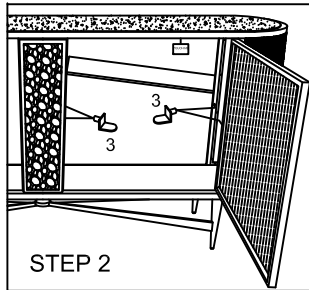
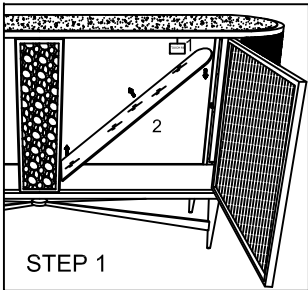
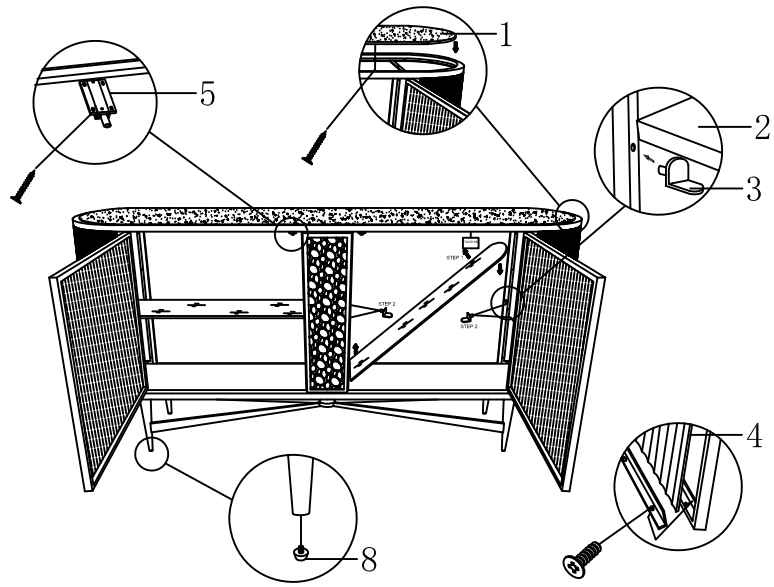
- 1) First put the arc side of the glass shelf (2) into the buffet, and then put the overall into .
- 2) Put the leaf support (3) into the corresponding hole inside the buffet
- 3) Place the glass shelf (2) on the leaf support (3) . Place the glass shelf toward the middle partition to avoid sliding.

*** NOTE KEEP THIS SHEET ***

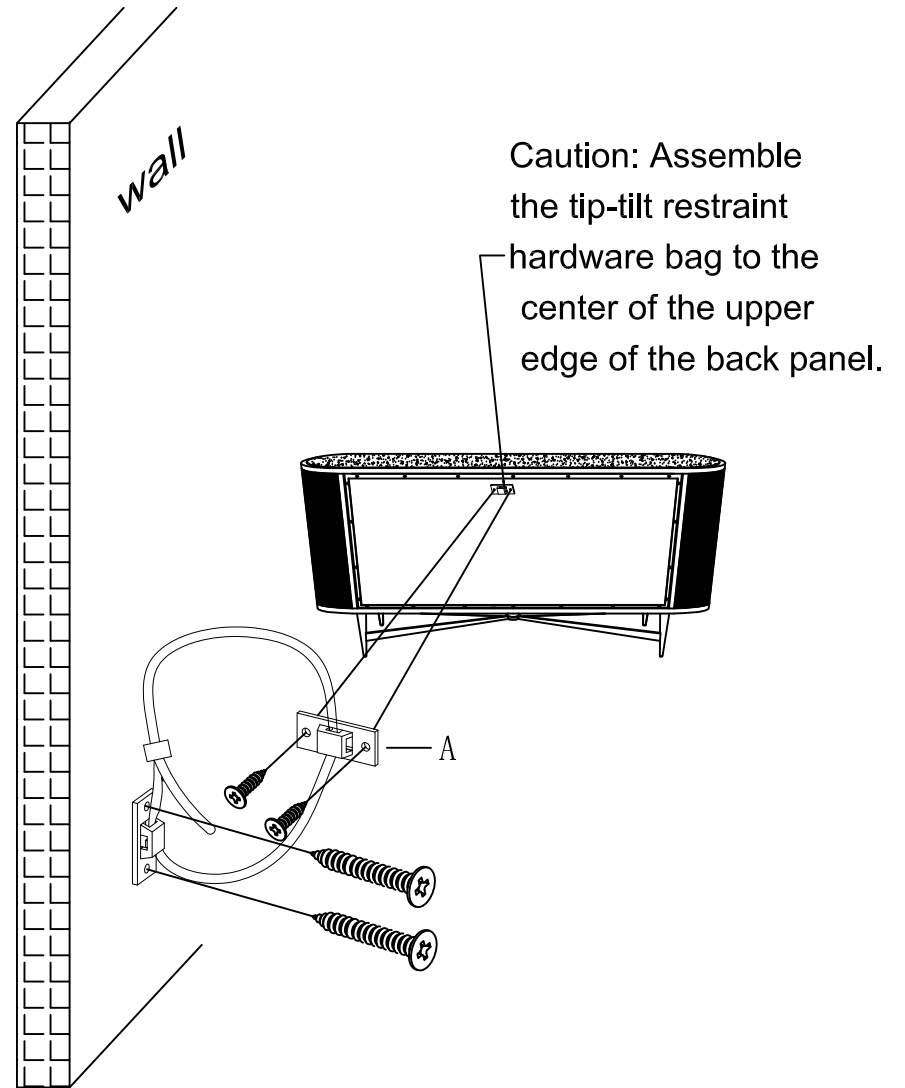
In the unlikely event that you would need a replacement part for your furniture, please contact your local authorized Schnadig International dealer. If you need replacement hardware quickly, it could be purchased from your local hardware store.

CLA-020-212				
HAS IT ALL				
Part List				
Hardware List		Part Number	QTY	
1		Top Panel	CLA-020-212-055	1
2		Glass Shelf	CLA-020-212-028	2
3		Leaf Support	CLA-020-212-030	12
4		Glass Door Insert	CLA-020-212-046	2
5		Magnetic Catch	CLA-020-212-012	2
6		Light	CLA-020-212-008	1 set
7		Tipping Restraint	CLA-020-212-0157	1
8		Adjustable Floor Glide	CLA-020-212-075	4





Place the glass shelf toward the middle partition to avoid sliding.



Caution: Assemble the tip-tilt restraint hardware bag to the center of the upper edge of the back panel.