

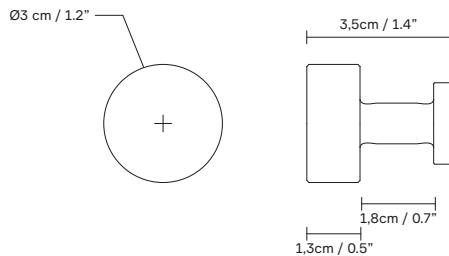
## Angle Hooks, Large

---

Product Fact Sheet

# Angle Hooks, Large

No. (3301) Angle Steel Hook, large / No. (3300) Angle Brass Hook, large /  
No. (3302) Angle Hook Black, large



## Dimensions:

Ø 3 cm / 1.2", D: 3,5 cm / 1.4"

## Product description:

The hook has been created from a single piece of lathe turned solid steel/brass. The grid surface provides a structure that is pleasant to the touch and keeps clothes and towels from slipping off. Depending on your preference you can either let it patinate, so it attains a darker shade, or keep it polished and shiny. The hook is also well-suited as a handle on drawers, cupboards, etc.

## Designer's thoughts:

"With the wall hook we wanted to underline the recurring and fantastic material with the grid surface" – Herman Studio

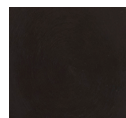
## Finish:



Matt  
blasted



Brass



Matt black  
coated  
Ral 9005  
gloss

## Made-to-order:

Non-standard configurations (special colors etc.) are available upon request at a minimum order quantity

**Product type:** Hook

**Environment:** Indoor

**Material:** Solid stainless steel  
Solid raw brass

**Country of origin:** Denmark

**Net weight:** 120g / 0.2 lb

**Designed by/year of design:** Herman Studio, 2019

**Pre-assembled:** Yes

**Contract use:** Yes

**Note:** Includes socket button screw, wall plug, and T-nut screw

**Scope of application:** Hook, cupboard handle

**Warranty:** Form & Refine provides a five-year product warranty