



Flor series

Designed by Martin Lauritsen,

The Flor series is designed by Martin Lauritsen and inspired by both Scandinavian and Japanese design heritage – crafted with the highest precision in every detail with sophisticated woodwork in FSC®-certified oak and upholstered in fabric or leather. The slightly angled legs provide a strong and stable seat making Flor a perfect choice in both home and professional settings.

Meet the designer

According to industrial designer Martin Lauritsen, a designer's most important task is to develop durable products. High-quality products that last for generations. In addition to creating value and joy in our everyday lives. "Good design is like good music. Both can create positive moods and emotions through their melodies, rhythm, shape, colour, materials and more. I find the emotional qualities that aesthetics can create very interesting, and this is a driving force in my design process, just as much as creating good functional solutions."



BOLIA

04-329-01

Flor Bench 100 cm



Specifications

Country of origin	Assembly	Height	Depth	Seat height	Max weight capacity per seat
Latvia	Delivered assembled	45 cm	40 cm	45 cm	110 kg
Producer	The parcel's measurements				
Kvist Industries	The parcel's measurements 1: 0.20 m ³ , 13.4 kg (D 42.5 cm, W 102.9 cm, H 46.5 cm))				

Test and certifications

FSC® C165134

EN 16139 - L1: General use. Furniture - Strength, durability and safety - Requirements for non-domestic seating. EN 1022:2005 - Domestic furniture - Seating - Determination of stability.

TSCA Title VI compliant



The mark of
responsible forestry

04-329-01

Flor Bench 100 cm



Height

45 cm

Depth

40 cm

Seat height

45 cm

Max weight capacity per seat

110 kg

Producer

Kvist Industries

The parcel's measurements

The parcel's measurements 1: 0.20 m³, 13.4 kg
(D 42.5 cm, W 102.9 cm, H 46.5 cm))

04-329-05

Flor Bench 140 cm



Height

45 cm

Depth

40 cm

Seat height

45 cm

Max weight capacity per seat

110 kg

Producer

Kvist Industries

The parcel's measurements

The parcel's measurements 1: 0.28 m³, 16.75 kg
(D 42.5 cm, W 142.9 cm, H 46.5 cm))

02-329-01

Flor Barstool - H66 cm



Height

66 cm

Depth

37.40 cm

Width

37.50 cm

Max weight capacity

110 kg

Producer

Kvist Industries

The parcel's measurements

The parcel's measurements 1: 0.11 m³, 9.4 kg
(D 70.0 cm, W 40.5 cm, H 40.0 cm))

02-329-05

Flor Barstool - H77 cm



Height

77 cm

Depth

39.70 cm

Width

39.80 cm

Seat depth

77 cm

Max weight capacity

110 kg

Producer

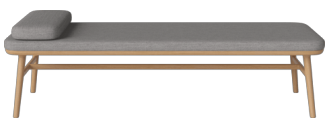
Kvist Industries

The parcel's measurements

The parcel's measurements 1: 0.14 m³, 10.3 kg
(D 79.0 cm, W 42.0 cm, H 43.0 cm))

02-329-20

Flor Daybed



Width

80 cm

Depth

200 cm

Height

45.50 cm

Seat height

45.50 cm

Max weight capacity

110 kg

Producer

Kvist Industries

The parcel's measurements

The parcel's measurements 1: 0.86 m³, 50.0 kg
(D 205.0 cm, W 84.0 cm, H 50.0 cm))

Materials and surfaces

Cover

Qual - Wool



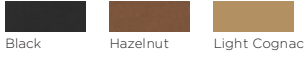
Quattro by Spoor - Leather



London - Flat woven



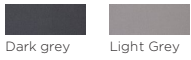
Sydney - Leather



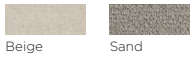
Baize - Flat woven



Gaja C2C - Wool



Monza - Bouclé



Revi - Recycled fibres



Soil - Flat woven



Base

