

LIMITED WARRANTY

The Little Tikes Company makes fun, high quality toys. We warrant to the original purchaser that this product is free of defects in materials or workmanship for one year * from the date of purchase (dated sales receipt is required for proof of purchase). At the sole election of The Little Tikes Company, the only remedies available under this warranty will be the replacement of the defective part or replacement of the product. This warranty is valid only if the product has been assembled and maintained per the instructions. This warranty does not cover abuse, accident, cosmetic issues such as fading or scratches from normal wear, or any other cause not arising from defects in material and workmanship. *The warranty period is three (3) months for daycare or commercial purchasers.

U.S.A and Canada: For warranty service or replacement part information, please visit our website at www.littletikes.com, call 1-800-321-0183 or write to: Consumer Service, The Little Tikes Company, 2180 Barlow Road, Hudson OH 44236, U.S.A. Some replacement parts may be available for purchase after warranty expires—contact us for details.
Outside U.S.A and Canada: Contact place of purchase for warranty service. This warranty gives you specific legal rights, and you may also have other rights, which vary from country/state to country/state. Some countries/states do not allow the exclusion or limitation of incidental or consequential damages, so the above limitation or exclusion may not apply to you.



'Let's care for the environment!'

The wheelie bin symbol indicates that the product and its batteries must not be disposed of with other household waste. Please use designated collection points or recycling facilities when disposing of the item.

Please keep this manual as it contains important information.
 Illustrations are for reference only. Styles may vary from actual contents.

© The Little Tikes Company, an MGA Entertainment company. LITTLE TIKES® is a trademark of Little Tikes in the U.S. and other countries. All logos, names, characters, likenesses, images, slogans, and packaging appearance are the property of Little Tikes.

Printed in China

US/CA - Little Tikes Consumer Service
 2180 Barlow Road, Hudson, Ohio 44236 U.S.A.
 Phone: 1-800-321-0183
 E-mail: service@littletikes.com

UK - MGA Entertainment UK Ltd.
 50 Presley Way, Crownhill, Milton Keynes, MK8 0ES, Bucks, UK.
 Little Tikes Consumer Services
 P.O. Box 2040 Hockley, Essex, SS5 4BF
 Phone: 0 800 521 558
 E-mail: support@littletikesstore.co.uk

EU - MGA Entertainment (Netherlands) B.V. Baronie 68-70,
 2404XG, Alphen a/d Rijn, The Netherlands
 Tel: +31-172-758-010

AU/NZ - Imported by MGA Entertainment Australia Pty Ltd.
 Suite 5.05, 32 Delhi Road,
 Macquarie Park NSW 2113. AU.
 Tel: 1 300 059 676
 Email: au-sales@mgae.com



0623-0-E/INT



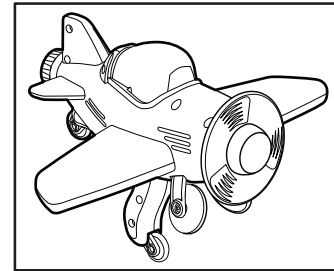
www.littletikes.com
www.littletikes.co.uk
www.littletikes.com.au



BUG VACUUM AIRPLANE

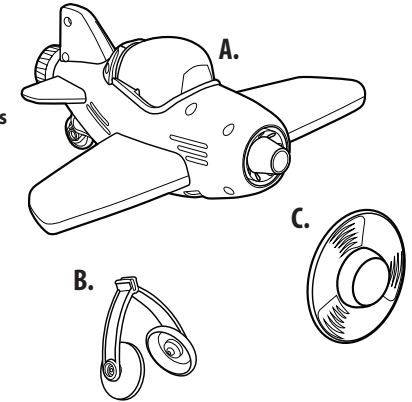
SKU: 663277
 AGES 3+ YEARS

ADULT SUPERVISION RECOMMENDED
 ADULT ASSEMBLY AND BATTERY
 INSTALLATION REQUIRED



CONTENTS

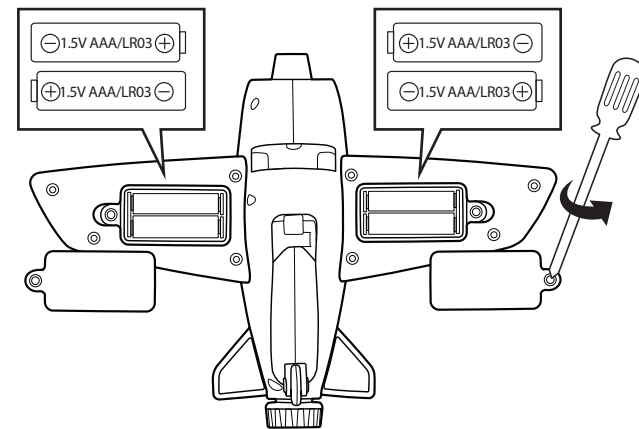
- A. 1 Bug Vacuum
- B. 1 Detachable Tweezers
- C. 1 Magnifying Lens



BATTERY INSTALLATION MUST BE COMPLETED BY AN ADULT

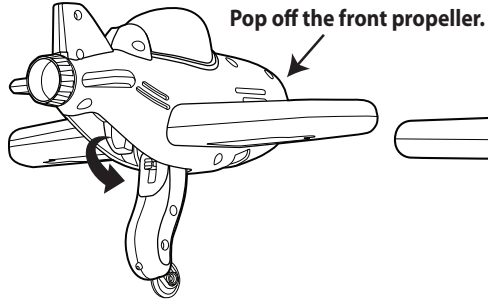
Before playing, an adult must install fresh alkaline batteries (not included) in the unit. Here's how:

1. Turn the airplane over.
2. Using a Phillips screwdriver (not included) remove the screws and battery compartment covers from the airplane.
3. Install four (2 each side) 1.5V AAA (LR03) alkaline batteries (not included) making sure the (+) and (-) ends face the proper direction as indicated inside the battery compartment.
4. Replace the compartment covers and tighten the screws.

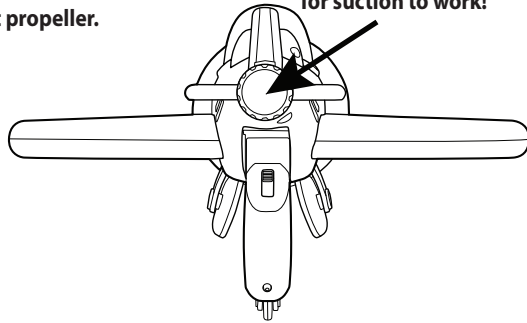


GATHER AND COLLECT BUGS!

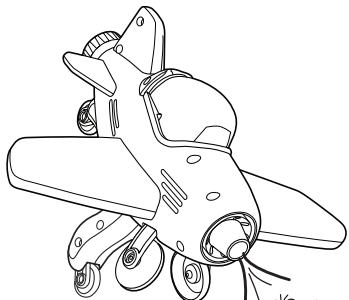
1. Pull down the handle from the rear of the airplane.



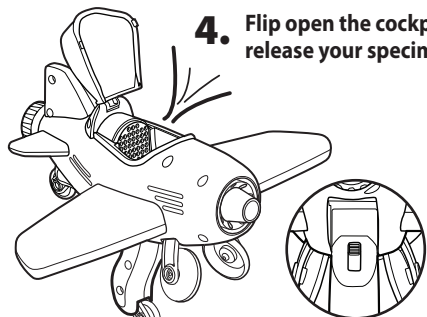
2. Press to start/stop suction. **NOTE: handle must be down for suction to work!**



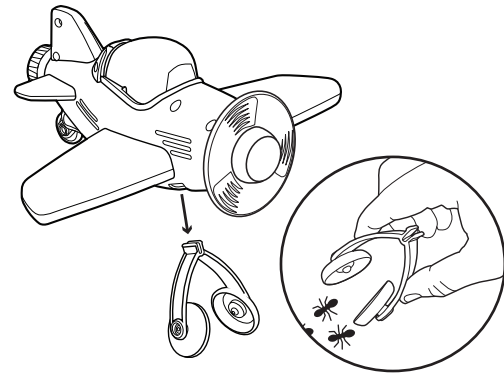
3. Gently gather your specimens using the bug vacuum.



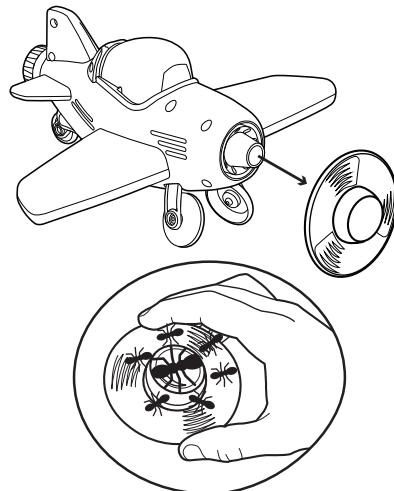
4. Flip open the cockpit to release your specimens.



Press down on the button to return the handle.



5. Remove the landing gear to use tweezers; squeeze them together to gently pick up specimens.



6. The front propeller is also a magnifying lens!

IMPORTANT INFORMATION

- ADULT ASSEMBLY REQUIRED.
- Keep water away from the battery compartment.
- This toy can be cleaned with a damp (not wet) cloth, please ensure that no moisture enters the electronics or battery compartment.

BATTERY SAFETY INFORMATION

- Use only size "AAA" (LR03) alkaline batteries (4 required).
- Charging of rechargeable batteries should only be done under adult supervision.
- Remove rechargeable batteries from the product before recharging.
- Do not mix old and new batteries.
- Do not mix alkaline, standard (carbon-zinc), or rechargeable batteries.
- Be sure to insert the batteries correctly and follow the toy and battery manufacturer's instruction.
- Always remove exhausted or dead batteries from the product.
- Dispose of dead batteries properly: do not burn or bury them.
- Do not attempt to recharge non-rechargeable batteries.
- Avoid short-circuiting battery terminals.
- Remove batteries before placing the unit into storage for a prolonged period of time.

FCC COMPLIANCE

NOTE: This equipment has been tested and found to comply with the limits for a Class B digital device, pursuant to Part 15 of the FCC Rules. These limits are designed to provide reasonable protection against harmful interference in a residential installation. This equipment generates, uses and can radiate radio frequency energy and, if not installed and used in accordance with the instructions, may cause harmful interference to radio communications. However, there is no guarantee that interference will not occur in a particular installation. If this equipment does cause harmful interference to radio or television reception, which can be determined by turning the equipment off and on, the user is encouraged to try to correct the interference by one or more of the following measures:

- Reorient or relocate the receiving antenna.
- Increase the separation between the equipment and receiver.
- Connect the equipment into an outlet on a circuit different from that to which the receiver is connected.
- Consult the dealer or an experienced radio/TV technician for help.

This device complies with Part 15 of the FCC Rules. Operation is subject to the following two conditions: (1) This device may not cause harmful interference, and (2) this device must accept any interference received, including interference that may cause undesired operation. Caution: Modifications not authorized by the manufacturer may void users authority to operate this device.

CAN ICES-3 (B) / NMB-3 (B).