



DINO DUNE BUGGY™



SKU: 660078C3X1

ADULT SUPERVISION REQUIRED
ADULT ASSEMBLY AND BATTERY INSTALLATION REQUIRED

USER GUIDE

Illustrations are for reference only. Styles may vary from actual contents. Please remove all packaging including tags, ties & tacking stitches before giving this product to a child.

FOR ASSEMBLY VIDEO:



⚠️ WARNING!

- **ADULT ASSEMBLY REQUIRED.**
- Adult assembly required. It contains potentially hazardous sharp point in unassembled state, please keep out of reach of children.
- All fasteners should be fully tightened. Children should not handle parts, including the battery and electrical components, or help with assembling the vehicle.
- Please keep this manual as it contains important information.
- Never use near staircase, steps, pools, hot surfaces, or areas that may be hazardous to a child.
- Do not use if damaged or broken.
- Follow the instruction step by step to assemble the product correctly, potential hazards may resulting from incorrect assembly.



DO NOT RETURN THIS ITEM TO THE STORE

The store does not stock replacement parts. Please contact service center for assistance.



ATTENTION



CHARGE

Battery must be fully charged before use.

SAFETY WARNINGS

WARNING:

READ AND FOLLOW ALL INSTRUCTIONS IN THIS USER GUIDE TO ENSURE A SAFE RIDE. Failure to read and understand all information in this user guide increases risk of injury due to falls or other incidents. Riding the unit takes skill and must be learned under adult supervision. By riding, users risk serious injury or death from collisions, falls or loss of control.

RIDER SPECIFICATIONS

WARNING:

NOT FOR USERS UNDER AGE 3 OR HEAVIER THAN 68.5 LBS (31.2 KG). USERS SHOULD NOT EXCEED THE TOTAL MAXIMUM RECOMMENDED WEIGHT LIMIT OF 137 LBS (62.4 KG) - including backpacks and other items that might be carried. Exceeding the weight limit could injure the rider and damage the unit. Rider weight alone does not necessarily mean a person's size is appropriate to fit or maintain control of the unit. Keep this product away from small children and remember that this product is only intended for use by persons who are, at minimum, comfortable and competent while operating it.

Children under the age of 3 should not be permitted to use this product. The recommended age of 3 to 6 is only an estimate and can be affected by the rider's size, weight, maturity or skills - not every rider 3 to 6 years will be suited to the product. Any rider unable to fit comfortably on the unit should not ride. **A parent's decision to allow his or her child to ride this product should be based on the child's maturity, skill and ability to follow rules. It is emphasized that adults are strongly advised not to disregard this recommendation or permit young children to ride this unit.**

Because products like this ride-on present potential hazards plainly associated with their use, THE NEED FOR EXERCISE OF PARENTAL RESPONSIBILITY IN SELECTING RIDING PRODUCTS APPROPRIATE TO THE AGE OF A RIDER, OR PARENTAL SUPERVISION IN SITUATIONS IN WHICH CHILDREN OF VARIOUS AGES MAY HAVE ACCESS TO THE SAME RIDING PRODUCTS, IS IMPORTANT. Not every product is appropriate for every age or size of a user, and recommendations are intended to reflect the nature of the hazards and the expected mental or physical ability, or both, of a rider to cope with the hazards.

Persons with any mental or physical conditions that may make them susceptible to injury, impair their physical dexterity or mental capabilities to recognize, understand and follow safety instructions, and/or hinder their ability to understand the hazards inherent in a product's use, should not use or be permitted to use products inappropriate for their abilities. Persons with heart conditions, head, back or neck ailments (or prior surgeries to those areas of the body), or pregnant women should not operate this product.

Only under adult supervision can this product be used by children ages 3 to 6 years or by persons with reduced physical, sensory or mental capabilities or lack of experience and knowledge. It is the responsibility of a competent adult to instruct riders how to use this product in a safe manner and help them understand the hazards involved. Children shall not play with the product in any way other than its intended use.

WARNING:

Riding any electric product can be a hazardous activity. Certain conditions may cause the equipment to fail without fault of the manufacturer. Like other electric ride-on products, this unit is intended to move, and it is therefore possible to lose control, fall off and/or get into dangerous situations that no amount of care, instruction or expertise can eliminate. If such things occur, the user can be seriously injured or die, even when using safety equipment and other precautions. RIDE AT YOUR OWN RISK AND USE COMMON SENSE.

INSURANCE

WARNING:

Your insurance policies may not provide coverage for accidents involving the use of this electric ride-on product. To determine if coverage is provided, contact your insurance company prior to use.

BATTERY AND CHARGER USAGE

WARNING:

BATTERY INFORMATION

Check the battery charge before using the product. Do not ride the unit when the battery is low. The ride-on may stop operating and cause you to fall. Only use the included charger to charge the battery in the unit.

USING THE CHARGER

- The charger supplied with the unit should be regularly examined for damage to the cord, plug, enclosure and other parts. In the event of such damage, the product must not be charged until the charger has been replaced.
- Use caution when charging.
- The charger is not a toy. Charger should be operated by an adult.
- Do not operate the charger near flammable materials.
- Unplug charger and disconnect from product when not in use.
- Always disconnect from the charger prior to wiping down and cleaning your product with a damp cloth.
- Use the charger in dry locations only.

FUTURE USE AND OTHER RIDERS

WARNING:

- Keep these instructions for future reference.
- Periodically review this information and make sure that you understand all safety warnings and instructions.
- Do not let others ride the unit until they have read this entire user guide.
- Only two riders are permitted at a time.
- Riders other than the owner are only permitted to ride the unit after they fully understand how to operate the unit and can demonstrate safe usage of all components before riding.

OPERATIONAL SAFETY

WARNING:

Any type of wheeled activity can be hazardous. Wheels are intended to move and it is possible to get into dangerous situations and/or lose control and/or fall off. In such situations, serious injury or death may occur. Always be aware of activity around you. Only use the unit in areas free from fixed or moving hazards. Watch your surroundings for pedestrians, animals and riders of other wheeled products or vehicles. Never use near motor vehicles. Not to be used in traffic.

WARNING! This unit is not equipped with brakes.

WARNING:

- Never operate any moving product, including this unit, under the influence of drugs or alcohol.
- Ride defensively. Watch out for potential obstacles that could catch your wheel(s) or force you to swerve suddenly or lose control. Avoid pedestrians, skaters, scooters, bikes, children and animals who may cross your path, and respect the rights and property of others.
- Only use in an area that is suitable for safe operation.
- Never carry passengers or allow more than two persons at a time to ride the product. Never hitch a ride with another product.
- Ensure all safety labels are in place and understood by everyone, especially the rider.
- Do not use headphones or a cell phone while riding.
- Always maintain a safe speed. Do not move faster than you are comfortable with, regardless of the unit's speed abilities.
- Do not make sharp turns while accelerating.
- Do not attempt stunts or tricks on the unit. It is not made to withstand abuse from misuse. Racing, stunt riding, or other maneuvers also enhance the risk of losing control, or may cause uncontrolled rider actions or reactions.
- The unit is intended for use on flat, dry surfaces, such as pavement or level ground, without loose debris, such as sand, leaves, rocks or gravel.
- Only use this product on completely smooth surfaces. Avoid obstacles and slippery surfaces, which could result in a loss of balance or traction and cause a fall.
- Avoid sharp bumps, drainage grates, and sudden surface changes.
- Do not ride the product in wet or icy weather. Do not immerse the product in water, as the electrical and drive components could get damaged by water or possibly create other unsafe conditions.
- Wet, slick, bumpy, uneven or rough surfaces may increase risks. Do not ride this product in mud, ice, puddles or water. Avoid excessive speeds that can be associated with downhill rides.
- Never use near steps or swimming pools.
- Do not ride at night or when visibility is limited, even if the product has an LED light.
- Be aware of your height when using the unit. Be careful of door frames, branches, signs or lower obstructions.
- Be careful and know your limitations. Risk of injury increases as the degree of riding difficulty increases. The rider assumes all risk associated with aggressive riding activities.
- Do not allow hands, feet, hair, body parts, clothing, or similar articles to come in contact with moving parts, wheels, or drive train chain while the motor is running.



SAFETY WARNINGS CONTINUED

INSPECTION BEFORE USE

⚠️ WARNING:

Always inspect the unit prior to use. Properly inspecting and maintaining this product can reduce the risk of injury. Before use, check to confirm that any and all guards and covers originally supplied by manufacturer are in place and in serviceable condition. Check that the brake system is functioning properly, that the tires are in good condition and have sufficient tread remaining. The unit should be maintained and repaired in accordance with the manufacturer's specifications using only the manufacturer's authorized replacement parts. DO NOT open the unit, or you risk voiding the limited warranty.

HARDWARE

Before every ride, check all parts, such as nuts, bolts, fasteners, etc. to ensure they are secure and assembled correctly. There should not be any unusual rattles or sounds from loose parts or broken components. If the product is damaged, do not ride.

WHEELS

Practice riding only in wide open areas clear from curbs, parking blocks and other obstacles, including things you may fall on or into if you lose your balance. Impacting the wheels against any hard surface can damage the unit. Wheels are not covered under your limited warranty.

SAFETY GEAR AND ATTIRE

Always wear proper protective equipment, such as an approved safety helmet (with chin strap securely buckled). A helmet may be legally required by local law or regulation in your area. Elbow pads, kneepads, wrist guards, a long-sleeved shirt, long pants and gloves are recommended. Always wear athletic shoes (lace-up shoes with rubber soles) and keep shoelaces tied and out of the way of the wheels, motor and drive system. Never ride barefooted or in sandals.

LOCAL LAWS OR REGULATIONS

Follow all local laws and regulations regarding how and where to use the product legally. Follow all applicable laws for vehicles and pedestrians. Operators/riders shall adhere to all manufacturer's recommendations and instructions, as well as comply with all laws and ordinances, including: units without headlights shall be operated only with adequate daylight conditions of visibility, and owners/riders should highlight and make the ride-on conspicuous, including the use of lighting, reflectors, and for low-riding units, signal flags on flexible poles.

BATTERY WARNINGS

⚠️ DANGER:

To prevent electric shock, do not immerse in water; wipe clean with a damp cloth.

⚠️ WARNING:

TO PREVENT FIRE, EXPLOSIONS OR SERIOUS INJURY

- Read the safety instructions on the battery.
- Examine the battery, charger, and all connections for excessive wear or damage before each use. Do not use if damage or wear is found. Replace immediately.
- Always secure the battery using the battery retainer.
- Only carry the battery by holding onto the main casing.
- Never modify the electrical system.
- Use only MGA battery and charger specifically meant for this product.
- Do not use MGA components in other battery operated vehicles/toys.
- Do not touch motor after prolonged periods of use. Motor housing may be hot. Handle carefully.
- Rechargeable batteries are only to be charged by adults.
- This product can expose you to chemicals including Lead, which is known to the State of California to cause cancer and birth defects or other reproductive harm. For more information go to: www.P65Warnings.ca.gov

⚠️ DANGER/POISON:

- The battery contains corrosive acid that can cause blindness or burns. Contact physician immediately if exposed.
- Keep out of reach of children.
- Do not open battery.

BATTERY CARE

- The battery must be handled by adults only. The battery is heavy and contains sulfuric acid.
- If the battery begins to leak, avoid contact with the leaking acid and place the battery in a plastic bag. If acid comes in contact with skin, eyes, or is internally ingested contact a physician immediately. See section titled "Battery Disposal" for proper disposal instructions.
- Never allow the battery to discharge completely. Battery should be charged before it is completely drained.
- Charge the battery before storing the vehicle.
- Fully charge the battery at least once per month, even if the product hasn't been used. Leaving the battery in a discharged state can shorten the life of the battery.
- Charge the battery after each use, regardless of how long the vehicle was used.
- Store the battery in temperatures between 35 °F (1.7 °C) and 77 °F (25 °C) for optimal performance.
- Never charge the battery longer than 12 hours. Failure to follow these instructions may damage your battery.

BATTERY DISPOSAL

1. Recycle or dispose of non-spillable sealed lead-acid battery in an environmentally sound manner.
2. Do not dispose of your lead-acid battery in a fire. The battery may explode or leak.
3. Do not dispose of your lead-acid battery in your regular household trash. The incineration, landfilling, or mixing of sealed lead-acid batteries with household trash is prohibited by law in most areas.
4. Return an exhausted battery to a federal or state approved lead-acid battery recycler, such as a local seller of automotive batteries. Contact your local waste management officials for other information regarding the environmentally sound collection, recycling and disposal of lead-acid batteries. If you live in the State of Florida or the State of Minnesota, it is prohibited by law for anyone to throw away lead-acid batteries in the municipal waste stream.

NOTE

Never store the product in freezing or below freezing temperatures. Freezing will permanently damage the battery. Failure to charge the battery at least once a month may result in a battery that will no longer accept a charge.

⚠️ CAUTION: TO AVOID BATTERY LEAKAGE

- DO NOT incinerate used batteries.
- DO NOT dispose of batteries in fire.
- DO NOT mix old and new batteries or types of batteries.
- DO NOT use rechargeable batteries.
- DO NOT recharge non-rechargeable batteries.
- DO NOT short-circuit the supply terminals.
- Different types of batteries should not be mixed.
- Only batteries of the same or equivalent type as recommended are to be used.
- Exhausted batteries should be removed from the toy.
- Dispose of batteries safely.

BATTERY SPECIFICATION:


12V/10AH



INPUT

100-240V~50-60Hz
1A max.



- NOMINAL VOLTAGE: 12V  ONLY CHARGE THE BATTERY IN A WELL-VENTILATED AREA AWAY FROM HEAT SOURCES AND FLAMMABLE MATERIALS.

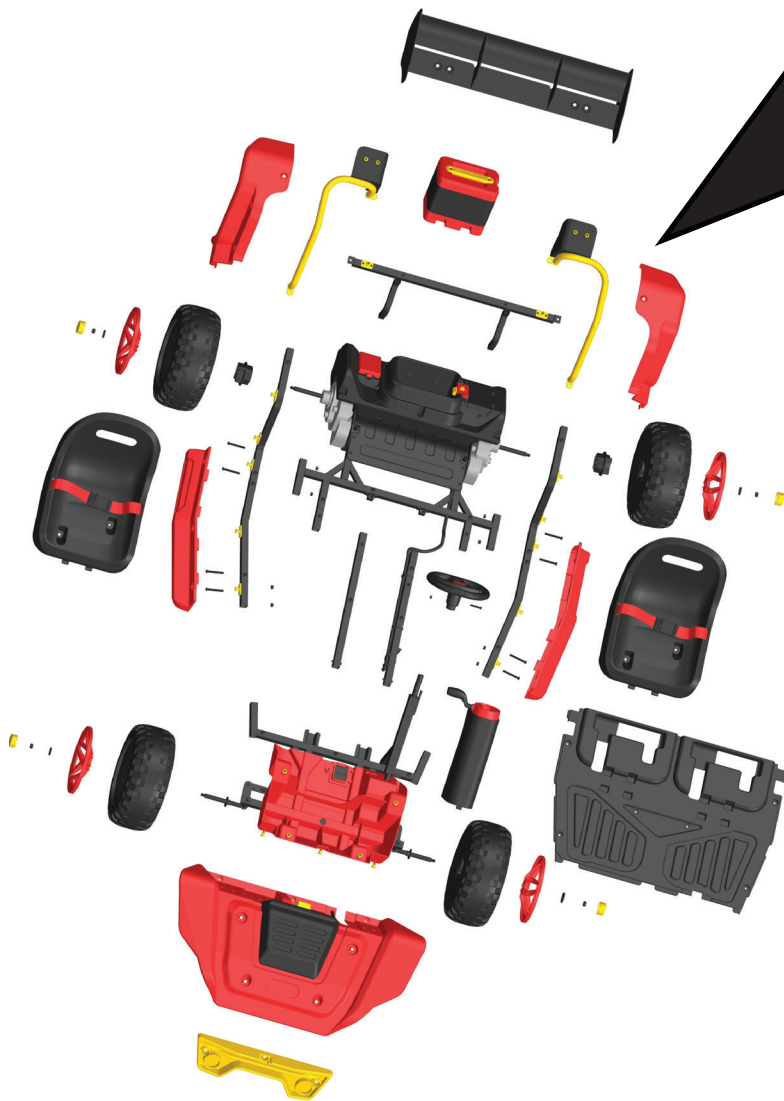
IMPORTANT! THIS PRODUCT SHOULD ALWAYS BE USED UNDER ADULT SUPERVISION.

This item may only be used with a rechargeable 12V/10Ah. battery and 12V battery charger.
Battery Type: Sealed lead-acid rechargeable,
12 Volt 10Ah
Power input for Charger: A/C 100-240 Volts,
50/60 Hz
Power output to Battery: DC 12Volts, 1000mA



CONTENTS

BEFORE you begin assembly, make sure you have all the parts listed below. Questions? We're here to help. Little Tikes® Consumer Service: 1-800-321-0183
Clear a flat surface to lay out all the materials so that everything is close at hand.

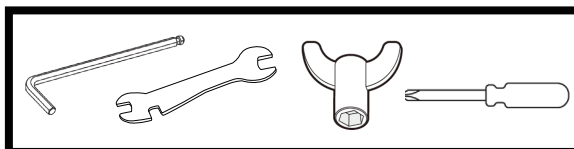


6607801 (x1)	6607802 (x1)	6607803 (x1)	6607804 (x1)	6607805 (x1)
6607806 (x1)	6607807 (x1)	6607808 (x1)	6607809 (x1)	6607810 (x1)
6607812 (x1)	6607813 (x1)	6607814 (x1)	6607815 (x1)	6607816 (x4)
6607818 (x4)	6607819 (x1)	6607820 (x1)	6607821 (x2)	6607822 (x4)
6607825 (x1)	6607826 (x1)	6607827 (x19) M6*18	6607828 (x1) M6*32	6607829 (x8) M6*50
6607831 (x4) M8	6607832 (x4)			

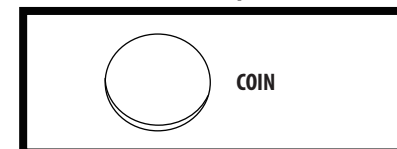
* Extra hardware is included for future use. Store away from small children.

6607827 (x2) M6*18	6607828 (x1) M6*32	6607829 (x1) M6*50	6607830 (x4) M6	6607831 (x1) M8	6607832 (x1)
-----------------------	-----------------------	-----------------------	--------------------	--------------------	--------------

INCLUDED TOOLS:



TOOL REQUIRED: (Not Included)



ASSEMBLY

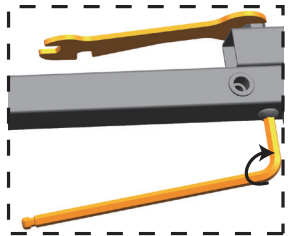
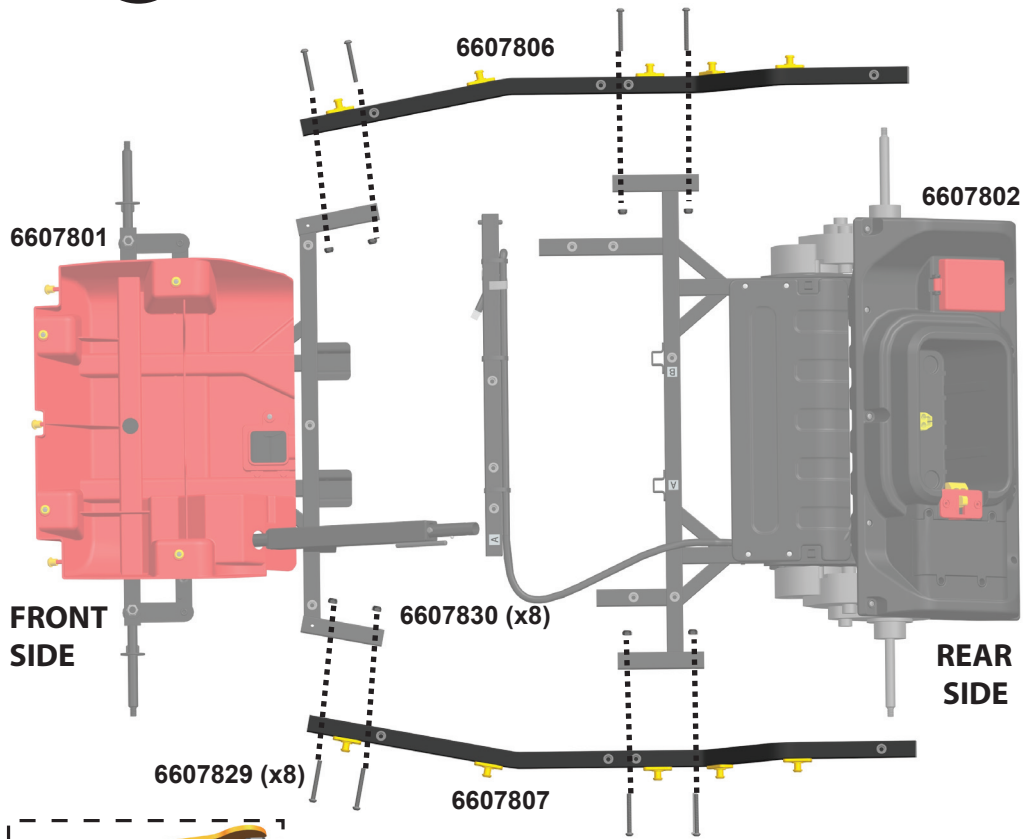
HARDWARE REQUIRED:

6607829 (x8)

6607830 (x8)



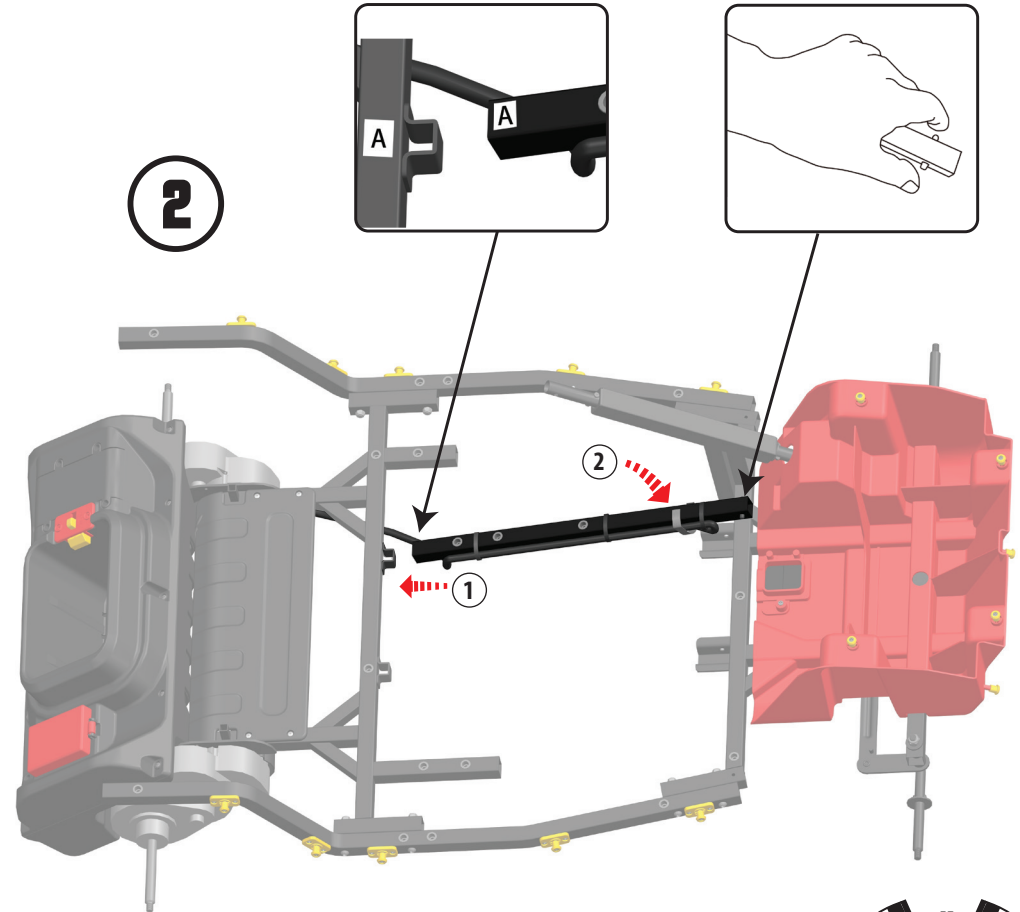
1



1 Insert the bar.

2 Press and hold the two spring buttons on the other side of the bar.

2

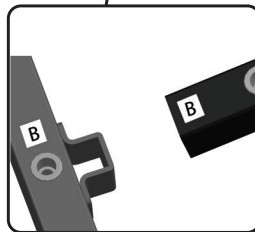
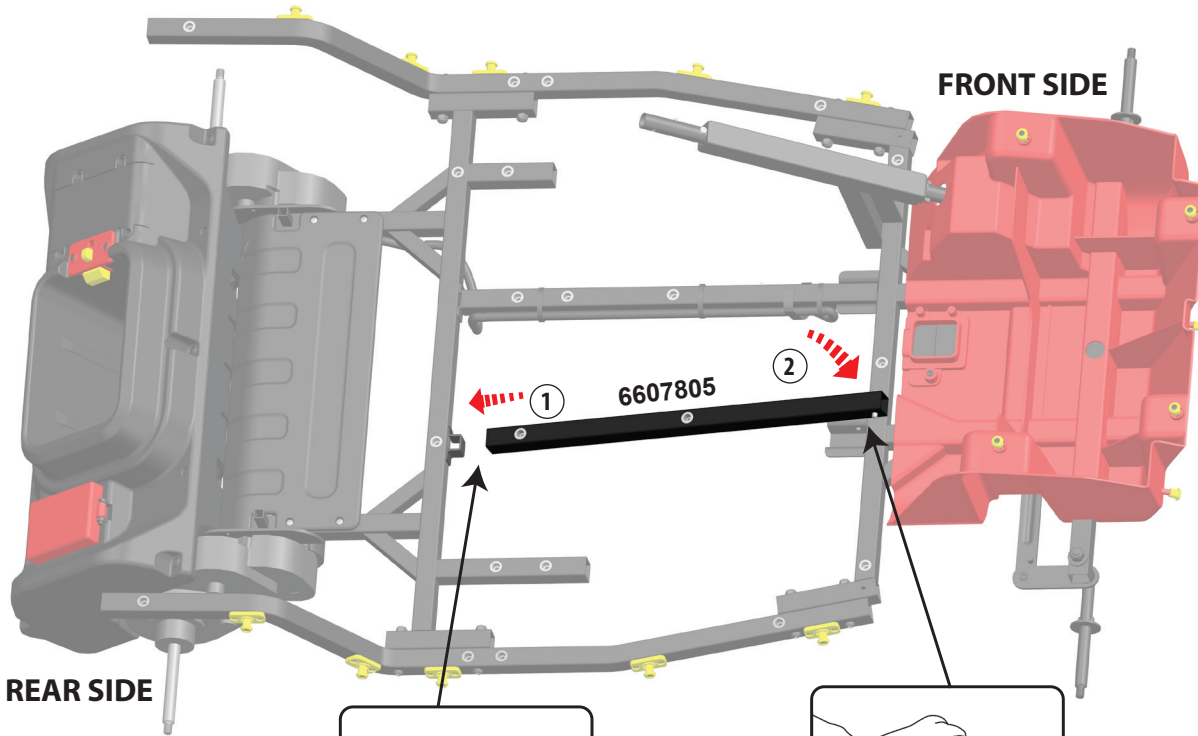


HARDWARE REQUIRED:

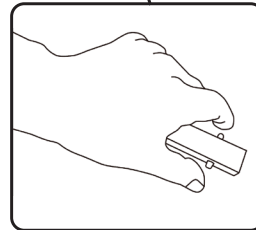
6607827 (x2)



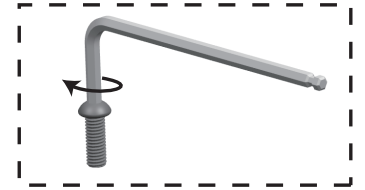
3



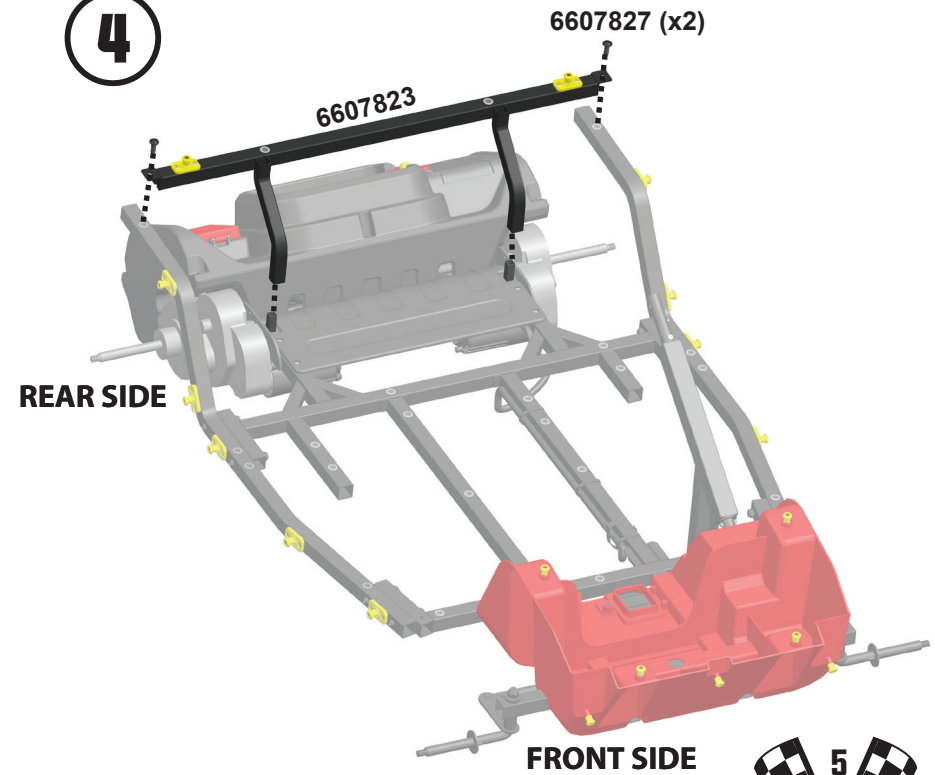
1 Insert the bar.



2 Press and hold the two spring buttons on the other side of the bar.



4



5

5

HARDWARE REQUIRED:

6607831 (x4)



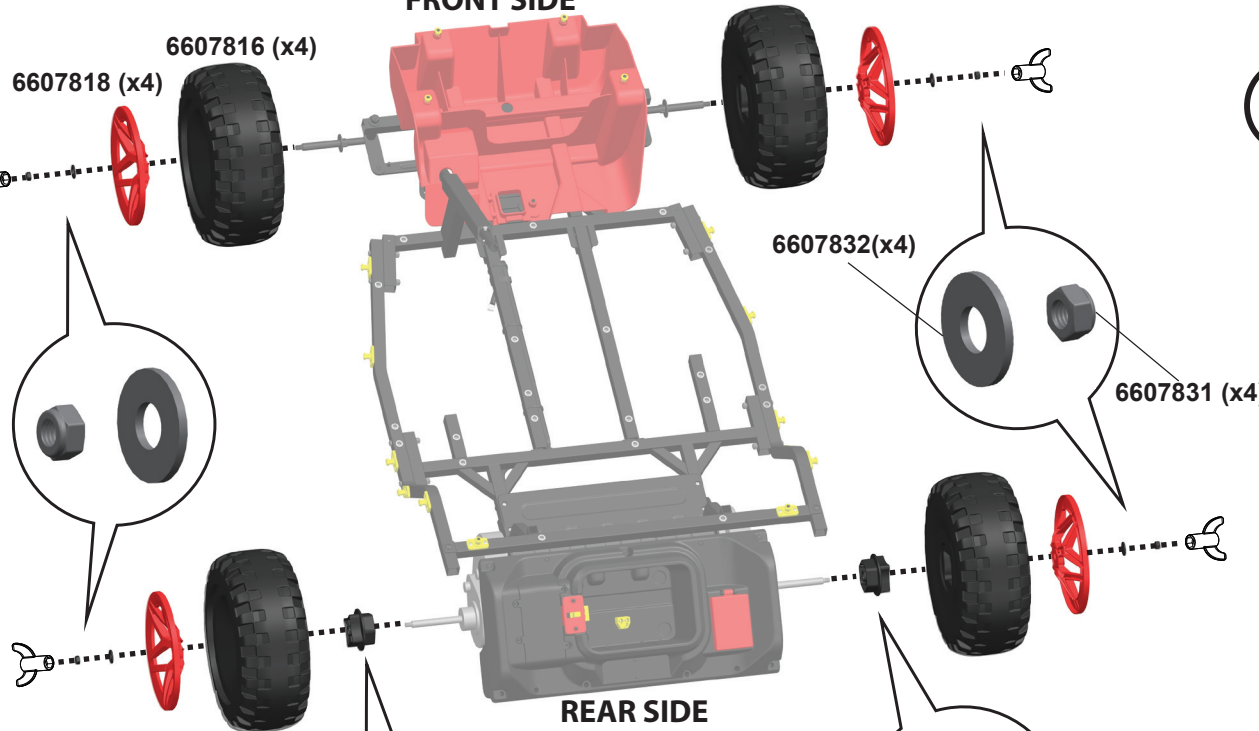
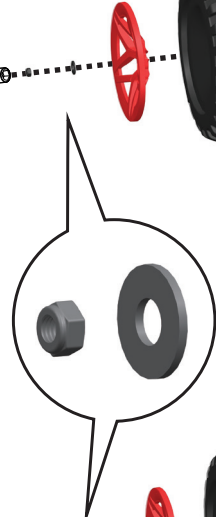
6607832 (x4)



FRONT SIDE

6607818 (x4)

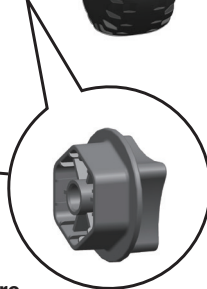
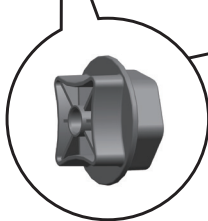
6607816 (x4)



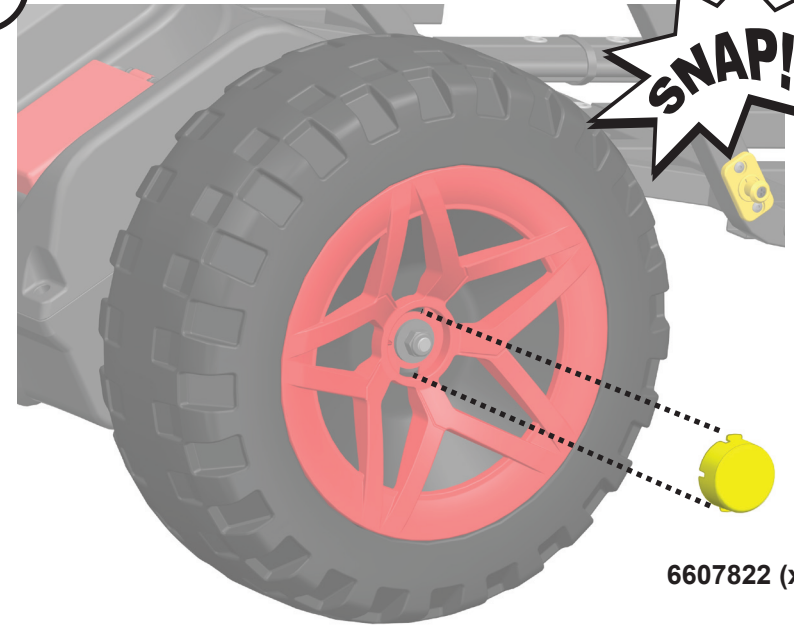
REAR SIDE

6607821 (x2)

When adding part number 6607821, check that the orientation is as shown and make sure they are flush before attaching the tire and wheel.



6



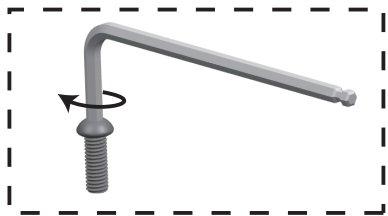
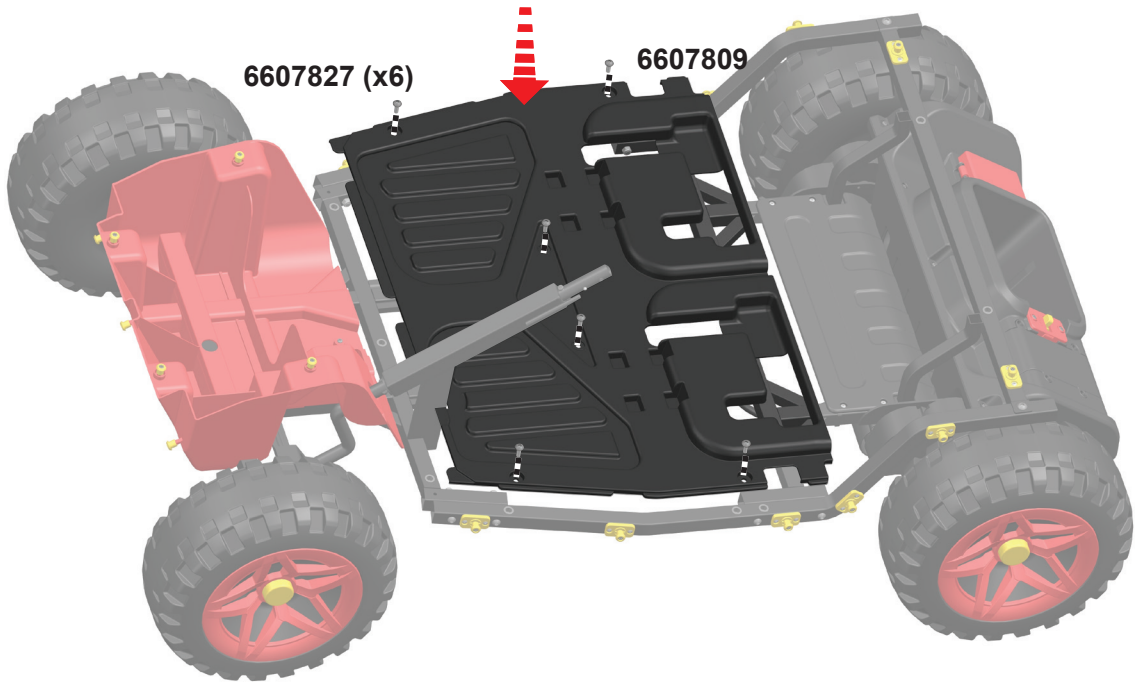
6607822 (x4)



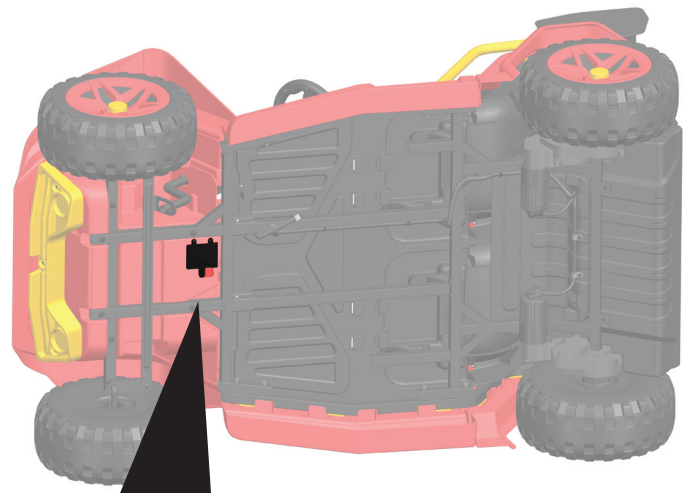
7

HARDWARE REQUIRED:

6607827 (x6)

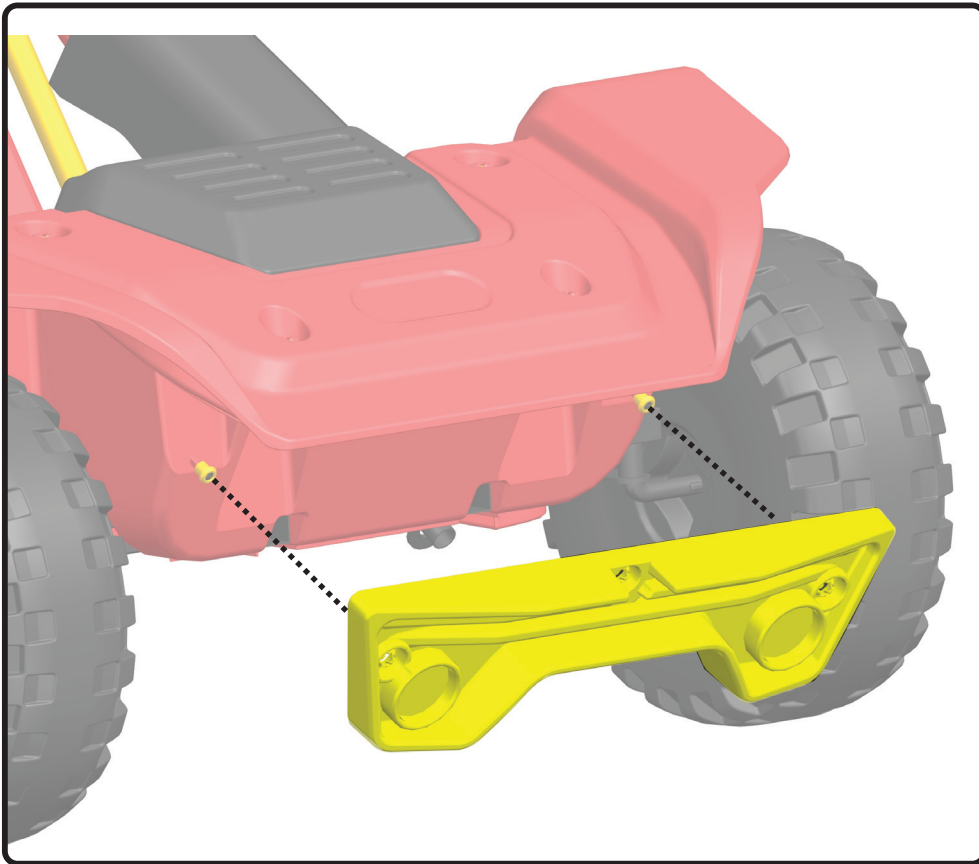


8

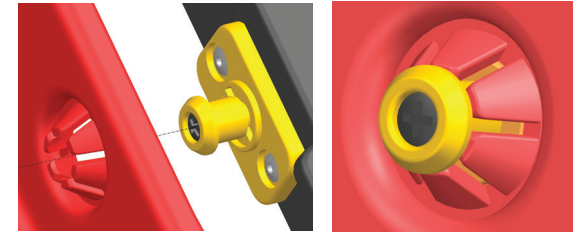


9

NOTE: Snap the front bumper before attaching the hood.



10



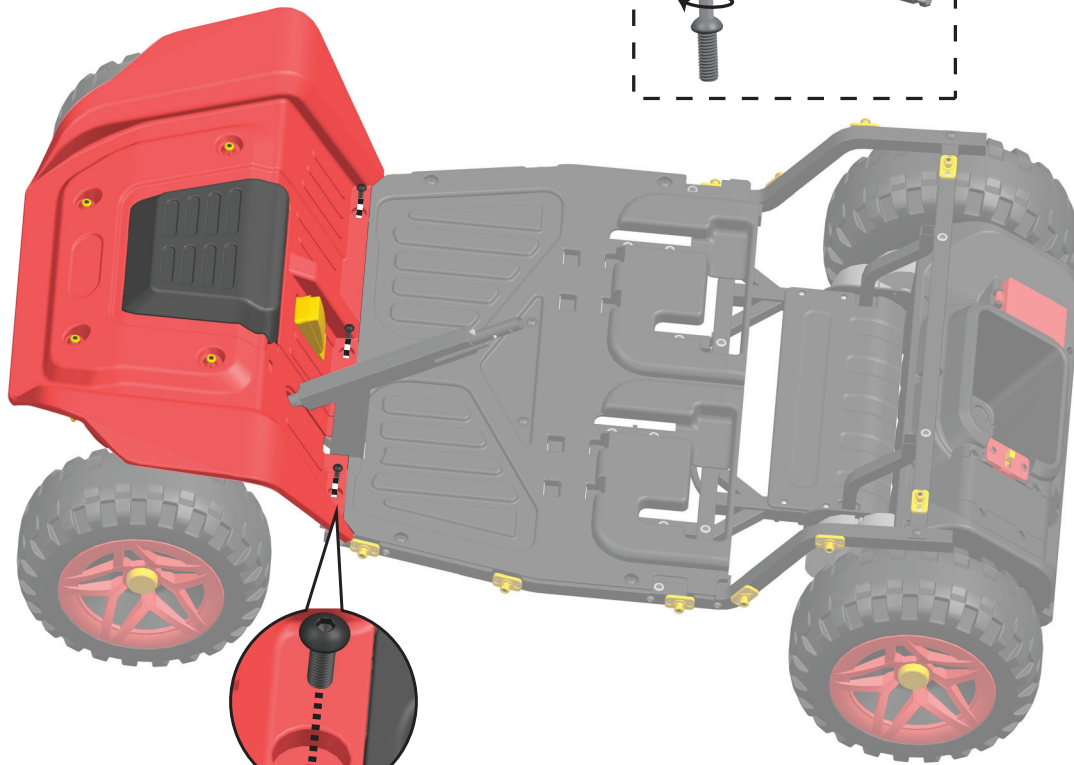
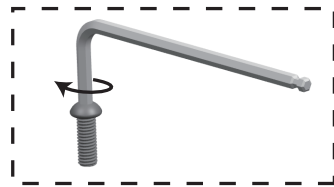
ASSEMBLY TIP:
If having trouble snapping the front bumper or the hood into the yellow screws, slightly unscrew them. Then secure the screws once the pieces have been snapped in.



11

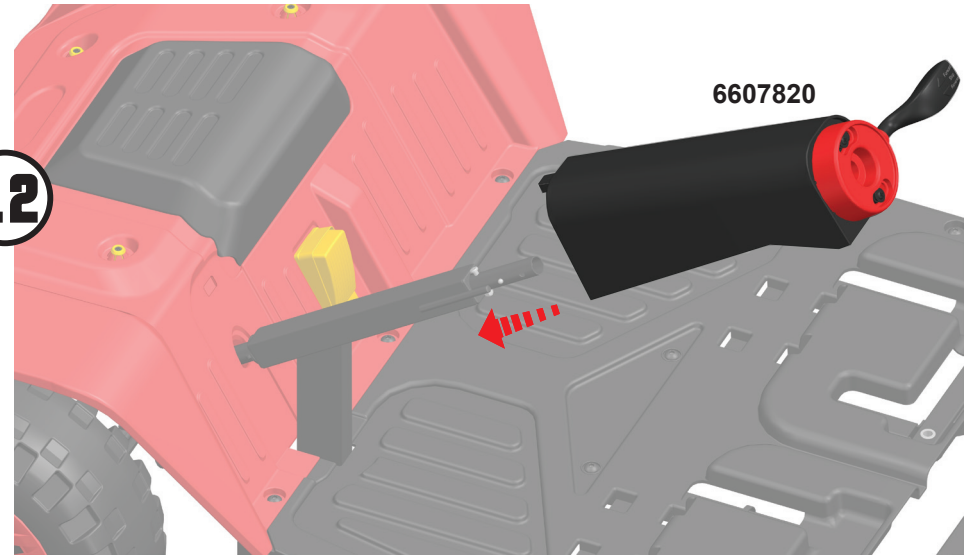
HARDWARE REQUIRED:

6607827 (x3)

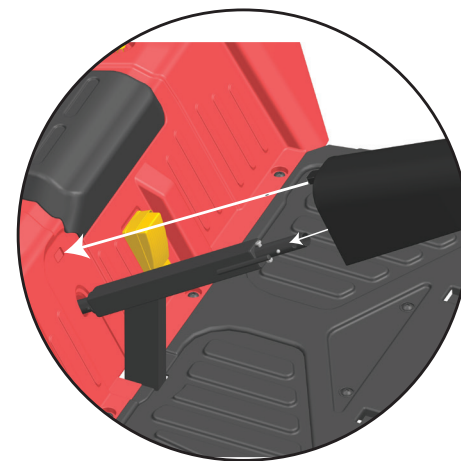


6607827 (x3)

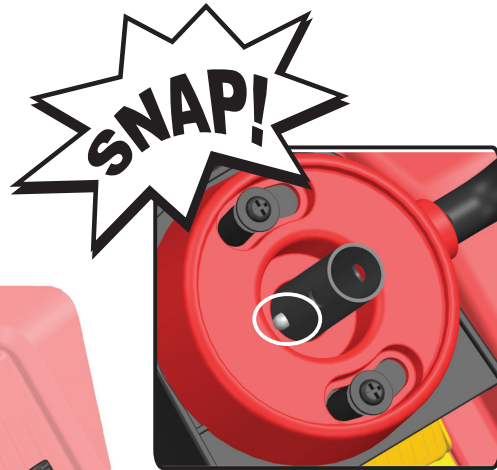
12



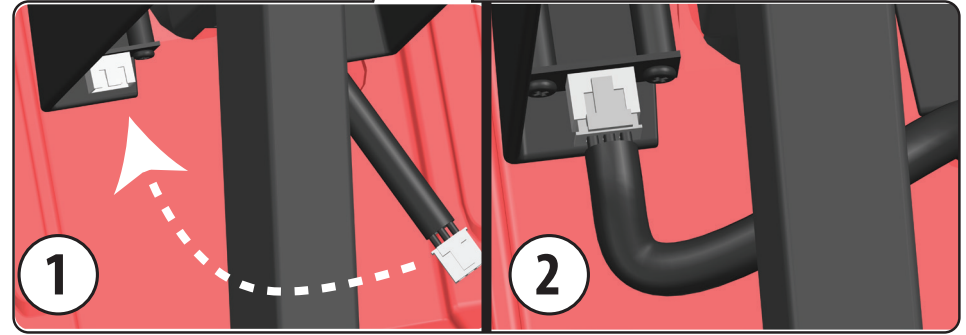
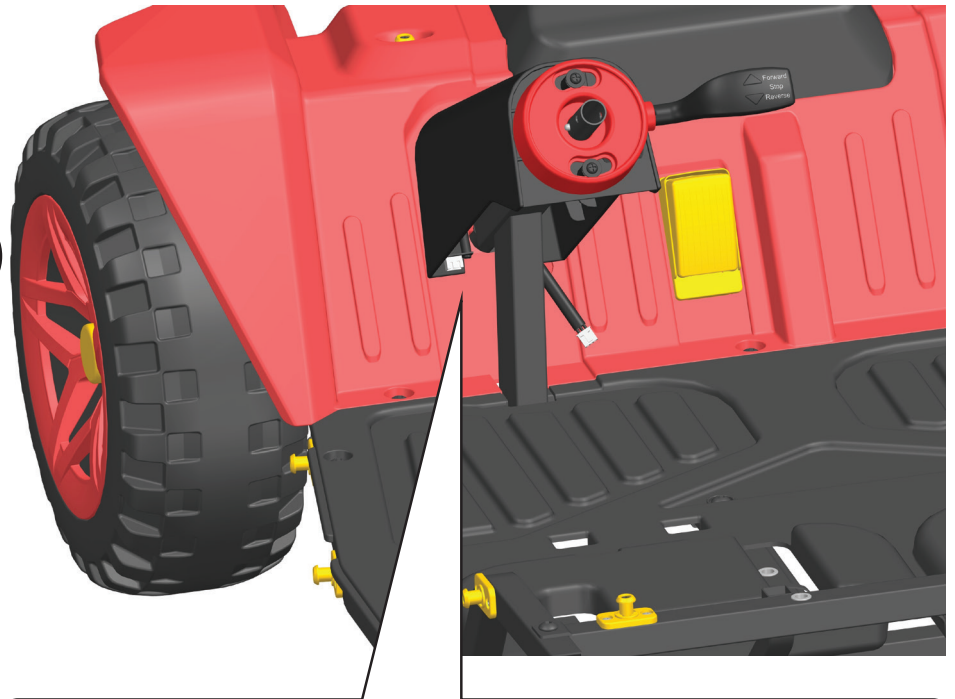
6607820



13



14



15

HARDWARE REQUIRED:

6607828 (x1)

6607830 (x1)



6607819



16

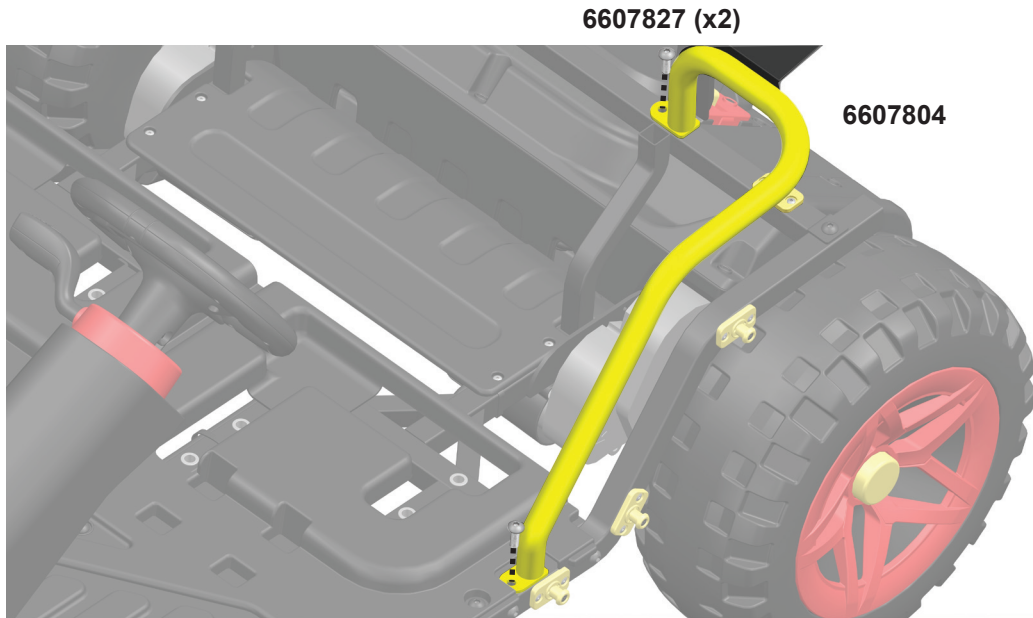
6607830

6607828

17

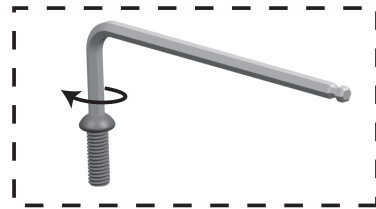
HARDWARE REQUIRED:

6607827 (x4)

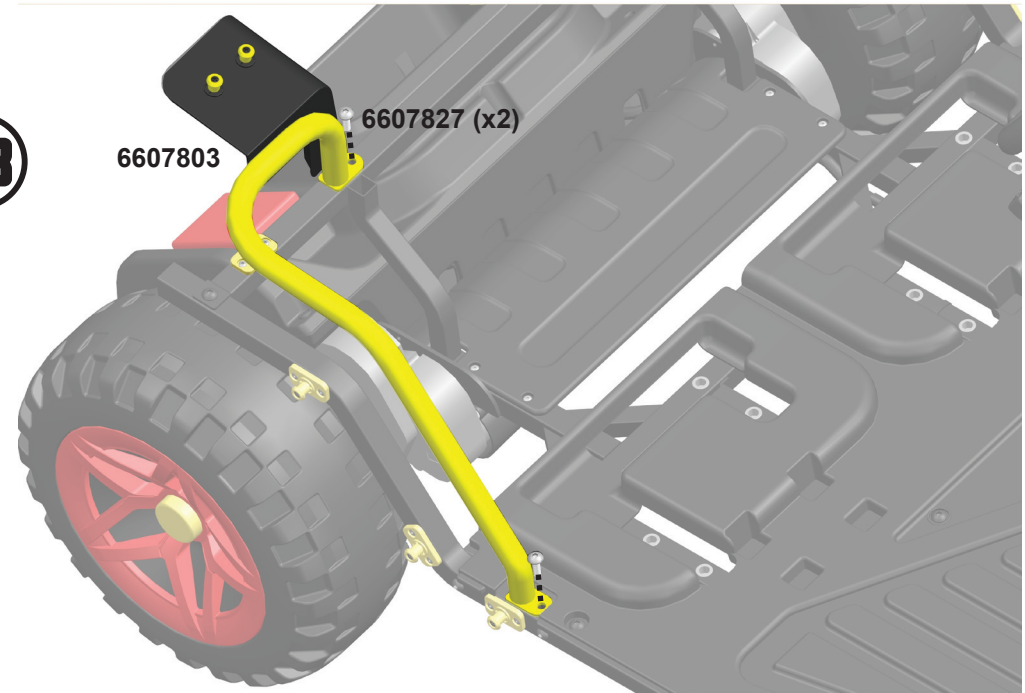


6607827 (x2)

6607804



18

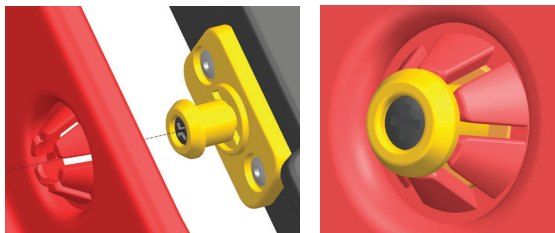


6607803

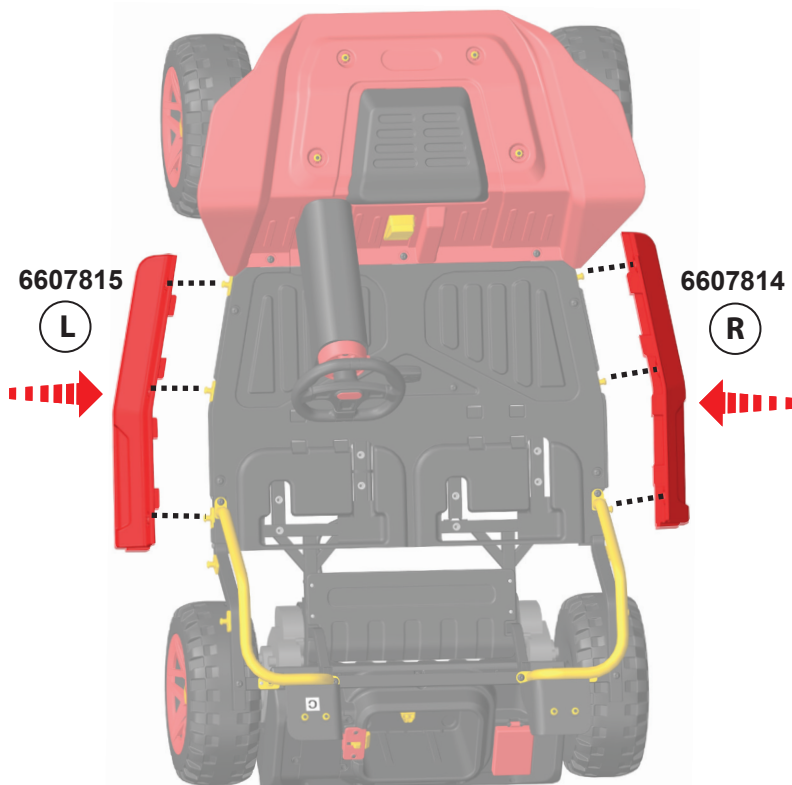
6607827 (x2)



19



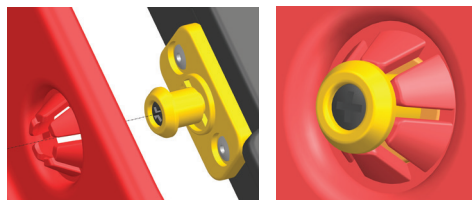
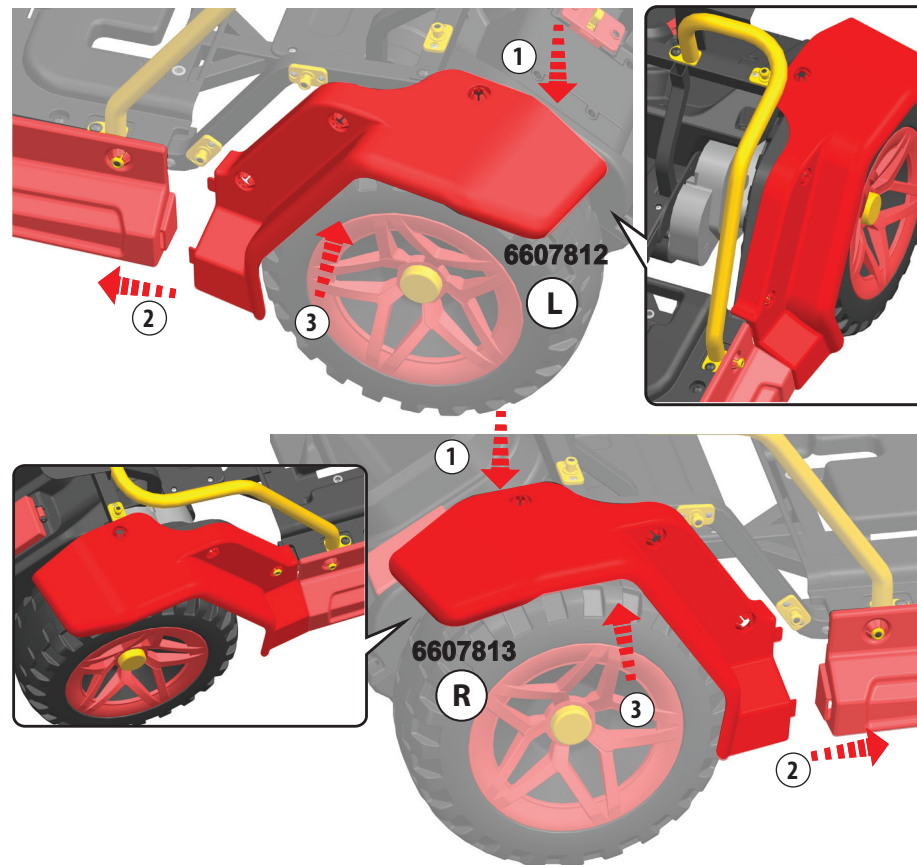
ASSEMBLY TIP:
If having trouble snapping the side guards into the yellow screws, slightly unscrew them. Then secure the screws once the pieces have been snapped in.



To snap the wheel covers:

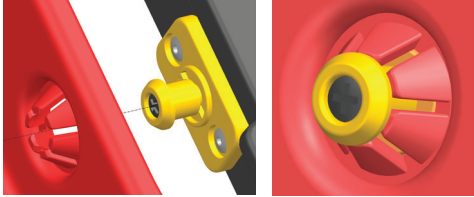
1. Place the cover over the wheel, making sure to align with the three yellow preassembled screws.
2. Connect the wheel covers to the side guards.
3. Snap into the three yellow screws.

20

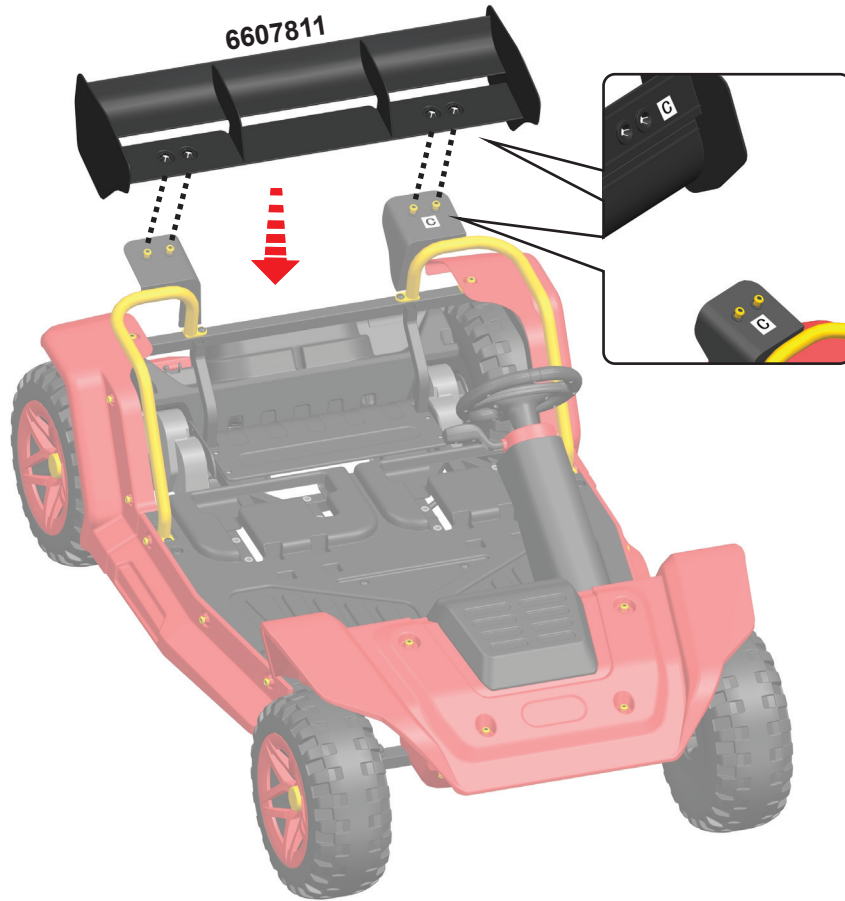


ASSEMBLY TIP:
If having trouble snapping the wheel covers into the yellow screws, slightly unscrew them. Then secure the screws once the pieces have been snapped in.

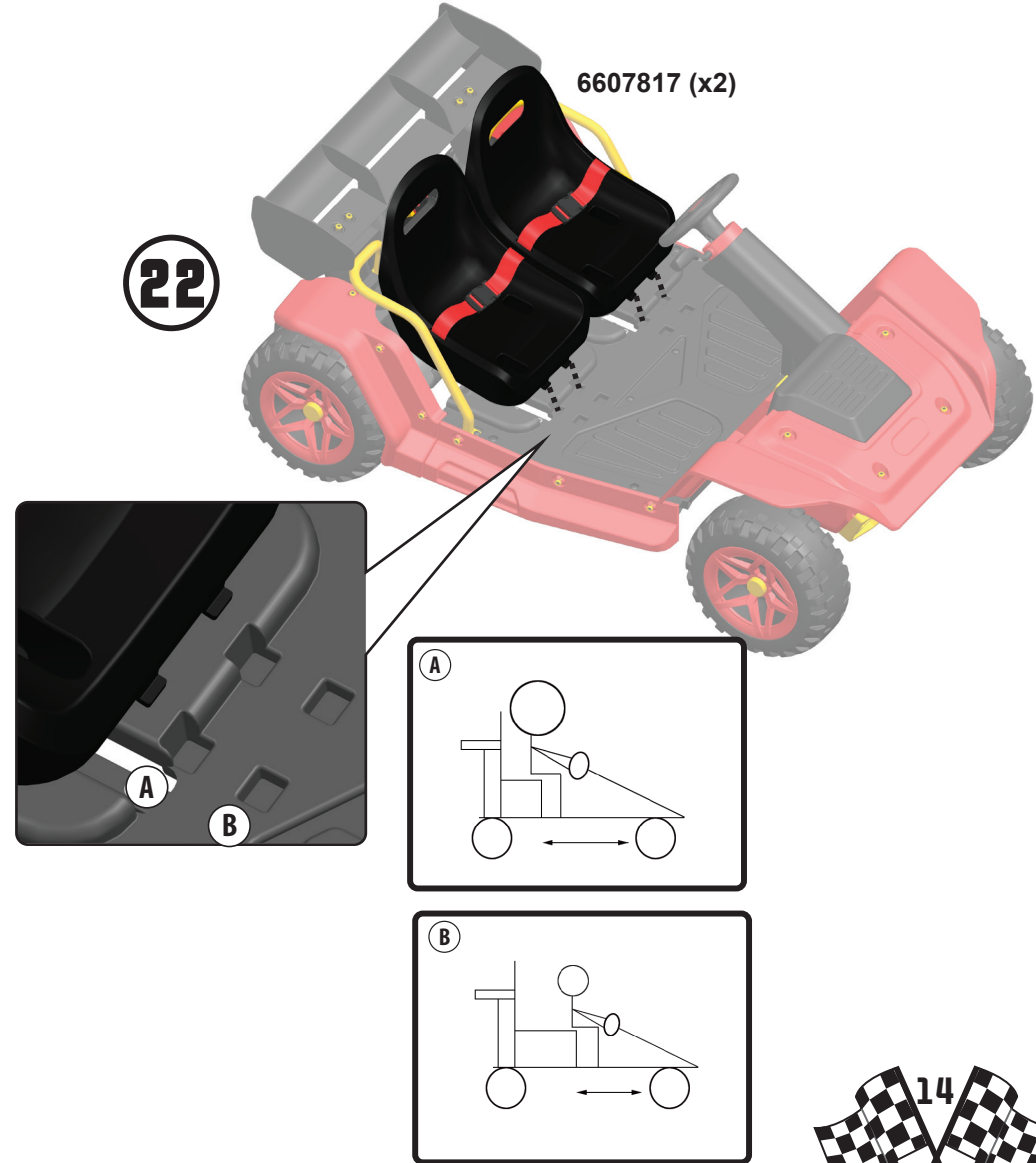
21



ASSEMBLY TIP:
If having trouble snapping the spoiler into the yellow screws, slightly unscrew them. Then secure the screws once the pieces have been snapped in.



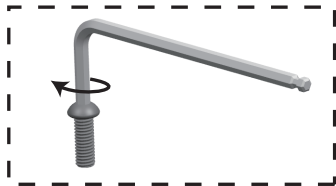
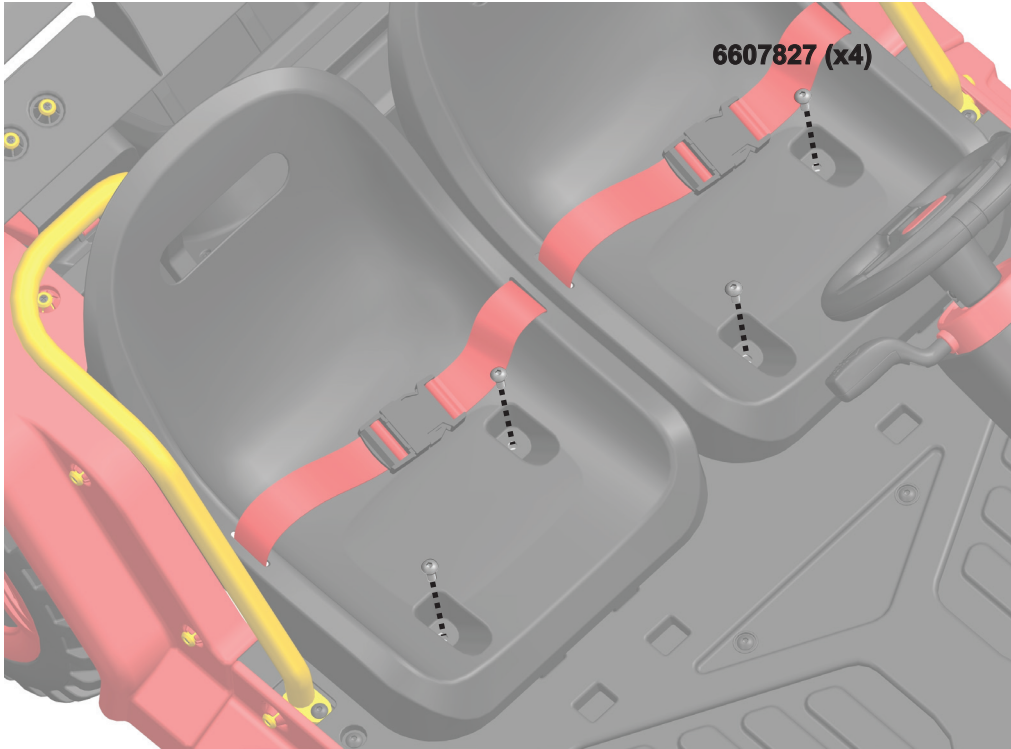
22



23

HARDWARE REQUIRED:

6607827 (x4)



BATTERY INSTALLATION

⚠ THIS SHOULD BE DONE BY AN ADULT.

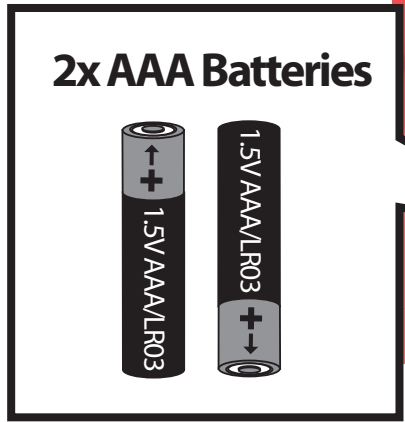
25



6607825

* 12V battery must be fully charged before use.

26



* 1.5V AAA (LR03) BATTERIES ARE NOT INCLUDED.



RIDING

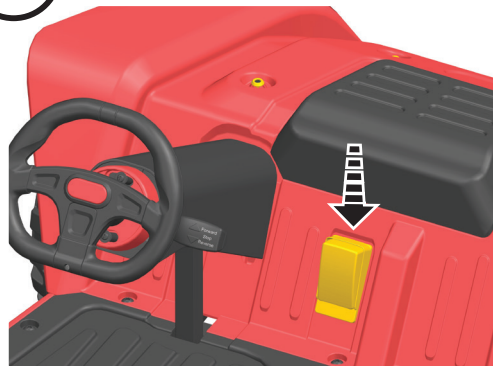
- Fully charge the buggy before first use. Follow charging instructions on page 18.
- Fully read this entire user guide before attempting to ride.
- Ask a competent adult to help ride until you are comfortable.

1 Press the ON/OFF button once to turn on the buggy. Power button is located under the battery.

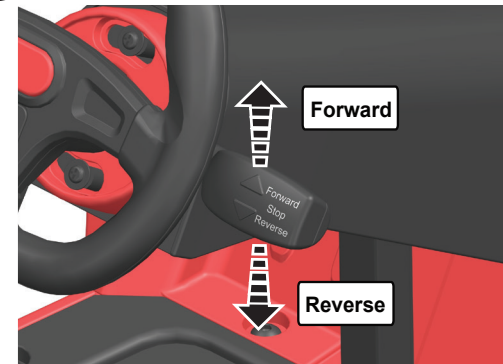


* Always make sure to turn the unit off after playing to conserve battery power.

2 Press the pedal to start riding.



3 To go forward, push the handle up. To go in reverse, pull the handle down.



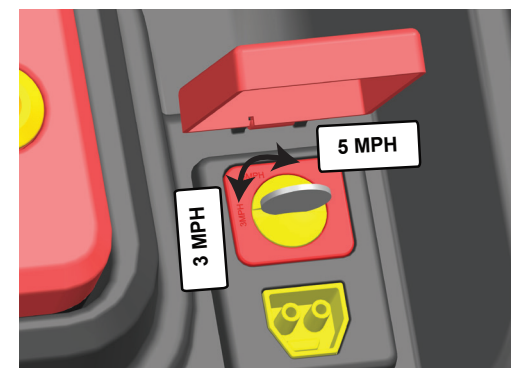
4 Turn the steering wheel to the left to turn left or right to turn right. Press the button on the steering wheel to honk the horn.



5 To stop, move the handle to the middle position.



6 Use a coin (not included) to adjust the speed. Next to the battery, open the door to the Speed Governor and turn to the 3 MPH or 5 MPH.



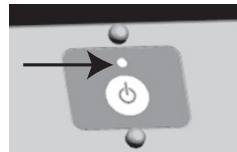
* For younger riders, it is recommended to set the speed to 3 MPH.



CHARGING INFORMATION

Before your first use and as needed, charge the battery according to the instructions below and the safety information on pages 1 and 2. Always charge the battery inside the unit in a clean, dry location away from direct sunlight, flames or sparks.

When the buggy needs to be charged, the light above the power button will begin to flash in green. This buggy can be charged two ways. Follow the below steps to charge the unit.



1. Plug the charger into a wall outlet.
2. Ensure the unit is turned OFF. Then, plug the charging cable into the port on the buggy or battery. The light on the charger should turn red while charging. The light will turn green again when it is fully charged. Charge time is approximately 10 hours.

OPTION A: (FIG. 1)

To charge it using the buggy's port, open the door to the right of the battery and plug the charger into the port located under the Speed Governor.

OPTION B: (FIG. 2)

To charge it using the battery's port, move the switch located on the left side of the battery and remove the battery. Then, plug the charger into the port under the battery.

3. Once it has finished charging, unplug the charging cable from the unit and the wall outlet.
4. Turn the unit ON when you are ready to ride.

IMPORTANT INFORMATION

- An ADULT must charge the unit each time, as the charger is not a toy.
- Only use the included charging cable or risk voiding the limited warranty.
- Power source or wall outlet must be 120 VAC and 60Hz. If the wall outlet is controlled by an on/off switch, ensure that the switch is on.
- Always recharge the battery after each ride and before storing. Never charge the battery longer than 12 hours. Failure to follow these instructions may damage the battery.
- Before charging the battery, examine the battery case for cracks and other damage which may cause sulfuric acid to leak. If damage is detected, please call Customer Service immediately and do not use the product any further.
- Ensure the charging port is completely dry before charging.
- Allow the battery to cool down before recharging.
- Unplug the charging cable from the power outlet when not in use.
- Length of usage and range may vary due to riding conditions, weather, user weight and maintenance.
- Constant stopping and riding may affect the ride time.

FIG. 1

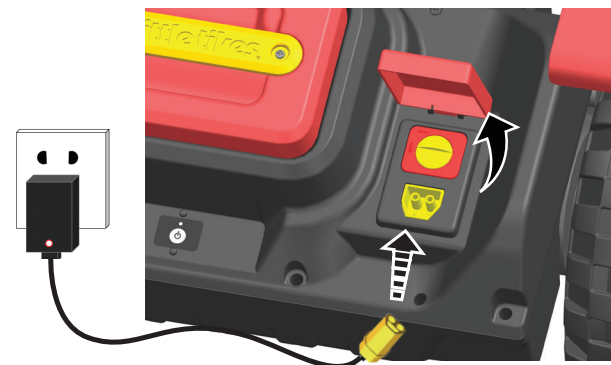
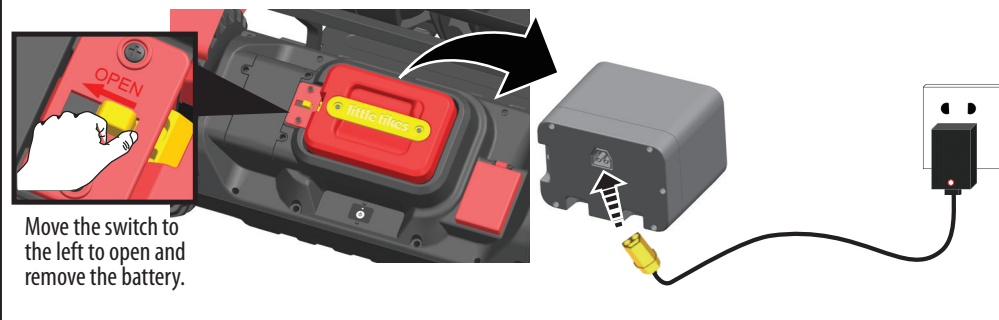
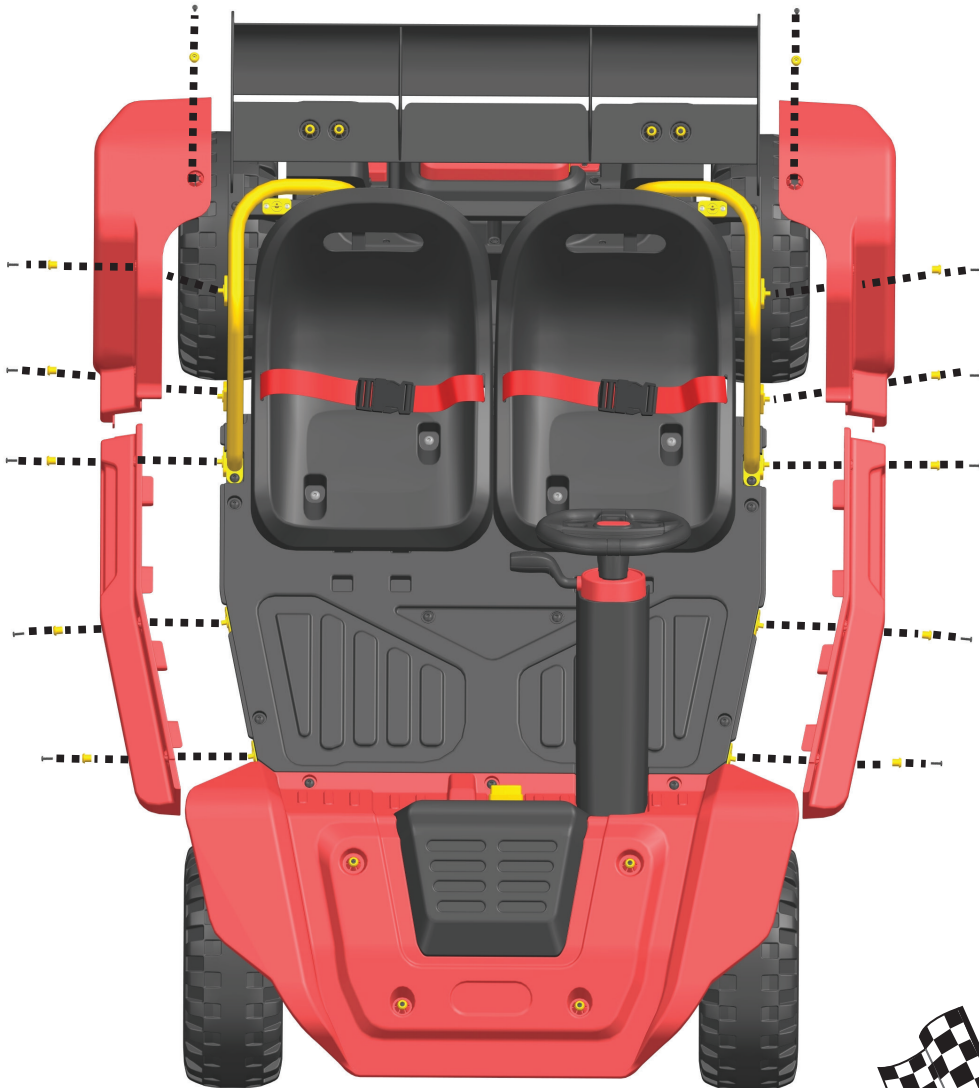
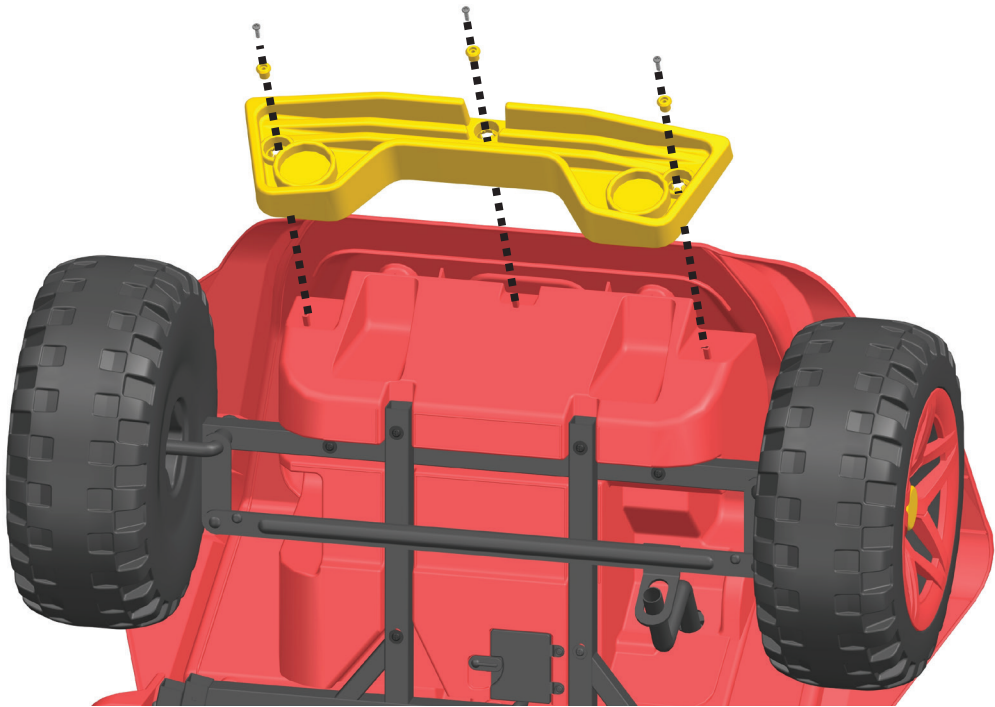
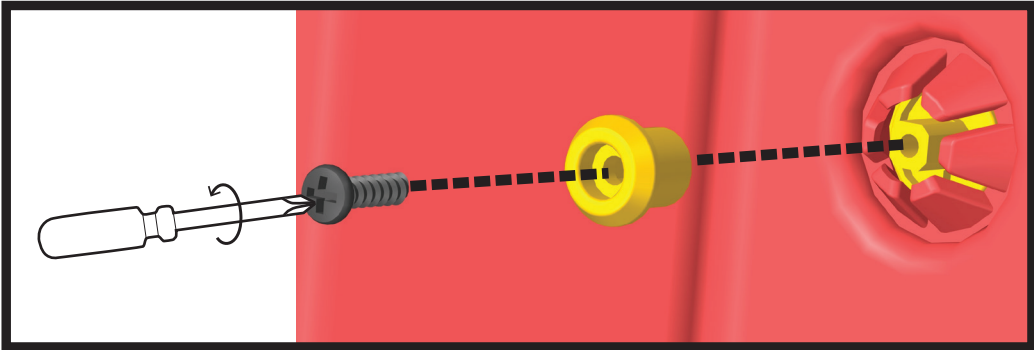


FIG. 2



REMOVING SNAPPED PARTS



MAINTENANCE INSTRUCTIONS:

VEHICLE CARE:

1. Oil or grease moving parts periodically.
2. Check nuts and bolts often and tighten if necessary.
3. Any parts showing evidence of wear should be replaced immediately.
4. It is the responsibility of the adult who assembles this product to properly install all parts included in the carton. These instructions are valuable.
5. Check all screws and their protective coverings regularly and tighten as required. Check plastic parts on a regular basis for cracks or broken pieces.
6. During snowy or rainy weather, the vehicle should be stored inside.
7. Avoid operating the vehicle in wet or snowy conditions. Do not clean the vehicle by spraying with a hose. Water or moisture in the seat compartment can cause the motor and other electrical components to corrode. Corrosion can result in electrical component failure.
8. Avoid operating the vehicle on sand, loose dirt, or gravel. Debris from this type of terrain can cause the motor and other electrical components to fail.
9. To clean the vehicle use a dry cloth. A non-wax furniture polish can be used to clean plastic parts. Do not spray the vehicle with a hose or submerge in water.

GUIDELINES FOR SAFE DRIVING:

1. Before children use this vehicle, an adult should carefully evaluate the driving area as well as the child's ability to drive the vehicle safely. Teach appropriate safety rules to your child before allowing operation of this vehicle. These rules should also be reviewed with other children who want to drive the vehicle.
2. Remain seated. A child who is not sitting on the seat when the vehicle is in motion could fall or cause the vehicle to tip over.
3. Do not operate the vehicle at night.
4. Do not operate the vehicle near steep inclines as it can cause the following:
 - Unsafe speed, even if the button is released.
 - Tipping
 - Loss of traction, causing the vehicle to slip.
 - Rolling backwards at an unsafe speed.
5. Avoid contact with moving/rotating parts, such as the motor, gear box, and wheels. Contact with these parts can cause serious injury.
6. Do not operate the vehicle when it's positioned on its side or upside-down.
7. Do not operate the vehicle near flammable vapors (gasoline, paint thinner, acetone, liquid wax, etc.) as the electrical switch emits an internal spark, which could cause an explosion or fire.
8. To prevent unsupervised use of the vehicle, disconnect the motor harness from the battery when the vehicle is not in use.
9. Never allow the vehicle to be used if the seat is not connected properly.

WARNING:

- Continuous adult supervision required.
- Never use near motor vehicles, streets, swimming pools, hills, steps, or sloped driveways.
- Rider should always be seated.
- Always wear shoes, helmet, knee pads and elbow pads when using the toy.
- Maximum weight: 137 lbs (62.4 kg).
- Periodically check hardware and tighten if necessary. Replace worn or broken parts immediately.
- Skill is required to avoid falls or collision.
- Never ride at night.
- Use the toy only on flat surfaces.

BATTERY SAFETY INFORMATION

- Use only size "AAA" (LR03) alkaline batteries (2 required).
- Charging of rechargeable batteries should only be done under adult supervision.
- Remove rechargeable batteries from the product before recharging.
- Do not mix old and new batteries.
- Do not mix alkaline, standard (carbon-zinc), or rechargeable batteries.
- Be sure to insert the batteries correctly and follow the toy and battery manufacturer's instruction.
- Always remove exhausted or dead batteries from the product.
- Dispose of dead batteries properly: do not burn or bury them.
- Do not attempt to recharge non-rechargeable batteries.
- Avoid short-circuiting battery terminals.
- Remove batteries before placing the unit into storage for a prolonged period of time.



'Let's care for the environment!'

The wheeled bin symbol indicates that the product must not be disposed of with other household waste. Please use designated collection points or recycling facilities when disposing of the item. Do not treat old batteries as household waste. Take them to a designated recycling facility.



FCC COMPLIANCE

NOTE: This equipment has been tested and found to comply with the limits for a Class B digital device, pursuant to Part 15 of the FCC Rules. These limits are designed to provide reasonable protection against harmful interference in a residential installation. This equipment generates, uses and can radiate radio frequency energy and, if not installed and used in accordance with the instructions, may cause harmful interference to radio communications. However, there is no guarantee that interference will not occur in a particular installation. If this equipment does cause harmful interference to radio or television reception, which can be determined by turning the equipment off and on, the user is encouraged to try to correct the interference by one or more of the following measures:

- Reorient or relocate the receiving antenna.
- Increase the separation between the equipment and receiver.
- Connect the equipment into an outlet on a circuit different than that to which the receiver is connected.
- Consult the dealer or an experienced radio/TV technician for help.

This device complies with Part 15 of the FCC Rules. Operation is subject to the following two conditions: (1) This device may not cause harmful interference, and (2) this device must accept any interference received, including interference that may cause undesired operation.

Caution: Modifications not authorized by the manufacturer may void user's authority to operate this device.
CAN ICES-3 (B)/NMB-3(B).

LIMITED WARRANTY

U.S.A. and Canada: For warranty service or replacement part information, visit www.littletikes.com.

United Kingdom: For warranty service or replacement part information, visit www.littletikes.co.uk, and/or call +0800 521 558 or write to 50 Presley Way, Crownhill, Milton Keynes MK8 OES, Bucks UK.

Australia: For warranty service or replacement part information, call 1 300 059 676 or write to Suite 2.02, 32 Delhi Road, Macquarie Park NSW 2113.

All Other Countries: Contact the distributor for specific warranty information.

Some replacement parts may be available for purchase after the warranty expires – contact us for details.

© The Little Tikes Company, an MGA Entertainment company. LITTLE TIKES® is a trademark of Little Tikes in the U.S. and other countries. All logos, names, characters, likenesses, images, slogans, and packaging appearance are the property of Little Tikes.

Printed in China • 1222-1-E/INT

CONSUMER SERVICE

Little Tikes Consumer Service

www.littletikes.com

2180 Barlow Road

Hudson, Ohio 44236 U.S.A.

1-800-321-0183

MGA Entertainment UK Ltd.

www.littletikes.co.uk

50 Presley Way, Crownhill, Milton

Keynes, MK8 OES, Bucks, UK

support@LittleTikesStore.co.uk

Tel: +0 800 521 558

MGA Entertainment (Netherlands) B.V.

Baronie 68-70

2404 XG Alphen a/d Rijn

The Netherlands

Tel: +31 (0) 172 758038

Imported by MGA Entertainment

Australia Pty Ltd

www.littletikes.com.au

Suite 2.02, 32 Delhi Road

Macquarie Park NSW 2113

1300 059 676

