

LIMITED WARRANTY

The Little Tikes Company makes fun, high quality toys. We warrant to the original purchaser that this product is free of defects in materials or workmanship for one year * from the date of purchase (dated sales receipt is required for proof of purchase). At the sole election of The Little Tikes Company, the only remedies available under this warranty will be the replacement of the defective part or replacement of the product. This warranty is valid only if the product has been assembled and maintained per the instructions. This warranty does not cover abuse, accident, cosmetic issues such as fading or scratches from normal wear, or any other cause not arising from defects in material and workmanship. *The warranty period is three (3) months for daycare or commercial purchasers. U.S.A. and Canada: For warranty service or replacement part information, please visit our website at www.littletikes.com, call 1-800-321-0183 or write to: Consumer Service, The Little Tikes Company, 2180 Barlow Road, Hudson OH 44236, U.S.A. Some replacement parts may be available for purchase after warranty expires—contact us for details. Outside U.S.A. and Canada: Contact place of purchase for warranty service. This warranty gives you specific legal rights, and you may also have other rights, which vary from country/state to country/state. Some countries/states do not allow the exclusion or limitation of incidental or consequential damages, so the above limitation or exclusion may not apply to you.

BATTERY SAFETY INFORMATION

- Use only size "AA" (LR6) alkaline batteries (3 required).
- Charging of rechargeable batteries should only be done under adult supervision.
- Remove rechargeable batteries from the product before recharging.
- Do not mix old and new batteries.
- Do not mix alkaline, standard (carbon-zinc), or rechargeable batteries.
- Be sure to insert the batteries correctly and follow the toy and battery manufacturer's instruction.
- Always remove exhausted or dead batteries from the product.
- Dispose of dead batteries properly: do not burn or bury them.
- Do not attempt to recharge non-rechargeable batteries.
- Avoid short-circuiting battery terminals.
- Remove batteries before placing the unit into storage for a prolonged period of time.

FCC COMPLIANCE

NOTE: This equipment has been tested and found to comply with the limits for a Class B digital device, pursuant to Part 15 of the FCC Rules. These limits are designed to provide reasonable protection against harmful interference in a residential installation. This equipment generates, uses and can radiate radio frequency energy and, if not installed and used in accordance with the instructions, may cause harmful interference to radio communications. However, there is no guarantee that interference will not occur in a particular installation. If this equipment does cause harmful interference to radio or television reception, which can be determined by turning the equipment off and on, the user is encouraged to try to correct the interference by one or more of the following measures:

- Reorient or relocate the receiving antenna.
- Increase the separation between the equipment and receiver.
- Connect the equipment into an outlet on a circuit different from that to which the receiver is connected.
- Consult the dealer or an experienced radio/TV technician for help.

This device complies with Part 15 of the FCC Rules. Operation is subject to the following two conditions: (1) This device may not cause harmful interference, and (2) this device must accept any interference received, including interference that may cause undesired operation.

Caution: Modifications not authorized by the manufacturer may void users authority to operate this device.
CAN ICES-3 (B)/NMB-3(B).



'Let's care for the environment!'

The wheelie bin symbol indicates that the product must not be disposed of with other household waste. Please use designated collection points or recycling facilities when disposing of the item. Do not treat old batteries as household waste. Take them to a designated recycling facility.

Please keep this manual as it contains important information.



© The Little Tikes Company, an MGA Entertainment company. LITTLE TIKES® is a trademark of Little Tikes in the U.S. and other countries. All logos, names, characters, likenesses, images, slogans, and packaging appearance are the property of Little Tikes.



Printed in China
0122-0-E/INT

Little Tikes Consumer Service
2180 Barlow Road
Hudson, Ohio 44236 U.S.A.
1-800-321-0183

MGA Entertainment UK Ltd.
50 Presley Way, Crownhill, Milton Keynes,
MK8 0ES, Bucks, UK
support@LittleTikesStore.co.uk
Tel: +0 800 521 558

MGA Entertainment (Netherlands) B.V.
Baronie 68-70, 2404 XG Alphen a/d Rijn
The Netherlands
Tel: +31 (0) 172 758038

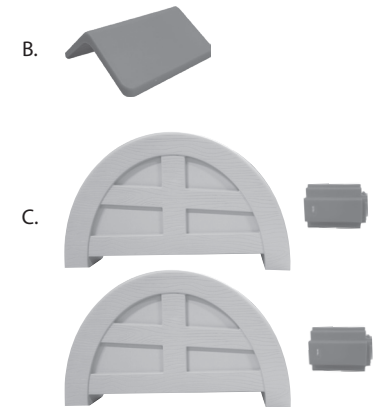
Imported by MGA Entertainment Australia Pty Ltd
Suite 2.02, 32 Delhi Road
Macquarie Park NSW 2113
1300 059 676



SKU: 659591

CONTENTS

- A. Look & Learn Window™
- B. Roof Shingle
- C. 2 Legs with 2 Connectors

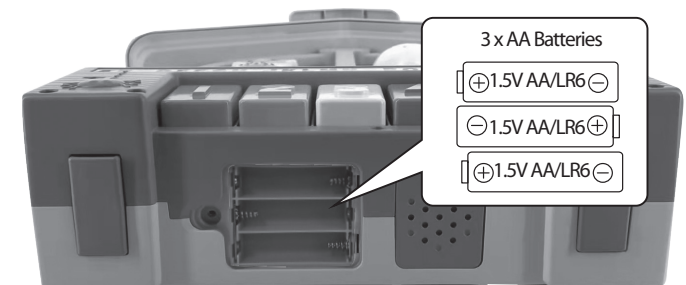


Illustrations are for reference only. Styles may vary from actual contents.
Please remove all packaging including tags, ties & tacking stitches before giving this product to a child.

BATTERY REPLACEMENT

The batteries included in the window are for in-store demonstration. Before playing, an adult must install fresh alkaline batteries (not included) in the unit. Here's how:

1. Using a Phillips screwdriver (not included) remove the screw and battery compartment cover from under the window.
2. Install three (3) 1.5V AA (LR6) alkaline batteries (not included) making sure the (+) and (-) ends face the proper direction as indicated inside the battery compartment.
3. Replace the compartment cover and tighten the screw.



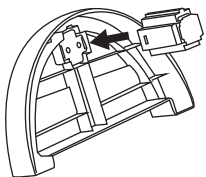
- CAUTION**
- Make sure the Look & Learn Window™ is placed on a flat, level floor when playing.
 - Do not allow children to pull themselves up using the unit, as the unit can tip over.
 - Do not allow children to stretch their legs under the unit.

ASSEMBLY

Look & Learn Window™ can be assembled two different ways for more ways to play.

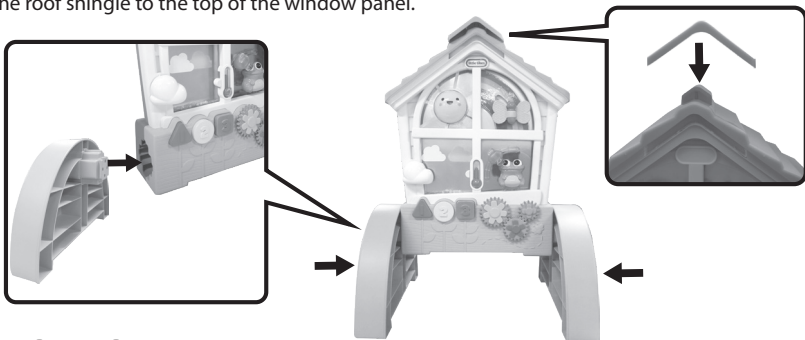
1 Assemble the Legs

Insert the connectors into the back of the legs. The connector is designed to only fit one way, make sure it is oriented the correct way.



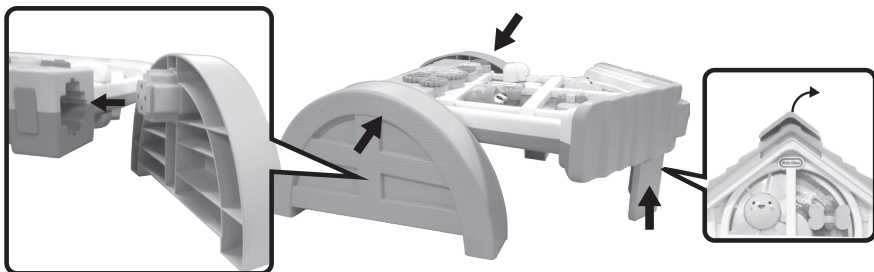
2 Upright Play

In the upright position, the child can play while standing, sitting, or kneeling. To assemble in the upright position, insert the legs to each side of the window panel, making sure it clicks in place. Then, snap the roof shingle to the top of the window panel.



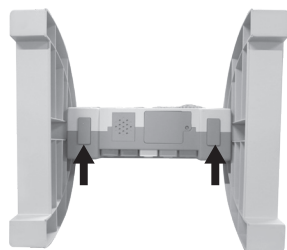
3 Close-to-Floor Play

In close-to-floor position, the child can play while sitting down. To assemble in the sitting position, rotate the window panel to either the day or night side. Insert the legs into each side, making sure it clicks in place. Then, remove the roof shingle and insert it into the slot on top of the window.



4 Removing the Legs

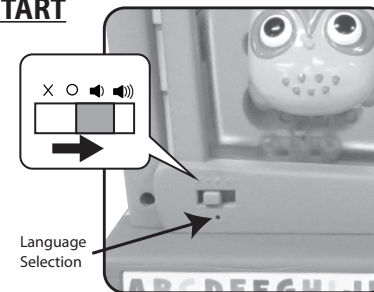
To remove the legs, press in the buttons under the window panel and pull off the legs.



QUICK START

Before beginning, move the switch from Try Me (X) to either Low or High volume. Switch is located on the night side of the window panel.

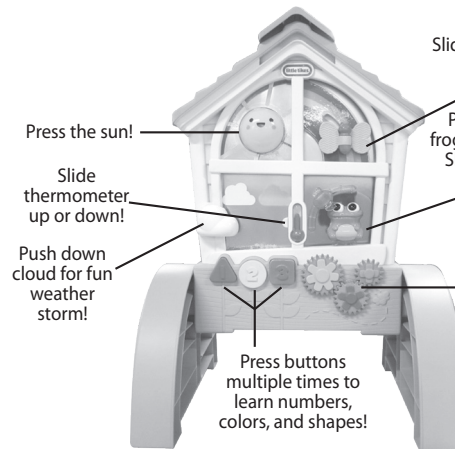
To change the language from English to French, insert a pointed object (like a pin) to press the button under the switch for two seconds.



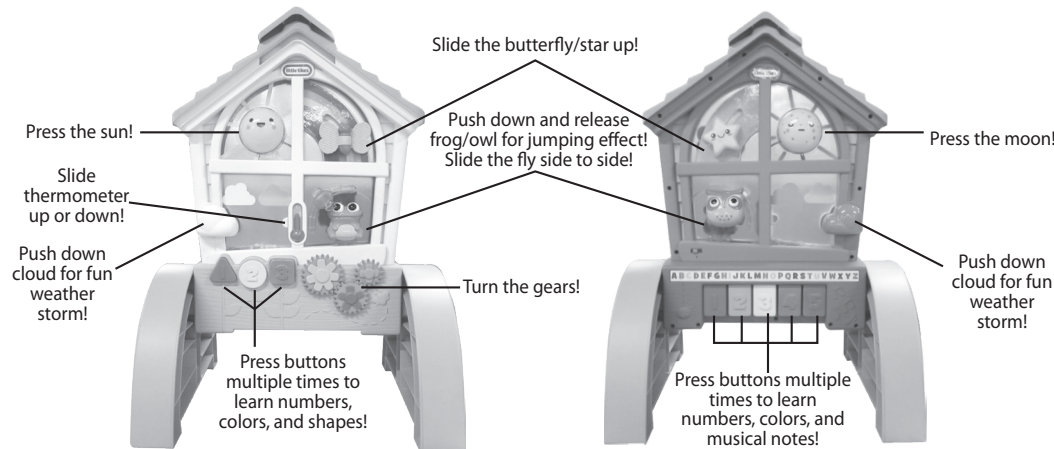
FEATURES

The Look & Learn Window™ has two sides of fun with different activities, phrases, and sounds!

Day Side



Night Side



IMPORTANT INFORMATION

WARNING

- Adult supervision required. Do not leave children unattended.
- Do not expose the unit to moisture of any kind. Wipe the unit with a damp cloth to clean.
- Do not use the product if it is damaged or broken.
- Do not stand on, sit on or throw the unit, as doing so can result in injury to the person and irreversible damage to the unit.
- Do not allow children to pull themselves up using the unit, as the unit can tip over.
- Do not allow children to stretch their legs under the unit.
- Do not place the unit on a table.
- Use only on flat, level surfaces free of objects that could cause the product to tip over.
- To avoid burns, keep the child away from hot liquids, ranges, radiators, space heaters, fireplaces, etc.
- Never use near steps, pools, hot surfaces, or areas that may be hazardous to a child.
- Never use near a staircase.
- Never leave child unattended. Always keep child in view while using the product.
- Never place the product near the windows where cords from blinds or drapes may strangle child.
- Never use the unit in low temperature areas.
- If the unit stops working properly or doesn't work as it should, turn off and turn it back on. If there is still a problem, replace the batteries.
- Play is limited in Try Me mode. Before playing, move the switch to a volume position.