



637803M

XIM637803-1R3 - 8/19

www.littletikes.com

www.littletikes.co.uk

www.littletikes.nl

www.littletikes.pl

ENGLISH

FISH 'N SPLASH WATER TABLE™

Ages: 2 years & up

Please save sales receipt for proof of purchase.

WARNING:

ADULT ASSEMBLY REQUIRED.

- Keep these instructions for future reference.
- Prior to assembly, this package contains small parts: hardware which is a choking hazard and may contain sharp edges and sharp points. Keep away from children until assembled.
- Adult supervision required. Do not leave children unattended.
- This product is intended for outdoor domestic family use only.
- This product is intended for use by children ages 2 years and up.
- Use this product on a firm, level surface and avoid using near swimming pools, on or near steps, hills or inclines.
- Do not allow children to sit, stand play or climb on the top of surface. Failure to do so may cause the product to become unstable.
- Intended for use with the supplied accessories only.
- Never fill with anything except clean tap water. Use of other liquids may be harmful or damage the unit. Never fill with sand or dirt.
- Do not store or leave water in product when not in use.

DISPOSAL

- Disassemble and dispose of equipment in such a manner that no hazardous conditions such as, but not limited to, small parts and sharp edges exist at the time equipment is discarded.

CONSUMER SERVICE TOLL-FREE NUMBER:

United States:

www.littletikes.com
1-800-321-0183 Monday - Friday
The Little Tikes Company
2180 Barlow Road
Hudson, OH 44236
E-mail: service@littletikescare.com

United Kingdom:

www.littletikes.co.uk
Little Tikes, MGA Entertainment (UK) Ltd
50 Presley Way
Crownhill
Milton Keynes MK8 0ES
Bucks, UK
Tel: +0 800 521 558
E-mail: support@LittleTikesStore.co.uk

Imported by MGA Entertainment Australia Pty Ltd
Suite 2.02, 32 Delhi Road
Macquarie Park NSW 2113



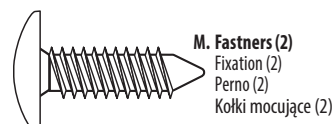
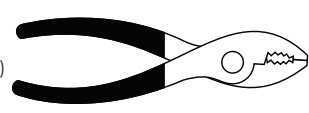
Printed in U.S.A. D.R. ©2019 The Little Tikes Company
© The Little Tikes Company, an MGA Entertainment company. LITTLE TIKES® is a trademark of Little Tikes in the U.S. and other countries. All logos, names, characters, likenesses, images, slogans, and packaging appearance are the property of Little Tikes. Please keep this address and packaging for reference since it contains important information. Contents, including specifications and colors, may vary from photos depicted on package. Instructions included. Please remove all packaging including tags, ties & tacking stitches before giving this product to a child.

LIMITED WARRANTY

The Little Tikes Company makes fun, high quality toys. We warrant to the original purchaser that this product is free of defects in materials or workmanship for one year * from the date of purchase (dated sales receipt is required for proof of purchase). At the sole election of The Little Tikes Company, the only remedies available under this warranty will be the replacement of the defective part or replacement

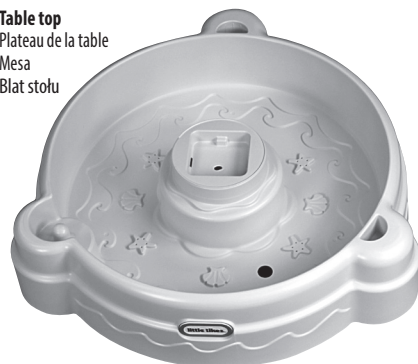
Adult assembly required / Le montage devra être effectué par un adulte / Debe ser armado por un adulto / Wymagany montaż przez osoby dorosłe

Tools required (not included)
Outils Requis (ne sont pas inclus)
Herramientas Requeridas (no se incluye)
Wymagane narzędzia (nie załączono)



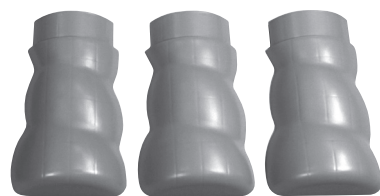
A. Table top

Plateau de la table
Mesa
Blat stołu



B. Table Legs (3)

Pieds de la table (3)
Patas de la mesa (3)
Nogi (3)



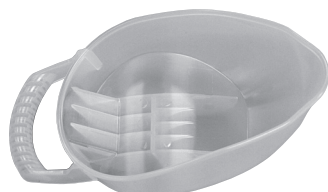
C. Stream

Ruisseau
Arroyo
Potok



E. Tipping Fish Bowl

Bassin à bec verseur
Pecera que puede inclinarse
Miska na zawiasie



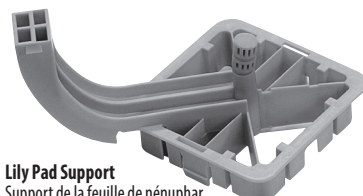
D. Bowl Support

Support du bassin
Soporte de la pecera
Podstawa miski



F. Lily Pad Support

Support de la feuille de nénuphar
Soporte de la hoja de nenúfar
Łodyga lilii wodnej



G. Spinning Lily Pad

Nénuphar tournoyant
Hoja de nenúfar giratoria
Obrotowa lilija wodna



H. Critter Launcher

Lanceur de bêtes
Lanzador de animalitos
Katapulta



J. Water Mover

Dispositif pour faire des vagues
Agitador de agua
Turbinka



I. Cup

Coupelle
Taza
Kubek



K. Net

Net
Net
Podbierak



R. Fishing Pole

Canne à pêche
Caña de pescar
Wędką



L. Drain Plug

Bouchon de vidange
Tapón de desagüe
Korek



O. Frog

Grenouille
Rana
Żaba



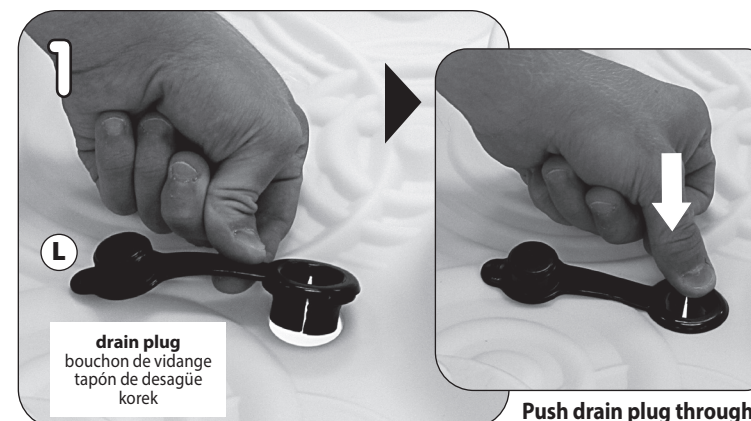
P. Turtle

Tortue
Tortuga
Żółw



Q. Crab

Crabe
Cangrejo
Krab



With table top upright, insert drain plug (M) into opening.

Avec le plateau de la table positionné verticalement, insérez le bouchon de vidange (M) dans l'ouverture.
Con la parte superior de la mesa hacia arriba, introduzca el tapón de drenaje (M) en la apertura. Empuje el tapón de drenaje a través de la apertura.
Wsuń korek (M) w otwór spustowy.

Push drain plug through opening.

Poussez le bouchon de vidange dans l'ouverture.
Empuje el tapón de desagüe por la abertura.
Wepchnij korek w otwór.

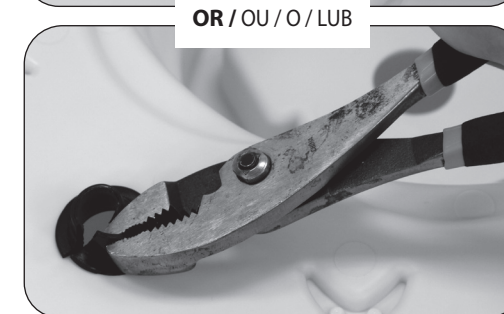


Turn the table over, work the plug around the opening pulling only the plug edge through.

Retournez la table et passez le bouchon autour de l'ouverture en ne tirant que par le bord du bouchon.

Dé la vuelta a la mesa y manipule el tapón alrededor de la apertura tirando solamente para que pase el borde del tapón.

Obróć blat stołu i trzymając za krawędź dociągnij korek wewnątrz otworu.



Plug edge should be completely pulled through. Close drain plug cover.

Le bord du bouchon doit passer en entier dans l'ouverture. Fermez le capuchon du bouchon de vidange.

El borde del tapón debe estar completamente colocado. Cierre la tapa del tapón de drenaje.

Krawędź korka powinna całkowicie przejść przez otwór. Zabezpiecz korek zatyczką.

